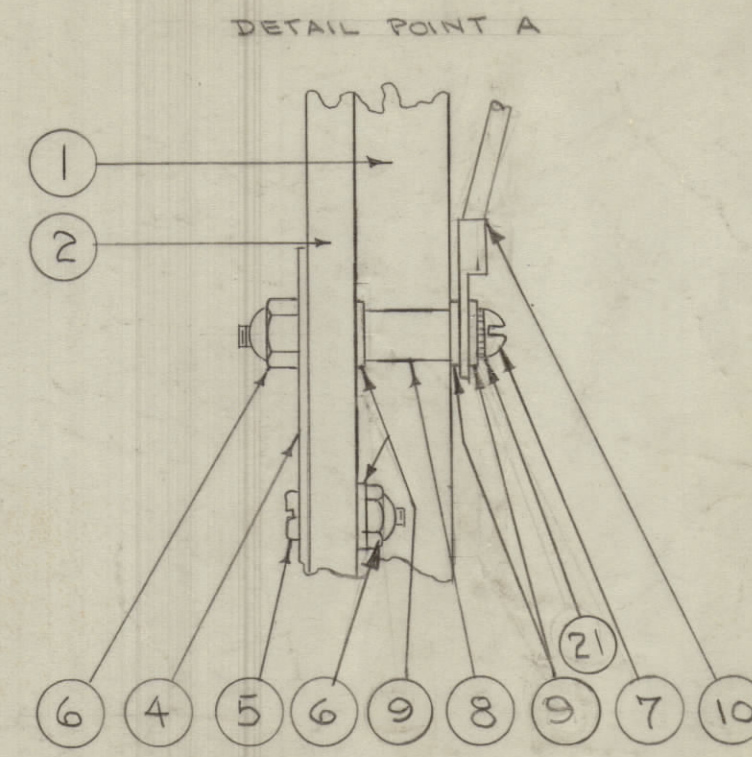
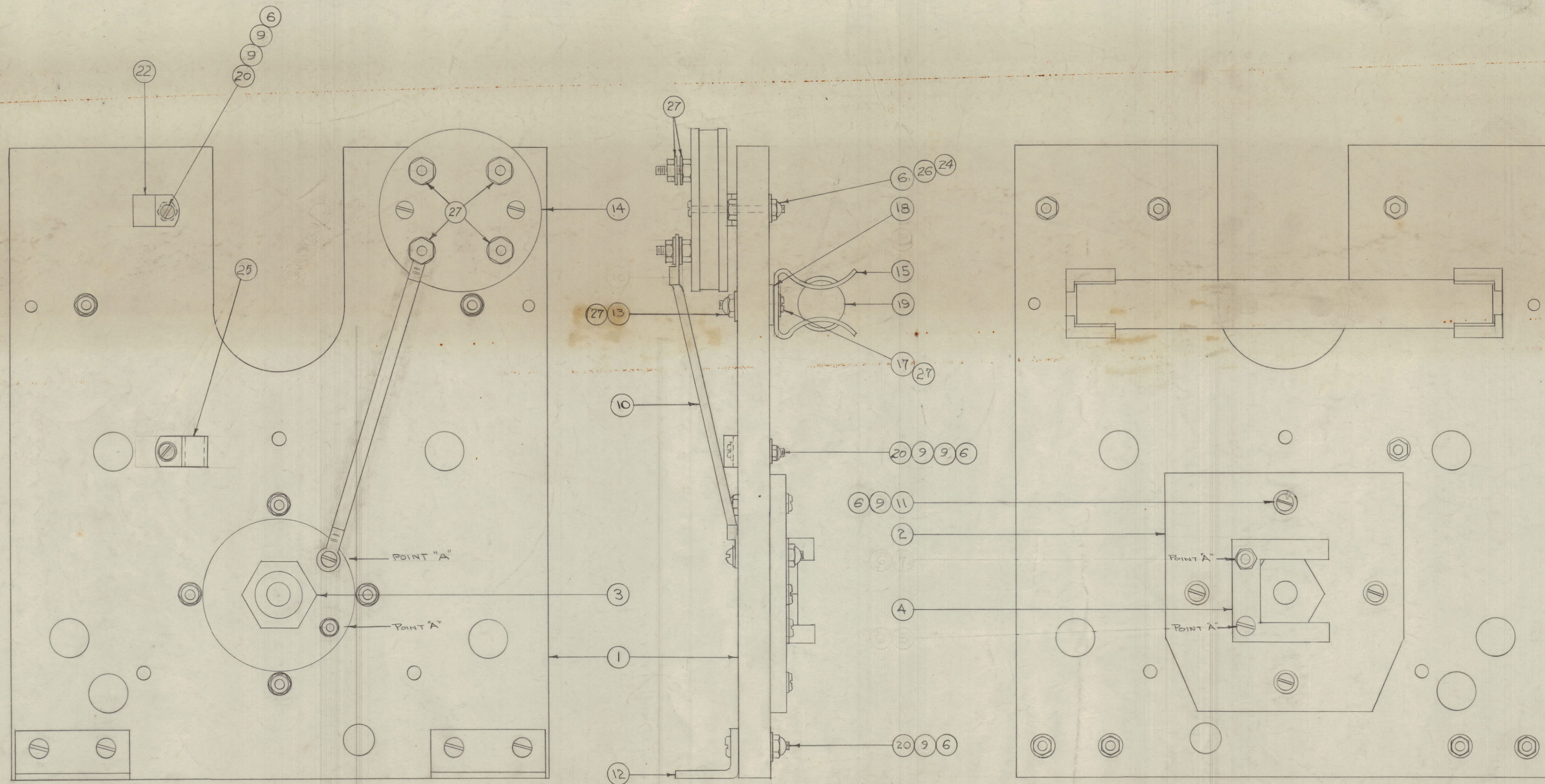


IF IT IS FOUND DESIRABLE TO CHANGE ANY TOLERANCE OR OTHER DETAIL SPECIFIED ON THIS DRAWING NOTIFY THE PURCHASER PROMPTLY.
 MAXIMUM ALLOWABLE TOLERANCES HAVE BEEN DETERMINED AND DEVIATIONS WILL BE CAUSE FOR REJECTION. REMOVE ALL BURRS AND SHARP EDGES



12	PICTORIAL CLARIFIED						
11	ITEM 27 QUAN. WAS 2						
10	ITEM 27 WAS FWD08MRC						
9	ITEM 25 WAS CU-102-4						
8	ITEM 24 WAS FWD06MRC						
7	ITEM 23 (SCBS0632BC14) DELETED						
6	ITEM 22 WAS CU-102-5						
5	ITEM 20 QUAN. WAS 4						
4	ITEM 16 (SM-127-D-1032) DELETED						
3	ITEM 9 QUAN. WAS 1						
2	ITEM 9 WAS FWD08MRC						
1	ITEM 6 QUAN. WAS 10						
B		2	ITEMS 22-27 ADDED	4/11/57	3	16	
A		1	ITEM 7 WAS SCBS0832BC16	5/29/54	1	16	
C		2	ITEMS 18-20-21 ADDED	5/29/54	1	16	
A		1	ITEMS 5-6-7-8-11-12 CHANGED	5/29/54	1	16	
ISSUE	ITEM	CHANGED FROM	DATE	CN. NO.	DRAFTS	CHECKER	ENG. APP.
TOLERANCES		SCALE:					
ALL	DEC. DIM. ±	DRILL PUNCH, COMMERCIAL STOCK					
OTHERS	FRAC. DIM. ±	SIZES AND MANUFACTURERS					
	ANGULAR DIM. ±	TOLERANCES ARE NOT INCLUDED.					

12	27	FW08HRC	WASHER, FLAT	
2	26	SCBS0632BC22	SCREW, MACHINE	
1	25	CU-102-3	CLAMP, G TYPE	
2	24	FW06HRC	WASHER, FLAT	
-	23	-	DELETED	
1	22	CU-102-2	CLAMP, G TYPE	
1	21	LWE08MRC	WASHER, EXTERNAL	
6	20	SCBS0832BC14	SCREW, MACHINE	
1	19	MS-45A	BAR, SHORTING	
2	18	WA-100-1	WASHER, ASBESTOS	
2	17	SCBS1032BC16	SCREW, MACHINE	
-	16	-	DELETED	
2	15	FH-102	CLIP, FUSE	
1	14	MR-103-2	THERMO COUPLE	
2	13	SM-127-D-1032	NUT, LOCK	
2	12	MS-45B	BRACKET	
4	11	SCBS0832BC16	SCREW, MACHINE	
1	10	A-729-1	SWITCH-FEED THRU CONNECTOR	
20	9	FW08HRC	WASHER, FLAT	
1	8	TE-117-B	STAND OFF	
1	7	SCBS0832BC16	SCREW, MACHINE	
14	6	SM127-D-8-32	NUT, LOCK	
1	5	SCBS0832BC8	SCREW, MACHINE	
1	4	MS-45T	SPRING CONTACT	
1	3	PM-247	BUSHING	
1	2	PX-229	SUPPORT, COUNTER SHAFT	
1	1	PX-199	ELEMENT, FRONT	
REQ.	ITEM	PART NO.	DESCRIPTION	SYMBOL
THE TECHNICAL MATERIEL CORP. MAMARONECK, NEW YORK				
FRONT ELEMENT ASSY.				
TAC-1				
MATERIAL		WEIGHT PER PC.		
TYPE & TEMPER		C.D.S. 7/2/54		
HEAT TREAT. SPEC.		DRAWN		
		ELEC. DES. APP.		
		MECH. DES. APP.		
		CHECKED		
		FINAL APPROVAL		
		A-719 C		

NOTICE TO PERSONS RECEIVING THIS DRAWING

THE TECHNICAL MATERIEL CORPORATION claims proprietary right in the material disclosed herein. This drawing is issued in confidence for engineering information only and may not be reproduced or used to manufacture anything shown herein without permission from THE TECHNICAL MATERIEL CORPORATION to the user. This drawing is loaned for mutual assistance and is subject to recall at any time.

Property of:
 THE TECHNICAL MATERIEL CORPORATION
 MAMARONECK, NEW YORK

1	TAC-1	132	A-723	1-25-54
MODEL	PROJECT NO.	ASSY. NO.	DATE	
USED ON				

A-719 C