

IF IT IS FOUND DESIRABLE TO CHANGE ANY TOLERANCE OR OTHER DETAIL SPECIFIED ON THIS DRAWING NOTIFY THE PURCHASER PROMPTLY.

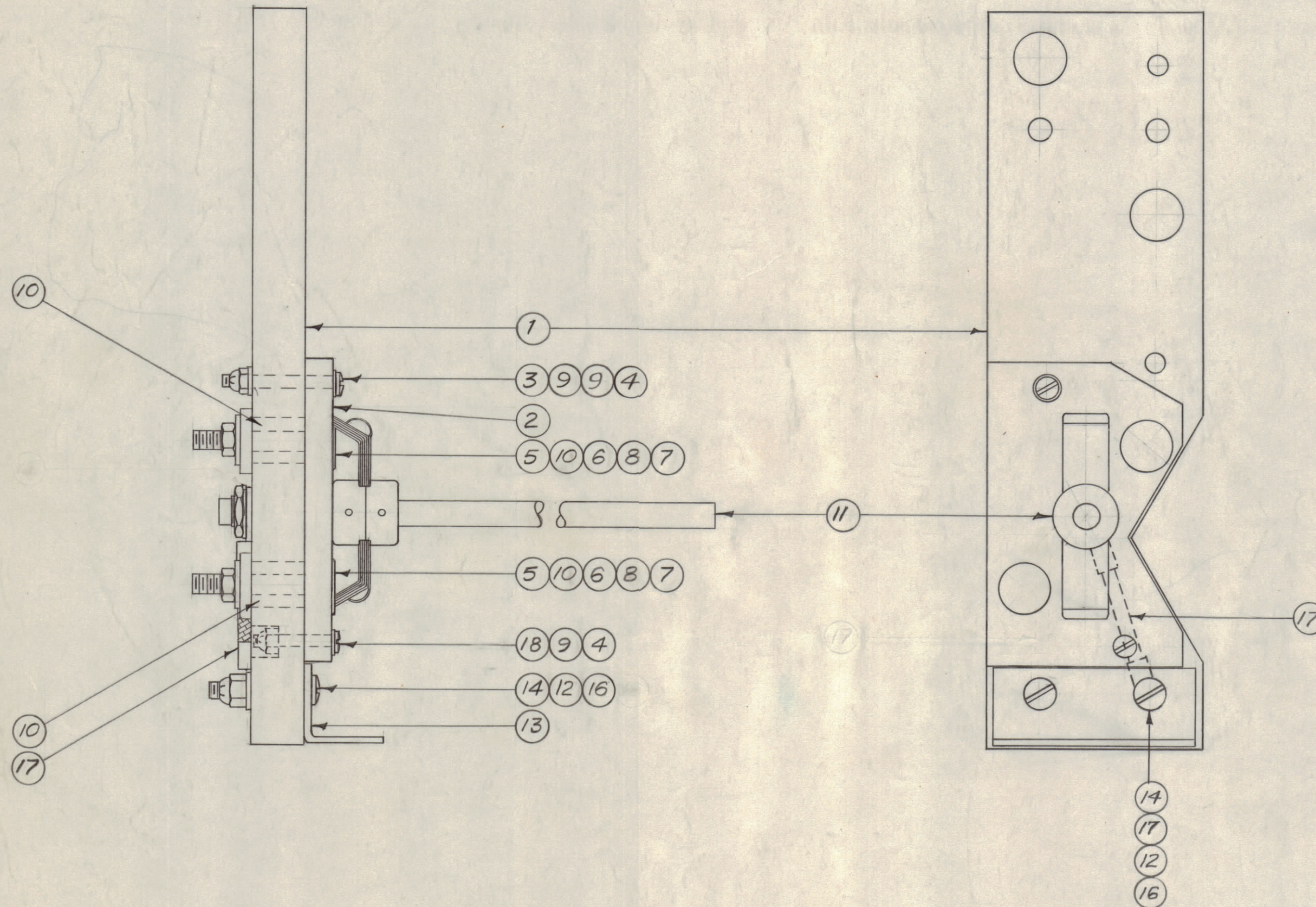
MAXIMUM ALLOWABLE TOLERANCES HAVE BEEN DETERMINED AND DEVIATIONS WILL BE CAUSE FOR REJECTION. REMOVE ALL BURRS AND SHARP EDGES

NOTICE TO PERSONS RECEIVING THIS DRAWING

THE TECHNICAL MATERIEL CORPORATION claims proprietary right in the material disclosed herein. This drawing is issued in confidence for engineering information only and may not be reproduced or used to manufacture anything shown hereon without permission from THE TECHNICAL MATERIEL CORPORATION to the user. This drawing is loaned for mutual assistance and is subject to recall at any time.

Property of:

THE TECHNICAL MATERIEL CORPORATION
MAMARONECK, NEW YORK



A-720 D

X	19	BS-100	SOLDER, SOFT
1	18	SCBS0440BC10	SCREW, MACHINE
1	17	A-730	LEAD, CONNECTING
2	16	SM127D832	NUT, LOCK
	15		DELETED
2	14	SCBS0832BC14	SCREW, MACHINE
1	13	MS-458	BRACKET
1	12	FW08HRC	WASHER, FLAT
1	11	A-673	DOUBLE LEAF SWITCH ASS'Y.
2	10	PX-223	BUSHING, TEFLON
3	9	FW04HRC	WASHER, FLAT
2	8	FW10HRC	WASHER, FLAT
2	7	NTH1032BC12	NUT, HEX.
2	6	PX-222	WASHER, TEFLON
2	5	SM-125	CONTACT
2	4	SM127D440	NUT, LOCK
1	3	SCBS0440BC16	SCREW, MACHINE
1	2	PX-237	SPACER PLATE, LOAD SWITCH
1	1	PX-200	BRACKET, COUPLING SWITCH

REQ. ITEM	PART NO.	DESCRIPTION	SYMBOL
//			
STOCK SIZE			
//			
MATERIAL	WEIGHT PER PC.		
//			
TYPE & TEMPER			
//			
HEAT TREAT. SPEC.			
//			
FINISH & SPEC. NO.			

D	1	ITEMS 8, 9, & 12 WERE "MRC"	4/15/57	4	15		
C	1	REDRAWN, COMPLETE REV.	12/2/56	3	16		

ISSUE	ITEM	CHANGED FROM	DATE	CN. NO.	DRAFTS	CHECKER	ENG. APP.
TOLERANCES							
SCALE: FULL							
ALL OTHERS		DEC. DIM. ± FRAC. DIM. ± ANGULAR DIM. ±	DRILL, PUNCH, COMMERCIAL STOCK SIZES AND MANUFACTURERS TOLERANCES ARE NOT INCLUDED.				

1	TAC-1	132	A-723	12-3-56
REQ PER UNIT	MODEL	PROJECT NO.	ASS'Y. NO.	DATE
USED ON				

A-720 D