

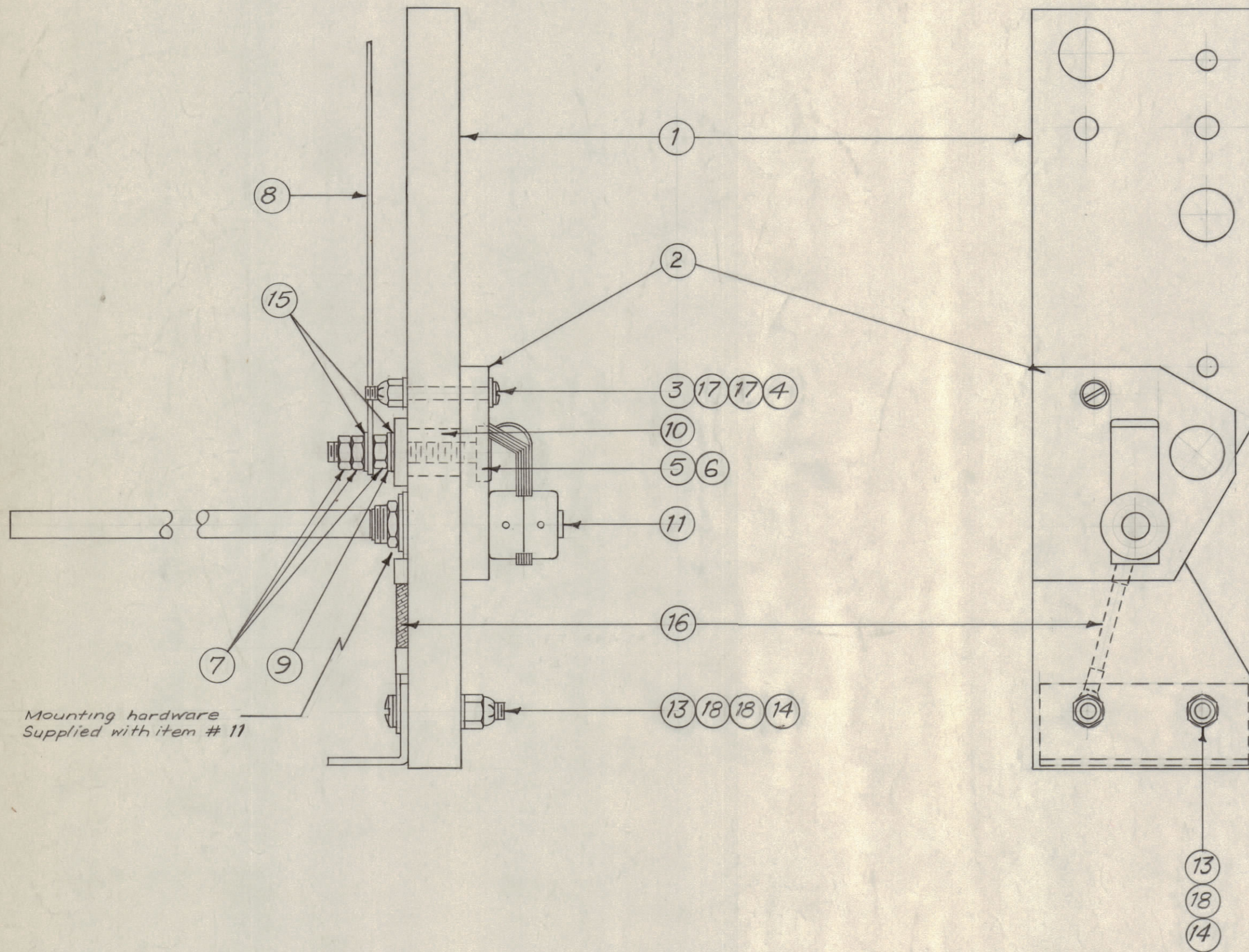
IF IT IS FOUND DESIRABLE TO CHANGE ANY TOLERANCE OR OTHER DETAIL SPECIFIED ON THIS DRAWING NOTIFY THE PURCHASER PROMPTLY.

MAXIMUM ALLOWABLE TOLERANCES HAVE BEEN DETERMINED AND DEVIATIONS WILL BE CAUSE FOR REJECTION. REMOVE ALL BURRS AND SHARP EDGES

NOTICE TO PERSONS RECEIVING THIS DRAWING

THE TECHNICAL MATERIEL CORPORATION claims proprietary right in the material disclosed hereon. This drawing is issued in confidence for engineering information only and may not be reproduced or used to manufacture anything shown hereon without permission from THE TECHNICAL MATERIEL CORPORATION to the user. This drawing is loaned for mutual assistance and is subject to recall at any time.

Property of:
THE TECHNICAL MATERIEL CORPORATION
MAMARONECK, NEW YORK



A-722 E

3	18	FW08HRC	WASHER, FLAT	
2	17	FW04HRC	WASHER, FLAT	
1	16	A-730	CONNECTOR ASS'Y.	
2	15	FW10HRC	WASHER, FLAT	
2	14	SM127D832	NUT, LOCK	
2	13	SCBS0832BC14	SCREW, MACHINE	
1	12	MS-458	BRACKET	
1	11	A-672	SINGLE LEAF SWITCH ASS'Y.	
1	10	PX-223	BUSHING, TEFLON	
1	9	LW110MRC	WASHER, LOCK, INT.	
1	8	MS-525-2	LINK, CONNECTING	
3	7	NTH1032BC12	NUT, HEX.	
1	6	PX-222	WASHER, TEFLON	
1	5	SM-125	CONTACT	
1	4	SM127D440	NUT, LOCK	
1	3	SCBS0440BC16	SCREW, MACHINE	
1	2	PX-236	SPACER PLATE, ROTOR SW.	
1	1	PX-201	BRACKET, BAND SW.	

REQ. ITEM	PART NO.	DESCRIPTION	SYMBOL
//			
STOCK SIZE			
//			
MATERIAL WEIGHT PER PC.			
//			
TYPE & TEMPER			
//			
HEAT TREAT. SPEC.			
//			
FINISH & SPEC. NO.			

THE TECHNICAL MATERIEL CORP.
MAMARONECK, NEW YORK
BAND SWITCH BRACKET
SUB-ASS'Y. TAC-1
1612-4-56
DRAWN: JAC
ELEC. DES. APP. [Signature]
MECH. DES. APP. [Signature]
CHECKED: [Signature]
FINAL APPROVAL: [Signature]
A-722 E

E	1	ITEMS 15, 17, & 18 WERE "MRC"	4/5/57	5	16	JAC	[Signature]
D	1	REDDRAWN, COMPL. REV.	12/4/56	4	15	JAC	[Signature]
ISSUE	ITEM	CHANGED FROM	DATE	CN. NO.	DRAFTS	CHECKER	ENG. APP.
TOLERANCES			SCALE: FULL				
ALL OTHERS	DEC. DIM. ± FRAC. DIM. ± ANGULAR DIM. ±		DRILL, PUNCH, COMMERCIAL STOCK SIZES AND MANUFACTURERS TOLERANCES ARE NOT INCLUDED.				

1	TAC-1	132	A-723	12-4-56
REQ. PER UNIT	MODEL	PROJECT NO.	ASS'Y. NO.	DATE
USED ON				