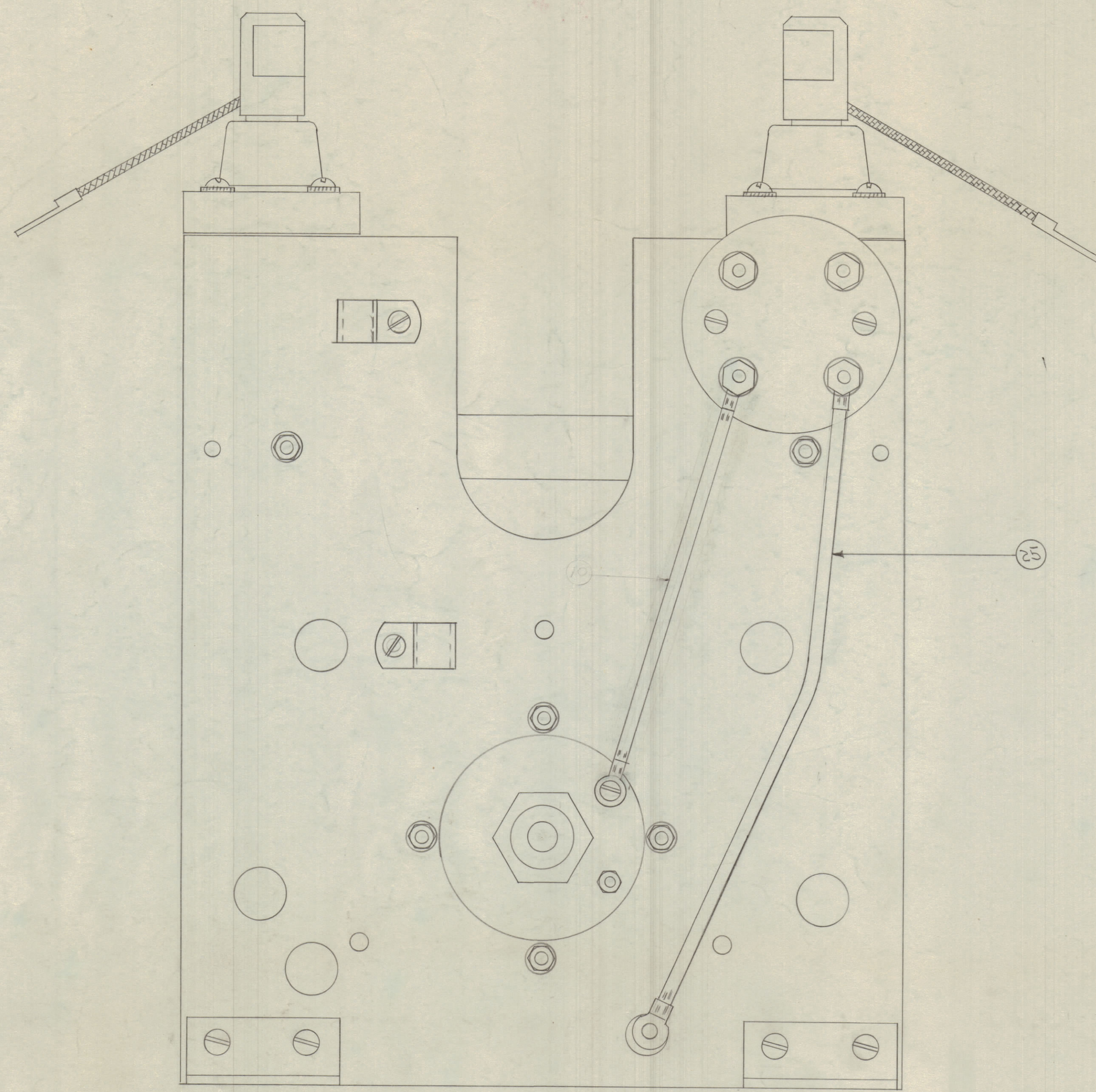
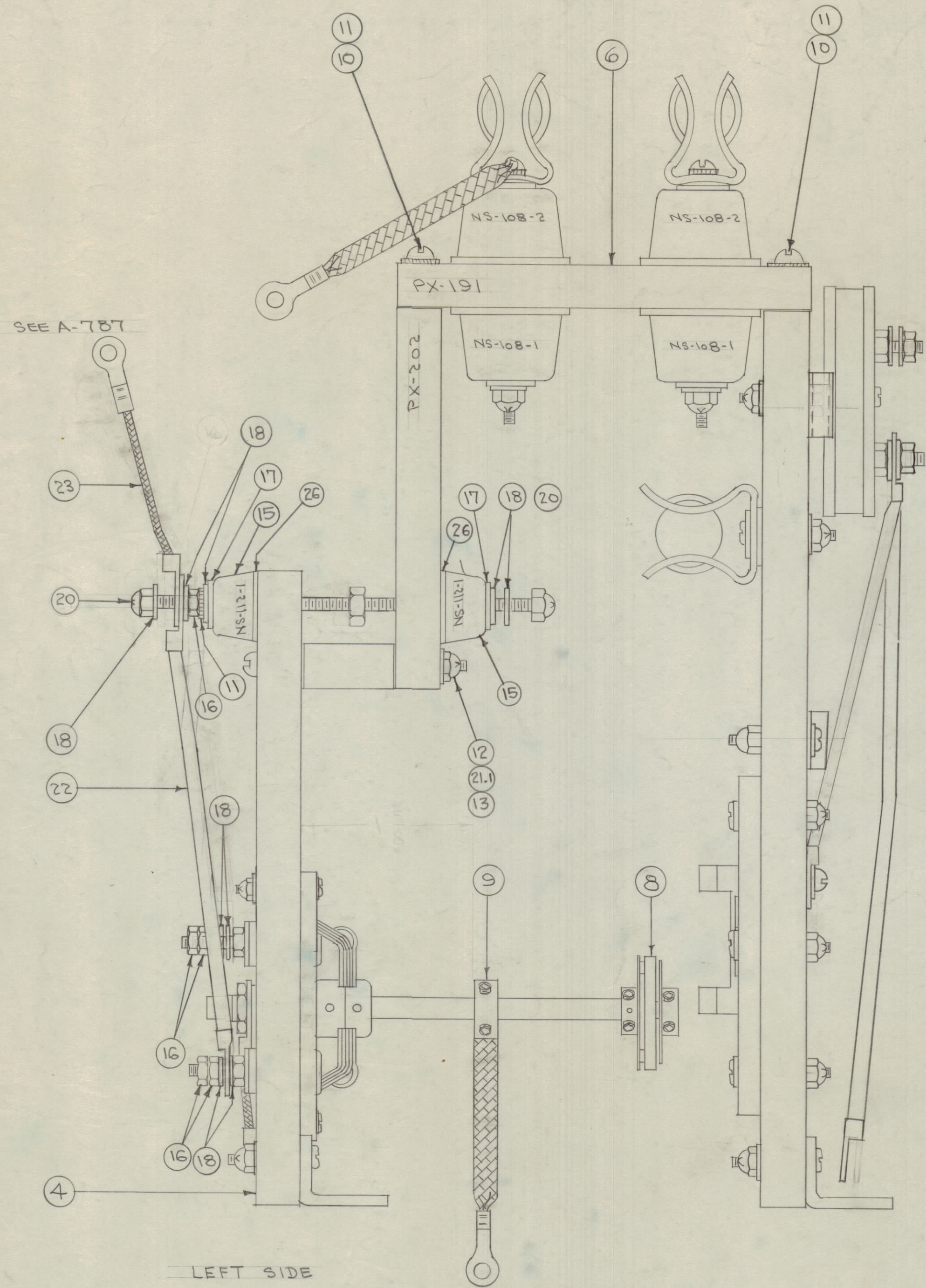


IF IT IS FOUND DESIRABLE TO CHANGE ANY TOLERANCE OR OTHER DETAIL SPECIFIED ON THIS DRAWING NOTIFY THE PURCHASER PROMPTLY.

MAXIMUM ALLOWABLE TOLERANCES HAVE BEEN DETERMINED AND DEVIATIONS WILL BE CAUSE FOR REJECTION. REMOVE ALL BURRS AND SHARP EDGES



NOTICE TO PERSONS RECEIVING THIS DRAWING

THE TECHNICAL MATERIEL CORPORATION claims proprietary right in the material disclosed herein. This drawing is issued in confidence for engineering information only and may not be reproduced or used to manufacture anything shown herein without permission from THE TECHNICAL MATERIEL CORPORATION to the user. This drawing is loaned for mutual assistance and is subject to recall at any time.

Property of:  
THE TECHNICAL MATERIEL CORPORATION  
MAMARONECK, NEW YORK

4	26	GA-118	WASHER
1	25	A-727	CONNECTOR ASSY.
X	24	BS-100	SOLDER, SOFT
1	23	A-746	CONNECTOR ASSY.
1	22	A-729-2	" "

REQ. ITEM	PART NO.	DESCRIPTION	SYMBOL
THE TECHNICAL MATERIEL CORP. MAMARONECK, NEW YORK			
PHENOLIC SUB ASSEMBLY (FRONT SECTION) TAC-1			
DRAWN: CDD/vst/v ELEC. DES. APP. [Signature] MECH. DES. APP. [Signature]			
CHECKED: [Signature] FINAL APPROVAL: [Signature]			
SHEET 2 OF 2			
A-723 B			

1	TAC-1	132	A-782	1-27-54
MODEL	PROJECT NO.	ASSY. NO.	DATE	
USED ON				

ISSUE	ITEM	CHANGED FROM	DATE	CH. NO.	DRAFTS	CHECKER	ENG. APP.
TOLERANCES							
ALL OTHERS				SCALE:			
DEC. DIM. ±				DRILL PUNCH COMMERCIAL STOCK			
FRAC. DIM. ±				SIZES AND MANUFACTURERS			
ANGULAR DIM. ±				TOLERANCES ARE NOT INCLUDED.			

A-723 B