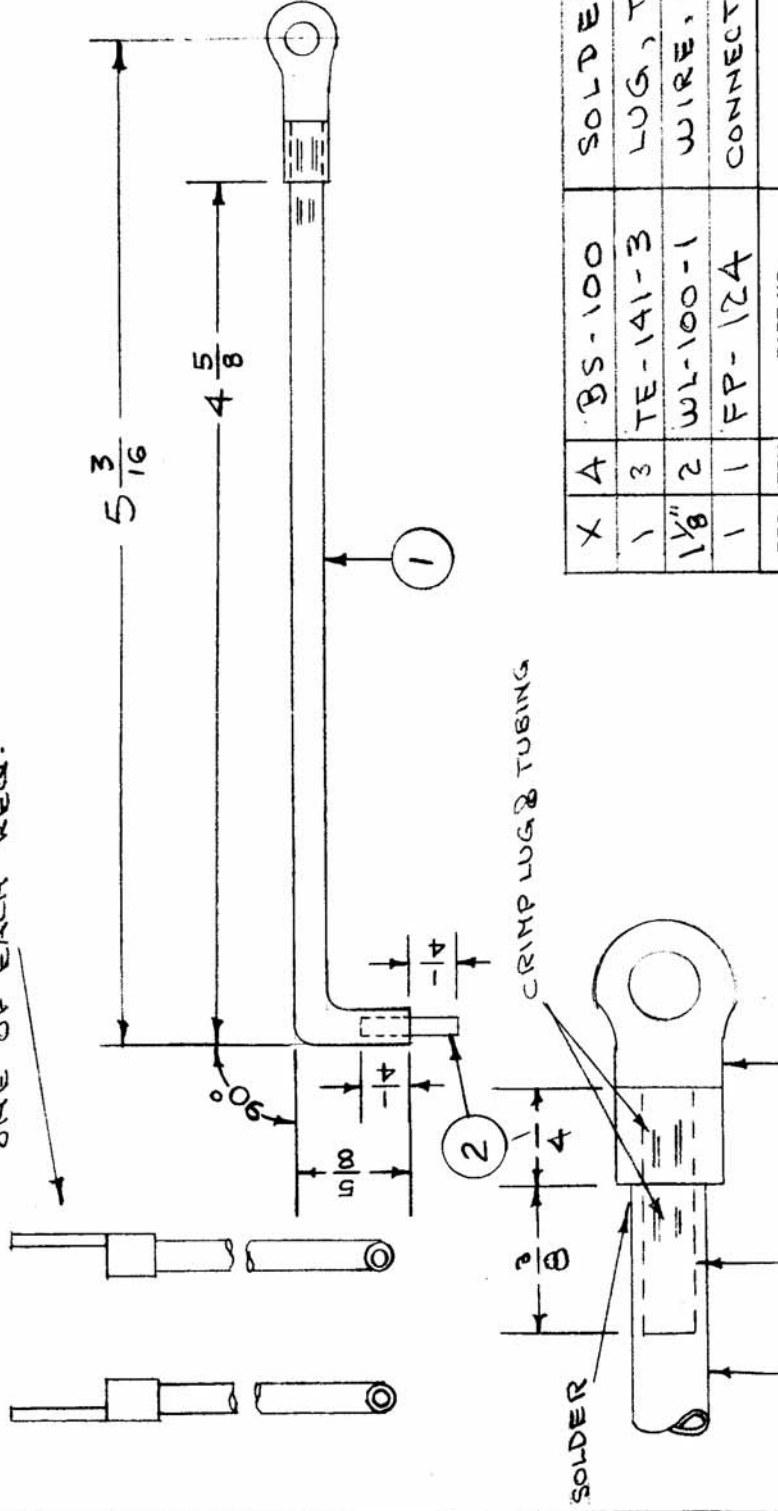


IF IT IS FOUND DESIRABLE TO CHANGE ANY TOLERANCE OR OTHER DETAIL SPECIFIED ON THIS DRAWING NOTIFY THE PURCHASER PROMPTLY.

MAXIMUM ALLOWABLE TOLERANCES HAVE BEEN DETERMINED AND DEVIATIONS WILL BE CAUSE FOR REJECTION. REMOVE ALL BURRS AND SHARP EDGES

LUG DETAIL

NOTE POSITION OF LUGS ONE OF EACH REQ.



3	ITEM 3 WAS TE-141-1	4/9/57	4	16	WAS ON
D	2 5 3/16 DIM. ADDED				
	1 A 5/8 REF. CHGD.				
C	2 ITEM 1 DIM. ADDED	10/29/56	3	16	HND
	1 1/2" of item 2 added.				
B	1 ITEM 3 WAS TE-141-3	11/11/54	2		WAS ON
A	1 LUG DETAIL ADDED	9/14/54	1		WAS ON
ISSUE	ITEM	CHANGED FROM	DATE	CN. NO.	DRAFTS CHECKER/ENG. APP.
TOLERANCES					
SCALE					

DEC. DIM. ±
ALL FRAC. DIM. ± 1/64
OTHERS ANGULAR DIM. ±

DRILL, PUNCH, COMMERCIAL STOCK SIZES AND MANUFACTURERS TOLERANCES ARE NOT INCLUDED.

A-732 D

REQ. PER UNIT	2
MODEL	TAC-1
PROJECT NO.	132
ASS'Y. NO.	A-674
DATE	1-18-54

USED ON

REQ. ITEM	PART NO.	DESCRIPTION	SYMBOL
X A	BS-100	SOLDER, SOFT	
1	TE-141-3	LUG, TERMINAL	
1 1/8"	WL-100-1	WIRE, BUSS BAR	
1	FP-12A	CONNECTOR (COIL TO COIL) N.D.	

THE TECHNICAL MATERIEL CORP.
MAMARONECK, NEW YORK
CONNECTOR ASSY. COIL TO COIL
TAC-1

DRAWN	C.D.D	ELEC. DES. APP.	WJS	MECH. DES. APP.	WJS
CHECKED	P.R	ELEC. DES. APP.	WJS	MECH. DES. APP.	WJS
FINAL APPROVAL					

HEAT TREAT. SPEC.
SILVER PLATE .0003
FINISH & SPEC. NO.

A-732 D