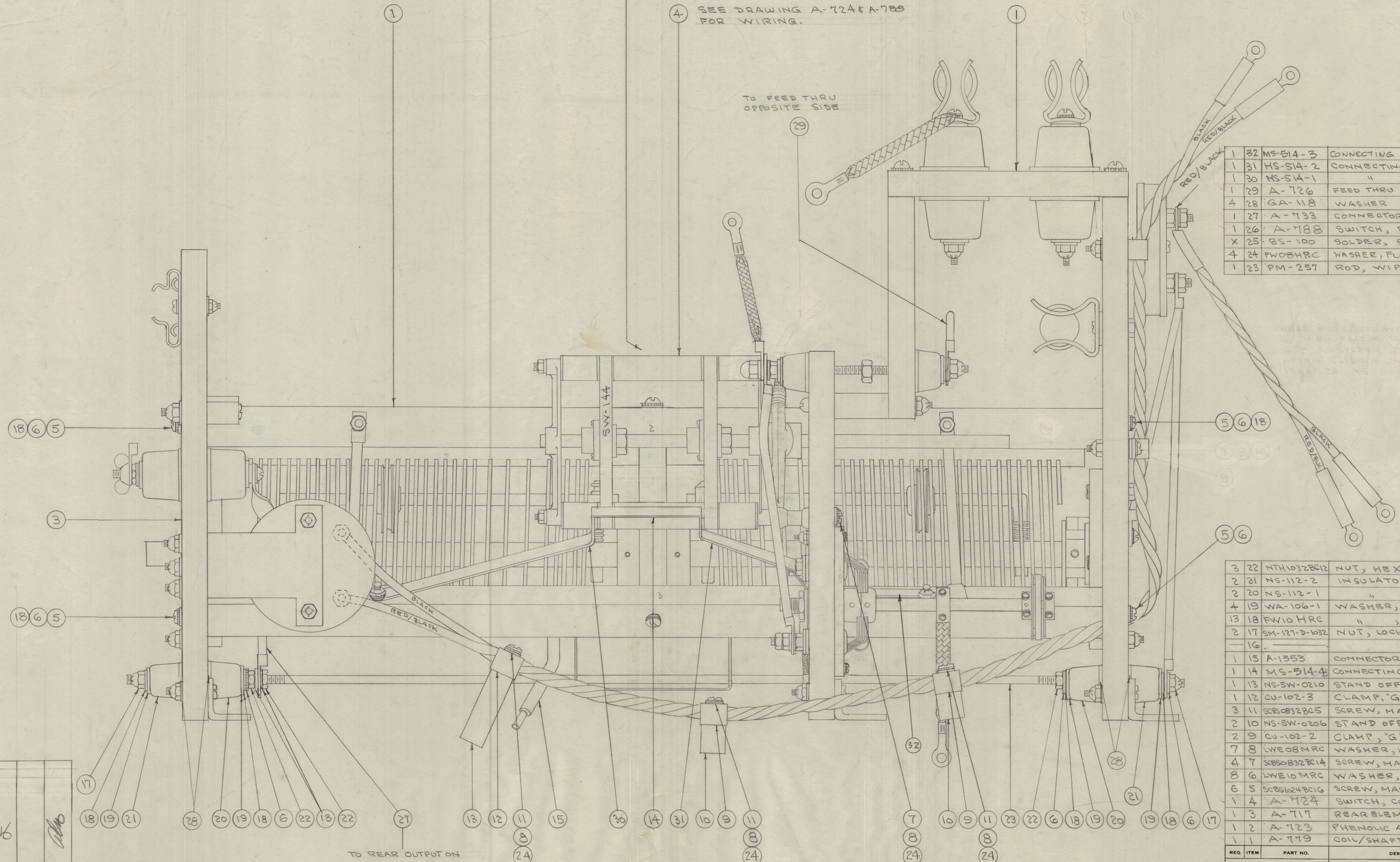


IF IT IS FOUND DESIRABLE TO CHANGE ANY TOLERANCE OR OTHER DETAIL SPECIFIED ON THIS DRAWING NOTIFY THE PURCHASER PROMPTLY.
 MAXIMUM ALLOWABLE TOLERANCES HAVE BEEN DETERMINED AND DEVIATIONS WILL BE CAUSE FOR REJECTION. REMOVE ALL BURRS AND SHARP EDGES

26 FASTEN SW-145 IN SAME POSITION ON OPPOSITE SIDE WITH ITEMS 7 & 8. (SEE DWG A-788 FOR WIRING).

4 SEE DRAWING A-724 & A-788 FOR WIRING.

TO FEED THRU OPPOSITE SIDE



1	32	MS-514-3	CONNECTING STRAP
1	31	MS-514-2	CONNECTING STRAP
1	30	MS-514-1	"
1	29	A-726	FEED THRU CON. ASSY.
4	28	GA-118	WASHER
1	27	A-733	CONNECTOR, OUTPUT
1	26	A-788	SWITCH, BAND
X	25	BS-100	SOLDER, SOFT
4	24	FWD8HRC	WASHER, FLAT
1	23	PM-257	ROD, WIPER

3	22	NTH1032802	NUT, HEX
2	21	NS-112-2	INSULATOR
2	20	NS-112-1	"
4	19	WA-106-1	WASHER, FIBER
13	18	FW10HRC	" , FLAT
2	17	SM-127-D-1632	NUT, LOCK
1	16		
1	15	A-1553	CONNECTOR, INPUT
1	14	MS-514-4	CONNECTING STRAP
1	13	NS-SW-0210	STAND OFF
1	12	CU-102-3	CLAMP, "G" TYPE
3	11	SC850832805	SCREW, MACHINE
2	10	NS-SW-0206	STAND OFF
2	9	CU-102-2	CLAMP, "G" TYPE
7	8	LWE08MRC	WASHER, LOCK
4	7	SC850832804	SCREW, MACHINE
8	6	LWE10MRC	WASHER, LOCK
6	5	SC851248016	SCREW, MACHINE
1	4	A-724	SWITCH, COUPLING
1	3	A-717	REAR ELEMENT ASSY.
1	2	A-723	PHENOLIC ASSY. (FRONT SECTION)
1	1	A-779	COIL/SHAFT ASSY.

NOTICE TO PERSONS RECEIVING THIS DRAWING

THE TECHNICAL MATERIEL CORPORATION claims proprietary right in the material disclosed herein. This drawing is issued in confidence for engineering information only and may not be reproduced or used to manufacture anything shown herein without permission from THE TECHNICAL MATERIEL CORPORATION to the user. This drawing is loaned for mutual assistance and is subject to recall at any time.

Property of:
 THE TECHNICAL MATERIEL CORPORATION
 MAMARONECK, NEW YORK

15	ITEM 14 WAS MS-514-2				
14	ITEM 15 WAS FP-12-2				
13	ITEM 12 WAS CU-102-4				
12	ITEM 9 WAS CU-102-3				
11	PICTORIAL CHG & CLARIFIED				
10	ITEM 24 & 32 ADDED				
9	ITEM 18 WAS FW10MRC				
8	ITEM 18 WAS 4 REQ				
7	ITEM 16 D81E (SPLIT)				
6	ITEM 12 WAS 2 REQ				
5	ITEM 9 WAS 3 REQ				
4	ITEM 8 WAS 9 REQ				
3	ITEM 7 WAS 6 REQ				
2	ITEM 6 WAS 10 REQ				
1	ITEM 5 WAS 1 REQ				
3	ITEM 12 WAS CU-102-3				
2	ITEM 9 WAS CU-102-4	11-22-54	2	FP. JAR	
1	ITEM 5 WAS 6 REQ				
3	ITEM 31 ADDED	8/4/54	1	CDD	
2	"				
1	ITEM 14 WAS MS-514				

ISSUE	ITEM	CHANGED FROM	DATE	CN. NO.	DRAFTS	CHECKER	ENG. APP.
ALL	OTHERS	DEC. DIM. ± FRAC. DIM. ± ANGULAR DIM. ±				DRILL, PUNCH, COMMERCIAL STOCK SIZES AND MANUFACTURERS TOLERANCES ARE NOT INCLUDED.	

1	TAC-1	132	A-787	1-28-54
MODEL	PROJECT NO.	ASSY. NO.	DATE	

THE TECHNICAL MATERIEL CORP. MAMARONECK, NEW YORK			
TUNING COIL/SWITCH ASSY.			
MATERIAL WEIGHT PER PC. TAC-1			
TYPE & TEMPER. CDD-1/2/54			
HEAT TREAT. SPEC. DRAWN ELEC. DES. APP. MECH. DES. APP.			
FINISH & SPEC. NO. CHECKED FINAL APPROVAL			
A-782 C			