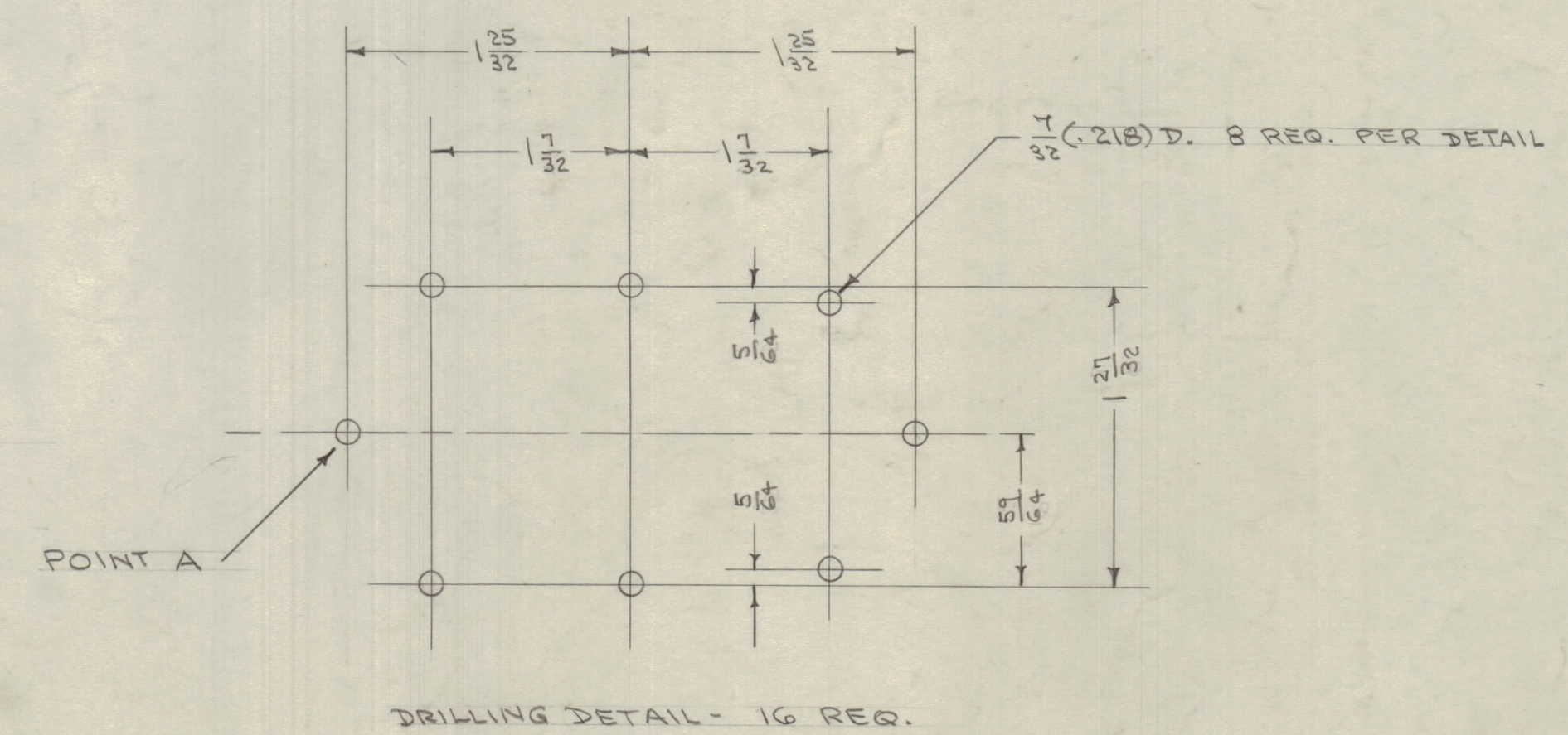
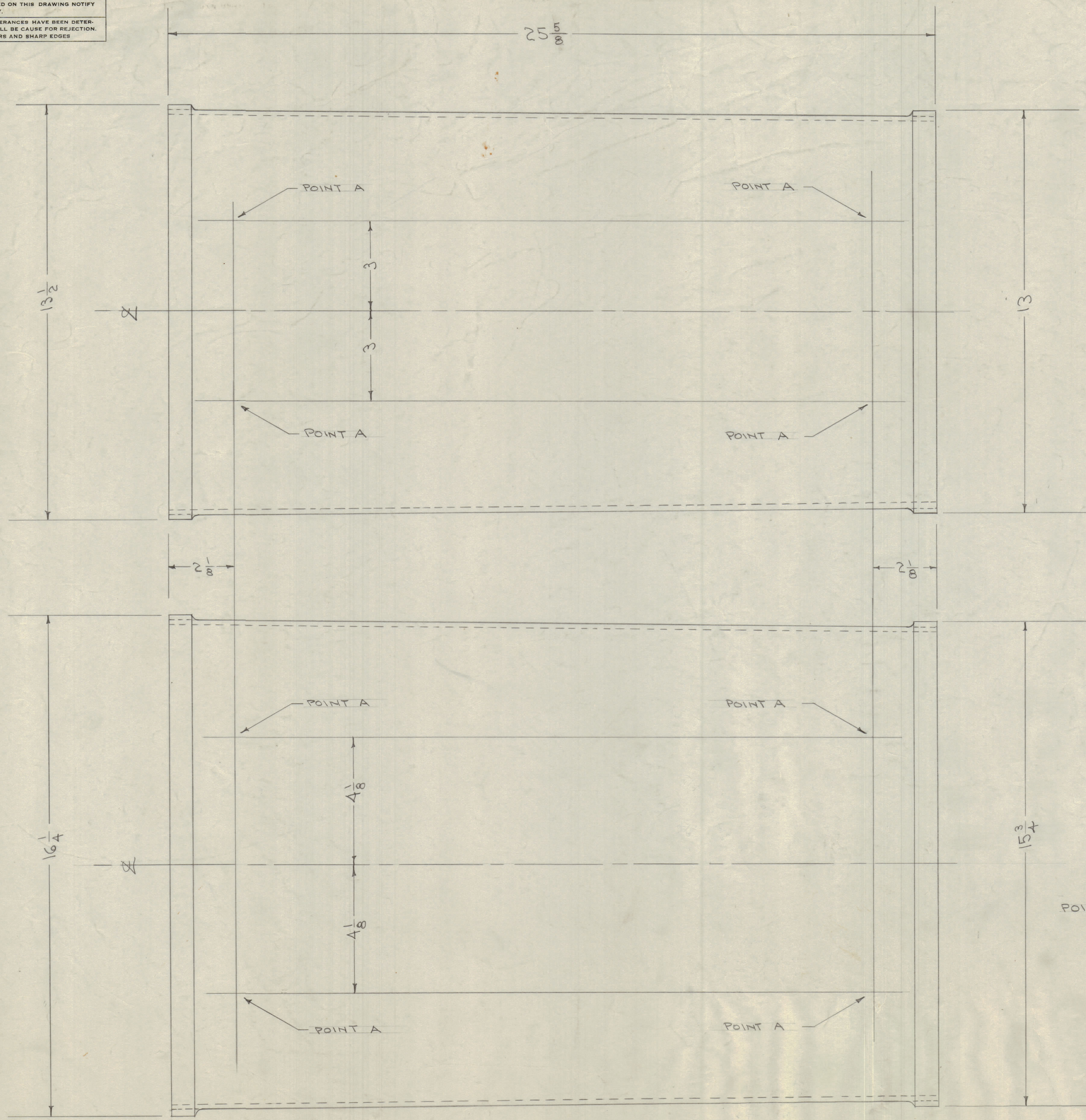


IF IT IS FOUND DESIRABLE TO CHANGE ANY TOLERANCE OR OTHER DETAIL SPECIFIED ON THIS DRAWING NOTIFY THE PURCHASER PROMPTLY.
 MAXIMUM ALLOWABLE TOLERANCES HAVE BEEN DETERMINED AND DEVIATIONS WILL BE CAUSE FOR REJECTION. REMOVE ALL BURRS AND SHARP EDGES



DRILLING DETAIL - 16 REQ.

NOTICE TO PERSONS RECEIVING THIS DRAWING

THE TECHNICAL MATERIEL CORPORATION claims proprietary right in the material disclosed herein. This drawing is issued in confidence for engineering information only and may not be reproduced or used to manufacture anything shown hereon without permission from THE TECHNICAL MATERIEL CORPORATION to the user. This drawing is loaned for mutual assistance and is subject to recall at any time.

Property of:
 THE TECHNICAL MATERIEL CORPORATION
 MAMARONECK, NEW YORK

1	3	MS-529	REAR RING	
1	2	MS-528	FRONT RING	
X	1		FIBERGLAS	
REQ. ITEM	PART NO.	DESCRIPTION		SYMBOL
THE TECHNICAL MATERIEL CORP.				
MAMARONECK, NEW YORK				
CASE, PROTECTIVE				
MATERIAL		WEIGHT PER PC.		
TYPE & TEMPER		COD		
DRAWN		ELEC. DES. APP.		MECH. DES. APP.
HEAT TREAT. SPEC.		CHECKED		
FINISH & SPEC. NO.				A-796

ISSUE	ITEM	CHANGED FROM	DATE	CN. NO.	DRAFTS	CHECKER	ENG. APP.
TOLERANCES							
SCALE:							
DRILL PUNCH, COMMERCIAL STOCK SIZES AND MANUFACTURERS TOLERANCES ARE NOT INCLUDED.							
ALL	DEC. DIM.	±					
OTHERS	FRAC. DIM.	±					
	ANGULAR DIM.	±					

CTAC	311	A-799	7-1-54
MODEL	PROJECT NO.	ASSY. NO.	DATE
USED ON			

A-796