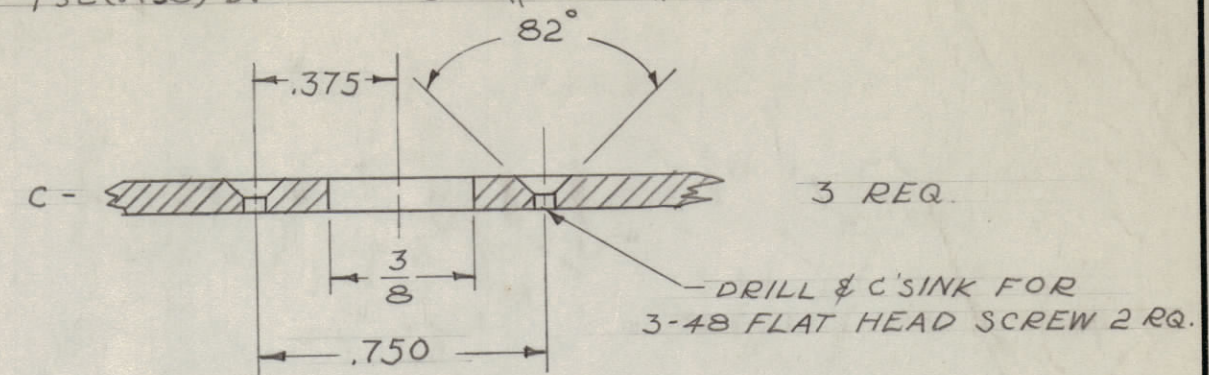


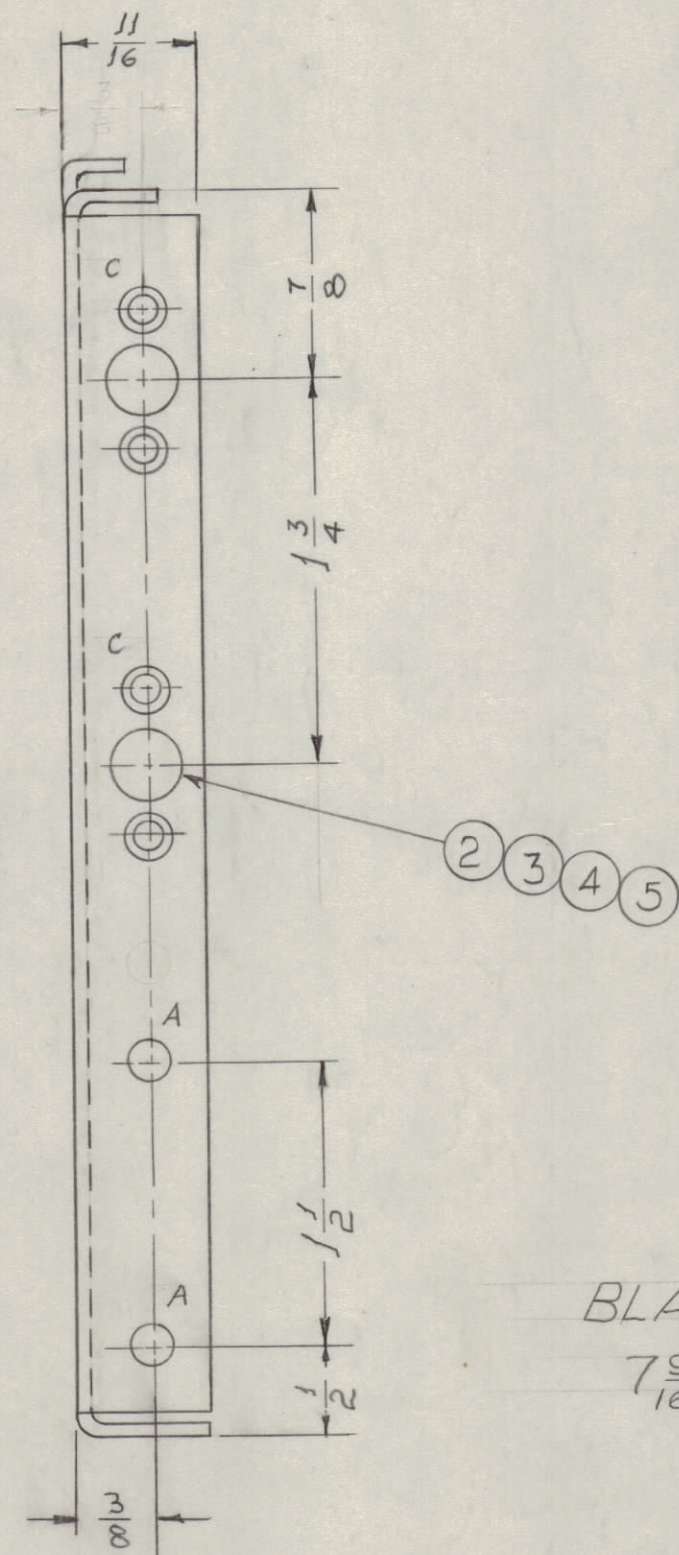
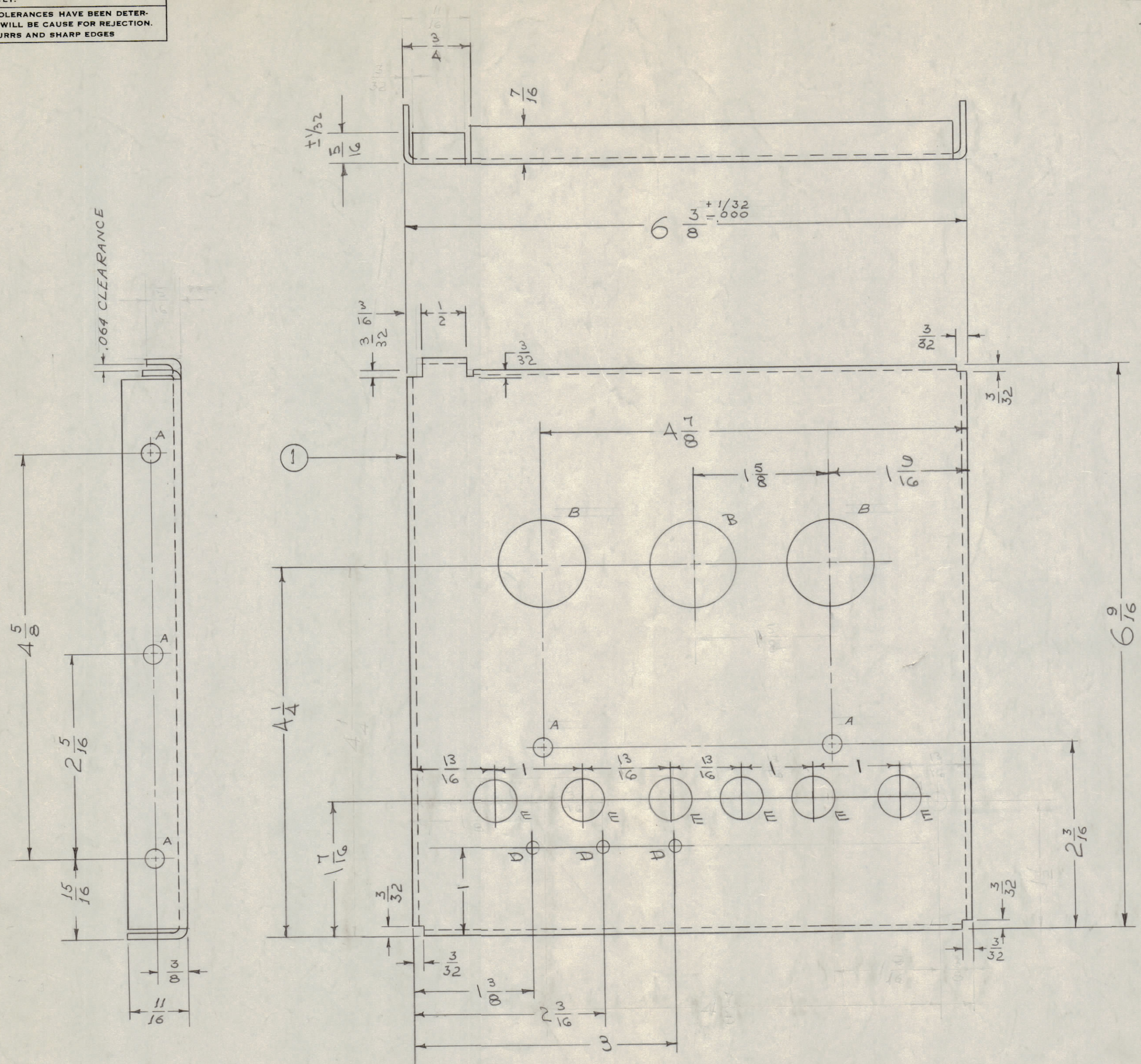
IF IT IS FOUND DESIRABLE TO CHANGE ANY TOLERANCE OR OTHER DETAIL SPECIFIED ON THIS DRAWING NOTIFY THE PURCHASER PROMPTLY.

MAXIMUM ALLOWABLE TOLERANCES HAVE BEEN DETERMINED AND DEVIATIONS WILL BE CAUSE FOR REJECTION. REMOVE ALL BURRS AND SHARP EDGES

A - 13/64 (.203) D. 7 HOLES REQ.
 B - 1 (.000) D. 3 HOLES REQ.
 D - 5/32 (.156) D. 3 " " "



E - 1/2 (.500) DIA 6 HOLES REQ.



A-821 E

BLANK SIZE
 7 9/16 x 7 1/2

ISSUE	ITEM	CHANGED FROM	DATE	CN. NO.	DRAFTS	CHECKER	ENG. APP.
E	1	1/2 (.500) DIA HOLES WERE 3/8 (.375)	7-9-63	9521	WY	W.P.	W.P.
D	2	LD REF # RSC-3 REF ADDED HDWR UPDATED & STANDARDIZED	6-12-63	9249	WY	W.P.	W.P.
C	1	S404 IRIDITE WAS S101 CAUSTIC DIP	12-9-59	1001	WY	EMN	EMN
B	1	E HOLES WERE 1/2 DIA.	1-6-56	2	WY	W.P.	W.P.
A	1	COMPLETE REVISION	11/29/54	1	WY	W.P.	W.P.

TOLERANCES		SCALE:
ALL OTHERS	DEC. DIM. ± FRAC. DIM. ± 1/64 ANGULAR DIM. ±	DRILL, PUNCH, COMMERCIAL STOCK SIZES AND MANUFACTURERS TOLERANCES ARE NOT INCLUDED.

MODEL	PROJECT NO.	ASS'Y. NO.	DATE
RSC-3	170		6-12-63
RSC-2 (A,B,C,D)			9-29-54

REQ.	ITEM	PART NO.	DESCRIPTION	SYMBOL
6	5	NTH0348BN6	NUT, HEX	
6	4	LWS03MRN	LOCKWASHER SPLIT	
6	3	SCFP0348BN4	SCREW, MACHINE	
3	2	FS-102-1	SPRING CLIP	
1	1	MS-582	RIGHT SIDE PLATE (NO DWG)	

THE TECHNICAL MATERIEL CORP.		MAMARONECK, NEW YORK	
STOCK SIZE		RIGHT SIDE PLATE	
MATERIAL	WEIGHT PER PC.	MODEL RSC	
ALUMINUM	—#		
525-H32		REV. 9-14/54	WZ
TYPE & TEMPER	—#	DRAWN	ELEC. DES. APP.
HEAT TREAT. SPEC.		11/15/54	A.J.J.
FINISH & SPEC. NO.	S404 YEL-IRIDITE	CHECKED	FINAL APPROVAL
	SUPERCEDES RSC-1		A-821 E

REF: LD-206