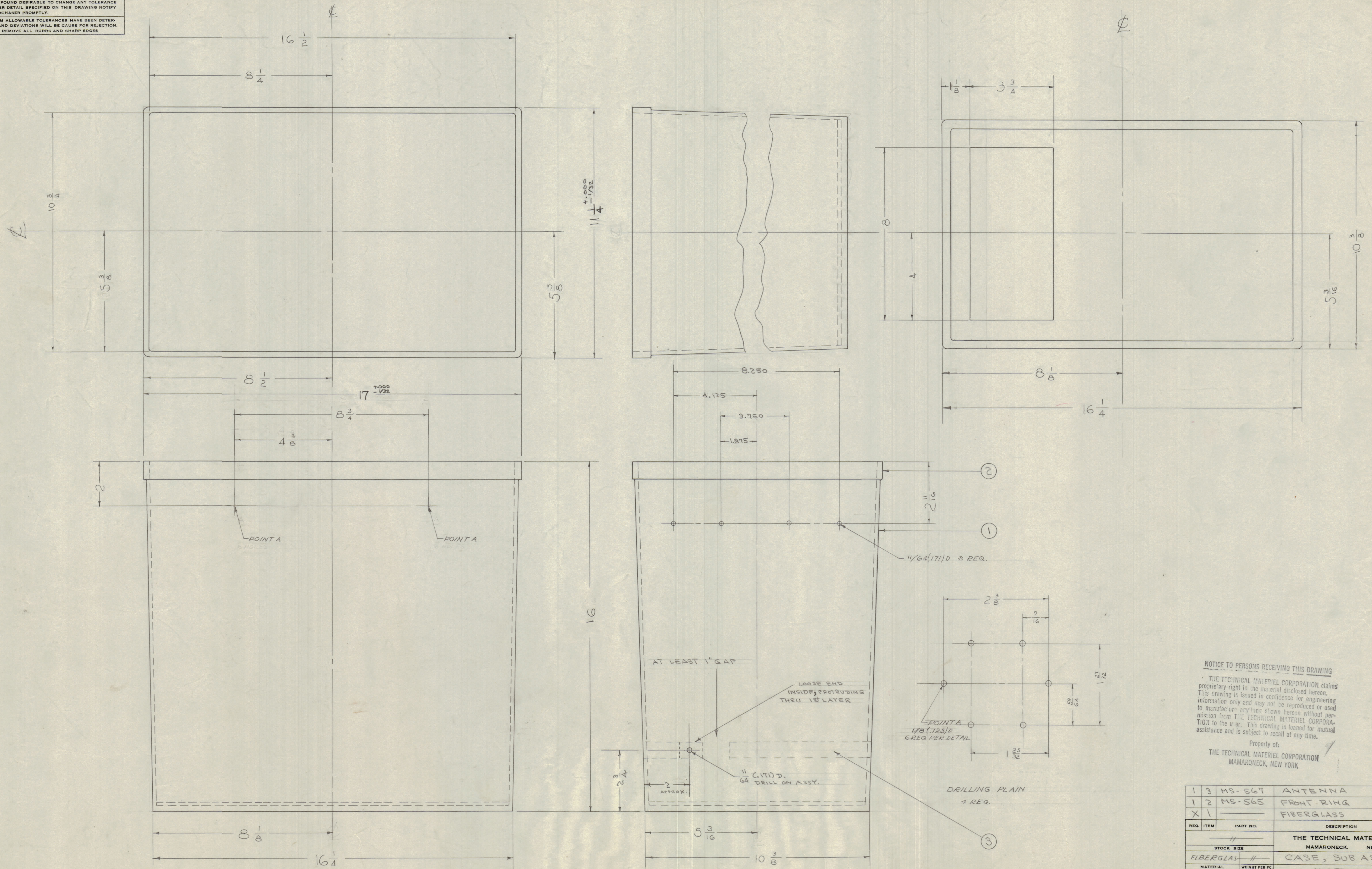
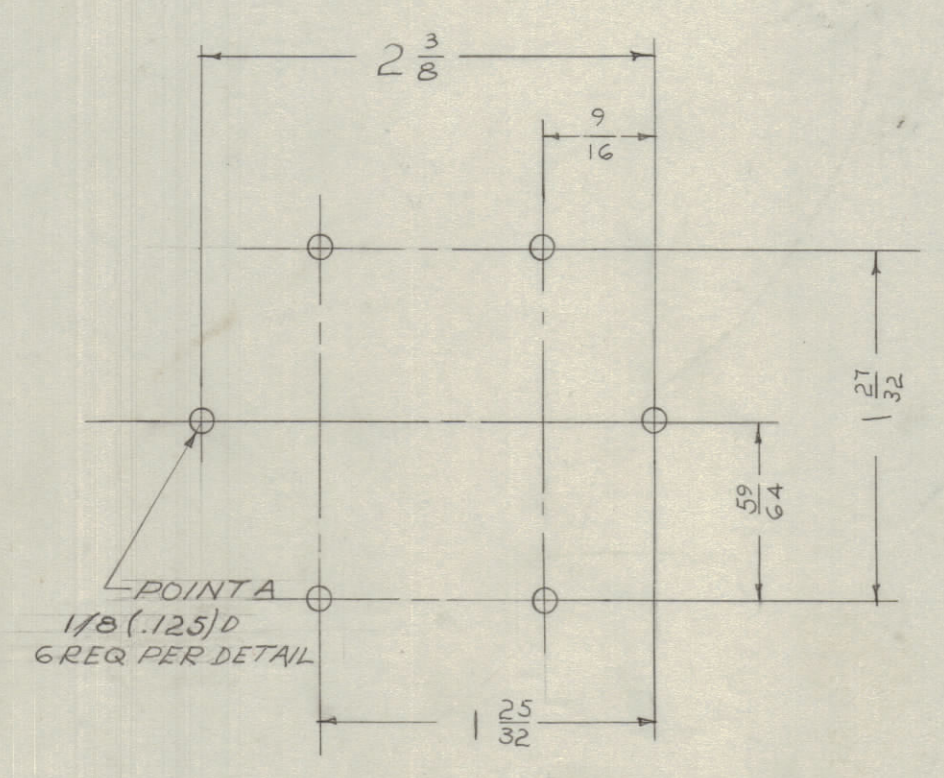


IF IT IS FOUND DESIRABLE TO CHANGE ANY TOLERANCE OR OTHER DETAIL SPECIFIED ON THIS DRAWING NOTIFY THE PURCHASER PROMPTLY.
 MAXIMUM ALLOWABLE TOLERANCES HAVE BEEN DETERMINED AND DEVIATIONS WILL BE CAUSE FOR REJECTION. REMOVE ALL BURRS AND SHARP EDGES



NOTICE TO PERSONS RECEIVING THIS DRAWING
 THE TECHNICAL MATERIEL CORPORATION claims proprietary right in the material disclosed herein. This drawing is issued in confidence for engineering information only and may not be reproduced or used to manufacture anything shown hereon without permission from THE TECHNICAL MATERIEL CORPORATION to the user. This drawing is loaned for mutual assistance and is subject to recall at any time.
 Property of:
 THE TECHNICAL MATERIEL CORPORATION
 MAMARONECK, NEW YORK



1	3	MS-567	ANTENNA	
1	2	MS-565	FRONT RING	
X	1		FIBERGLASS	
REQ. ITEM	PART NO.	DESCRIPTION		SYMBOL
THE TECHNICAL MATERIEL CORP. MAMARONECK, NEW YORK				
CASE, SUB ASSEMBLY				
MODEL CPMO				
STOCK SIZE				
FIBERGLAS #				
MATERIAL WEIGHT PER PC				
TYPE & TEMPER				
HEAT TREAT. SPEC.				
FINISH & SPEC. NO.				

1	CPMO	285	A-841	10-A-5A
REQ. PER UNIT	MODEL	PROJECT NO.	ASSY. NO.	DATE
USED ON				

ISSUE	ITEM	CHANGED FROM	DATE	CN. NO.	DRAFTS	CHECKER	ENG. APP.	
TOLERANCES								
SCALE:								
DRILL PUNCH, COMMERCIAL STOCK SIZES AND MANUFACTURERS TOLERANCES ARE NOT INCLUDED.								
ALL OTHERS	DEC. DIM. ±	FRAC. DIM. ±	ANGULAR DIM. ±					

A-837