

IF IT IS FOUND DESIRABLE TO CHANGE ANY TOLERANCE OR OTHER DETAIL SPECIFIED ON THIS DRAWING NOTIFY THE PURCHASER PROMPTLY.

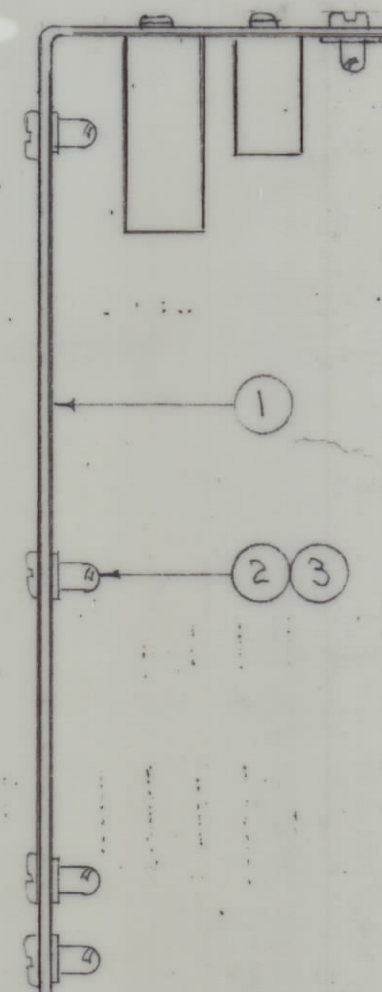
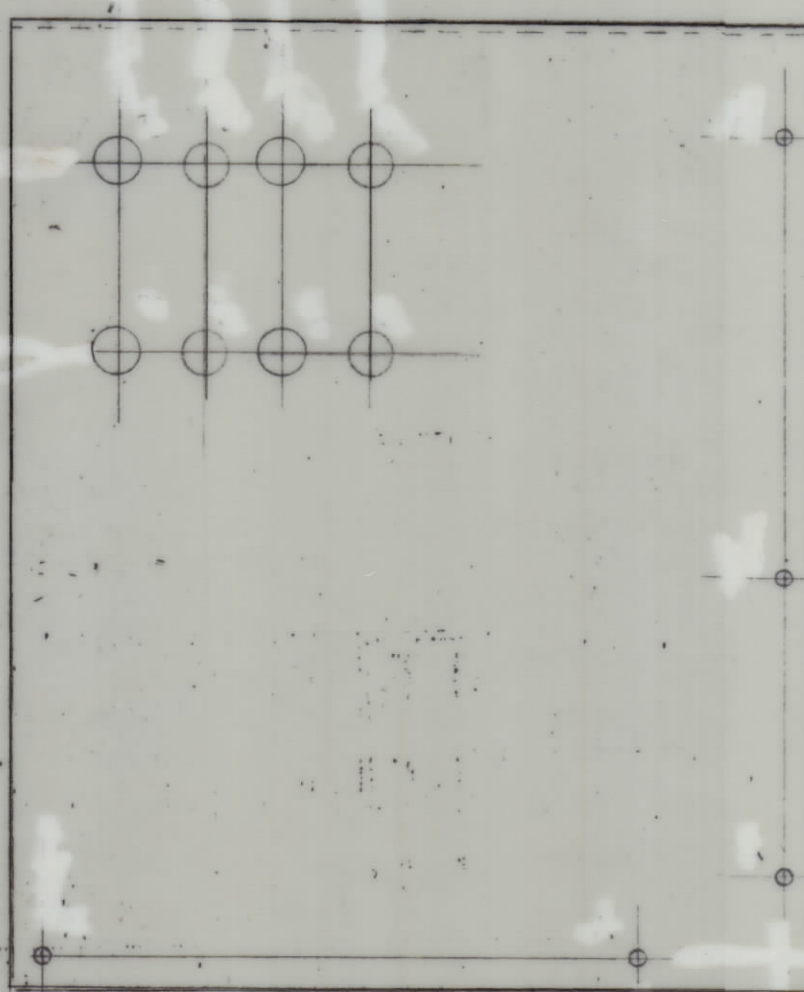
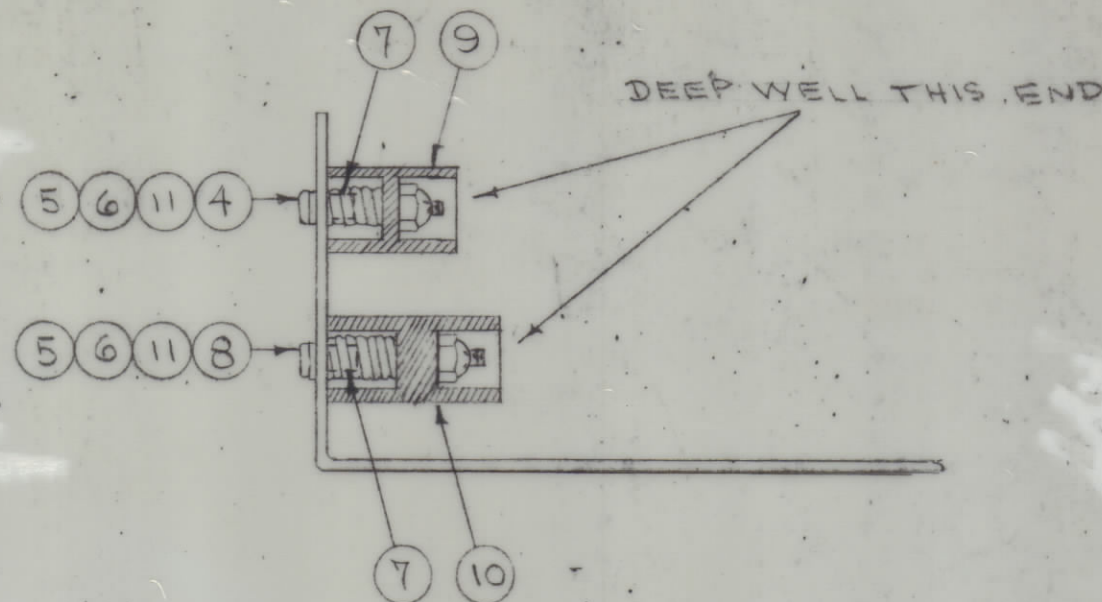
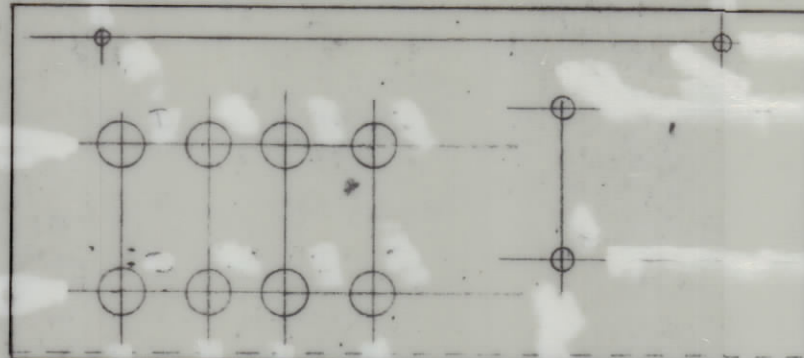
MAXIMUM ALLOWABLE TOLERANCES HAVE BEEN DETERMINED AND DEVIATIONS WILL BE CAUSE FOR REJECTION. REMOVE ALL BURRS AND SHARP EDGES

NOTICE TO PERSONS RECEIVING THIS DRAWING

THE TECHNICAL MATERIEL CORPORATION claims proprietary right in the material disclosed herein. This drawing is issued in confidence for engineering information only and may not be reproduced or used to manufacture anything shown herein without permission from THE TECHNICAL MATERIEL CORPORATION to the user. This drawing is loaned for mutual assistance and is subject to recall at any time.

Property of:

THE TECHNICAL MATERIEL CORPORATION  
MAMARONECK, NEW YORK



A-862 B

REQ. ITEM	PART NO.	DESCRIPTION	SYMBOL
2	11	LWE06HRN	WASHER, LOCK
1	10	PX-241	CLAMP, RELAY
1	9	PX-242	" , CONDENSER
1	8	SC8P0632BN2A	SCREW, MACHINE
2	7	TE-135-1	SPACER, THREADED
2	6	SP-116N	SPRING
2	5	SM-127-D-632	NUT, LOCK
1	4	SC8P0632BN14	SCREW, MACHINE
7	3	FS-109-3	RING, RETAINING
7	2	FS-110-1	STUD, SLOTTED HEAD
1	1	MS 552	COVER, RIGHT

THE TECHNICAL MATERIEL CORP. MAMARONECK, NEW YORK			
COVER, RIGHT SIDE			
PMO			
STOCK SIZE	C.D.D. 8/5/54		
MATERIAL	WEIGHT PER PC.	TYPE & TEMPER	DRAWN
			ELEC. DES. APP.
		HEAT TREAT. SPEC.	MECH. DES. APP.
		FINISH & SPEC. NO.	FINAL APPROVAL

1	PMO-2	285	8-5-54
1	PMO-1	285	8-5-54
REQ PER UNIT	MODEL	PROJECT NO.	ASS'Y. NO.
			DATE
	USED ON		

B	N ADD. IT 6 PT/No	9,206	16857	WFO	WFO	WFO
A	FINISH WAS 5101-CAUSTIC DIP NOW UP DATED & STANDARDIZED	8,276	8099	WFO	WFO	WFO
ISSUE ITEM	CHANGED FROM	DATE	CN. NO.	DRAFTS	CHECKER	ENG. APP.
TOLERANCES		SCALE:				
ALL OTHERS	DEC. DIM. ± FRAC. DIM. ± 1/64 ANGULAR DIM. ±	DRILL PUNCH, COMMERCIAL STOCK SIZES AND MANUFACTURERS TOLERANCES ARE NOT INCLUDED.				

A 862 B