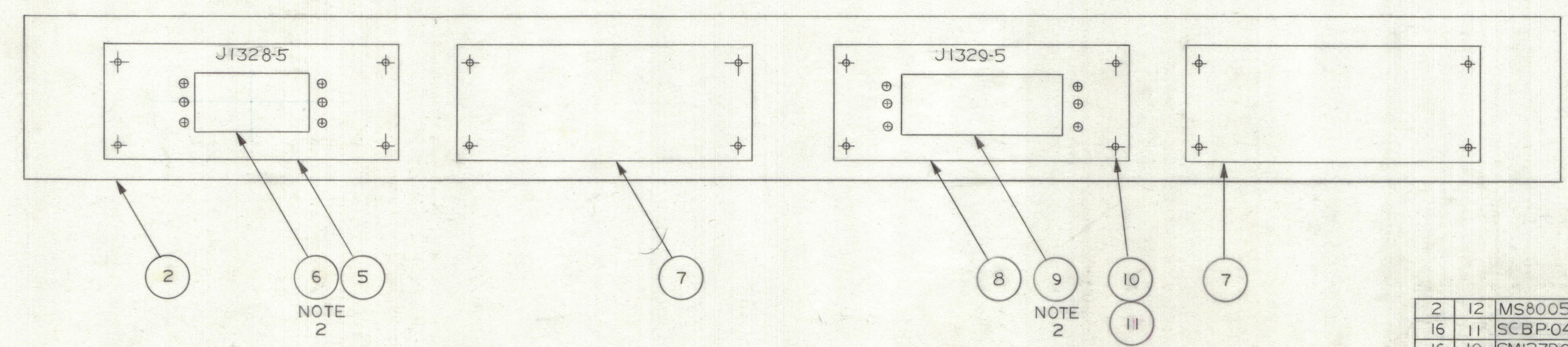
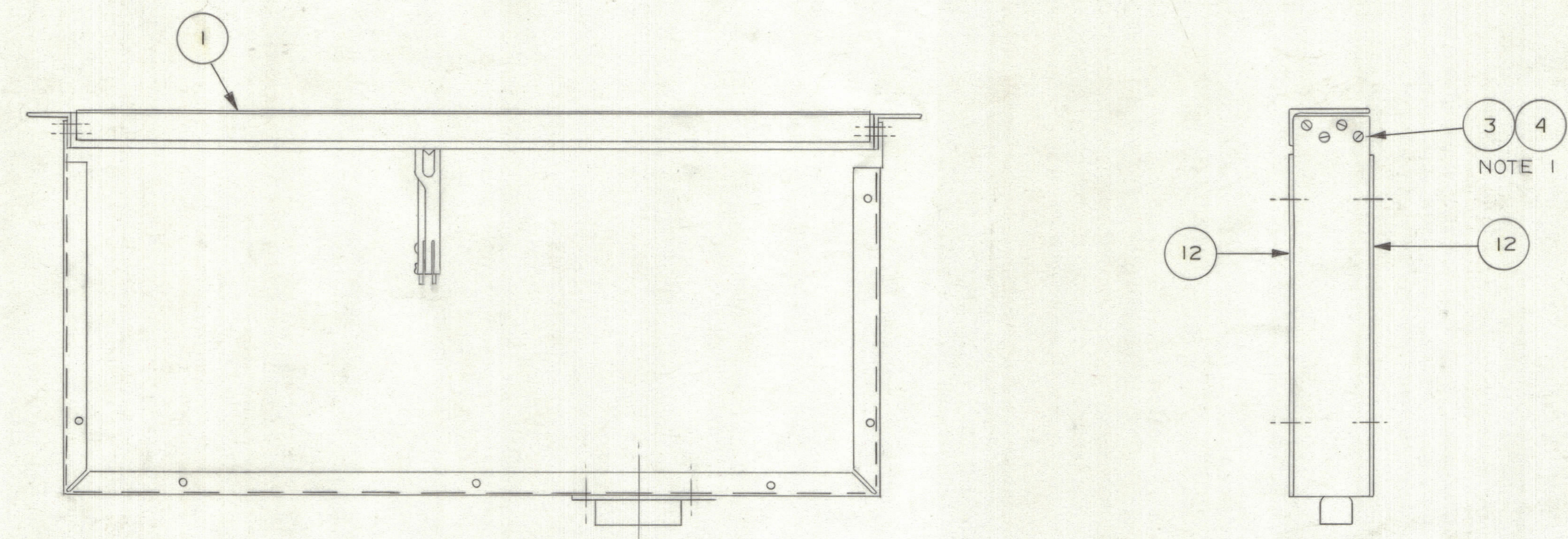


ZONE		LTR		DESCRIPTION		REVISIONS		DATE	E.M.N.NO	DRAFT	CHKD	APPD



REAR VIEW

- NOTES:
- USE (3) (4) INSTEAD OF SUPPLIED HARDWARE
  - MOUNT CONN. TO ADAPTER PLATES WITH HARDWARE SUPPLIED WITH CONN. (MALE GUIDE PIN TO "A" OR NO. 1)

QTY. REQ.	ITEM	PART NO.	DESCRIPTION	SYMBOL
2	12	MS8005-1	COVER TOP & BTM	
16	11	SCBP-0440-BN5	MACH SCREW	
16	10	SMI27D0440	STOP NUT	
1	9	JJ333-50-S-FS2	50 PIN FEMALE CONN. INNER SHIELD	
1	8	LD8042-2	ADAPTER PLATE 50 PIN	
2	7	MS8079-1	ADAPTER PLATE - BLANK	
1	6	JJ333-34-S-FS2	34 PIN FEMALE CONN INNER SHIELD	
1	5	LD8042-1	ADAPTER PLATE 34 PIN	
8	4	LWE06MRN	EXT LOCKWASHER	
8	3	SCBP0632BN5	FLAT HEAD MACH SCREW	
1	2	MS8004	WRAPAROUND	
1	1	A 8027	JACK FIELD	

LIST OF MATERIAL

FINAL APPROVAL	DATE
<i>SM</i>	2-20-68
MECH. DES.	DATE
<i>Frank Donnell</i>	1-29-68
ELECT. DES.	DATE
CHECKED	DATE
<i>Frank Donnell</i>	2-2-68
DRAWN	DATE
<i>S. Bishop</i>	2-1-68

THE TECHNICAL MATERIEL CORP.  
MAMARONECK, NEW YORK

JACK PNL WRAPAROUND ASSY  
AJP-5 UNIT 13

QTY / UNIT	MODEL USED ON	ASS'Y NO.
1	13	
APPLICATION		
	CODE	
NOTICE TO PERSONS RECEIVING THIS DRAWING		
THE TECHNICAL MATERIEL CORPORATION claims proprietary right in the material disclosed hereon. This drawing is issued in confidence for engineering information only and may not be reproduced or used to manufacture anything shown hereon without permission from THE TECHNICAL MATERIEL CORPORATION to the user. This drawing is loaned for mutual assistance and is subject to recall at any time.		

UNLESS OTHERWISE SPECIFIED DIMENSIONS ARE IN INCHES AND INCLUDE CHEMICALLY APPLIED OR PLATED FINISHES	
TOLERANCES ON	
DECIMALS	FRACTIONS
.X ± .05	± 1/64
.XX ± .01	ANGLES ± 0° -30'
.XXX ± .005	
MATERIAL	
FINISH	

SIZE	CODE IDENT. NO.	DWG NO.	ISSUE
D	82679	A 8028	φ
SCALE		SHEET	OF