

4

3

2

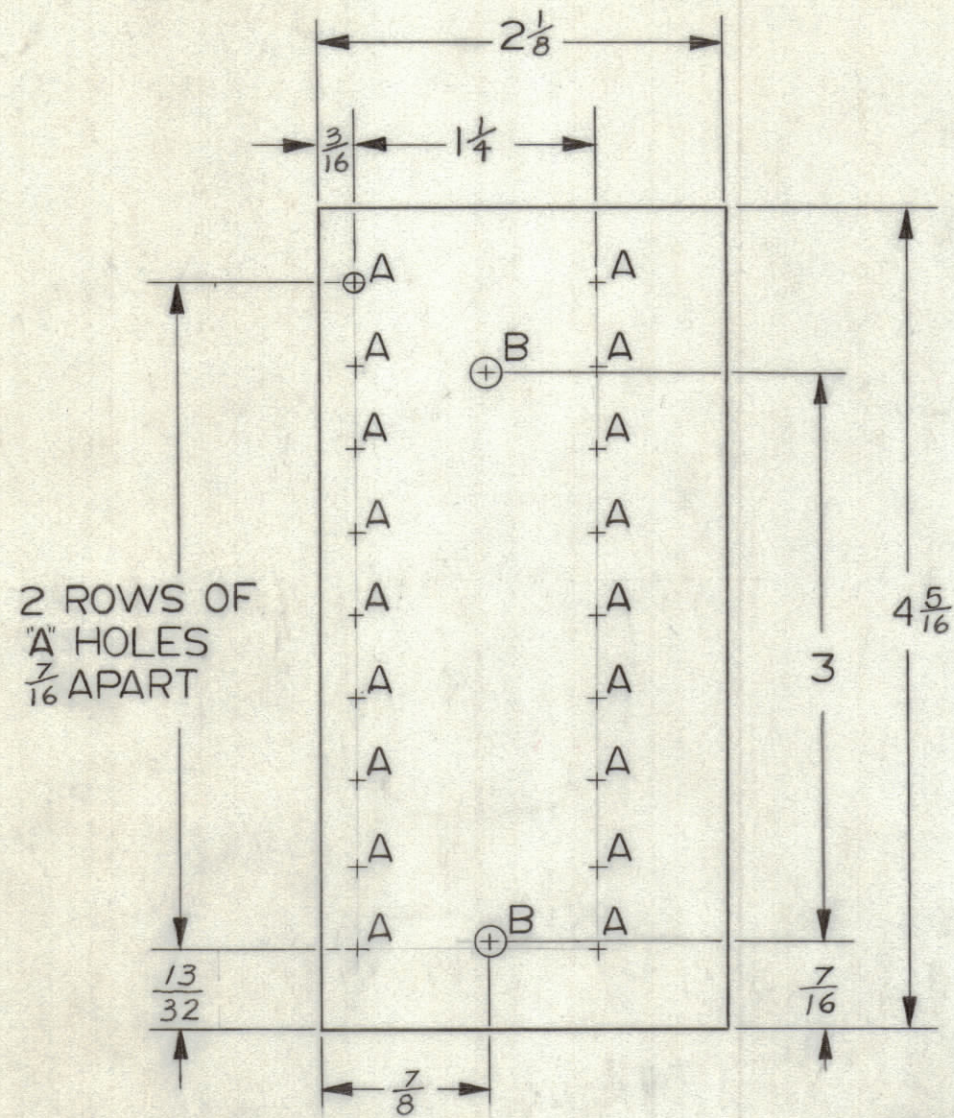
1

### MACHINING

### MARKING

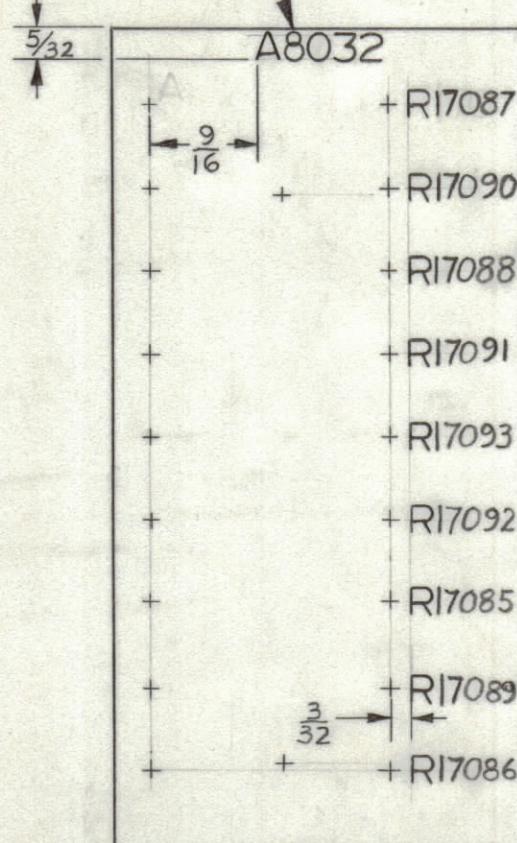
### SUB ASSY

| REVISIONS |     |             |      |          |       |      |
|-----------|-----|-------------|------|----------|-------|------|
| ZONE      | LTR | DESCRIPTION | DATE | E.M.N.NO | DRAFT | CHKD |
|           |     |             |      |          |       |      |



HOLES:  
 'A' .112 DIA. (18 REQ)  
 'B' .189 DIA. (2 REQ)  
 MAT'L  $\frac{3}{32}$  THICK GIO EPOXY A8032-1

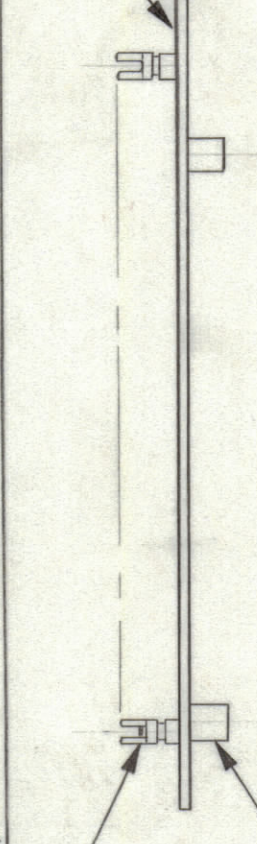
MARK TMC P/N  
 $\frac{3}{32}$  HIGH GOTHIC  
 WITH LATEST REV. ENTER  
 LETTER



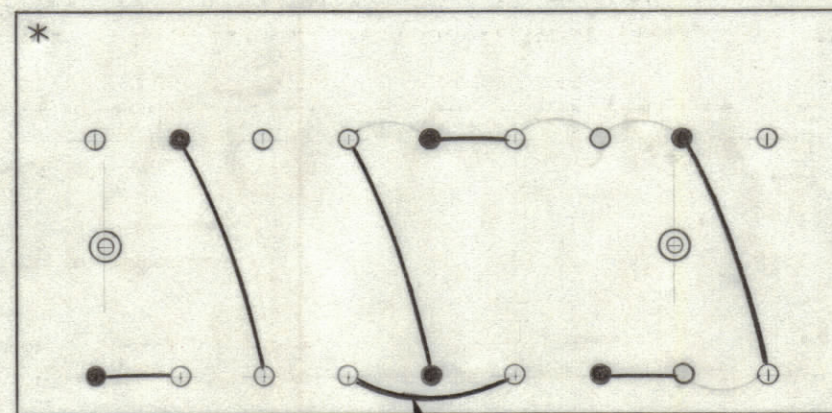
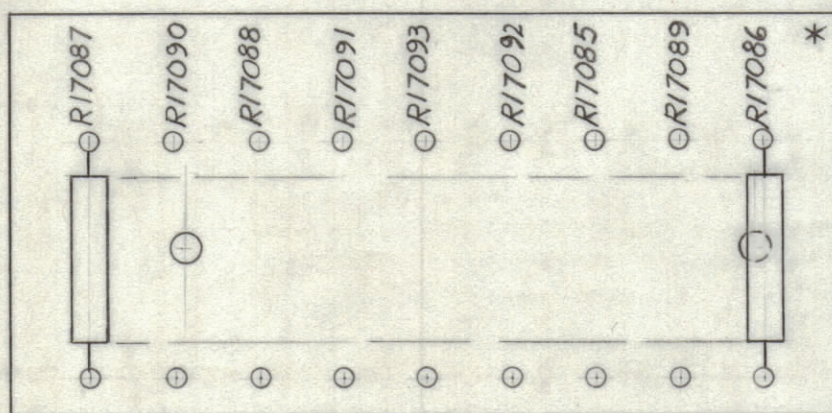
FUNGUS PROOF: AS PER TMC SPEC S113. MARKING PROCESS AS PER TMC SPEC S727. MARKING  $\frac{1}{8}$  HIGH BLACK GOTHIC.

A8032-2

LETTERING ON THIS SIDE



① MOUNT IN ALL 'A' HOLES  
 ② MOUNT IN ALL 'B' HOLES  
 A8032-3



• SOLDER

A8032-4  
FINAL ASSY

| QTY. REQ. | ITEM | PART NO.    | DESCRIPTION          | SYMBOL           |
|-----------|------|-------------|----------------------|------------------|
| 2         | 10   | RC32GF820J  | RESISTOR, FXD, COMP  | R17087<br>R17088 |
| X         | 9    | BS100       | SOLDER, TIN ALLOY    |                  |
| 2         | 8    | RC32GF510J  | RES, FXD, COMP       | R17089<br>R17090 |
| 2         | 7    | RC32GF331J  | " " "                | R17085<br>R17086 |
| 1         | 6    | RC20GF821J  | " " "                | R17093           |
| 2         | 5    | RC20GF102J  | " " "                | R17091<br>R17092 |
| X         | 4    | PX104-1-034 | INS, SLVG, ELEC      |                  |
| X         | 3    | WL100-7     | WIRE, ELEC, BUSS #22 |                  |
| 2         | 2    | TE108-2     | NUT, PLN, CINCH      | B                |
| 18        | 1    | TE109-2     | TERM., STUD          | A                |

| LIST OF MATERIAL |  |  |  |  |
|------------------|--|--|--|--|
| Ben Nap.         |  |  |  |  |

|   |           |                |         |
|---|-----------|----------------|---------|
| UNLESS OTHERWISE SPECIFIED DIMENSIONS ARE IN INCHES AND INCLUDE CHEMICALLY APPLIED OR PLATED FINISHES |           | FINAL APPROVAL | DATE    |
| TOLERANCES ON   |           | MECH. DES.     | DATE    |
| DECIMALS  | FRACTIONS | ELECT. DES.    | DATE    |
| .X ± .05  | ± 1/64    | CHECKED        | DATE    |
| .XX ± .01   | ANGLES    | DRAWN          | DATE    |
| .XXX ± .005   | ± 0° -30' | C. Grob        | 2/15/68 |

THE TECHNICAL MATERIEL CORP.  
 MAMARONECK, NEW YORK

## RESISTOR BOARD, ASSY.

| QTY / UNIT | TCRM-1 | MODEL USED ON | ASS'Y NO. |
|------------|--------|---------------|-----------|
|            |        |               |           |

NOTICE TO PERSONS RECEIVING THIS DRAWING  
 THE TECHNICAL MATERIEL CORPORATION claims proprietary right in the material disclosed hereon. This drawing is issued in confidence for engineering information only and may not be reproduced or used to manufacture anything shown hereon without permission from THE TECHNICAL MATERIEL CORPORATION to the user. This drawing is loaned for mutual assistance and is subject to recall at any time.

|       |                 |         |              |
|-------|-----------------|---------|--------------|
| SIZE  | CODE IDENT. NO. | DWG NO. | ISSUE        |
| C     | 82679           | A8032   | ∅            |
| SCALE |                 |         | SHEET 1 OF 1 |

4

3

2

1