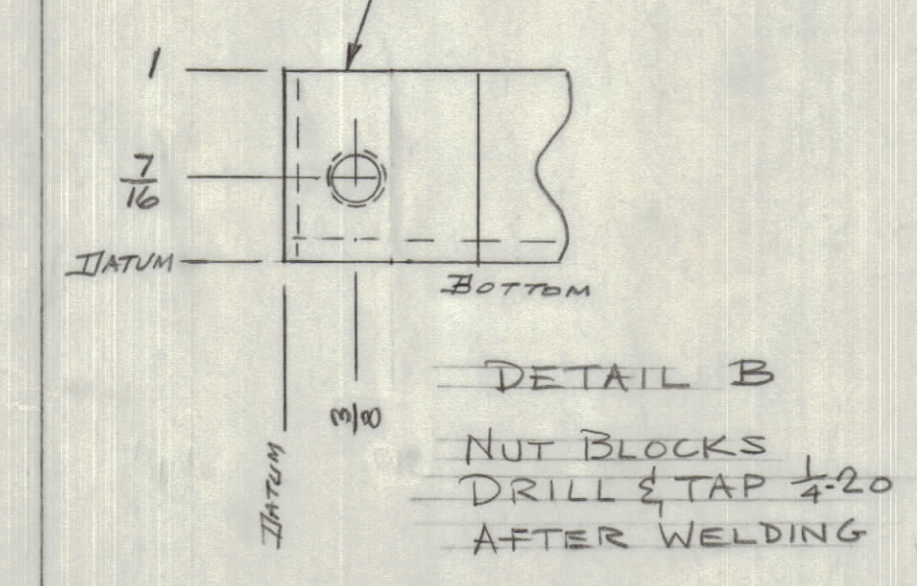
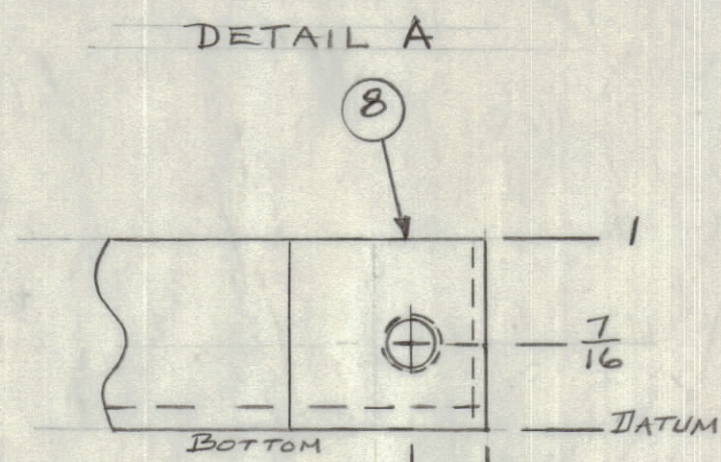


REVISIONS							
ZONE	LTR	DESCRIPTION	DATE	E.M.N.NO	DRAFT	CHKD	APPD
A		GENERAL REVISIONS	2-29-68			JFP	JFP
X		40N12D7191 Dwg. No.	2-12-68		C. S. 808		
Ø		ORIGINAL RELEASE FOR PRODUCTION	8/25/69		CB		MS
A		CHG OPENING DISTANCE TO 17 5/16	10/6/70	19993	GE	W	MS
B		DELE. 2 HOLES, CHG. DETAIL A & B	6-23/71	20398	RF	W	PEL



REQD.	PART NO.	ITEM	DESCRIPTION	MATL. OR MFR.	MATL. SPEC. OR CAT. NO.	CKT. SYM.
11	NT1291032-6	10	CAPTIVE FASTENER	PENN CO	FE 308	
1	MS8361	9	CONNECTOR BRACKET	MULTE.		
4	MS8353-4	8	ANGLE STRIP	MULTE.		
1	MS8359-3	7	RESISTOR SUP ANGLE	MULTE.		
1	MS8359-2	6	TRANSFORMER SUP ANGLE	MULTE.		
1	MS8359-1	5	CONTACTOR SUP ANGLE	MULTE.		
1	MS8362-4	4	RIGHT BASE ANGLE	MULTE.		
1	MS8362-3	3	LEFT BASE ANGLE	MULTE.		
1	MS8362-2	2	REAR BASE ANGLE	MULTE.		
1	MS8362-1	1	FRONT BASE ANGLE	MULTE.		

QTY / UNIT	MODEL USED ON	ASS'Y NO.
1	SPT-3KVHF	AX8058

CODE	MATERIAL	FINISH

FINAL APPROVAL	DATE
JFP	7-11-68
MECH. DES. CMMc	DATE 1-19-68
ELECT. DES. JFP	DATE 8-13-69
CHECKED JFP	DATE 1-20-68
DRAWN CB	DATE 1-19-68

THE TECHNICAL MATERIEL CORP. MAMARONECK, NEW YORK			
PLATE CONTROL BASE ASSEMBLY			
SIZE	CODE IDENT. NO.	DWG NO.	ISSUE
D	82679	A8062	B

NOTICE TO PERSONS RECEIVING THIS DRAWING  
 THE TECHNICAL MATERIEL CORPORATION claims proprietary right in the material disclosed herein. This drawing is issued in confidence for engineering information only and may not be reproduced or used to manufacture anything shown hereon without permission from THE TECHNICAL MATERIEL CORPORATION to the user. This drawing is loaned for mutual assistance and is subject to recall at any time.