

4

3

2

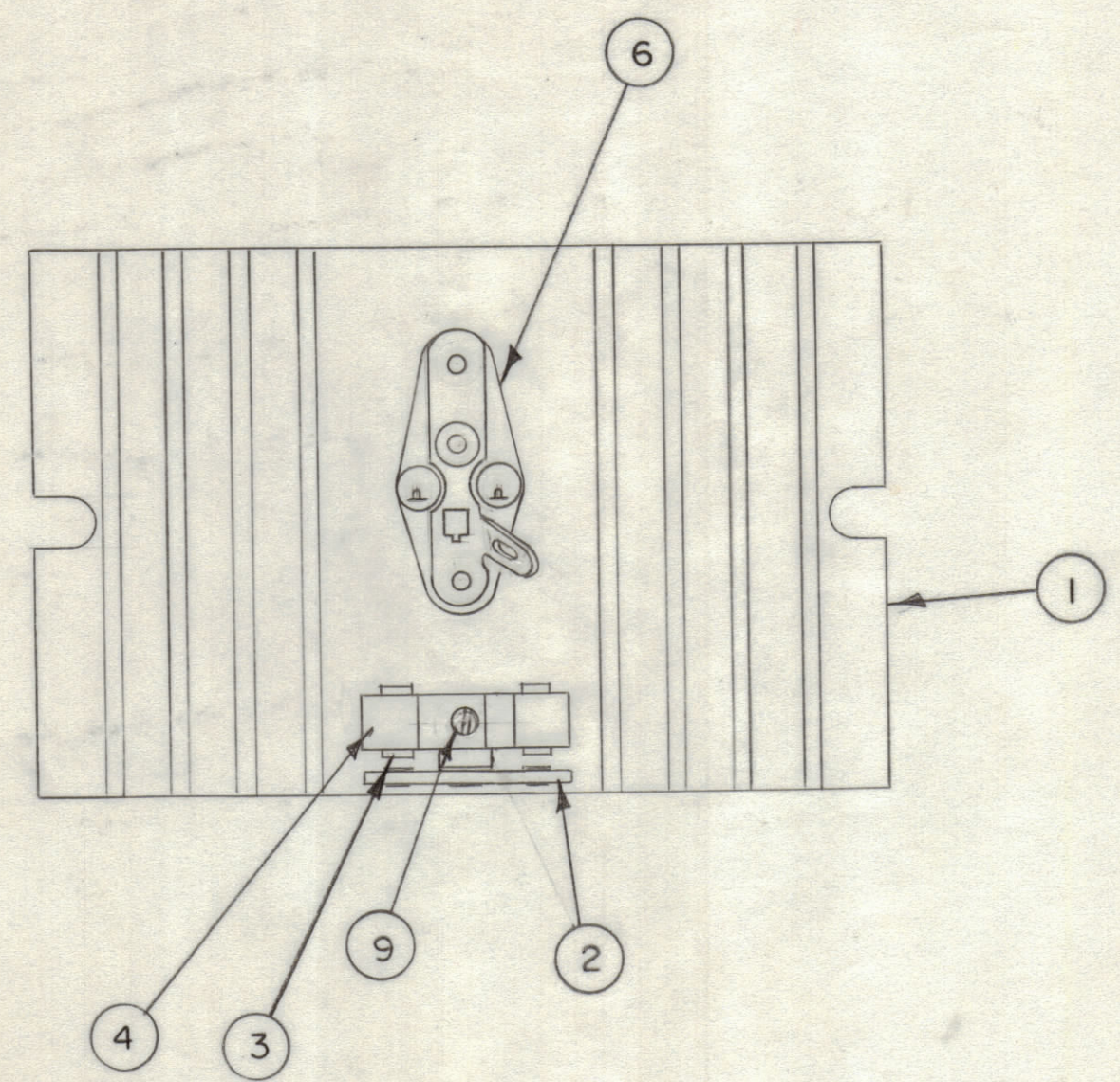
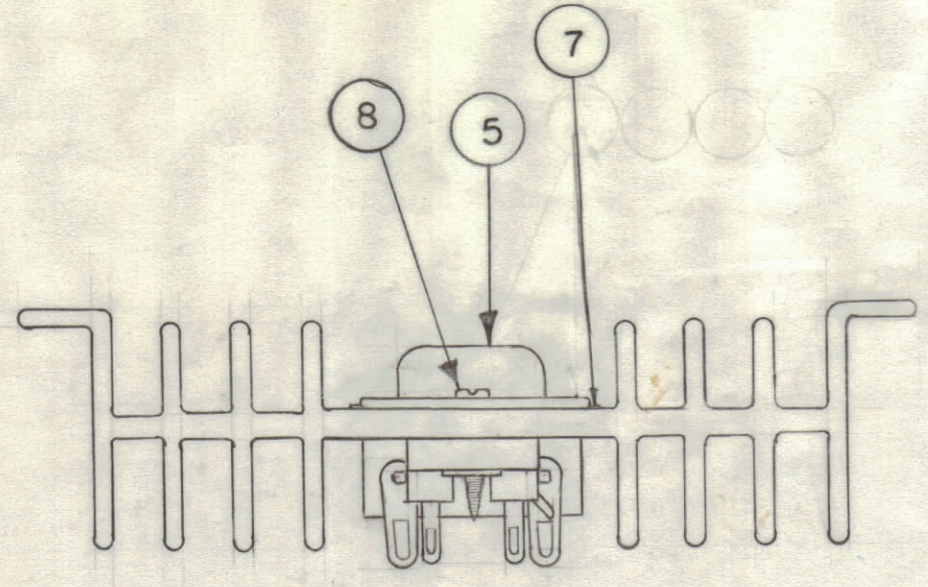
1

REVISIONS						
ZONE	LTR	DESCRIPTION	DATE	E.M.N.NO	DRAFT	CHKD APPD
	X	DWG. No. WAS 40N12C7133	2-20-68		C. G. ROSS	
	Ø	ORIGINAL RELEASE FOR PRODUCTION	8/25/69		CG	JL

SCHEDULE A

ASSY NO.	QTY USED PER ASSY	
	ITEM 3	ITEM 4
40A-8079-1	1	1
40A-8079-2	2	2

NOTE: QTYS FOR ITEMS 1,2,5,6,7,8,9 IN LOM ARE FOR EACH ASSY AS LISTED IN SCHEDULE A.



QTY. REQ.	ITEM	PART NO.	DESCRIPTION	SYMBOL
1	9	SCBPO632BNG	SCREW, MACHINE 5/16", NPS	
2	8	SCBPO632BNG	SCREW, MACHINE 5/16", NPS	
1	7	IM226-2M	MICA INSULATOR	
1	6	TS166-2P	SOCKET	
1	5	40411	TRANSISTOR RCA	
SEE SCHEDULE A	4	MS833205	CLIP, DIODE	
SEE SCHEDULE A	3	IN3754	DIODE RCA	
1	2	TM117-10	TERM STRIP H.H. SMITH	
1	1	MS838631	HEATSINK WAKEFIELD	

A-8079-2	2		AX8067-2
40A-8079-1	4		AX8067-2
40A-8079-2	2		AX8067-1
40A-8079-1	4		AX8067-1
QTY / UNIT		MODEL USED ON	ASS'Y NO.
		BIAS CONTROL SPT-3KVHF AM MODULATOR	
APPLICATION A8053, A8061			
		CODE	
NOTICE TO PERSONS RECEIVING THIS DRAWING			
THE TECHNICAL MATERIEL CORPORATION claims proprietary right in the material disclosed hereon. This drawing is issued in confidence for engineering information only and may not be reproduced or used to manufacture anything shown hereon without permission from THE TECHNICAL MATERIEL CORPORATION to the user. This drawing is loaned for mutual assistance and is subject to recall at any time.			

UNLESS OTHERWISE SPECIFIED DIMENSIONS ARE IN INCHES AND INCLUDE CHEMICALLY APPLIED OR PLATED FINISHES

TOLERANCES ON

DECIMALS	FRACTIONS
.X ± .05	± 1/64
.XX ± .01	ANGLES
.XXX ± .005	± 0° -30'

FINAL APPROVAL	DATE
J.F.P.	5-9-68
MECH. DES.	DATE
J.M.M.	2-10-68
ELECT. DES.	DATE
	8-13-69
CHECKED	DATE
R. Smith	5-9-68
DRAWN	DATE
L. McD	5-1-68

LIST OF MATERIAL			
THE TECHNICAL MATERIEL CORP. MAMARONECK, NEW YORK			
ASSEMBLY HEAT SINK AM MODULATOR			
SIZE	CODE IDENT.NO.	DWG. NO.	ISSUE
C	82679	A-8079	Ø
SCALE 1:1			SHEET 1 OF 1

D

D

C

C

B

B

A

A

4

3

2

1