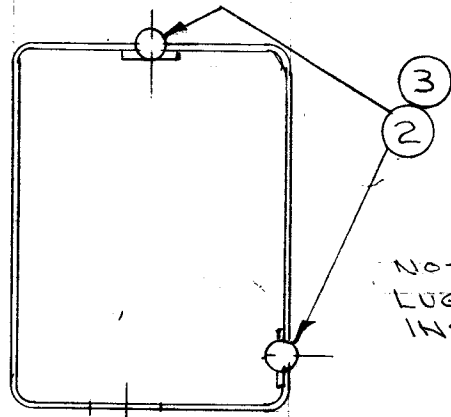
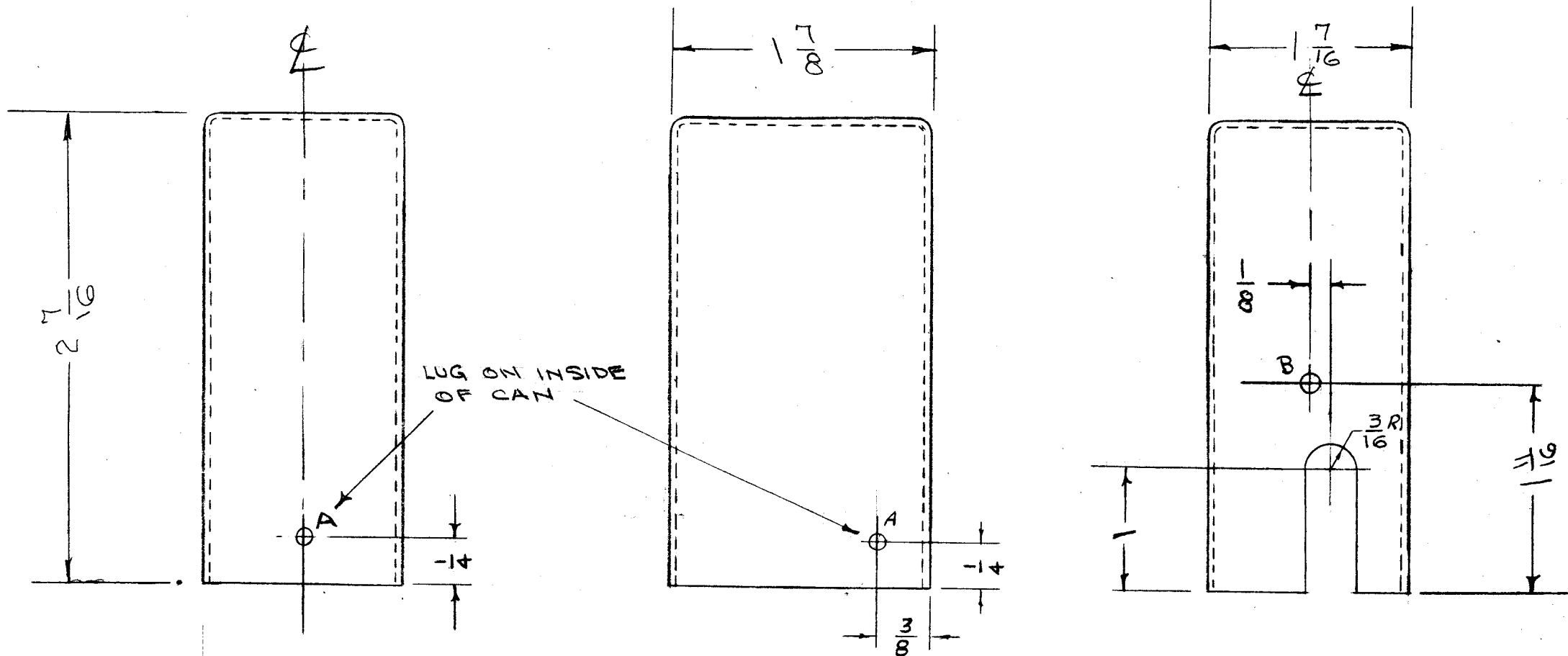


IF IT IS FOUND DESIRABLE TO CHANGE ANY TOLERANCE OR OTHER DETAIL SPECIFIED ON THIS DRAWING NOTIFY THE PURCHASER PROMPTLY.

MAXIMUM ALLOWABLE TOLERANCES HAVE BEEN DETERMINED AND DEVIATIONS WILL BE CAUSE FOR REJECTION. REMOVE ALL BURRS AND SHARP EDGES

A - $\frac{1}{8}$ (.125) D. 2 HOLES REQ.
 B - $\frac{5}{32}$ (.156) D. 1 " "

A-907 K



NOTE:
LUGS TO BE MOUNTED INSIDE CAN.

ISSUE	ITEM	CHANGED FROM	DATE	CN. NO.	DRAFTS	CHECKER	ENG. APP.
K	1	ITEMS (2 & 3) QTY WAS (1)	8-19-63	9760	AK	AK	AK
J	2	2 "V" NOTCHES DELETED	5-13-57	9	SC	AK	AK
H	1	9/32 WAS 1/4	4-24-57	8	SC	AK	AK
G	1	3/16 R. WAS 7/32 R.	7-27-56	7	AK	AK	AK
F	2	ASSY. CLARIFIED	1-30-56	6	AK	AK	AK
E	1	1/32 R. WAS 3/16 R.	1-4-56	5	AK	AK	AK
D	2	NOTCH & 'A' HOLE ADDED	9-30-55	4	AK	AK	AK
C	1	1-A HOLE DELETED 9/32 WAS 1/4	4-24-57	3	AK	AK	AK
B	2	CUTOUT WAS 3/8 HOLE	6/11/55	2	AK	AK	AK
A	1	'B' HOLE DELETED	4/11/55	1	AK	AK	AK

REQ. ITEM	PART NO.	DESCRIPTION	SYMBOL
2	3	SC-106-1	SPADE LUG
2	2	EY-100-1	EYELET, FLAT FLANGE
1	1	BX-102-1	CAN (MODIFY AS SHOWN)
THE TECHNICAL MATERIEL CORP. MAMARONECK, NEW YORK			
BFO CAN ASSEMBLY GPR			
STOCK SIZE		DRAWN: G.T.O.	
MATERIAL		ELEC. DES. APP.:	
WEIGHT PER PC.		MECH. DES. APP.:	
TYPE & TEMPER		CHECKED: ###	
HEAT TREAT. SPEC.		FINAL APPROVAL: G.T.O.	
FINISH & SPEC. NO.		A-907 K	

TOLERANCES	SCALE:	DRILL, PUNCH, COMMERCIAL STOCK SIZES AND MANUFACTURERS TOLERANCES ARE NOT INCLUDED.
ALL OTHERS	1	GPR (S/R)
DEC. DIM. ±	297	PROJECT NO.
FRAC. DIM. ± 1/64	A-1043	ASS'Y. NO.
ANGULAR DIM. ±	12-22-54	DATE