

IF IT IS FOUND DESIRABLE TO CHANGE ANY TOLERANCE OR OTHER DETAIL SPECIFIED ON THIS DRAWING NOTIFY THE PURCHASER PROMPTLY.

MAXIMUM ALLOWABLE TOLERANCES HAVE BEEN DETERMINED AND DEVIATIONS WILL BE CAUSE FOR REJECTION. REMOVE ALL BURRS AND SHARP EDGES

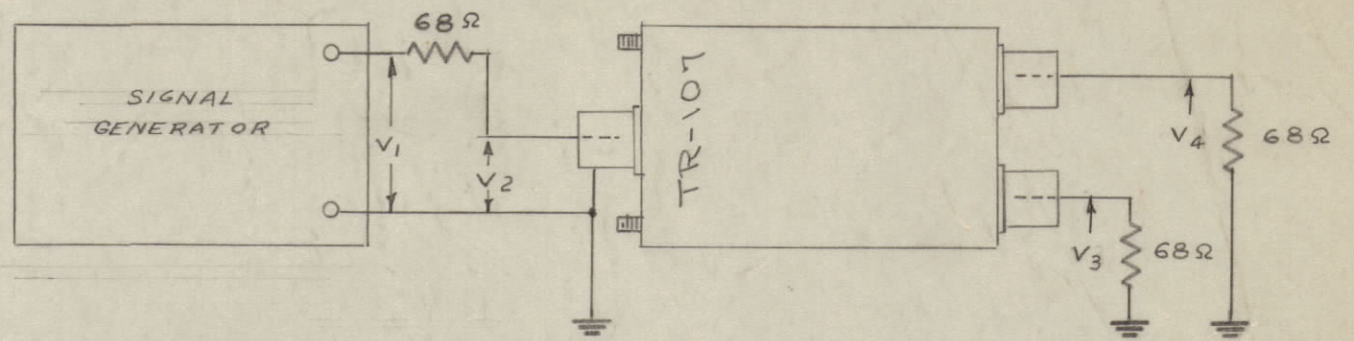
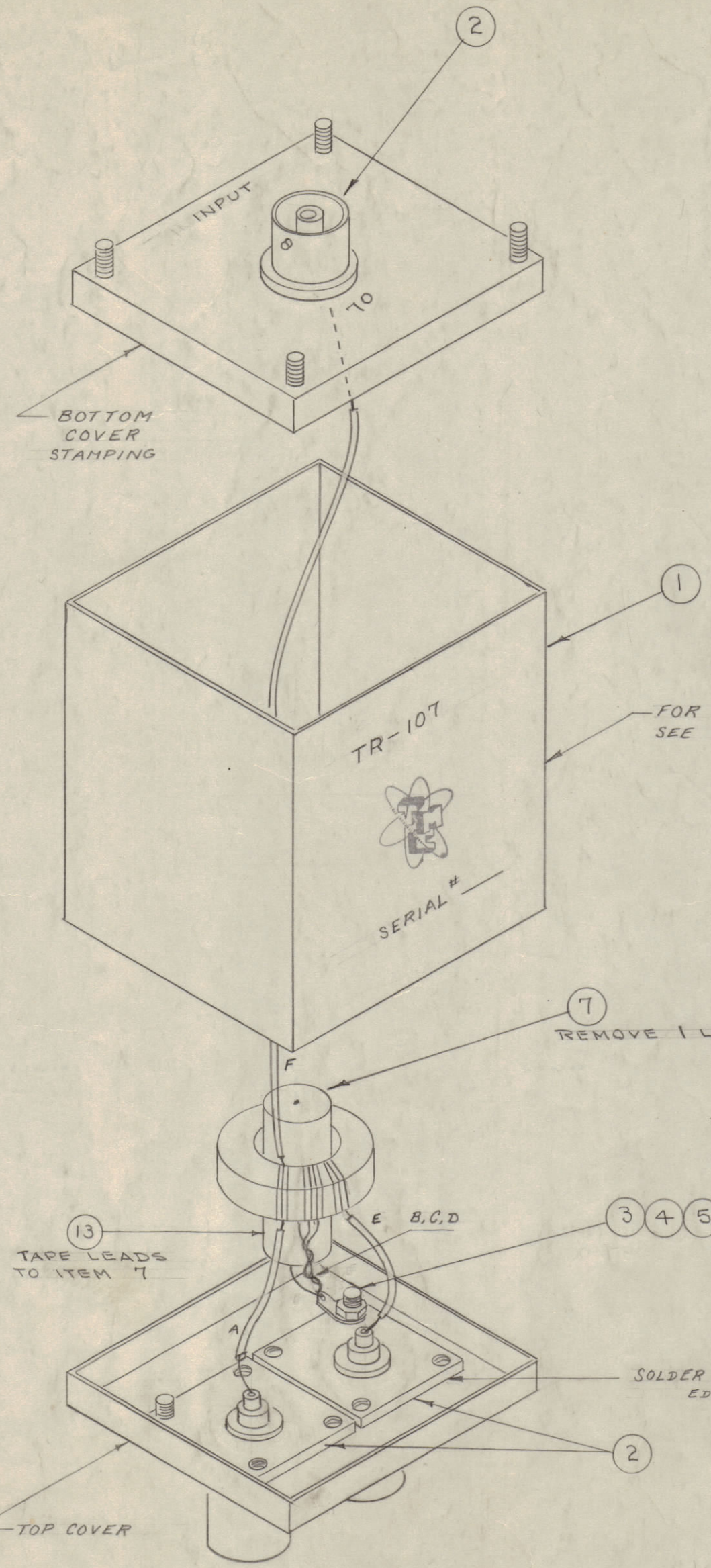
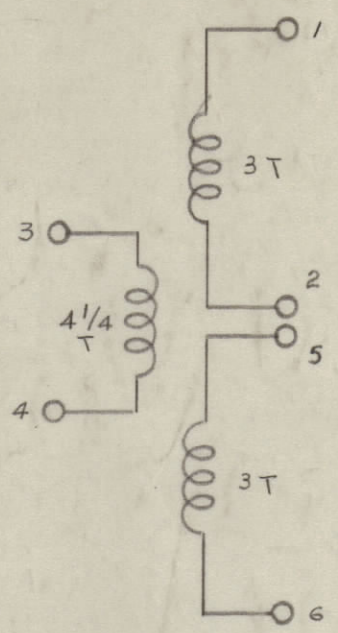
NOTICE TO PERSONS RECEIVING THIS DRAWING

THE TECHNICAL MATERIEL CORPORATION claims proprietary right in the material disclosed hereon. This drawing is issued in confidence or containing information only and may not be reproduced or used to manufacture anything shown hereon without permission from THE TECHNICAL MATERIEL CORPORATION to the user. This drawing is loaned for mutual assistance and is subject to recall at any time.

Property of:  
THE TECHNICAL MATERIEL CORPORATION  
MAMARONECK, NEW YORK

NOT TO BE RELEASED  
W/O AUTHORIZATION

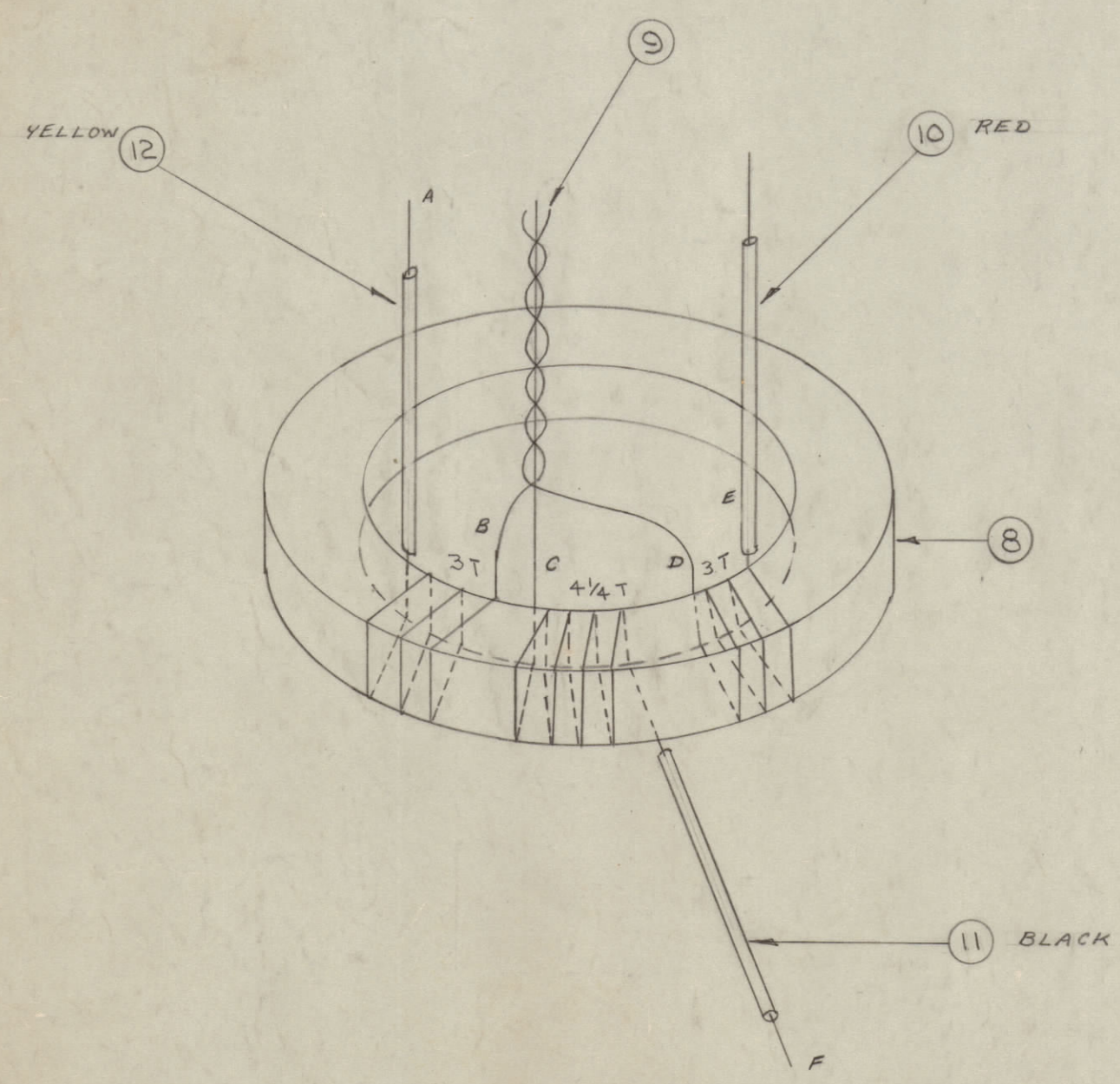
AUTH. BY.....  
DATE:.....



TOLERANCE ± 10%

FMC	V <sub>1</sub>	V <sub>2</sub>	V <sub>3</sub>	V <sub>4</sub>
2	1.0	.56	.32	.32
8	1.0	.56	.32	.32
16	1.0	.56	.32	.32
30	1.0	.60	.30	.30

VTVM



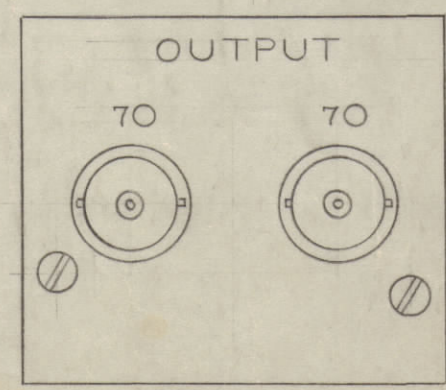
S-114 - ZINC CHROMATE PRIMER  
S-115 - SMOOTH GRAY ENAMEL  
NOTE:  
ALL STAMPING AS SHOWN  
1/8 HIGH BLACK GOTHIC

A-937 B

NOT TO BE RELEASED  
W/O AUTHORIZATION

AUTH. BY.....  
DATE:.....

REQ. ITEM	PART NO.	DESCRIPTION	SYMBOL
X 14	GL-106	COMPOUND, PLASTIC	
X 13	TA-100-1	TAPE	
1/4 12	PX-104-2-.022	INSULATION SLEEVING (YELL.)	
1/4 11	PX-104-1-.022	INSULATION SLEEVING (BL.)	
1/2 10	PX-104-3-.022	INSULATION SLEEVING (RED)	
X 9	WI-102-9-0	MAGNET, WIRE	430
1 8	CJ-104	CORE	
1 7	CN-100-3	CAPACITOR, FIXED	
X 6	BS-100	SOLDER, SOFT	
1 5	NTH0632B1/8	NUT, HEX.	
1 4	TE-104-2	TERMINAL, LOCKING	
2 3	SCBS0632B1/5	SCREW, MACHINE	
3 2	UG-568/U	RECEPTACLES	
1 1	BX-129	CASE TRANSFORMER	



TR-107	PROJECT NO.	ASS'Y. NO.	2-18-55
MODEL	PROJECT NO.	ASS'Y. NO.	DATE

THE TECHNICAL MATERIEL CORP. MAMARONECK, NEW YORK			
ASSEMBLY TR-107			
STOCK SIZE			
MATERIAL	WEIGHT PER PC.		
TYPE & TEMPER	DRAWN	ELEC. DES. APP.	MECH. DES. APP.
HEAT TREAT. SPEC.	CHECKED	FINAL APPROVAL	
FINISH & SPEC. NO.	A-937 B		

B	ON FREQ CHART TOLERANCE	84	14610	FE	QCB	MM
A	REVISED TO V2, V3, V4	1/6/54	10620	RD	QCB	MM
ISSUE ITEM	CHANGED FROM	DATE	CN. NO.	DRAFTS	CHECKER	ENG. APP.
TOLERANCES		SCALE:				
ALL OTHERS	DEC. DIM. ± FRAC. DIM. ± ANGULAR DIM. ±	DRILL, PUNCH, COMMERCIAL STOCK SIZES AND MANUFACTURERS TOLERANCES ARE NOT INCLUDED.				