

IF IT IS FUND DESIRABLE TO CHANGE ANY TOLERANCE OR OTHER DETAIL SPECIFIED ON THIS DRAWING NOTIFY THE PURCHASER PROMPTLY.

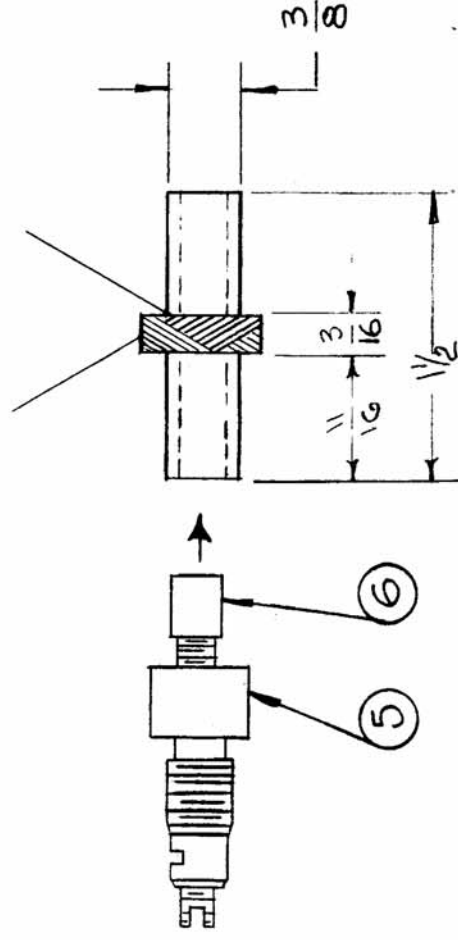
MAXIMUM ALLOWABLE TOLERANCES HAVE BEEN DETERMINED AND DEVIATIONS WILL BE CAUSE FOR REJECTION. REMOVE ALL BURRS AND SHARP EDGES

COIL DATA
 COIL FORM - CF -
 1 PL. 150 TURNS
 WIRE - 5/16 LITZ SNE
 DAB ENDS WITH GL-103
 BAKE FOR 1/2 HOUR AT 215° F.
 COAT WITH Q-MAX
 BAKE FOR 1/2 HOUR AT 215° F.

WINDING DATA
 CAM GEAR 104
 DRIVER " 68
 CAM 187

ELECTRICAL DATA (w/o CORE)
 L - 240 - 260 mH
 Rdc = 4.5 - 5.5 Ω
 F - 790 KC
 Q - 80 OR HIGHER
 LEADS TO BE APPROX. 3" LONG.

NOTE: ASSEMBLE ITEMS 5&6 TO
 COIL FORM AND CEMENT
 WITH ITEM 4 AFTER TESTING.



A-944 D

USED ON
 PROJECT NO. 297
 MODEL GPR
 ASS'Y. NO. A-1037
 DATE 3-2-55

REQ. PER UNIT 1

REQ. ITEM	PART NO.	DESCRIPTION	SYMBOL
1	6	CI-109-5 CORE	
1	5	SM-110 BUSHING	
X	4	GL-103 CEMENT	
X	3	GL-102 Q-MAX	
X	2	WI-104-SAI-SH-QS WIRE, LITZ	
1	1	CF-117-1.5 COIL FORM	

THE TECHNICAL MATERIEL CORP.	
MAMARONECK, NEW YORK	
LOAD COIL, XTAL FILTER	
STOCK SIZE	WEIGHT PER PC.
#	#
MATERIAL	TYPE & TEMPER
	#
HEAT TREAT. SPEC.	FINISH & SPEC. NO.
#	#

ISSUE ITEM	CHANGED FROM	DATE	CN. NO.	DRAFTS	CHECKER	ENG. APP.
D	Items 5&6 Added	6-16-4987		208		
C	Red dot added	5/17/6, 4921			JCH	
B	Rdc Added to Deleted L was 250 mH					A.J.T.
A	WIRE WAS WI-104-A BAKE TEMP. WAS 100°F	7/24/46 10-3-45	1	13	J.V.B.	G.T.O.

TOLERANCES
 DEC. DIM. ±
 FRAC. DIM. ± 1/64
 ANGULAR DIM. ±

DRILL, PUNCH, COMMERCIAL STOCK
 SIZES AND MANUFACTURERS
 TOLERANCES ARE NOT INCLUDED.