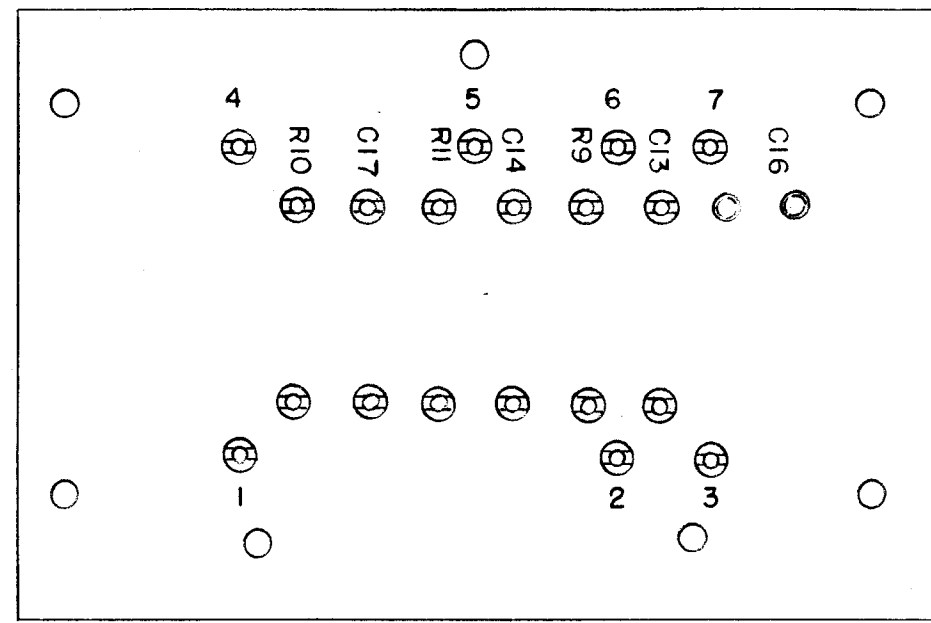
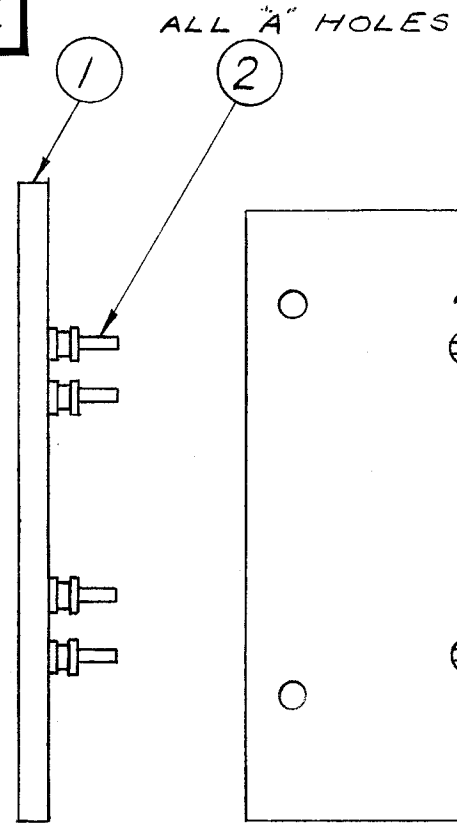
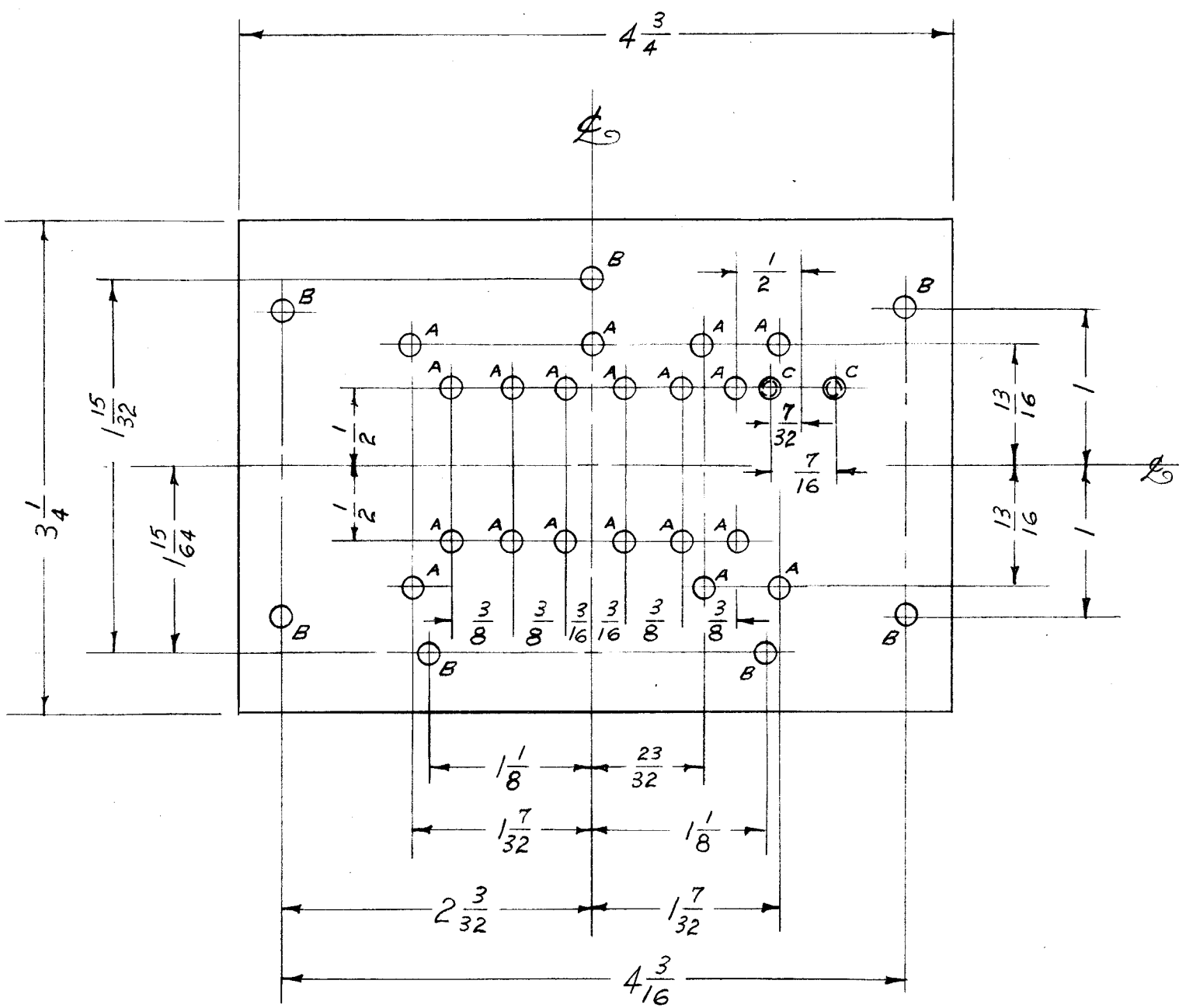


IF IT IS FOUND DESIRABLE TO CHANGE ANY TOLERANCE OR OTHER DETAIL SPECIFIED ON THIS DRAWING NOTIFY THE PURCHASER PROMPTLY.

MAXIMUM ALLOWABLE TOLERANCES HAVE BEEN DETERMINED AND DEVIATIONS WILL BE CAUSE FOR REJECTION. REMOVE ALL BURRS AND SHARP EDGES

A-974

A - 2.9 M.M. (.114) 19 HOLES REQ.
 B - $\frac{9}{64}$ (.140) D. 7 " "
 C - DRILL & TAP FOR 3-48 SCREW 2 " "



MARKING PROCESS: AS PER TMC SPECIFICATION S-727

LETTERING TO BE $\frac{1}{8}$ HIGH BLACK GOTHIC COATED WITH S-113 FUNGUS RESISTANT VARNISH BEFORE LUGS ARE STAKED

19	2	TE-109-3	TERMINAL LUG	
1	1	PX-265	TERMINAL BD. (NO DRAWING)	
REQ.	ITEM	PART NO.	DESCRIPTION	SYMBOL
$\frac{1}{8}$ THK.			THE TECHNICAL MATERIEL CORP.	
STOCK SIZE			MAMARONECK, NEW YORK	
PHENOLIC			TERMINAL BD., 1 MC OVEN	
MATERIAL			SUB ASSY	
WEIGHT PER PC.			F.S.S.	
XXXP LAMINATE			PF 7-25-55 2B	
TYPE & TEMPER			DRAWN	
#			ELEC. DES. APP.	
HEAT TREAT. SPEC.			MECH. DES. APP.	
SEE ABOVE			JAO K2 A.J.J.	
FINISH & SPEC. NO.			CHECKED	
			FINAL APPROVAL	
			A-974	

ISSUE	ITEM	CHANGED FROM	DATE	CN. NO.	DRAFTS	CHECKER	ENG. APP.
TOLERANCES			SCALE:				
ALL OTHERS	DEC. DIM. \pm FRAC. DIM. \pm $\frac{1}{64}$ ANGULAR DIM. \pm		DRILL, PUNCH, COMMERCIAL STOCK SIZES AND MANUFACTURERS TOLERANCES ARE NOT INCLUDED.				

1	FSS			7-25-55
REQ. PER UNIT	MODEL	PROJECT NO.	ASSY. NO.	DATE
USED ON				