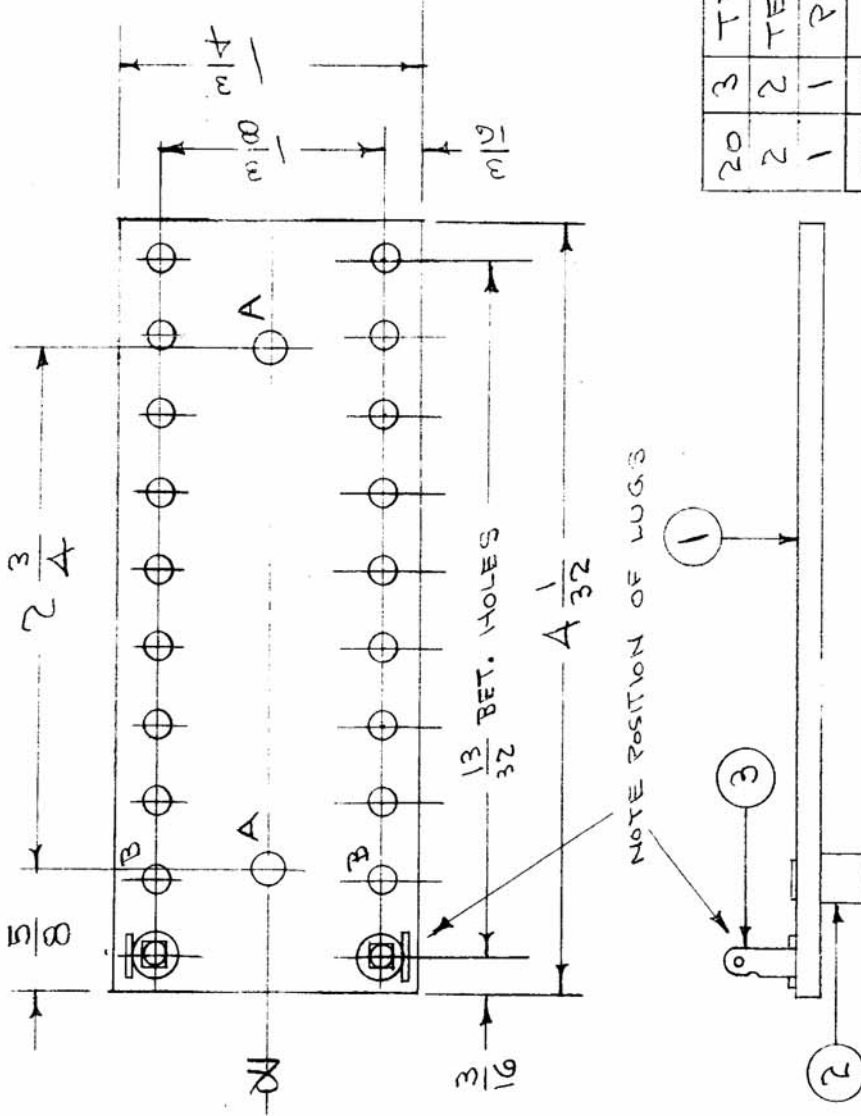


IF IT IS FOUND DESIRABLE TO CHANGE ANY TOLERANCE OR OTHER DETAIL SPECIFIED ON THIS DRAWING NOTIFY THE PURCHASER PROMPTLY.

MAXIMUM ALLOWABLE TOLERANCES HAVE BEEN DETERMINED AND DEVIATIONS WILL BE CAUSE FOR REJECTION. REMOVE ALL BURRS AND SHARP EDGES



NOTE POSITION OF LUGS

ISSUE	ITEM	CHANGED FROM	DATE	CN. NO.	DRAFTS	CHECKER	ENG. APP.
D	2	1/4 WAS 2/8	9/14/58	4	ESB	WDC	
C	1	STAMPING REMOVED	8/14/58	3	ESB	WDC	
B	2	COMPLETE REVISION	6/19/58	2	ESB	WDC	
	1	REDRAWN					

TOLERANCES		SCALE
DEC. DIM. ±	FRAC. DIM. ± 1/64	ANGULAR DIM. ±
DRILL, PUNCH, COMMERCIAL STOCK SIZES AND MANUFACTURERS TOLERANCES ARE NOT INCLUDED.		

REQ. ITEM	PART NO.	DESCRIPTION	SYMBOL
20	3	TE-151	LUG
2	2	TE-108-1	STANDOFF
1	1	PX-272	TERM. BD. (NO DRAWING)

YIG TRK.		STOCK SIZE	
PHENOLIC	—H	MATERIAL	WEIGHT PER PC.
XXX P LAMINATE		TYPE & TEMPER	
		HEAT TREAT. SPEC.	
		NATURAL	
		FINISH & SPEC. NO.	

REQ. PER UNIT	MODEL	PROJECT NO.	USED ON
1	GPR		

ASSY. NO.	DATE
A-1092	6-28-55

A- No. 12 (.189) D. 2 HOLES  
 B- No. 29 (.140) D. 20 "

THE TECHNICAL MATERIEL CORP.	
MAMARONECK.	NEW YORK
TERMINAL BOARD SUB ASSY.	
REAR CHASSIS	G.P.R.
CDD. 6-28-55	P.L.K. 6-28-55
DRAWN	ELEC. DES. APP.
CHECKED	MECH. DES. APP.
FINAL APPROVAL	
A-980 D	