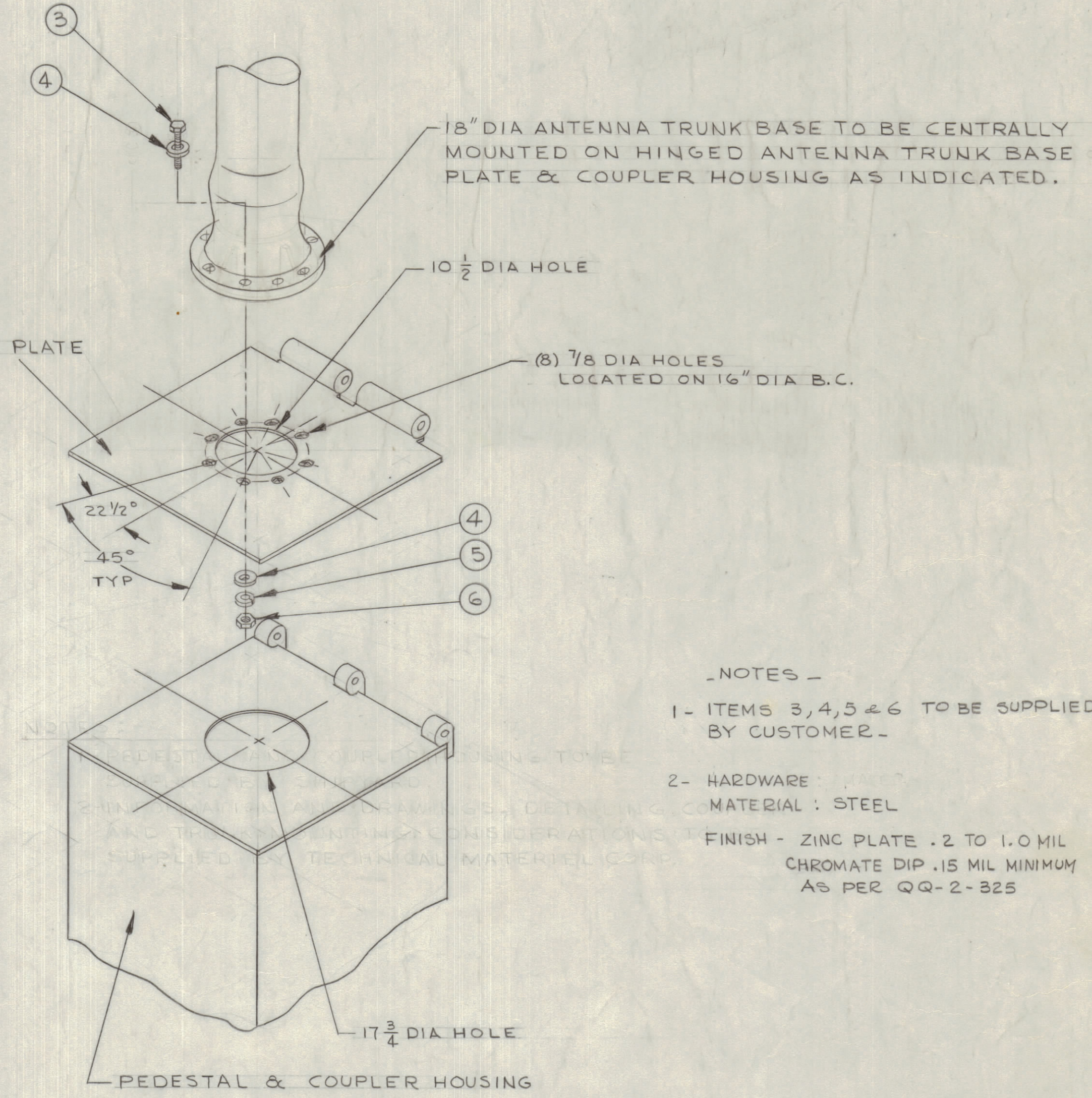
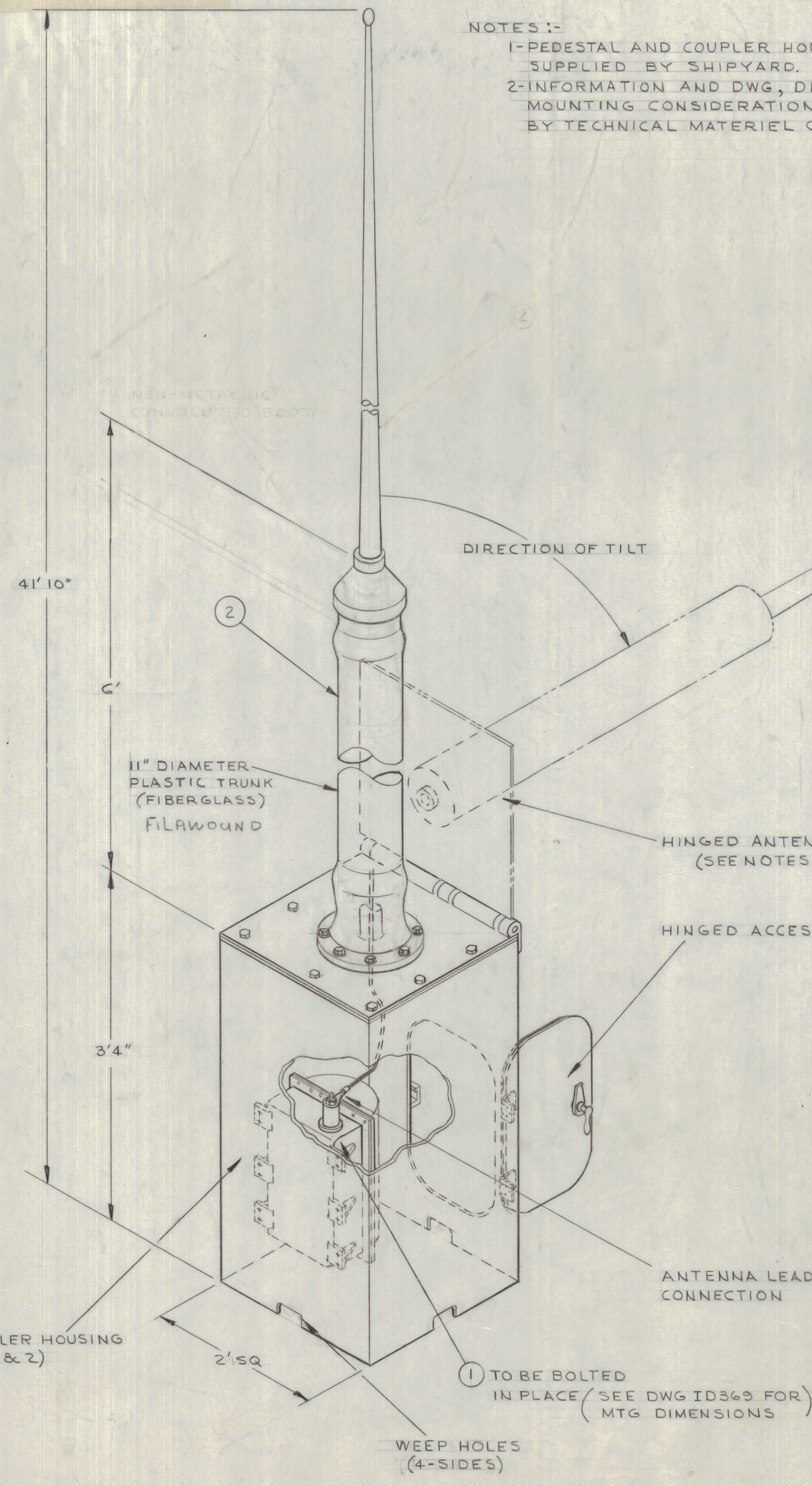


REVISIONS						
ZONE	LTR	DESCRIPTION	DATE	E.M.N.NO	DRAFT	CHKD
X3		COMPLETELY REVISED	9/11/68		JL	
X4		ADDED MTG INFO, REVISED PICT.	9/21/68		JL	
Ø		ORIG. RELEASE FOR PROD.	11/1/68		RQ	

NOTES:-
 1- PEDESTAL AND COUPLER HOUSING TO BE SUPPLIED BY SHIPYARD.
 2- INFORMATION AND DWG, DETAILING COUPLER MOUNTING CONSIDERATIONS TO BE SUPPLIED BY TECHNICAL MATERIEL CORP.



NOTES -
 1- ITEMS 3,4,5 & 6 TO BE SUPPLIED BY CUSTOMER -
 2- HARDWARE MATERIAL : STEEL
 FINISH - ZINC PLATE .2 TO 1.0 MIL CHROMATE DIP .15 MIL MINIMUM AS PER QQ-2-325

ANTENNA TRUNK MTG INFORMATION
 (SEE ABOVE DETAILS)

NOTE:
 ALL DIMENSIONS SHOWN ARE FOR REFERENCE ONLY.

QTY. REQ.	ITEM	PART NO.	DESCRIPTION	SYMBOL
8	6		HEXNUT #3/4-10 NC-2 / STL CP	
8	5		LOCKWASHER #3/4 SPLIT	
16	4		FLATWASHER #3/4 STL CP	
8	3		BOLT, HEX HD #3/4-10 NC-2 X2 1/4 LG STLCP	
1	2	A4746	TRUNK ANTENNA ASSY	
1	1	ID369	ANTENNA COUPLER	

LIST OF MATERIAL
THE TECHNICAL MATERIEL CORP.
 MAMARONECK, NEW YORK
PEDESTAL & ANTENNA TRUNK CONCEPT

FINAL APPROVAL	DATE
<i>EFM</i>	11/1/68
MECH. DES.	DATE
<i>M.ZETENA</i>	4/11/68
ELECT. DES.	DATE
<i>JLD</i>	10/28/68
CHECKED	DATE
<i>JLD</i>	10/28/68
DRAWN	DATE
<i>J. LESHINSKI</i>	4/11/68

1	AWTA-1	
QTY / UNIT	MODEL USED ON	ASS'Y NO.
APPLICATION		
	CODE	
MATERIAL		
FINISH		

NOTICE TO PERSONS RECEIVING THIS DRAWING
 THE TECHNICAL MATERIEL CORPORATION claims proprietary right in the material disclosed herein. This drawing is issued in confidence for engineering information only and may not be reproduced or used to manufacture anything shown herein without permission from THE TECHNICAL MATERIEL CORPORATION to the user. This drawing is loaned for mutual assistance and is subject to recall at any time.

SIZE	CODE IDENT. NO.	DWG NO.	ISSUE
D	82679	AA102	Ø
SCALE		SHEET	OF