

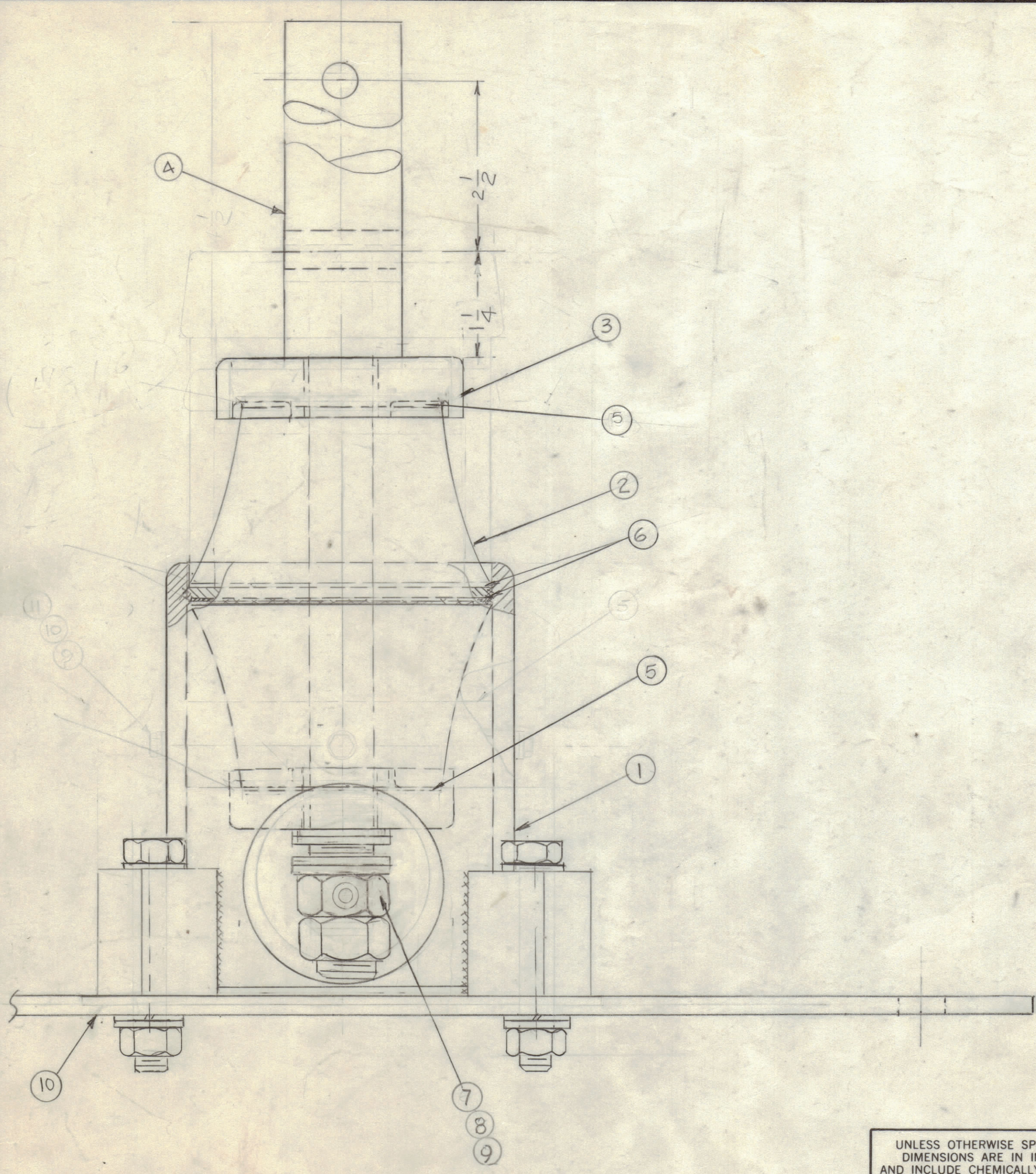
4

3

2

1

REVISIONS						
ZONE	LTR	DESCRIPTION	DATE	E.M.N.NO	DRAFT	CHKD APPD
		ORIGINAL RELEASE FOR PROD.	1-18-88		GDL	
	B	ITEM 2 WAS NS 116 ITEM 5 & 6 WAS GA 135	6-28-90		GDL	



QTY. REQ.	ITEM	PART NO.	DESCRIPTION	SYMBOL
2	16			
2	15			
3	14	SCMH3716 38	SCREW MACHINE	
3	13	LWS37 MSS	LOCK WASHER	
6	12	FW37 HSS	FLAT, WASHED	
3	11	NTH 3716 SH20	NUT, HEX	
1	10	MS 7199	PLATE BASE	
2	9	NTH 750 HSS	NUT, HEX.	
2	8	FW 750 MSS	FLAT WASHER	
2	7	LW 750 HSS	LOCK WASHER	
2	6	GA 138-4	GASKET	
2	5	GA 138-3	GASKET ANTENNA	
1	4	PO 349	POST, ANTENNA	
2	3	PO 350	TOP, INSULATOR ASSY	
2	2	NS 131	INSULATOR ANT. BASE	
1	1	AX 5263	SUB ASSY	

LIST OF MATERIAL				
QTY. REQ.	ITEM	PART NO.	DESCRIPTION	SYMBOL
<p>FINAL APPROVAL: <i>GDL</i> DATE: 1/10/90</p> <p>MECH. DES. DATE</p> <p>ELECT. DES. DATE</p> <p>CHECKED DATE</p> <p>DRAWN: G.D.L. DATE: 8-30-88</p>				
<p><b>THE TECHNICAL MATERIEL CORP.</b> MAMARONECK, NEW YORK</p> <p><b>BASE, ANTENNA</b></p>				
SIZE	CODE IDENT. NO.	DWG NO.	ISSUE	
C	82679	AB 106	B	
SCALE	NONE	SHEET	OF	

1	AA104	
QTY / UNIT	MODEL USED ON	ASS'Y NO.
APPLICATION		
CODE		

UNLESS OTHERWISE SPECIFIED DIMENSIONS ARE IN INCHES AND INCLUDE CHEMICALLY APPLIED OR PLATED FINISHES

TOLERANCES ON

DECIMALS	FRACTIONS
.X ± .05	± 1/64
.XX ± .01	ANGLES
.XXX ± .005	± 0° -30'

MATERIAL

FINISH

NOTICE TO PERSONS RECEIVING THIS DRAWING

THE TECHNICAL MATERIEL CORPORATION claims proprietary right in the material disclosed hereon. This drawing is issued in confidence for engineering information only and may not be reproduced or used to manufacture anything shown hereon without permission from THE TECHNICAL MATERIEL CORPORATION to the user. This drawing is loaned for mutual assistance and is subject to recall at any time.

4

3

2

1