

4

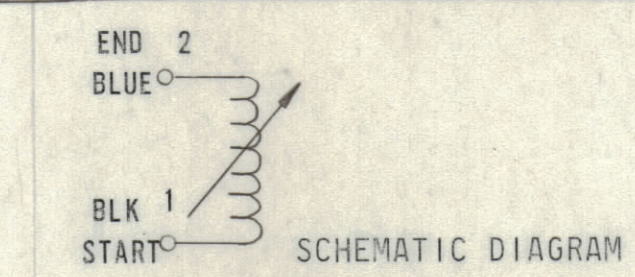
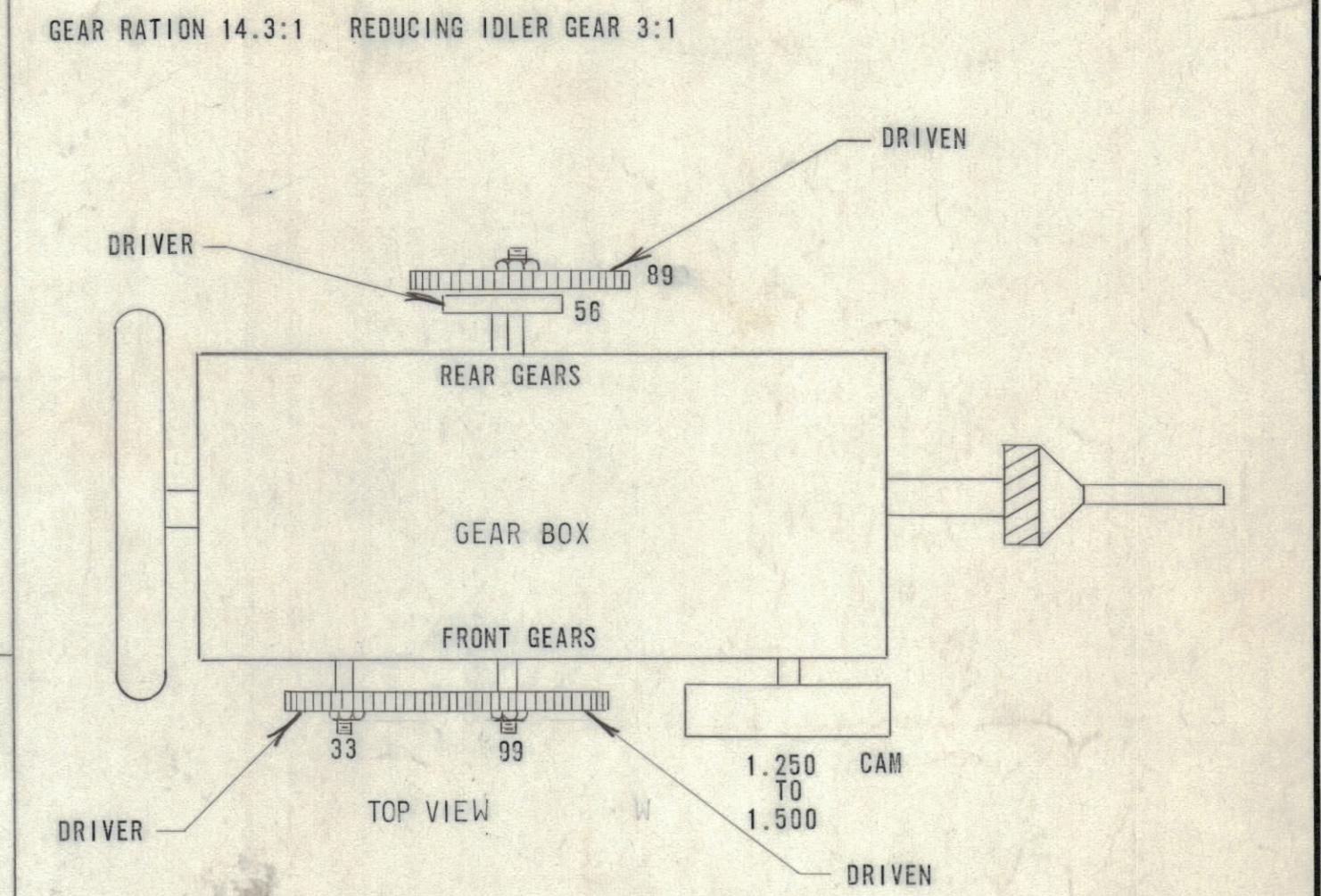
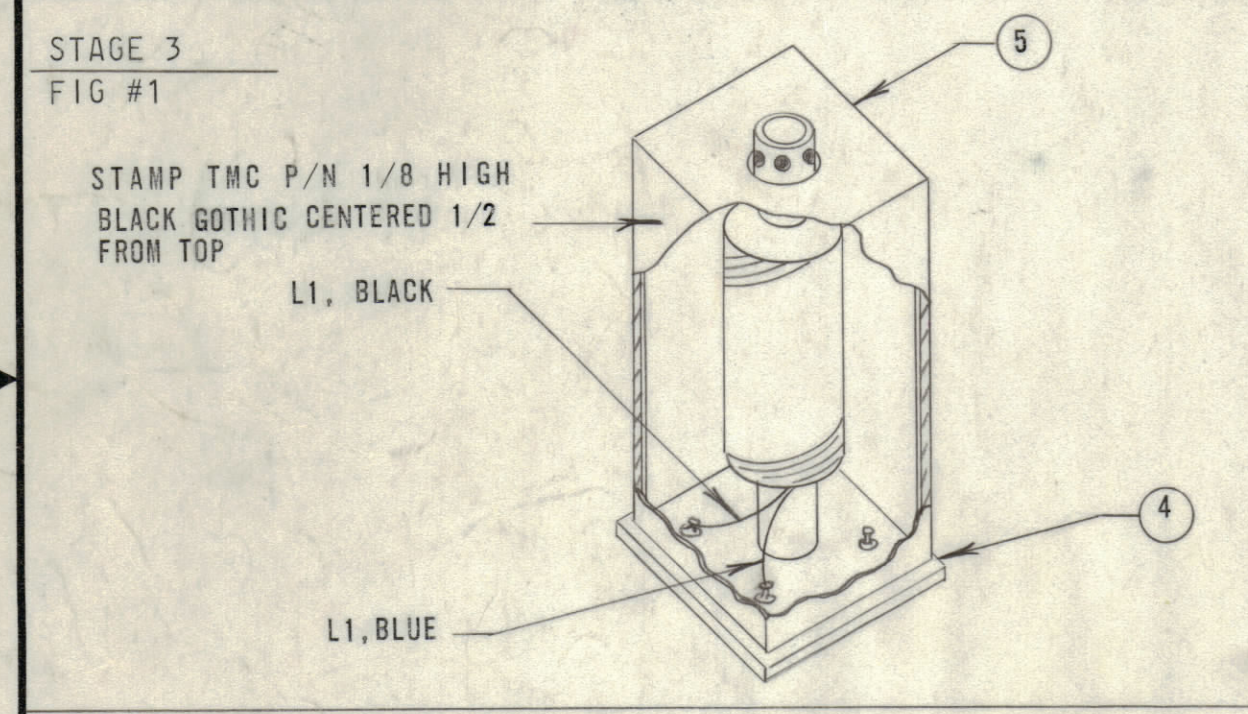
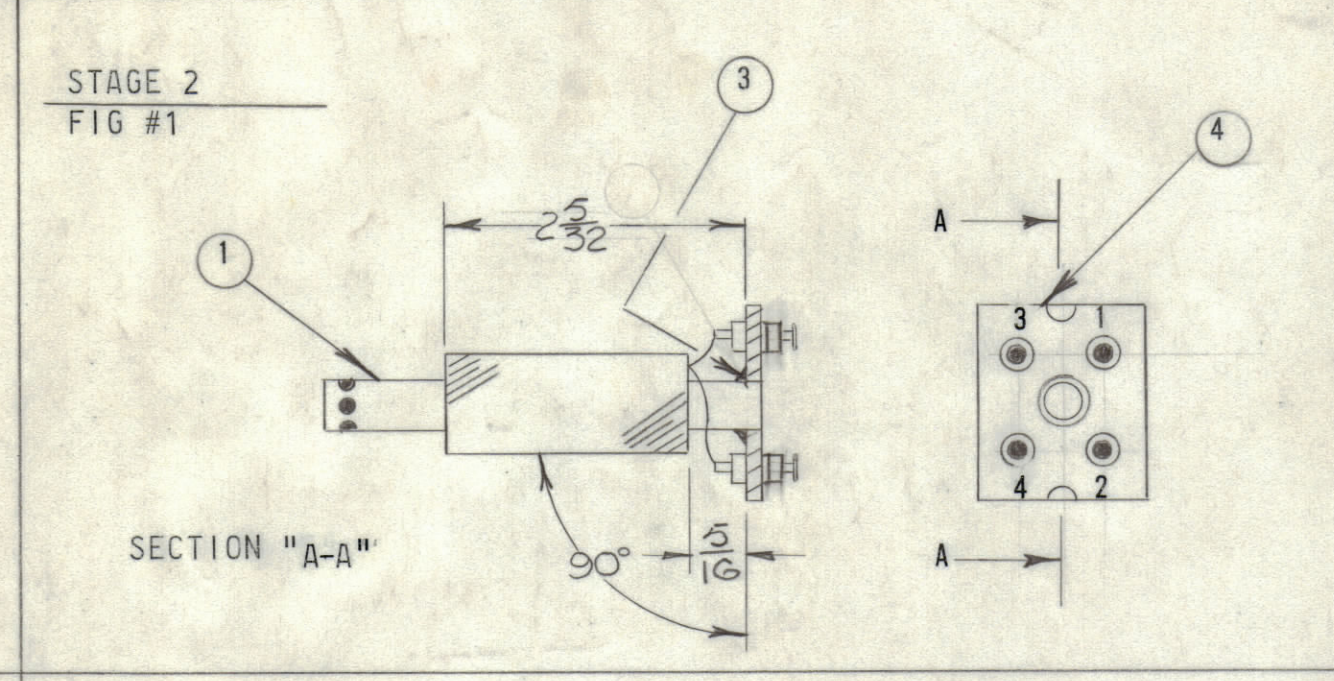
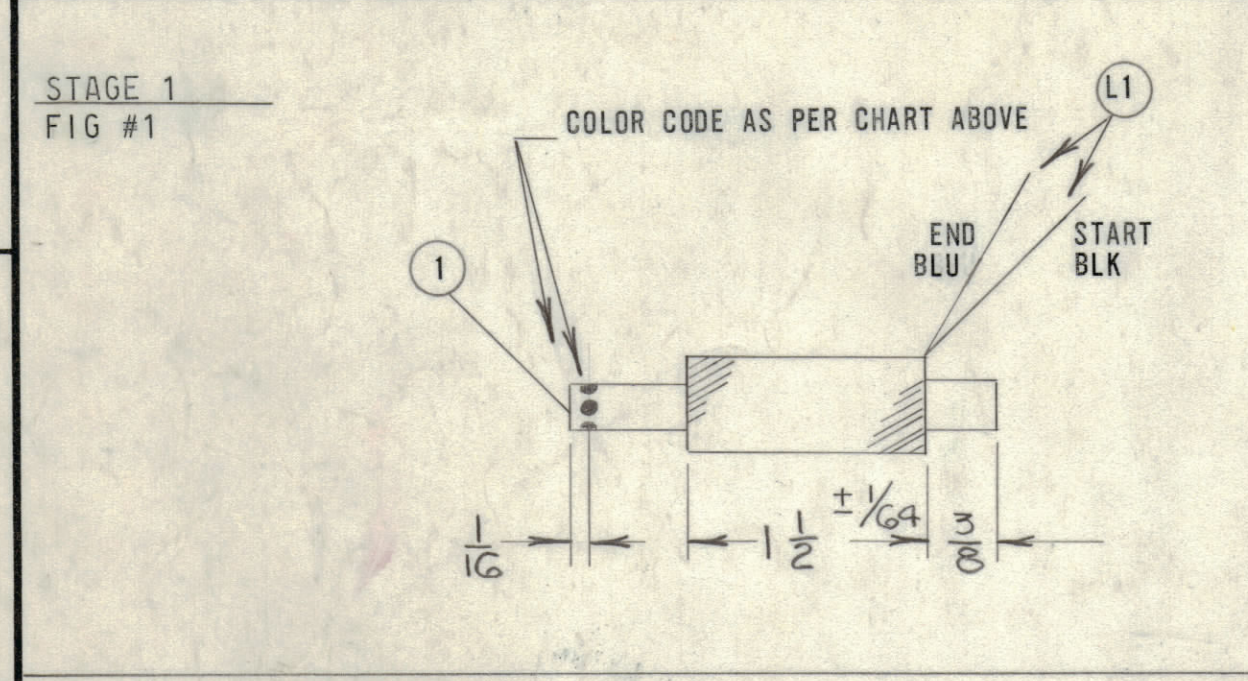
3

2

1

TMC P/N	NUMBER OF TURNS L1	TEST FREQUENCY L ± 1%				COLOR CODE COIL FORM	OSCILLATOR	REQ	DISTRIBUTED CAPACITANCE
		F	L	Q	R				
AC219-1	883	10Kc	1.318	10	9.916		1,2,3	3	20 pF

REVISIONS						
ZONE	LTR	DESCRIPTION	DATE	E.M.N.NO	DRAFT	CHKD APPD
	X	EXPERIMENTAL RELEASE	11/6/67	X	C.V.	<i>[Signature]</i>
	Ø	ORIGINAL RELEASE FOR PRODUCTION	1-8-68	Ø	RG.	<i>[Signature]</i>



PROCEDURE

- ASSEMBLE ITEM 1 TO ITEM 4 USING ITEM 3. BAKE AT 250°F FOR 1 HOUR.
- WIND L1, STARTING 3/8 FROM END OF COIL FORM
- STAKE LEADS TO COIL FORM WITH ITEM 7.
- ALL WINDINGS ARE WOUND WITH THE GEAR RATIO SHOWN.
- CUT ALL LEADS TO WITHIN 1" OF BASE COIL FORM. STRIP & TIN TO BASE OF COIL FORM
- COLOR CODE LEADS, TERMINAL BOARD AND COIL FORM AS SHOWN
- TEST INDUCTANCE PER CHART ABOVE PRIOR TO CONNECTING LEADS TO TERMINAL BOARD.
- SOLDER LEADS TO RESPECTIVE TERMINALS AND ASSEMBLE AS SHOWN.

NOTES:

- USE \_\_\_\_\_ TO \_\_\_\_\_ GRAMS TENSION ON WIRE GUIDE. CHECK FREQUENTLY
- TEST IN ACCORDANCE WITH S947.
- ALL ELECTRICAL MEASUREMENTS TAKEN IN AIR NO SLUG.

QTY. REQ.	ITEM	PART NO.	DESCRIPTION	SYMBOL
X	7	GL103	ADHESIVE, N-CEL	
X	6	BS100	SOLDER, TIN ALLOY	
1	5	BX221	CASE, TUNING COIL	
1	4	LD2255 (MS5204)	PLATE, COVER	
X	3	GL125	ADHESIVE EPOXY, SEALANT	
X	2	WI141-30-2	WIRE, ELECTRICAL MAG T	
1	1	CF137-2.250	COIL FORM	

A. MARTINENGO		LIST OF MATERIAL	
FINAL APPROVAL	DATE	THE TECHNICAL MATERIEL CORP. MAMARONECK, NEW YORK	
<i>[Signature]</i>	1-3-68	TRANSFORMER, ASSEMBLY, OSCILLATOR	
<i>[Signature]</i>	1-5-67		
<i>[Signature]</i>	DATE	SIZE CODE IDENT.NO. DWG NO. ISSUE	
<i>[Signature]</i>	1-5-68		
<i>[Signature]</i>	DATE	C 82679 AC 219 A 3134 Ø	
<i>[Signature]</i>	9-25-67		
MATERIAL		SCALE — SHEET OF	
FINISH			

3	VLRC-1	
QTY / UNIT	MODEL USED ON	ASS'Y NO.
APPLICATION		
	CODE A	S401-451
NOTICE TO PERSONS RECEIVING THIS DRAWING		
THE TECHNICAL MATERIEL CORPORATION claims proprietary right in the material disclosed hereon. This drawing is issued in confidence for engineering information only and may not be reproduced or used to manufacture anything shown hereon without permission from THE TECHNICAL MATERIEL CORPORATION to the user. This drawing is loaned for mutual assistance and is subject to recall at any time.		

4

3

2

1

AC 219

Ø

A