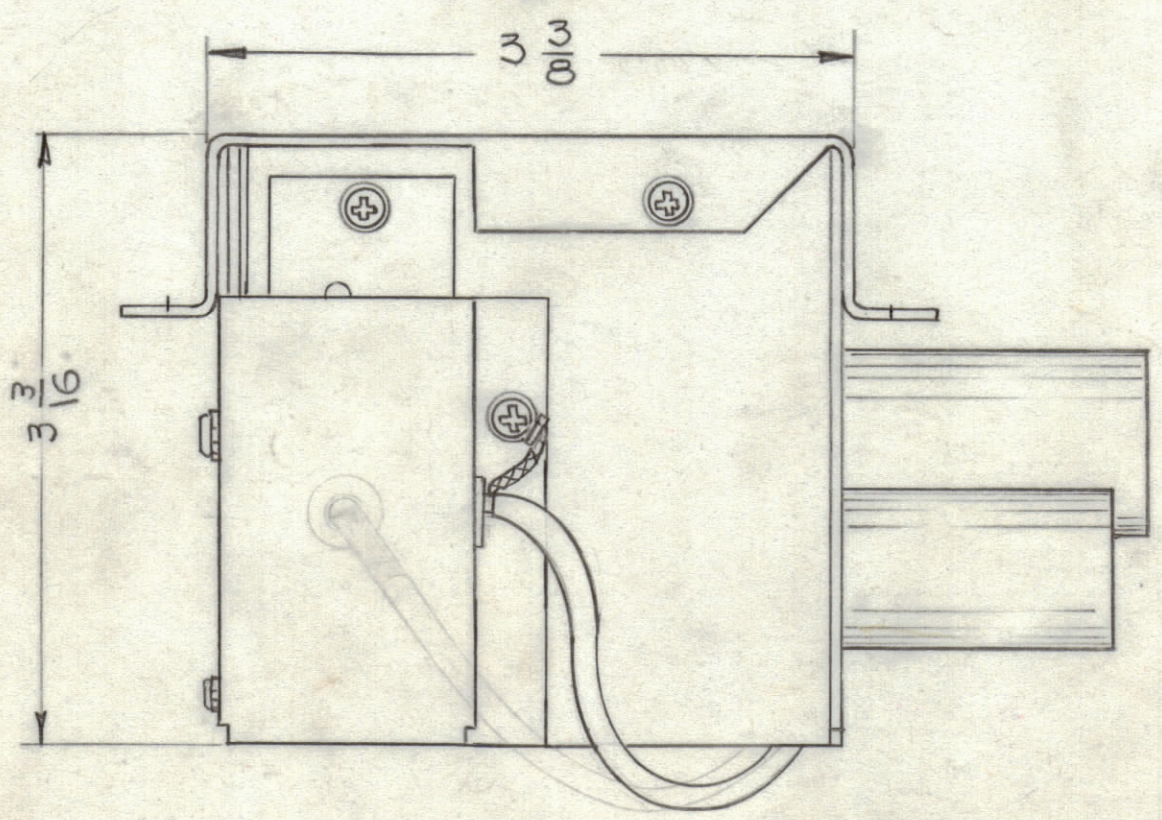
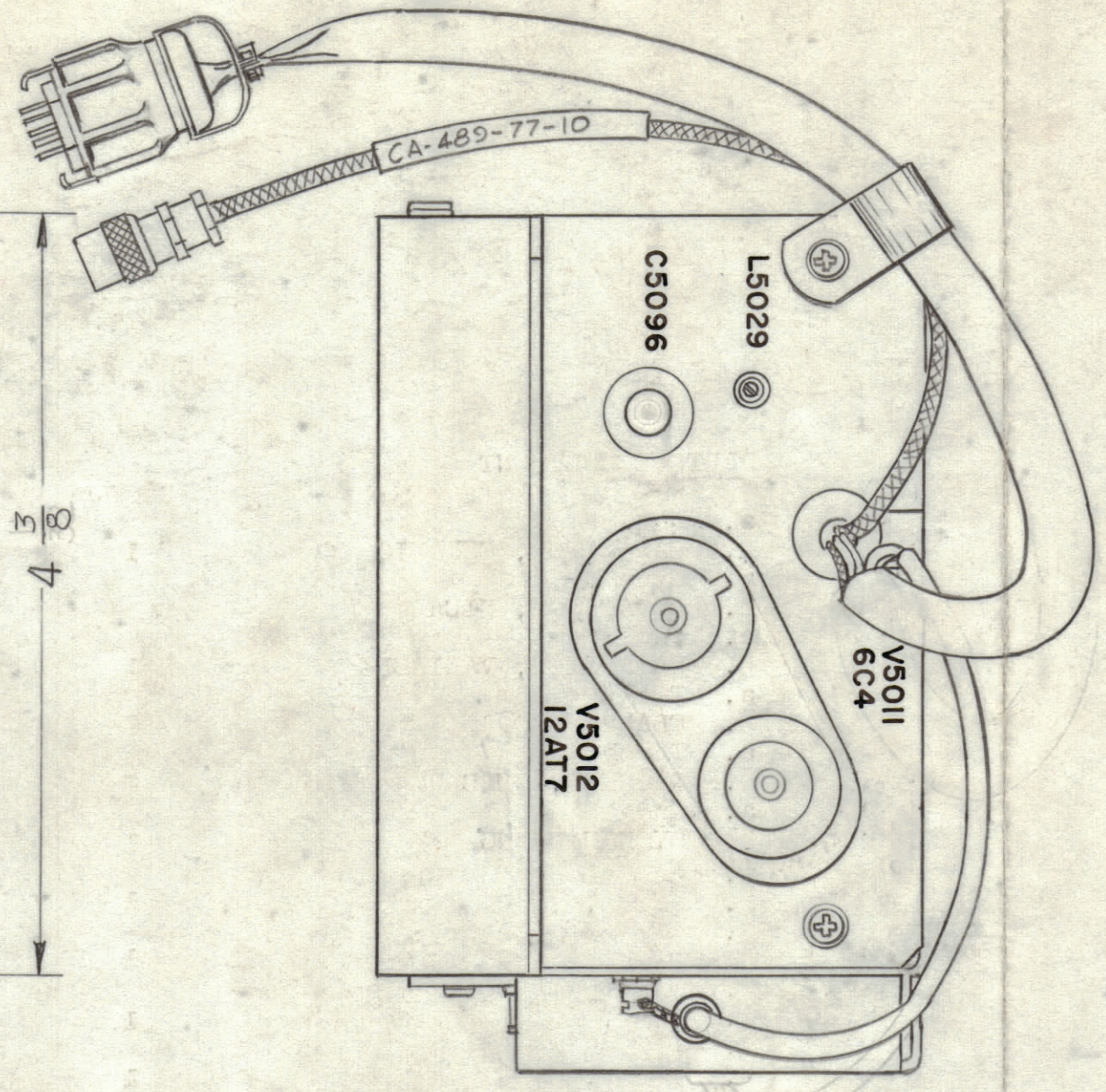
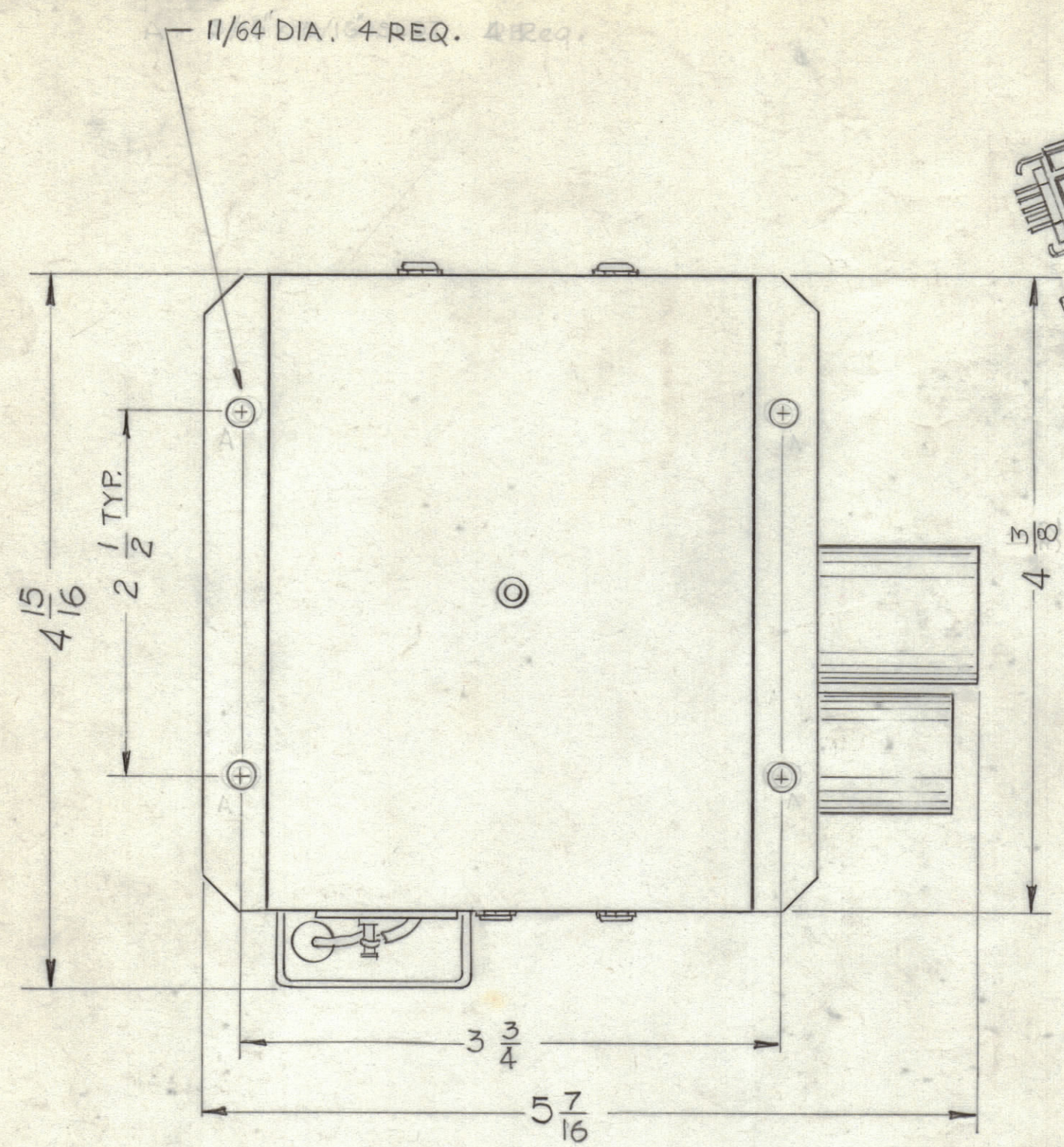


REVISIONS							
ZONE	SYM	DESCRIPTION	DATE	E.M.N. NO.	DRAFT	CHKD	APPD
A		11/64 DIA WAS 3/16 X 5/16 SL OT, 4-3/8 WAS 4-11/32, LEAD RE-LOC.	9-12-67	18476	H.G.		E.F.M.



DESCRIPTION	REQ'D
CAPACITOR, CERAMIC	1
CAPACITOR, MICA	5
CAPACITOR, VARIABLE	1
CLAMP, LOOP	2
GROMMET, RUBBER	3
OVEN HOUSING	1
COVER, OVEN	1
CHASSIS, CRYSTAL	1
BASE, OVEN HOUSING	1
COVER, OVEN TERMINAL BOARD	1
BASE, OVEN MOUNTING	1
RESISTOR, FIXED, COMPOSITION	4
INSULATION, OVEN	4
SOCKET, TUBE	2
SHIELD, TUBE	2
ELECTRON TUBE	2
WASHER, FLAT	2
WASHER, LOCKING	21
NUT, HEXAGONAL	4
SCREW, MACHINE	26
TERMINAL LUG	7
CABLE ASSEMBLY	2
R.F. COIL	1

NOTICE TO PERSONS RECEIVING THIS DRAWING
 THE TECHNICAL MATERIEL CORPORATION claims proprietary right in the material disclosed herein. This drawing is issued in confidence for engineering information only and may not be reproduced or used to manufacture anything shown herein without permission from THE TECHNICAL MATERIEL CORPORATION to the user. This drawing is loaned for mutual assistance and is subject to recall at any time.

Property of:
THE TECHNICAL MATERIEL CORPORATION
 MAMARONECK, NEW YORK

REF : A-2505

REQ'D	ITEM	PART NUMBER	DESCRIPTION	SYMBOL
STRUMER LIST OF MATERIAL				
MATERIAL			THE TECHNICAL MATERIEL CORP. MAMARONECK, NEW YORK	
FINISH			TITLE OVEN ASSEMBLY HIGH FREQUENCY Z.M.C.	
UNLESS OTHERWISE SPECIFIED DIMENSIONS ARE IN INCHES AND INCLUDE CHEMICALLY APPLIED OR PLATED FINISHES			DRAWN G.D.L.	DATE 12/29/67
DECIMALS .X ± .05 .XX ± .01 .XXX ± .005			CHECKED Hde	DATE 1/1/68
FRACTIONS ± 1/64 ANGLES ± 0° 30'			ELECT. DES. ZM	DATE 1/1/68
TOLERANCES			MECH. DES. ZM	DATE 1-28-68
THE CONTENTS OF THIS DRAWING ARE THE EXCLUSIVE PROPERTY OF THE TECHNICAL MATERIEL CORP. ITS UNAUTHORIZED USE OR REPRODUCTION IN WHOLE OR IN PART IS STRICTLY FORBIDDEN.			FINAL APPROVAL BP	DATE
NOTES			AO-110	A

AO-110 A