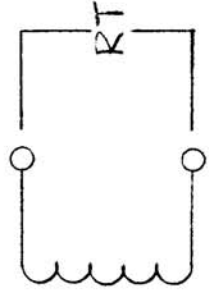
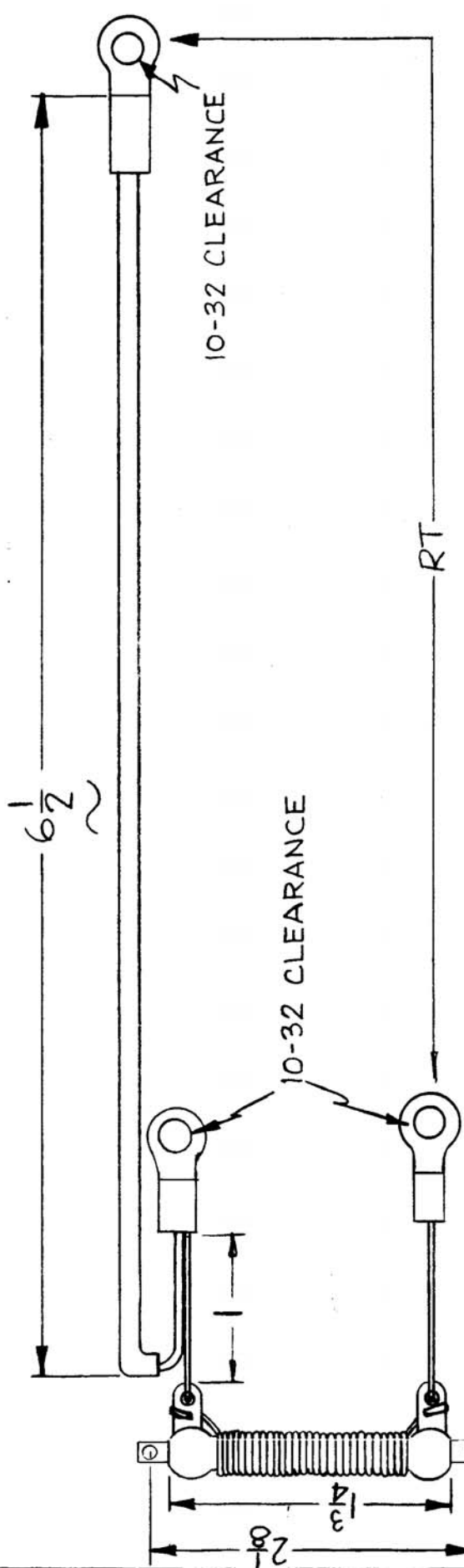


REQ. PER. UNIT	USED ON	AR 133	C
2	MODEL	APP-4	
	ASSY. NO.	A-2034	
	DATE	12-9-60	



**SPECIFICATIONS**  
 RT = .075 Ω  
 TOL. = ± 10%  
**TEST EQUIPMENT:**  
 WHEATSTONE BRIDGE, MODEL RN-1  
 INDUSTRIAL INSTRUMENTS OR EQUIV.

REQ. ITEM	PART NO.	DESCRIPTION	SYMBOL
		THE TECHNICAL MATERIEL CORP. MAMARONECK, NEW YORK	
		SHUNT POWER INPUT	
		MATERIAL	
		TYPE & TEMPER	
		HEATTREAT. SPEC.	
		DRAWN	
		CHECKED	
		FINISH & SPEC. NO.	
		ELEC. DES. APP. MECH. DES. APP.	

DEC. DIM. ±	SCALE: 2A-2034
FRAC. DIM. ±	MAXIMUM ALLOWABLE TOLERANCES HAVE BEEN DETERMINED AND ANY DEVIATIONS WILL BE CAUSE FOR REJECTION.
ANGULAR DIM. ±	REMOVE ALL BURRS AND SHARP EDGES

ISSUE ITEM	CHANGED FROM	DATE	CH. NO.	DRAFTS	CHECKER	ENG. APP.
C	6-1/2 WAS 7-1/2	12-20-66	17546	440	JCF	0003
B	ADD TEST EQUIP.	7-13-66	6532	HLA	JCF	DR
A	Added Schematic Space BKT'S 1-2 Added Dim's & Hole Sizes	3/14/61	4425	DM	JCF	RK