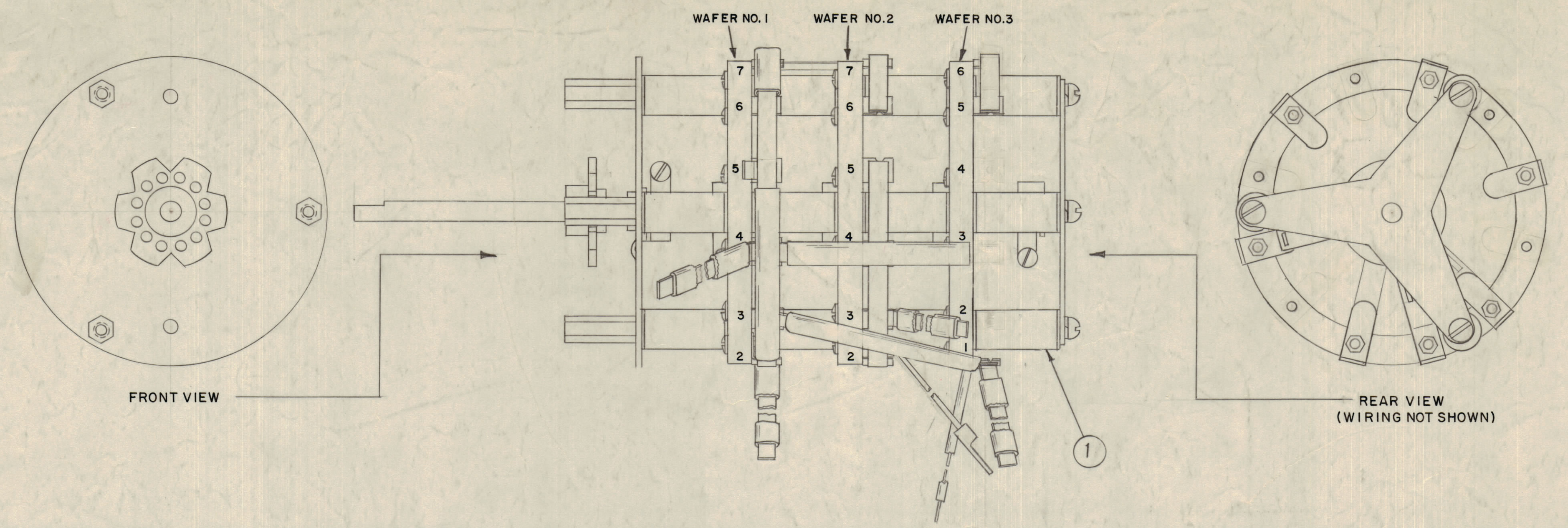
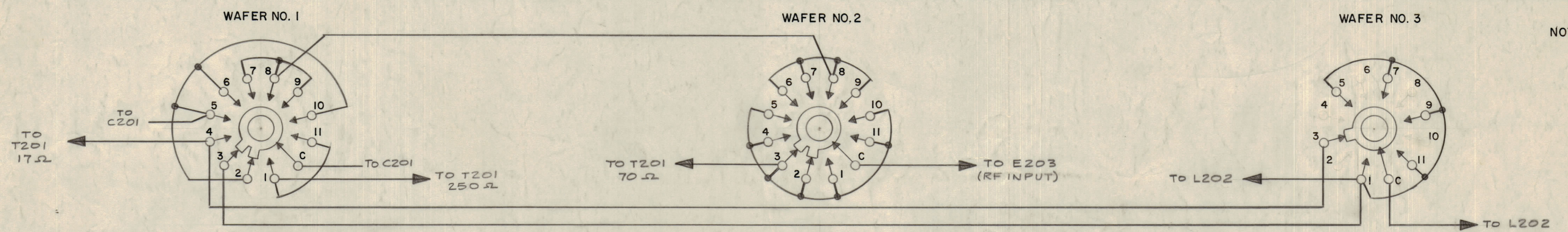


IF IT IS FOUND DESIRABLE TO CHANGE ANY TOLERANCE OR OTHER DETAIL SPECIFIED ON THIS DRAWING NOTIFY THE PURCHASER PROMPTLY.
 MAXIMUM ALLOWABLE TOLERANCES HAVE BEEN DETERMINED AND DEVIATIONS WILL BE CAUSE FOR REJECTION. REMOVE ALL BURRS AND SHARP EDGES

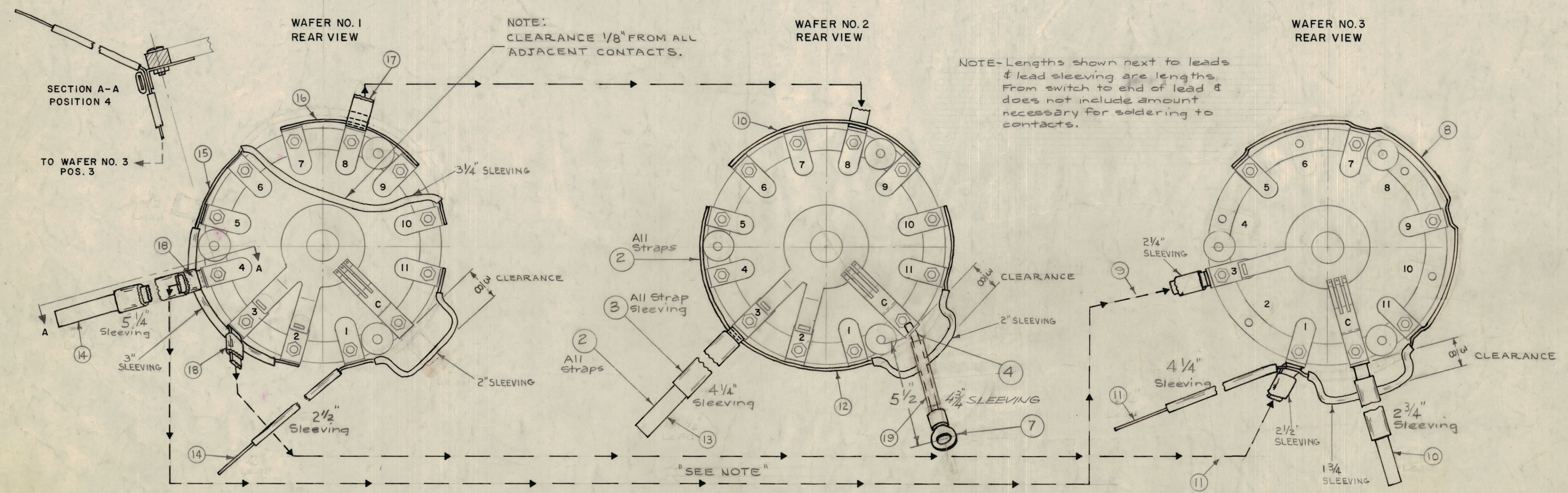
NOTICE TO PERSONS RECEIVING THIS DRAWING
 THE TECHNICAL MATERIEL CORPORATION claims proprietary right in the material disclosed hereon. This drawing is issued in confidence and is not to be reproduced or used to manufacture any item shown hereon without permission from THE TECHNICAL MATERIEL CORPORATION to the user. This drawing is loaned for mutual assistance and is subject to recall at any time.
 Property of:
 THE TECHNICAL MATERIEL CORPORATION
 MAMARONECK, NEW YORK



SECTIONS - 3
 CONTACTS - BREAK BEFORE MAKE (NON-SHORTING)
 DETENT - 60° PINNED TO SHAFT
 ROTOR SHAFT & WAFERS - STEATITE (SILICONE IMPREG.)
 WAFER SPACERS - STEATITE (GLAZED)
 1/4 D. EXTENSION SHAFT - BRASS, NICKEL PLATE.
 FLASHOVER (at 60 cps)
 CONTACT TO GROUND - 20KV (min)
 CONTACT TO CONTACT - 12KVpk (min)
 CURRENT CAP. - 30A. MAX.



NOTE - ON SCHEMATIC, CK-405,
 S201B IS WAFER NO. 1
 S201C IS WAFER NO. 2
 S201D IS WAFER NO. 3



6"	19	PX 370-9-7	INSULATION, SLEEVING, TEFLON
2	18	MS 203-1-0.50	LEAD, CONNECTING, 1/4" WIDE
1	17	MS 203-1-2.00	
1	16	MS 203-1-3.00	
1	15	MS 203-1-3.00	
2	14	MS 203-1-6.00	
1	13	MS 203-1-5.00	
1	12	MS 203-1-8.75	
1	11	MS 203-1-7.75	
2	10	MS 203-1-4.00	
1	9	MS 203-1-3.25	
1	8	MS 203-1-9.75	LEAD, CONNECTING, 1/4" WIDE
1	7	TE 141-3	Lug, Terminal
X	6	BS 100	Solder, Soft
	5	DELETED	
X	4	WL 100-1	Wire, Buss, Size 10
36"	3	PX 370-4-7	Insulation, Teflon, Size
	2	DELETED	
1	1	SW 259	Switch, Rotary

E	REVISED COMPLETELY	4-10-67	18030	L.A.K.	15		
D	DELETE, CHG'D, QTY 113 TO 36 ADDED 5 THRU 18, 20 & 87 DELETED 1, 2, 3, 4, 5, 6, 7, 8, 9, 10, 11, 12, 13, 14, 15, 16, 17, 18, 19, 20, 21, 22, 23, 24, 25, 26, 27, 28, 29, 30, 31, 32, 33, 34, 35, 36, 37, 38, 39, 40, 41, 42, 43, 44, 45, 46, 47, 48, 49, 50, 51, 52, 53, 54, 55, 56, 57, 58, 59, 60, 61, 62, 63, 64, 65, 66, 67, 68, 69, 70, 71, 72, 73, 74, 75, 76, 77, 78, 79, 80, 81, 82, 83, 84, 85, 86, 88, 89, 90, 91, 92, 93, 94, 95, 96, 97, 98, 99, 100	8-3-66	16704	R.M.E.	15		
C	CONTACTS 2, 4, 6, 8, 10 DEL. ON WAFER # 3 II, 5 (PX 370-9-7) DEL. L.T.E.D.	2-19-65	13622	J.F.	15		
B	LEAD & SLEEVING LENGTHS REVISED ON WAFERS # 1, 2, 3 (REAR VIEW)	1-28-65	13383	J.F.	15		
A	POSITION OF CONN. SHOWN CLEARANCE NOTES & DIM. ADD	8-5-64	12045	J.F.	15		
ISSUE	ITEM	CHANGED FROM	DATE	CN. NO.	DRAFTS	CHECKER	ENG. APP.
TOLERANCES		SCALE:					
ALL OTHERS	DEC. DIM. ±	DRILL, PUNCH, COMMERCIAL STOCK					
	FRAC. DIM. ±	SIZES AND MANUFACTURERS					
	ANGULAR DIM. ±	TOLERANCES ARE NOT INCLUDED.					

ZONE	LTR	DESCRIPTION	DATE	E.M.N.O	DRAFT	CHKD	APPD
		ON WAFER # 2 LENGTH OF (19) 4 3/4 WAS 5 1/4	1/6/69	19180	L.A.K.	15	15

NOTE: CONNECTIONS BETWEEN CONTACT 4, WAFER 1 TO CONTACT 3, WAFER 3; AND CONTACT 3, WAFER 1 TO CONTACT 1, WAFER 3; MUST CLEAR SWITCH BY AT LEAST 1/8".

1	AS-113	TU-2	10-26-59
REQ PER UNIT	MODEL	PROJECT NO.	DATE
		ASSY. NO.	
		USED ON	

REQ	ITEM	PART NO.	DESCRIPTION	SYMBOL
STOCK SIZE				
MATERIAL				
WEIGHT PER PC				
TYPE & TEMPER				
HEAT TREAT SPEC.				
FINISH & SPEC. NO.				

THE TECHNICAL MATERIEL CORP.
 MAMARONECK, NEW YORK
 AS-113 ASSY.
 (RESISTANCE SELECTOR SW.)
 DRAWN: 10/26/59
 ELEC. DES. APP. [Signature]
 MECH. DES. APP. [Signature]
 CHECKED: [Signature]
 FINAL APPROVAL: [Signature]
 AS113 F

AS113 F