

IF IT IS FOUND DESIRABLE TO CHANGE ANY TOLERANCE OR OTHER DETAIL SPECIFIED ON THIS DRAWING NOTIFY THE PURCHASER PROMPTLY.

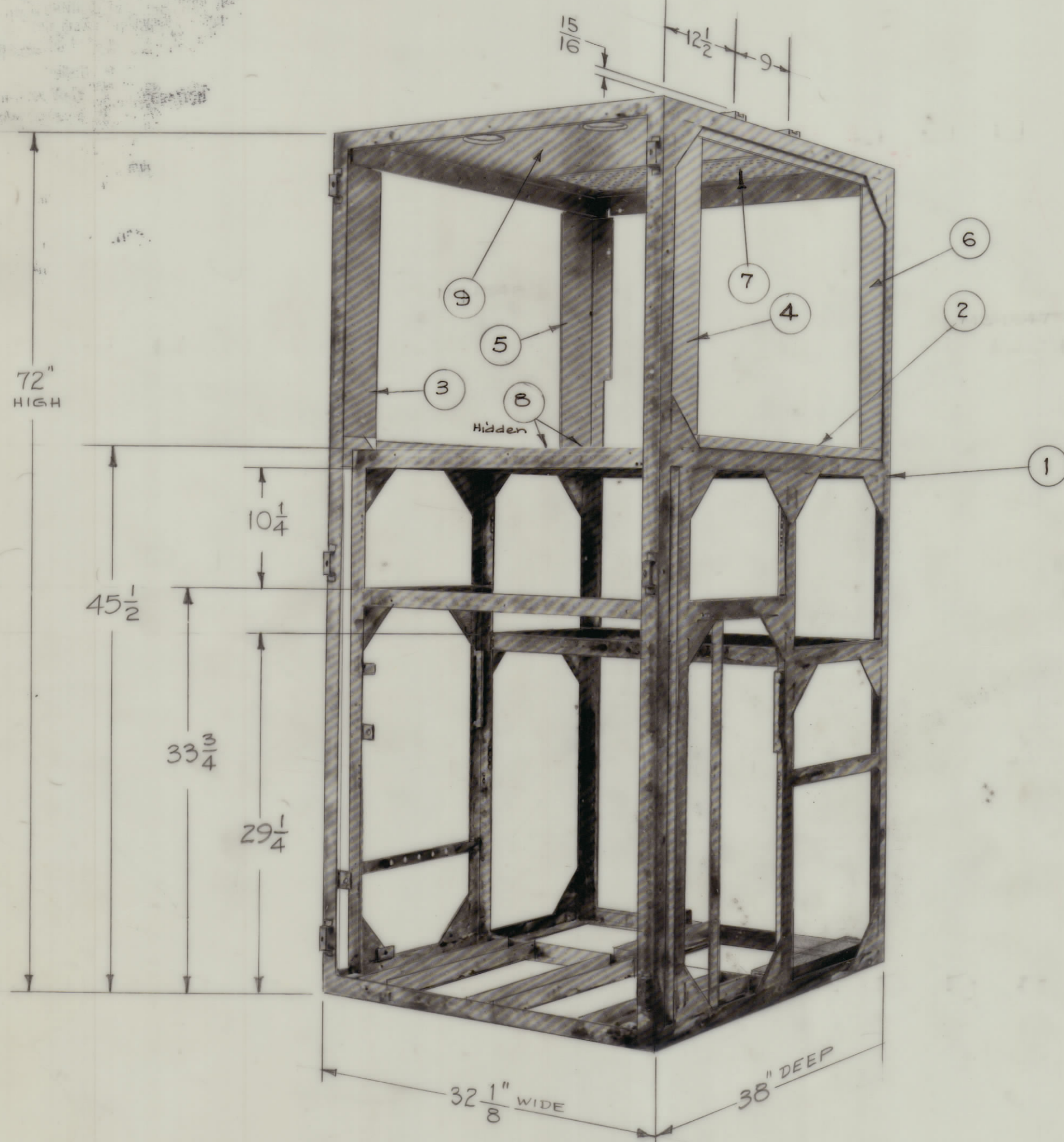
MAXIMUM ALLOWABLE TOLERANCES HAVE BEEN DETERMINED AND DEVIATIONS WILL BE CAUSE FOR REJECTION REMOVE ALL BURRS AND SHARP EDGES.

NOTICE TO PERSONS RECEIVING THIS DRAWING

THE TECHNICAL MATERIEL CORPORATION claims proprietary right in the material disclosed hereon. This drawing is issued in confidence for engineering information only and may not be reproduced or used to manufacture anything shown hereon without permission from THE TECHNICAL MATERIEL CORPORATION to the user. This drawing is loaned for mutual assistance and is subject to recall at any time.

Property of:

THE TECHNICAL MATERIEL CORPORATION
MAMARONECK, NEW YORK



Material - Frame - Steel

AX-182

All other - Aluminum

Note - Items shown to be Riveted to Item 1 (Frame) by Frame Mfg.

LD-592

LD-570

REQ	ITEM	PART NO.	DESCRIPTION	SYMBOL
X	10	Rivets	As Required by Mfg.	
1	9	MS-1548	Shield, Top	
1	8	MS-1758	Perforated Sheet, PA Deck	
1	7	MS-1757	Perforated Sheet, Top	
1	6	MS-1590	Bracket Shield, Rear, Right	
1	5	MS-1591	Bracket Shield, Rear, Left	
1	4	MS-1706	Bracket Shield, Front, Right	
1	3	MS-1589	Bracket Shield, Front, Left	
1	2	MS-1547	Chassis, PA	
1	1	MS-1456	Main Frame	

THE TECHNICAL MATERIEL CORP. MAMARONECK, NEW YORK			
MAIN FRAME SUB-ASSY.			
MATERIAL	WEIGHT PER PC.		
TYPE & TEMPER			
		16 ¹ / ₂ 12/59	
HEAT TREAT SPEC			
FINISH & SPEC. NO.			
			AX-182

ISSUE	ITEM	CHANGED FROM	DATE	CH. NO	DRAFTS	CHECKER	ENG. APP.
TOLERANCES		SCALE: NPL		RMS-1456			
ALL OTHERS		DEC. DIM. ±		DRILL, PUNCH, COMMERCIAL STOCK SIZES AND MANUFACTURERS TOLERANCES ARE NOT INCLUDED.			
		FRAC. DIM. ±					
		ANGULAR DIM. ±					

REQ. PER UNIT	MODEL	PROJECT NO.	ASSY. NO.	DATE
1	GPT-10K()3		AX-186	12-12-59
1	GPT-10K()2		AX-186	12-12-59

USED ON