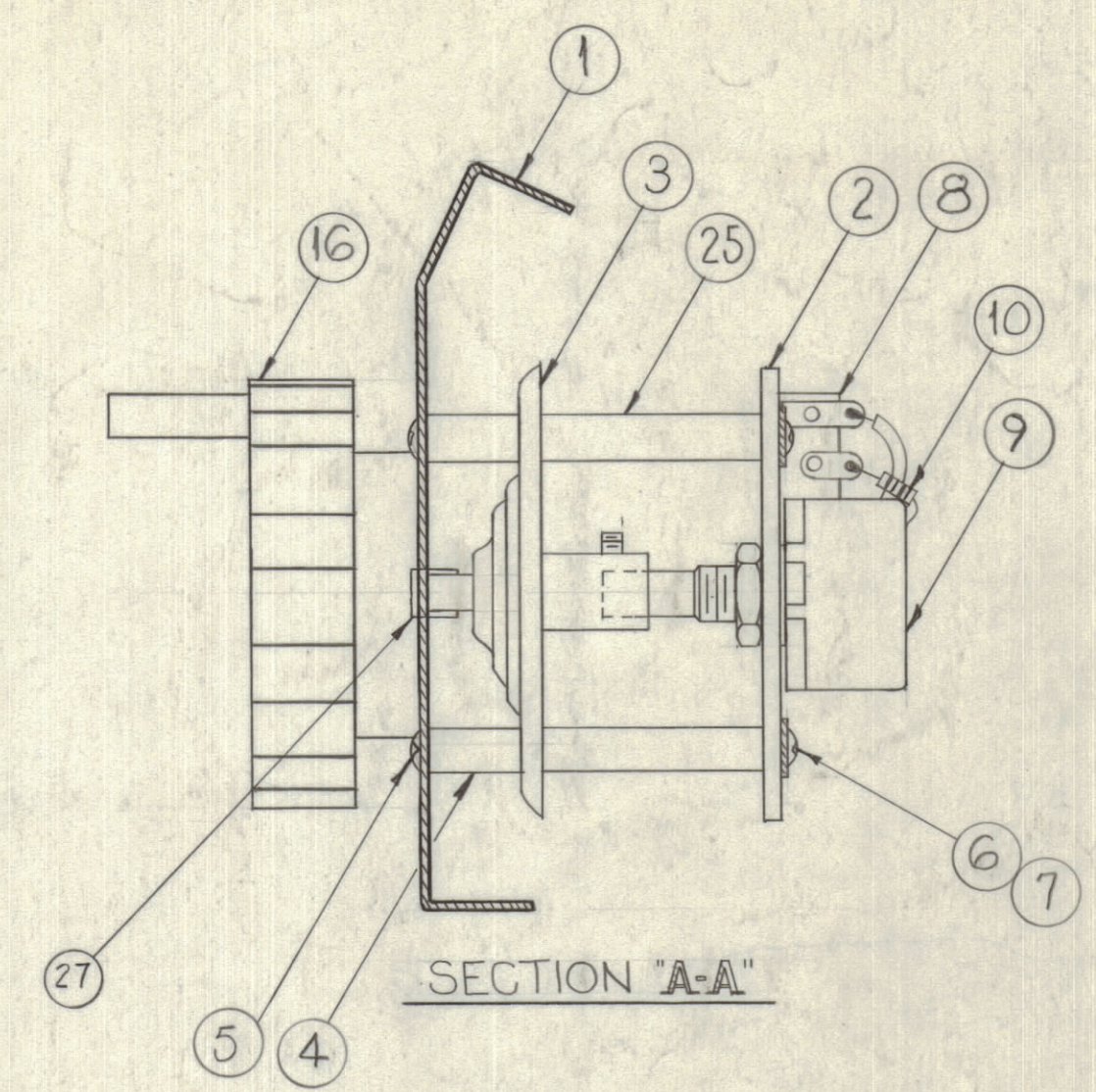
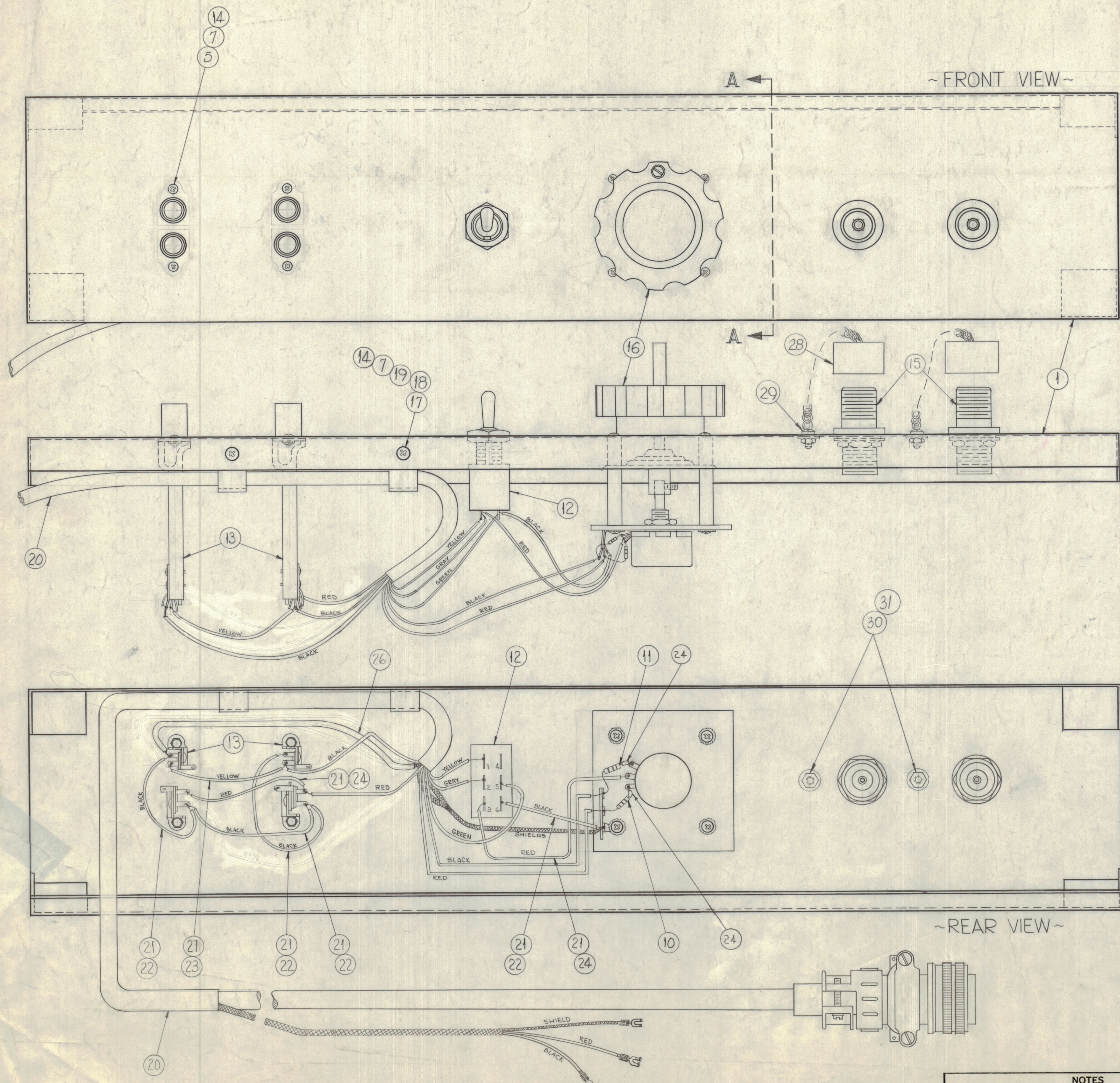


REVISIONS							
ZONE	SYM	DESCRIPTION	DATE	E.M.N. NO.	DRAFT	CHKD	APPD
F4	A	ADDED ITEM #27 TO PICT. & BUILDUP	1/12/62	10550			
B8,9	B	ON REAR VIEW SHIELDS ADDED FROM IT.#20 TO GROUND	3-31-64	11140	ATB		
B2	C	ITEM #9 RV4ATFD504A WAS RV4ATR D504A	8-31-64	12151	ATB		
	D	IT.#28,29,30,31 ADDED	3-9-66	15867	WLU		
	E	CHG'D. POS. OF BLACK & RED LEADS. ADDED IT.#24 BETWEEN IT.#10 & TERMINAL	7-29-64	16665	RME		



REQ'D.	ITEM	PART NUMBER	DESCRIPTION	SYMBOL
2	31	LWEO4MEN	WASHER, LOCK, EXT.	
2	30	NTH0440BN8	NUT, HEXAGONAL	
2	29	SCBP0440BN4	SCREW, MACHINE	
2	28	MX-913/U	CAP AND CHAIN, N TYPE CAN	
1	27	BB-117-5	NYLON PANEL BEARING	
5"	26	PX-100-1-.133	INSULATION, SLEEVING	BLK
4	25	TE-117-5	SPACER, 1/4 DIA X 1" LONG	
X	24	PX-104-3-.034	INSULATION, SLEEVING	RED
X	23	PX-104-2-.034	INSULATION, SLEEVING	YELLOW
X	22	PX-104-1-.034	INSULATION, SLEEVING	BLACK
X	21	WL-100-7	WIRE, BUSS-BAR, TINNED	
1	20	CA-611	CABLE, MAIN	
2	19	FWO6HBN	WASHER, FLAT	
2	18	SCFP0632BN5	SCREW, MACHINE	
2	17	CU-102-4	CLAMP, "G" TYPE	
1	16	MP-120	KNOB ASSEMBLY	
2	15	UG-30D/U	ADAPTER, STRAIGHT, BULK HD. MTC, N TYPE	CP-101 CP-102
6	14	NTH0632BN8	NUT, HEX.	
4	13	JJ-116-2	JACK - TELEPHONE, TYPE	
1	12	ST22N	SWITCH, TOGGLE	S101
1	11	RC20GF274K	RESISTOR - FIXED COMPOSITION	R103
1	10	RC20GF155K	RESISTOR - FIXED COMPOSITION	R102
1	9	RV4ATRD504A	RESISTOR VARIABLE COMPOSITION	R101
1	8	TM-117-13	STRIP, TERMINAL	
10	7	LWEO6MRN	LOCKWASHER, EXTERNAL TOOTH	
4	6	SCBP0632BN21	SCREW, MACHINE	
8	5	SCBP0632BN5	SCREW, MACHINE	
4	4	TE-135-3	STAND-OFF, SPACER	
1	3	PO-102	DRIVE, DIAL	
1	2	MS-2534	PLATE, MOUNTING, SWEEP POTENTIOMETER	
1	1	MS-2531 (LD-B94)	PANEL, FRONT, MACHINING	

LIST OF MATERIAL						
MATERIAL	THE TECHNICAL MATERIEL CORP. MAMARONECK, NEW YORK					
FINISH	TITLE CONTROL PANEL ASSEMBLY					
Q'TY./UNIT	SCALE	MODEL USED ON	CODE	ASSY. NO.	DATE	FINAL APPROVAL
					10-3-62	
UNLESS OTHERWISE SPECIFIED DIMENSIONS ARE IN INCHES AND INCLUDE CHEMICALLY APPLIED OR PLATED FINISHES				DATE	DATE	DATE
				10-4-62		
THE CONTENTS OF THIS DRAWING ARE THE EXCLUSIVE PROPERTY OF THE TECHNICAL MATERIEL CORP. ITS UNAUTHORIZED USE OR REPRODUCTION IN WHOLE OR IN PART IS STRICTLY FORBIDDEN.				DECIMALS X ± .01 XX ± .01 XXX ± .005	FRACTIONS ± 1/64 ANGLES ± 30'	DATE 10-4-62
				TOLERANCES	DATE	DATE
					10-4-62	10-4-62
					AX-248	E
					SHEET	REV. LTR.

NOTES

AX-248

A