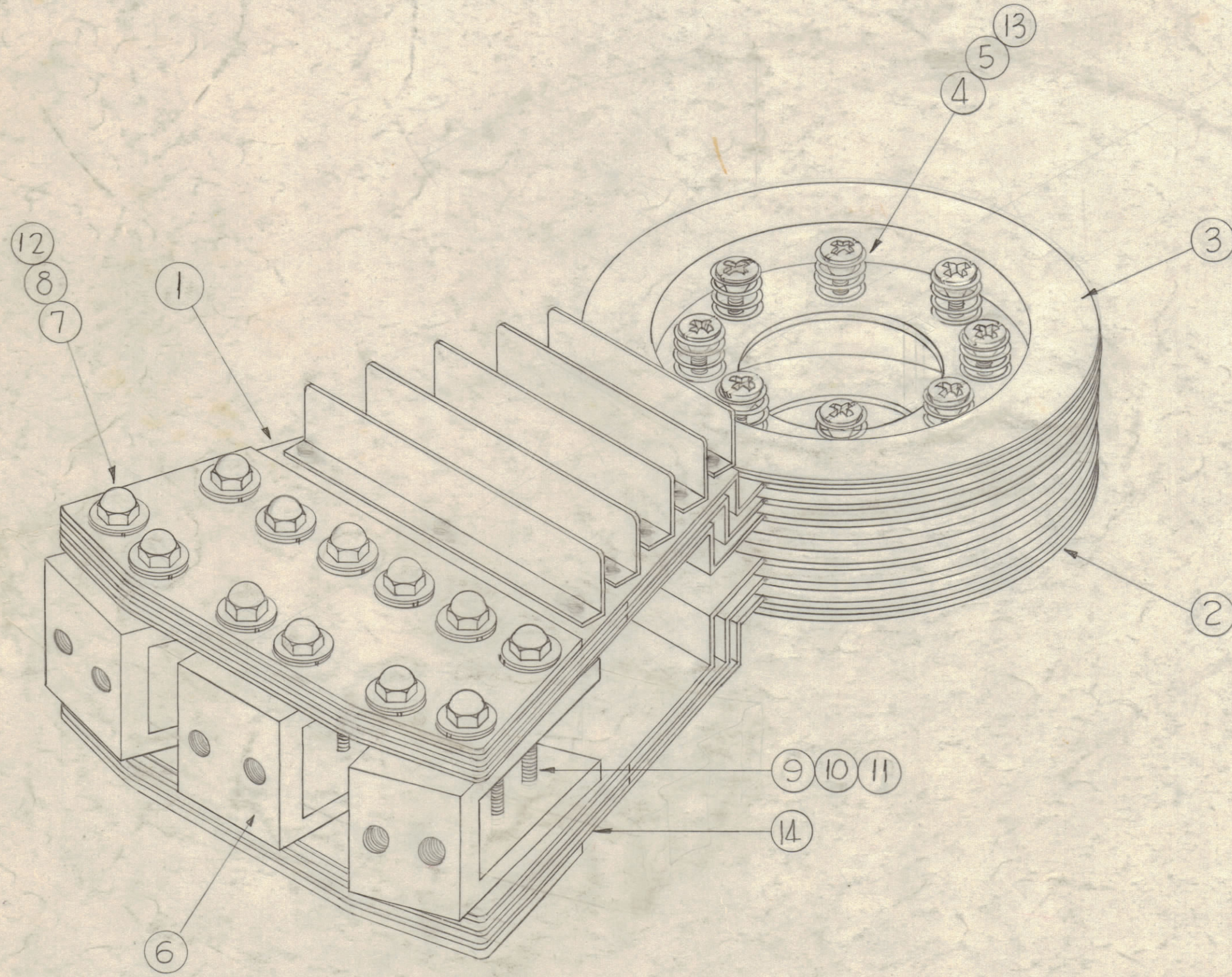


NOTICE TO PERSONS RECEIVING THIS DRAWING

THE TECHNICAL MATERIEL CORPORATION claims proprietary right in the material disclosed hereon. This drawing is issued in confidence for engineering information only and may not be reproduced or used to manufacture anything shown hereon without permission from THE TECHNICAL MATERIEL CORPORATION to the user. This drawing is loaned for mutual assistance and is subject to recall at any time.

Property of:
THE TECHNICAL MATERIEL CORPORATION
MAMARONECK, NEW YORK



1	14	PM-709-2	CONTACT, WIPER BANDSWITCH
8	13	TE0832AE52R	Spacer, Threaded
24	12	LWS10MRP	Washer, Lock, Split
12	11	LWS04MRP	Washer, Lock, Split
12	10	NTH0440BP6	Nut, Hex
12	9	SCBP0440BP16	Screw, Machine
24	8	FWIOHBP	Washer, Flat
24	7	NTC1032BPL	Cap, Nut
3	6	PM-598-2	Brk't, Wafer, R.F. Bandswitch
8	5	SCBP0832BP20	Screw, Machine
8	4	SP-116-S	Spring
1	3	PM-698	Pressure Cup, Bandswitch
1	2	PM-701	Retainer Spring & Contact
1	1	PM-709-1	Contact, Wiper, Bandswitch

REQ. ITEM	PART NO.	DESCRIPTION	SYMBOL
THE TECHNICAL MATERIEL CORP. MAMARONECK, NEW YORK			
WIPER ASSEMBLY			
MATERIAL			
DRAWN		CHECKED	FINAL APPROVAL
TYPE & TEMPER		HEAT TREAT. SPEC.	
FINISH & SPEC. NO.		ELEC. DES. APP.	MECH. DES. APP.
		SHEET OF	

K		IF 12 WAS LWS10MRN	3-2-67	17879	HCA	4/7	
J		KEYWAY DELETED FROM IT 2 & IT 3	5-9-66	CC	WHS	8/15	
H	A4	BUILD-UP UPDATED	12/23/63	10642			
G	C2	USED ON CHRT UPDATED	2-7-63	8137			
F	B,C2	ITEM (9) WAS SCFP0440BN16	1-5-63	7954			
E	CZ, B2	ITEM (7) WAS NTC1032BPL; (8) WAS FWIOHBP; (12) WAS LWS10MRN	10-8-62	7306			
		ITEM (14) ADDED; ITEM (1) WAS PM-709, 2 REQ.					
SYM	ZONE	DESCRIPTION	DATE	CH. NO.	DRAFTS	CHECKER	ENG. APP.

UNLESS OTHERWISE SPECIFIED:
DIMENSIONS ARE IN INCHES
TOLERANCES ON DIMENSIONS ± 1/64 DECIMALS ± .005 ANGLES ± 1/2°
MAXIMUM ALLOWABLE TOLERANCES HAVE BEEN DETERMINED AND ANY DEVIATIONS WILL BE CAUSE FOR REJECTION. REMOVE ALL BURRS & SHARP EDGES

1	GPT-40K() 4	AS-125	AX-266	12-23-63
1	GPT-40K			8-19-61
REQ. PER UNIT	MODEL	SECTION	ASS'Y. NO.	DATE
USED ON				

AX-268 K