

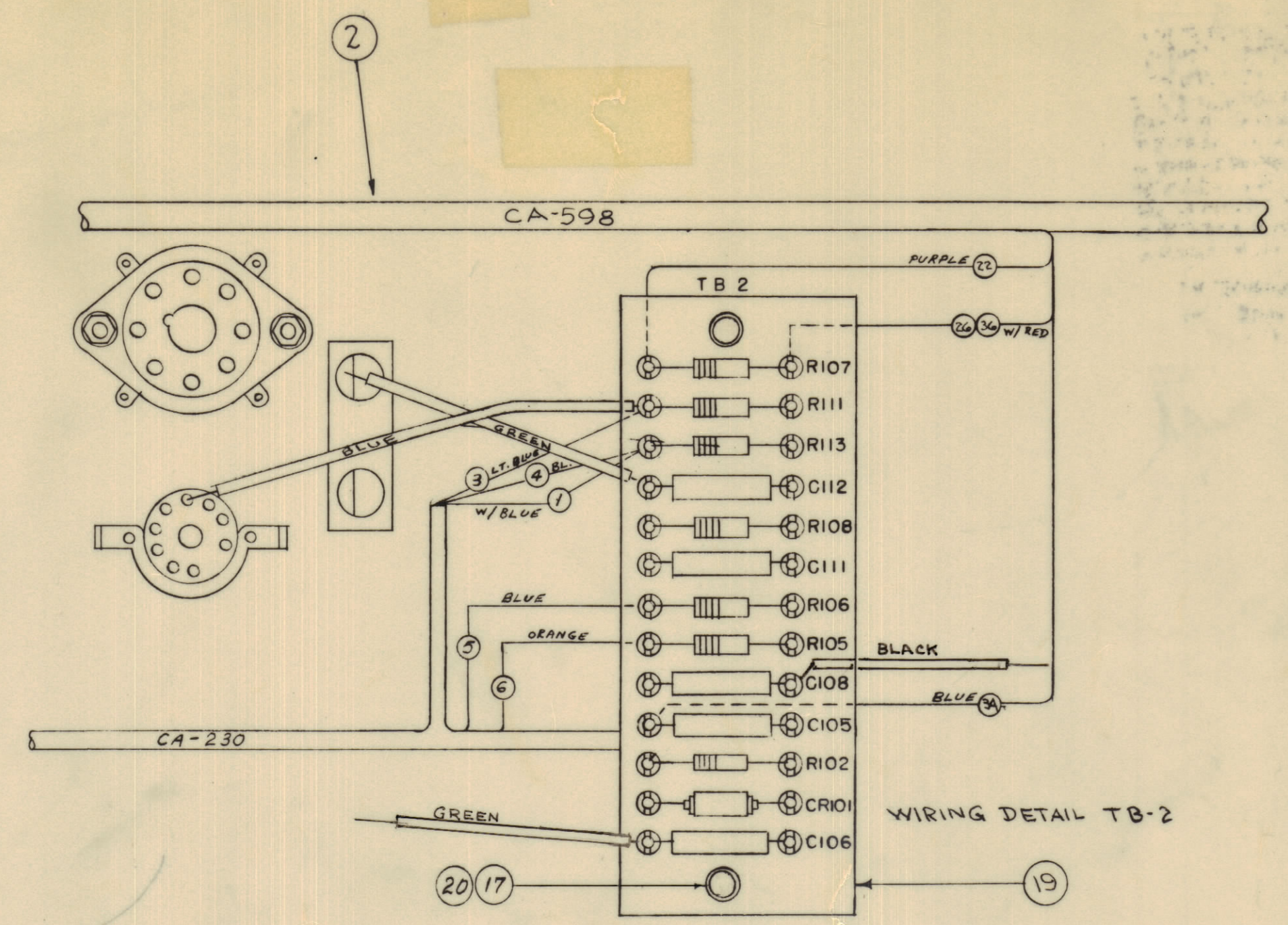
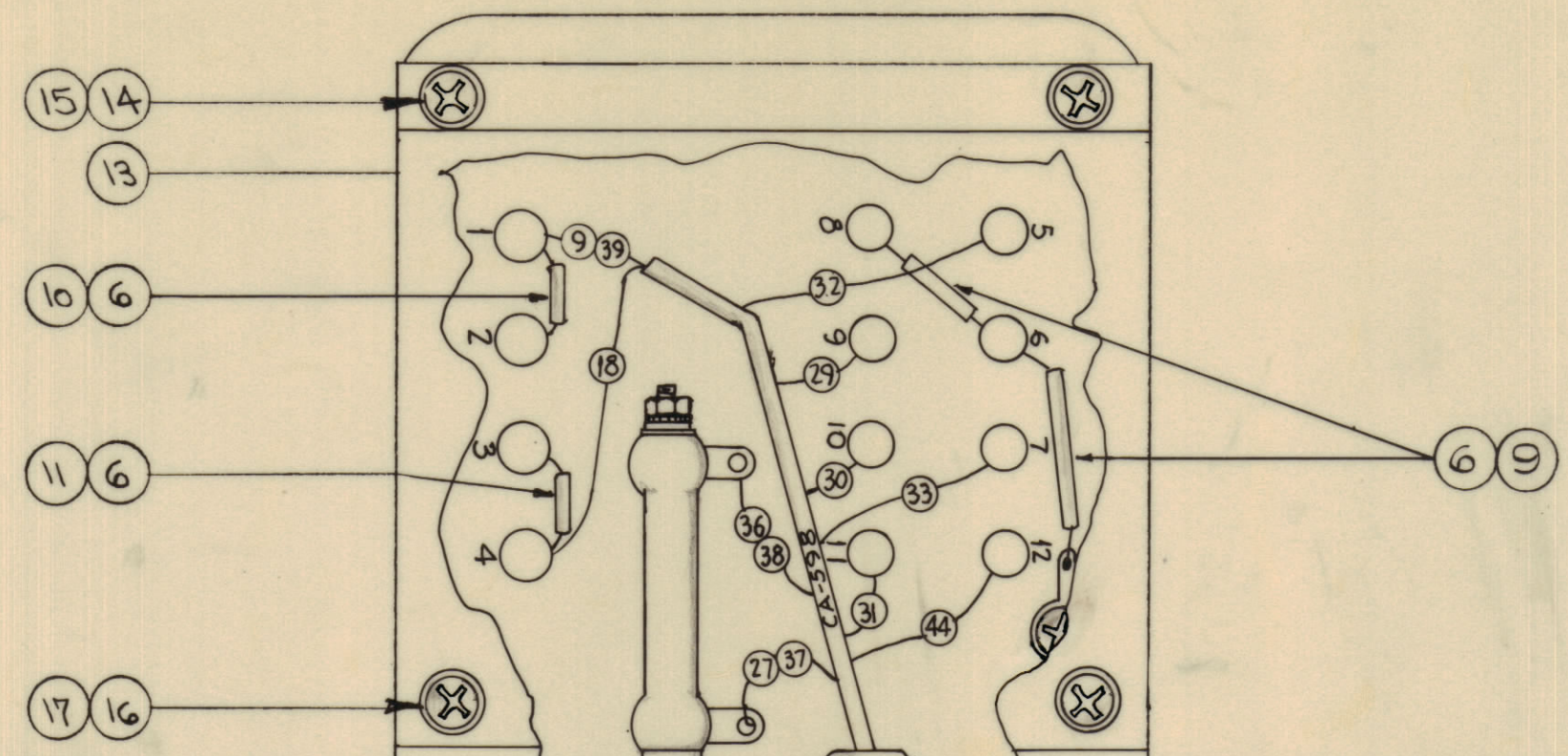
IF IT IS FOUND DESIRABLE TO CHANGE ANY TOLERANCE OR OTHER DETAIL SPECIFIED ON THIS DRAWING NOTIFY THE PURCHASER PROMPTLY.
 MAXIMUM ALLOWABLE TOLERANCES HAVE BEEN DETERMINED AND DEVIATIONS WILL BE CAUSE FOR REJECTION.
 REMOVE ALL BURRS AND SHARP EDGES

NOTE:
 1- THIS DWG. SHOWS THOSE COMPONENTS OR THAT HARDWARE NECESSARY FOR CABLE, JUMPER OR TERMINAL BOARD CONNECTIONS.
 2- LIPS HAVE BEEN OMITTED FOR CLARITY.
 3- WIRE NO'S. SHOWN CORRESPOND TO WIRE NO'S. ON CABLE DWGS.

NOTICE TO PERSONS RECEIVING THIS DRAWING

THE TECHNICAL MATERIEL CORPORATION claims proprietary right in the material disclosed herein. This drawing is issued in confidence for engineering information only and may not be reproduced or used to manufacture anything shown hereon without permission from THE TECHNICAL MATERIEL CORPORATION to the user. This drawing is loaned for mutual assistance and is subject to recall at any time.

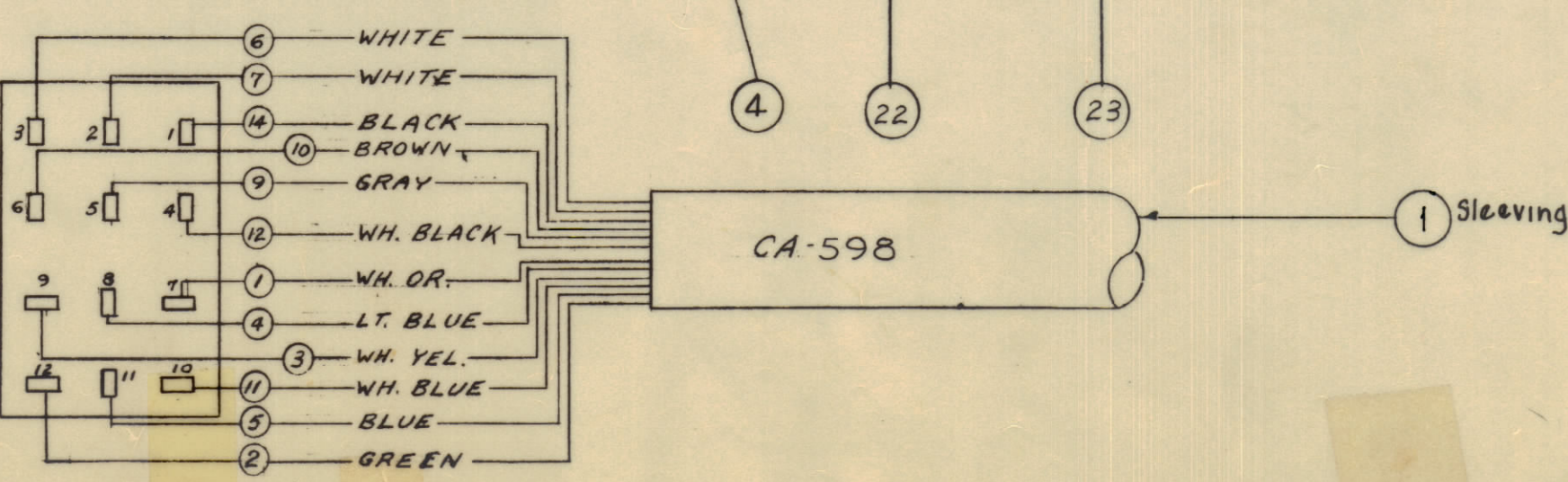
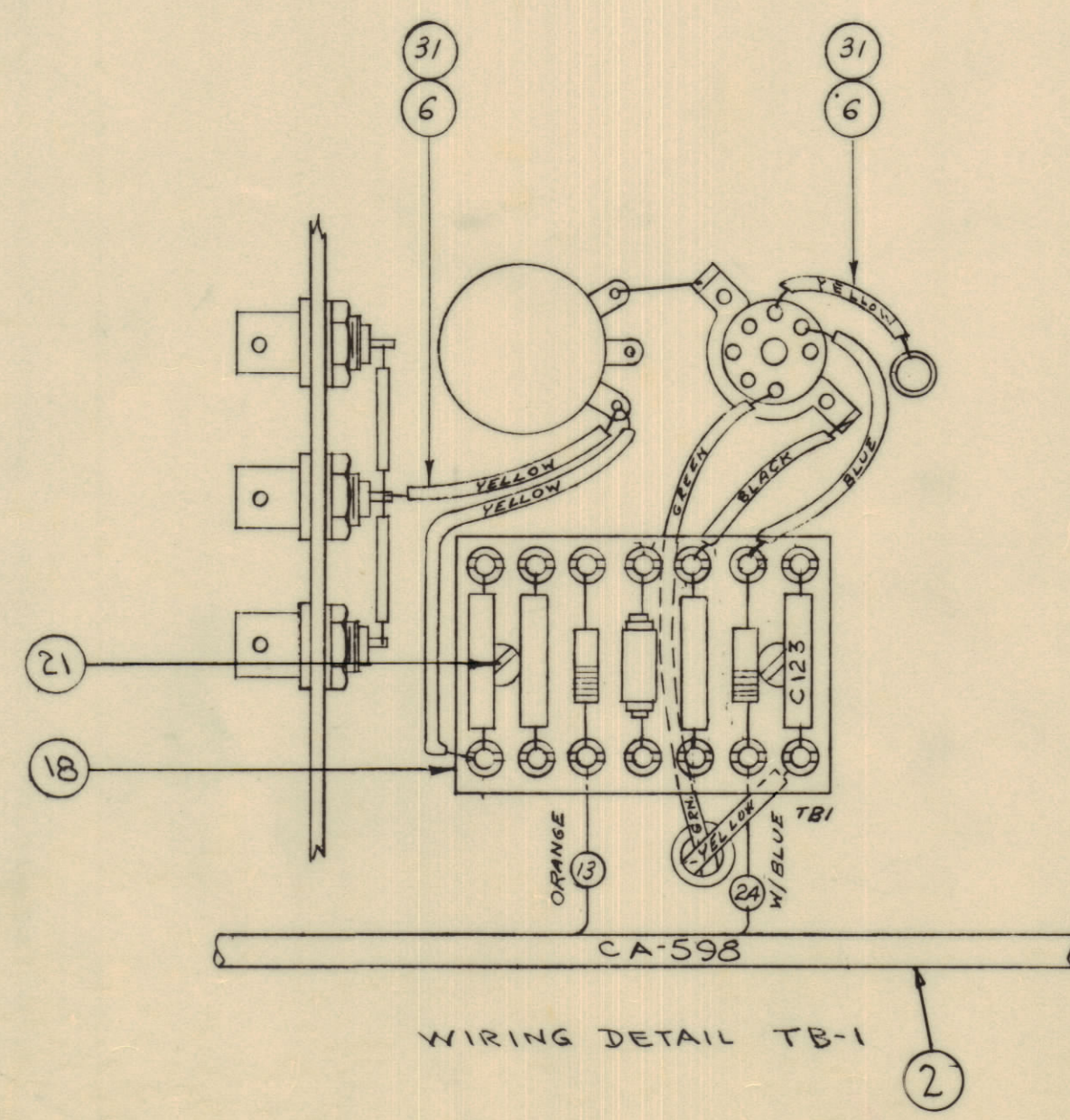
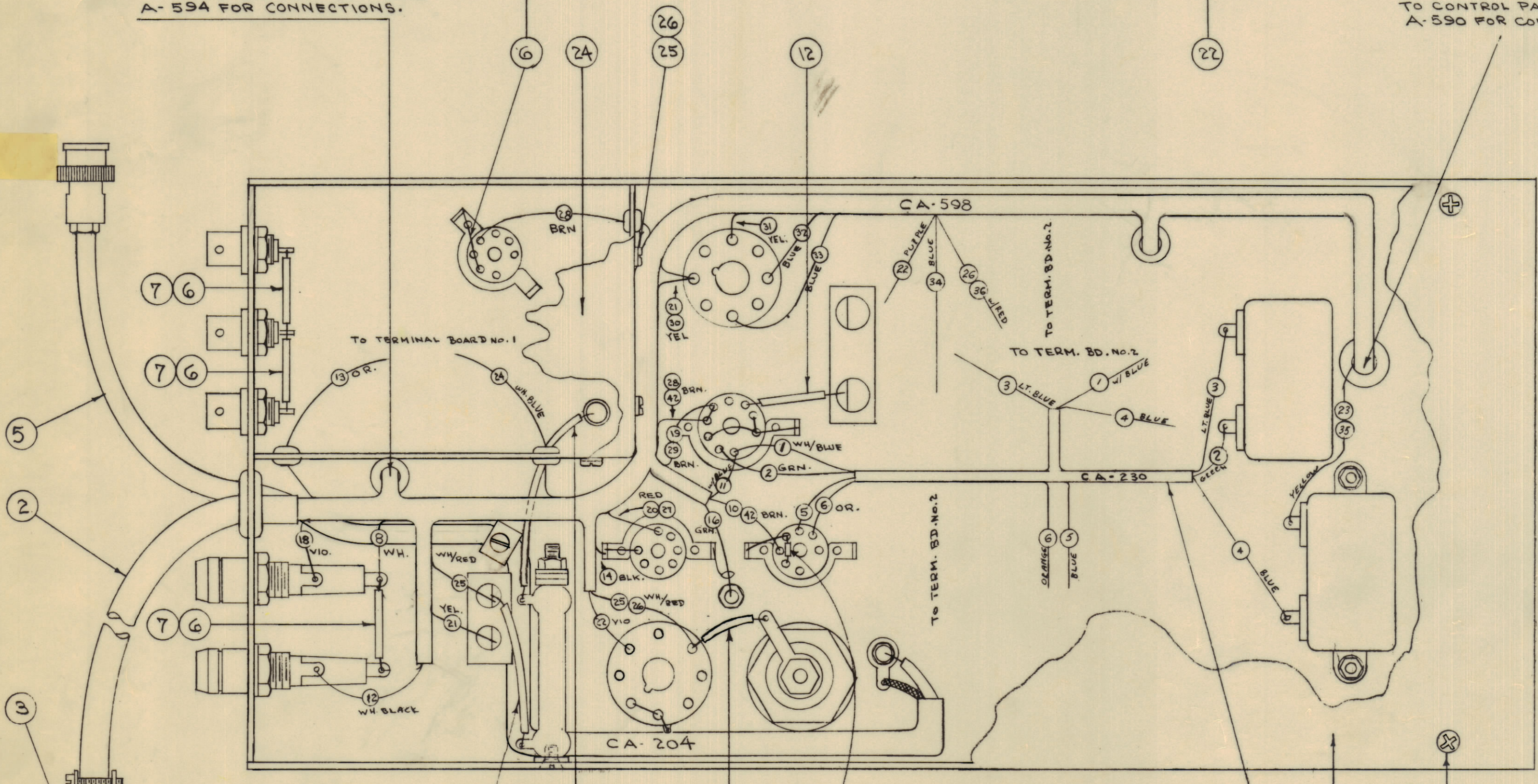
Property of:
 THE TECHNICAL MATERIEL CORPORATION
 MAMARONECK, NEW YORK



TO XTAL SWITCH SEE DWG A-594 FOR CONNECTIONS.

ALL UNSHIELDED JUMPERS

TO CONTROL PANEL, SEE DWG. A-590 FOR CONNECTIONS.



○ ITEM NUMBERS AS PER DWG AX344 SHEET 2
 ○ ITEM NUMBERS AS PER CABLE DWGS.(CA-598, CA-230)

REQ. ITEM	PART NO.	DESCRIPTION	SYMBOL
X 31	PX-104-2-022	INSULATED SLEEVING (YELLOW)	
3/4 30	MWC22(7)U92	CABLE, INSULATED. (WH. RED)	
5' 29	MWC22(7)U92	CABLE, INSULATED (WH. RED)	
X 28	BS-100	SOLDERS SOFT (ALL CONNECTIONS)	
1/2 27	PX-104-1-11B	INSULATION, SLEEVING (BLK.)	
4	LWE04MRN	WASHER, LOCK	
4	SCBP0440BN4	SCREW, MACHINE	
1	MS-300	COVER, T.B., PS.	
6	SCFP0440BN4	SCREW, MACHINE	
1	MS-288	COVER, BOTTOM	
2	SCFP0632BN6	SCREW, MACHINE	
2	SCBP0632BN6	" " " "	
1	A-920	TERM. BD. NO.2 ASSY	
1	A-927	" " " " " "	
4	LWE06MRN	WASHER, LOCK	
2	SCBP0632BN4	SCREW, MACHINE	
2	LWE10MRN	WASHER, LOCK	
2	SCBP1032BN6	SCREW, MACHINE	
1	MS-298	SHIELD, TRANSFORMER	
X 12	MWC22(7)U5	CABLE, INSULATED (GRN.)	
X 11	PX-104-9-022	INSULATION, SLEEVING (VIO.)	
X 10	PX-104-7-022	" " " (GREY)	
X 9	PX-104-1-022	" " " (BLK.)	
X 8	PX-104-3-022	" " " (RED)	
X 7	PX-104-5-022	" " " (BRN.)	
X 6	WL-100-7	WIRE, BUSS BAR 22 GA.	
1	CA-204	CABLE ASSY	
1	CA-230	" " " "	
1	3 PL-102-1	CONNECTOR, MALE	PI01
1	CA-598	CABLE ASSY.	
X 1	PX-100-1-330	INSULATION, SLEEVING (BLK.)	

ISSUE	ITEM	CHANGED FROM	DATE	EN. NO.	DRAWN	CHECKER	ENG. APP.
C	2	ADDED GREEN & BLACK LENS	11-29-44	17325	RME		
B	2	ITEM (14) WAS SCBP1032BN6	7-18-43	9576	AKL		
A	2	FACTORY CLASIFIED	2-22-42	7896			
A	1	SEE SHEET 1 OF 2, DIVISION "A"					

DRILL	PUNCH	COMMERCIAL STOCK	STOCK
SEE 54 1 OF 2	BUILD UP UPDATED	2-13-67	17810
D	D	2	17810

REQ. PER UNIT	MODEL	PROJECT NO.	ASSY. NO.	DATE
1	VOX-6			6-62
1	VOX-5			6-62

THE TECHNICAL MATERIEL CORP.
 MAMARONECK, NEW YORK

CABLE & TERM. BD. ASSY.

PS. CHASSIS

SEC 6-27-62

CHECKED: [Signature] DATE: [Date]

HEAT TREAT. SPEC. [Signature]

FINISH & SPEC. NO. [Signature]

SHEET 2 OF 2

AX-344 D