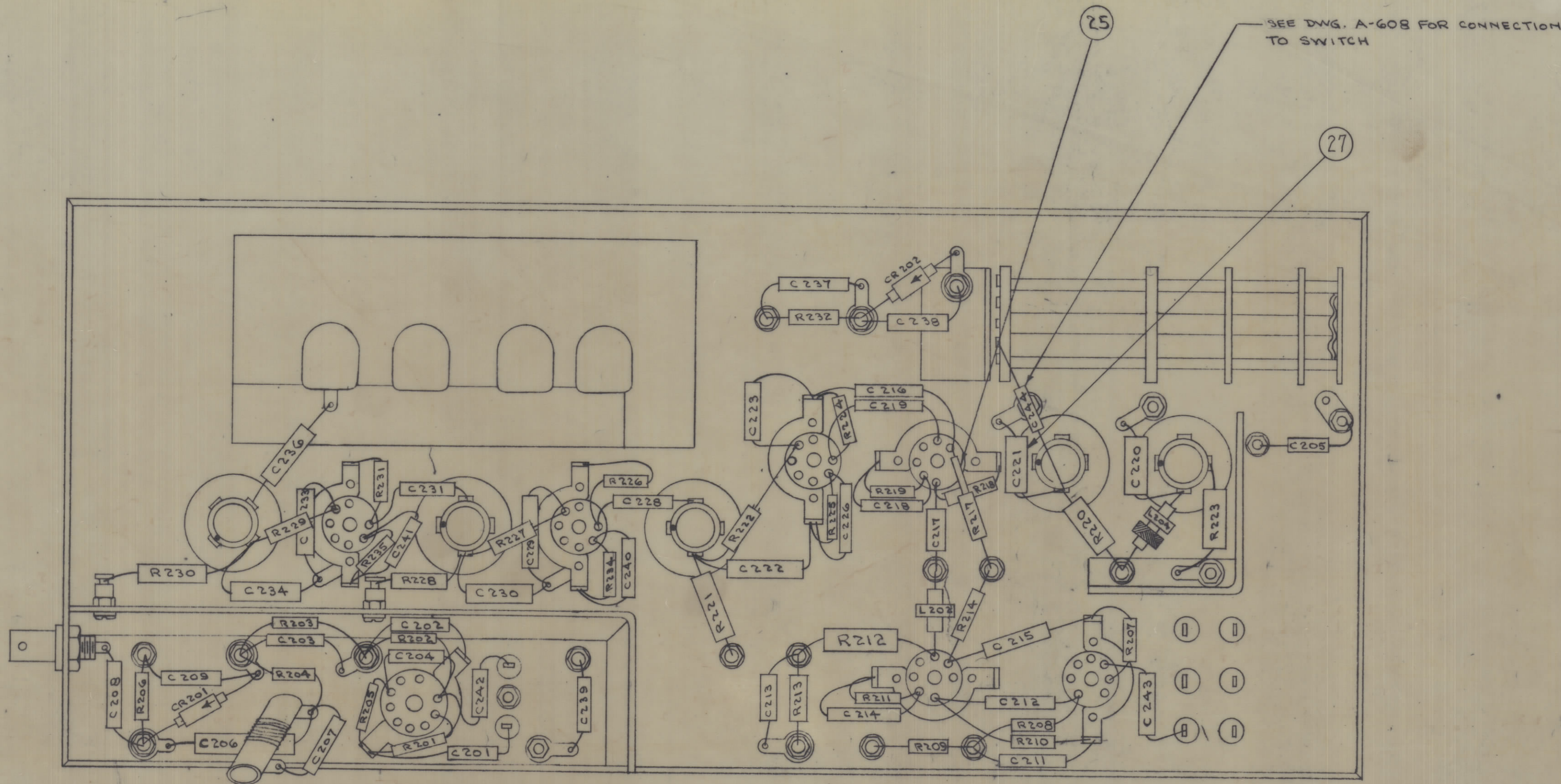


IF IT IS FOUND DESIRABLE TO CHANGE ANY TOLERANCE OR OTHER DETAIL SPECIFIED ON THIS DRAWING NOTIFY THE PURCHASER PROMPTLY.
 MAXIMUM ALLOWABLE TOLERANCES HAVE BEEN DETERMINED AND DEVIATIONS WILL BE CAUSE FOR REJECTION. REMOVE ALL BURRS AND SHARP EDGES.

NOTICE TO PERSONS RECEIVING THIS DRAWING

THE TECHNICAL MATERIEL CORPORATION claims proprietary right in the material disclosed hereon. This drawing is issued in confidence for engineering information only and may not be reproduced or used to manufacture anything shown hereon without permission from THE TECHNICAL MATERIEL CORPORATION to the user. This drawing is loaned for mutual assistance and is subject to recall at any time.

Property of:
 THE TECHNICAL MATERIEL CORPORATION
 MAMARONECK, NEW YORK



THIS DRAWING SHOWS ONLY THAT HARDWARE NECESSARY FOR COMPONENT CONNECTIONS.
 CHASSIS LIPS HAVE BEEN OMITTED FOR CLARITY.

AX-345 F

R 220-28-30

R 211-19-25-34-35

R 203-5-22-27

R 202-10-14-18-24-31

C 205-6-9-20-22-30-34

C 202-3-4-8-11-12-13-14-15-16-17-18-19-23-26-28-29-31-33-36-37-38-39-40-41-42-43

REQ. ITEM	PART NO.	DESCRIPTION	SYMBOL	
1	27	CM-100-6	CAPACITOR, FIXED	C227
X	26	BS-100	SOLDER, SOFT (CONNECTIONS)	
X	25	PX-104-6-022	INSULATION, SLEEVING (BWE)	
	24		DELETED	
	23		DELETED	
2	22	RC20GF243J	RESISTOR, FIXED	R229
1	21	RC20GF383J	RESISTOR, FIXED	R226
1	20	RC42GF681J	RESISTOR, FIXED	R223
1	19	RC42GF222J	RESISTOR, FIXED	R221
3	18	RC42GF122J	RESISTOR, FIXED	
1	17	RC20GF102J	RESISTOR, FIXED	R217
1	16	RC32GF102J	RESISTOR, FIXED	R213
1	15	RC42GF102J	RESISTOR, FIXED	R212
5	14	RC20GF471J	RESISTOR, FIXED	
1	13	RC42GF823J	RESISTOR, FIXED	R209
1	12	RC20GF103J	RESISTOR, FIXED	R208
1	11	RC20GF123J	RESISTOR, FIXED	R206
1	10	RC20GF382J	RESISTOR, FIXED	R204
4	9	RC20GF473J	RESISTOR, FIXED	
6	8	RC20GF104J	RESISTOR, FIXED	
2	7	RC20GF474J	RESISTOR, FIXED	R201
1	6	CL-100-5	COIL, RF	L204
2	5	1N-34	DIODE, GERMANIUM	CR201
1	4	CM20C151J	CAPACITOR, FIXED	C207
7	3	CM35F103F03	CAPACITOR, FIXED	
2	2	CM20F102603	CAPACITOR, FIXED	
1	1	A-244	COIL	L202

ISSUE	ITEM	CHANGED FROM	DATE	CR. NO.	DRAFTS	CHECKER	ENG. APP.
F		B/U UPDATED; SEE SH124	8-3-67	(781)	U40		
E		SEE SHEET 2 OF 5	7-24-67	16197	H44		
D		SEE SHEET 5 OF 5 REV'D	12-7-66	12769	508		
C		SEE SHEET 5 OF 5	9-25-63	7776	40		
B		ITEM (6) WAS RC30GF102K	7-21-63	9579	AK		
A		ITEM 27 ADDED, SYM C221	7-11-62	7207	AK		
		ITEM (2) WAS B Pkg.					

1	VOX-345,6			6-26-62
REQ. PER UNIT	MODEL	PROJECT NO.	ASBY. NO.	DATE

THE TECHNICAL MATERIEL CORP.
 MAMARONECK, NEW YORK
 R.F. CHASSIS COMPONENT ASSY.
 VOX

TYPE & TEMPER
 DRAWN: D. M. M...
 ELEC. DES. APP.
 CHECKED: [Signature]
 FINAL APPROVAL: [Signature]

SHEET 3 OF 5 AX-345 F