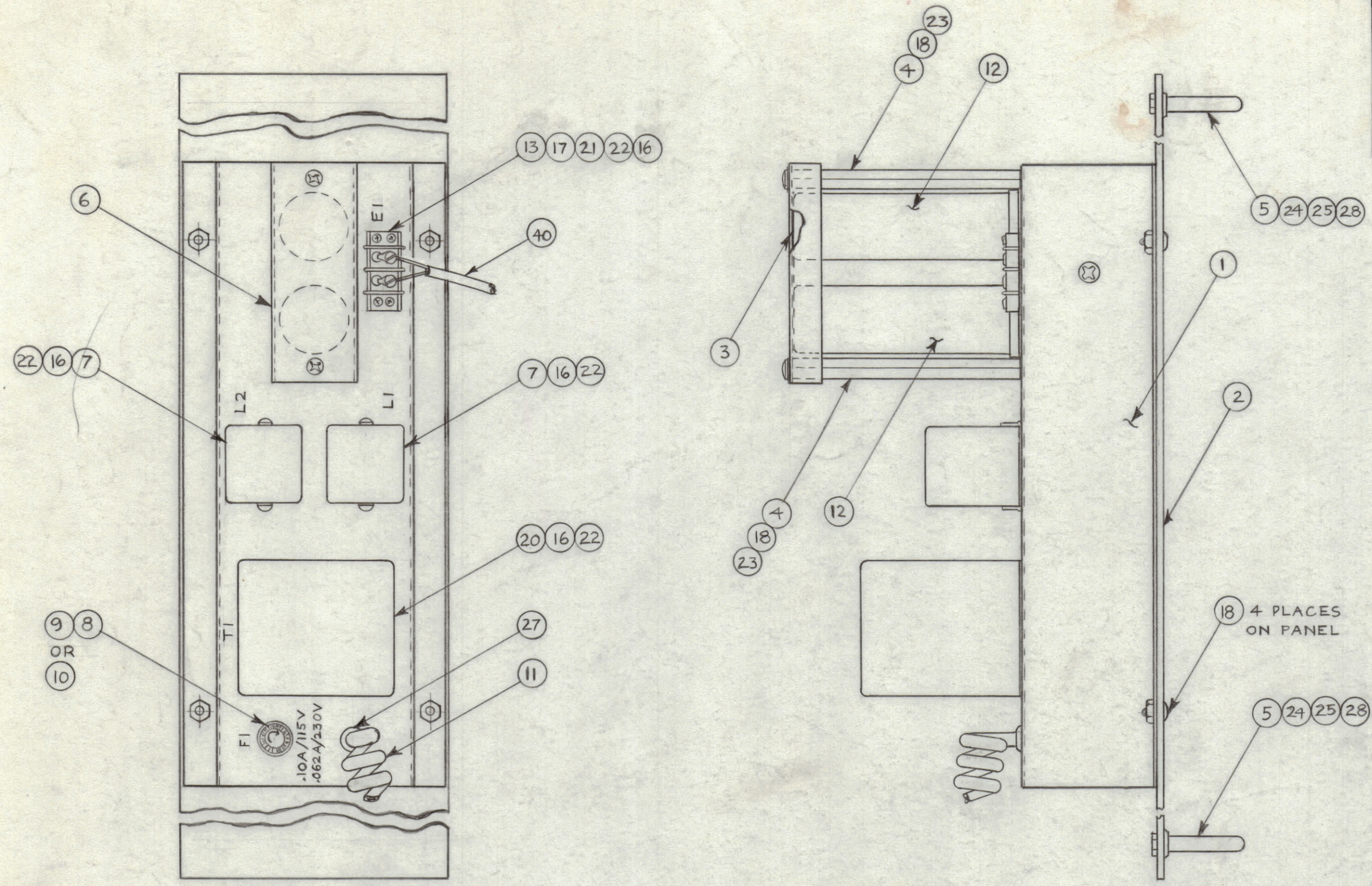
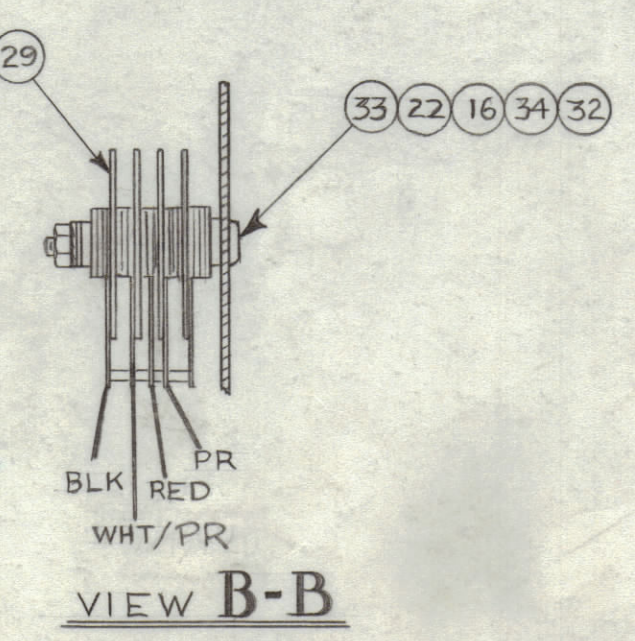
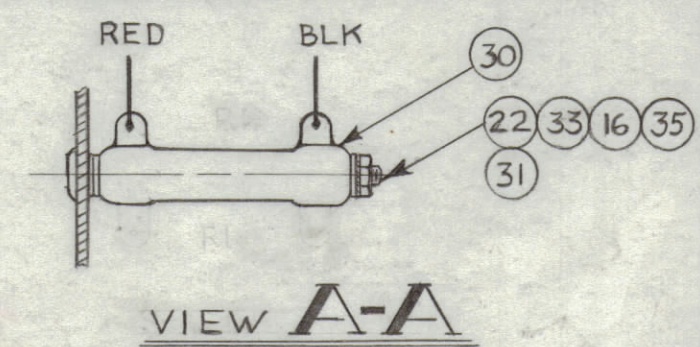
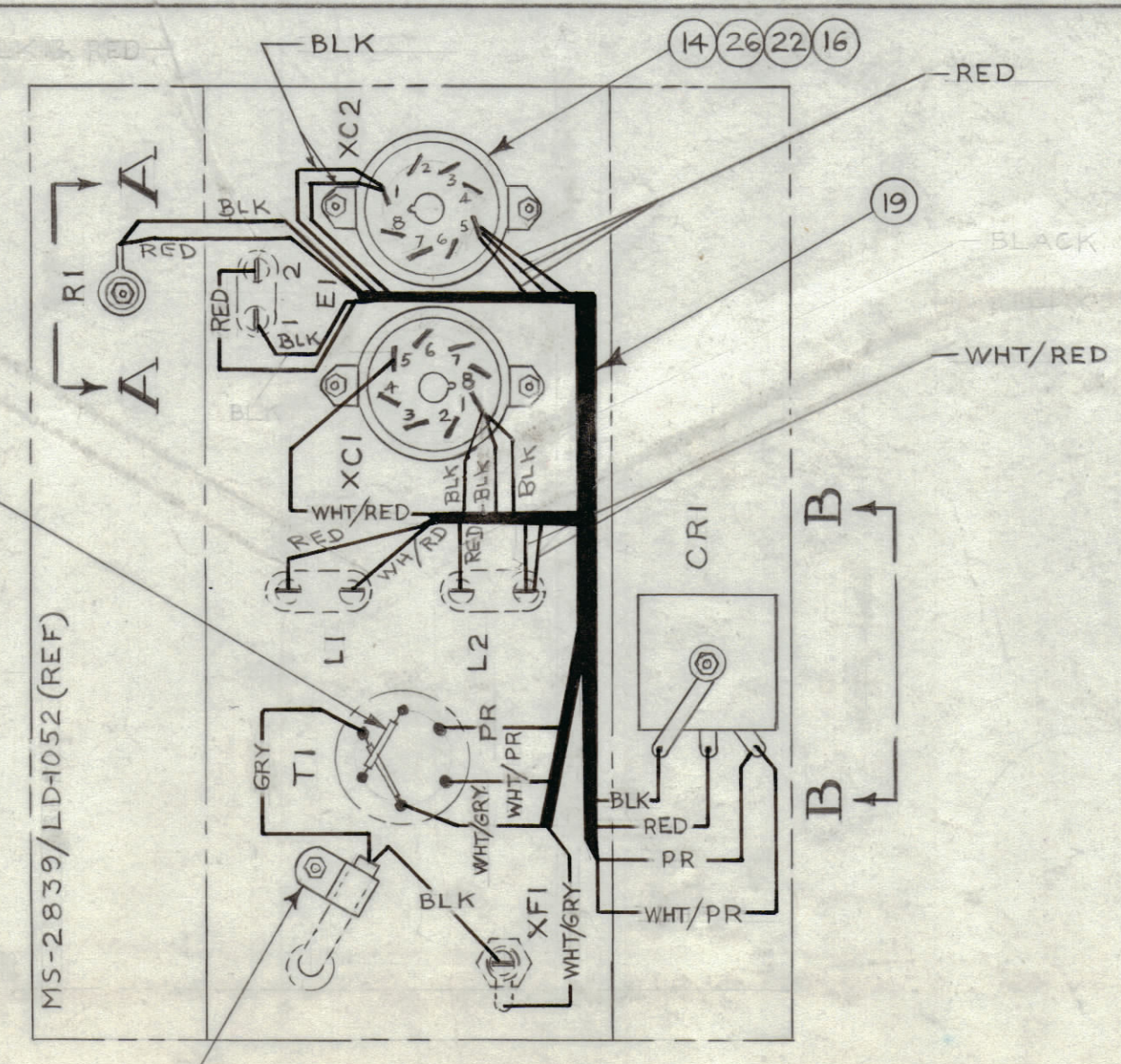


REVISIONS						
ZONE	SYM	DESCRIPTION	DATE	E.M.N. NO.	DRAFT	CHKD APPD
A		ITEM 4 WAS TEO832AE7H	5-4-66	16205	WJO	Q1288



CHASSIS ASSY

WIRING ASSY



NOTES:
 1. ITEM 15 TO BE MOUNTED ON STUD OF ITEM 20.
 2. ITEM 38 TO BE 7/16 LG EACH.

SEE NOTE 2

MS-2839/LD-052 (REF)

SEE NOTE 1

NOTES

REQ'D.	ITEM	PART NUMBER	DESCRIPTION	SYMBOL
1	40	CA-676-1-90	CABLE, DC POWER	
-	39	WL-100-6	WIRE, BUSS, #24	
2	38	PX-104-1-.034	SLEEVING, SIZE 20 7/16 LG	BLACK
-	37	BS-100	SOLDER, SOFT	
-	36	CD-101-1-MW	CORD, LACING	BLACK
1	35	SCBP0632BN36	SCREW, MACHINE	
1	34	SCBP0632BN16	SCREW, MACHINE	
4	33	FWO6HBN	WASHER, FLAT	
2	32	WA-101-3	WASHER, FIBER, SHOULDER	
2	31	WA-102-6	WASHER, FIBER, SHOULDER	
1	30	RW-109-7	RESISTOR, FIXED, WIREWOUND	R1
1	29	RX-103	RECTIFIER, SELENIUM	CRI
4	28	SCBPIO32BN12	SCREW, MACHINE	
1	27	EY-102-13	GROMMET, ELASTIC	
4	26	SCBP0632BN5	SCREW, MACHINE	
4	25	LWEIOMRN	WASHER, LOCK, EXT.	
4	24	CU-139-2B	FERRULE	
4	23	LWE08MRN	WASHER, LOCK, EXT.	
18	22	LWE06MRN	WASHER, LOCK, EXT.	
4	21	SCBP0632BN8	SCREW, MACHINE	
1	20	TF-179	TRANSFORMER, POWER	TI
1	19	CA-672	WIRING HARNESS, BRANCHED	
8	18	SCBP0832BN8	SCREW, MACHINE	
2	17	MS-154-1	PLATE, STRADDLE	
18	16	NTH0632BN8	NUT, HEX	
1	15	CU102-3	CLAMP, PLASTIC	
2	14	TS-101-PO1	SOCKET, OCTAL	XCI, 2
1	13	TM-100-2	TERMINAL BOARD, BARRIER	EI
2	12	CE51C152F	CAPACITOR, FIXED, ELECTROLYTIC	CI, 2
1	11	CA-575-1	CABLE, AC, COILED	
1	10	FU-102-.062	FUSE, CARTRIDGE, 1/16 AMP	FI
1	9	FU-102-.100	FUSE, CARTRIDGE, 1/10 AMP	FI
1	8	FH-100-3	HOLDER, FUSE	XFI
2	7	CL-132	REACTOR, FILTER	LI, 2
1	6	MS-1198	BRACKET, CAPACITOR	
2	5	HA-102-2BN	HANDLE	
2	4	TEO832AE13H	SPACER, THREADED	
1	3	RY-123-1	SHEET, RUBBER, 1/16 THK	
1	2	MS-2840	PANEL, FRONT	
1	1	LD-1052/MS-2839	CHASSIS, MAIN	

I. JOHNSON		LIST OF MATERIAL			
MATERIAL	---	THE TECHNICAL MATERIEL CORP. MAMARONECK, NEW YORK			
FINISH	---	TITLE POWER SUPPLY, 12 VDC			
UNLESS OTHERWISE SPECIFIED DIMENSIONS ARE IN INCHES AND INCLUDE CHEMICALLY APPLIED OR PLATED FINISHES	DRAWN: <i>[Signature]</i>	DATE: 3/12/63	FINAL APPROVAL: <i>[Signature]</i>	DATE:	
DECIMALS .X ± .03 .XX ± .01 .XXX ± .005	TOLERANCES	ANGLES ± 1/64 ± 0° 30'	ELECT. DES. <i>[Signature]</i>	DATE: 3/27/63	
THE CONTENTS OF THIS DRAWING ARE THE EXCLUSIVE PROPERTY OF THE TECHNICAL MATERIEL CORP. ITS UNAUTHORIZED USE OR REPRODUCTION IN WHOLE OR IN PART IS STRICTLY FORBIDDEN.		MECH. DES. <i>[Signature]</i>		DATE: 3/29/63	
		SHEET		REV. LTR.	

AX-347

AX-347 A