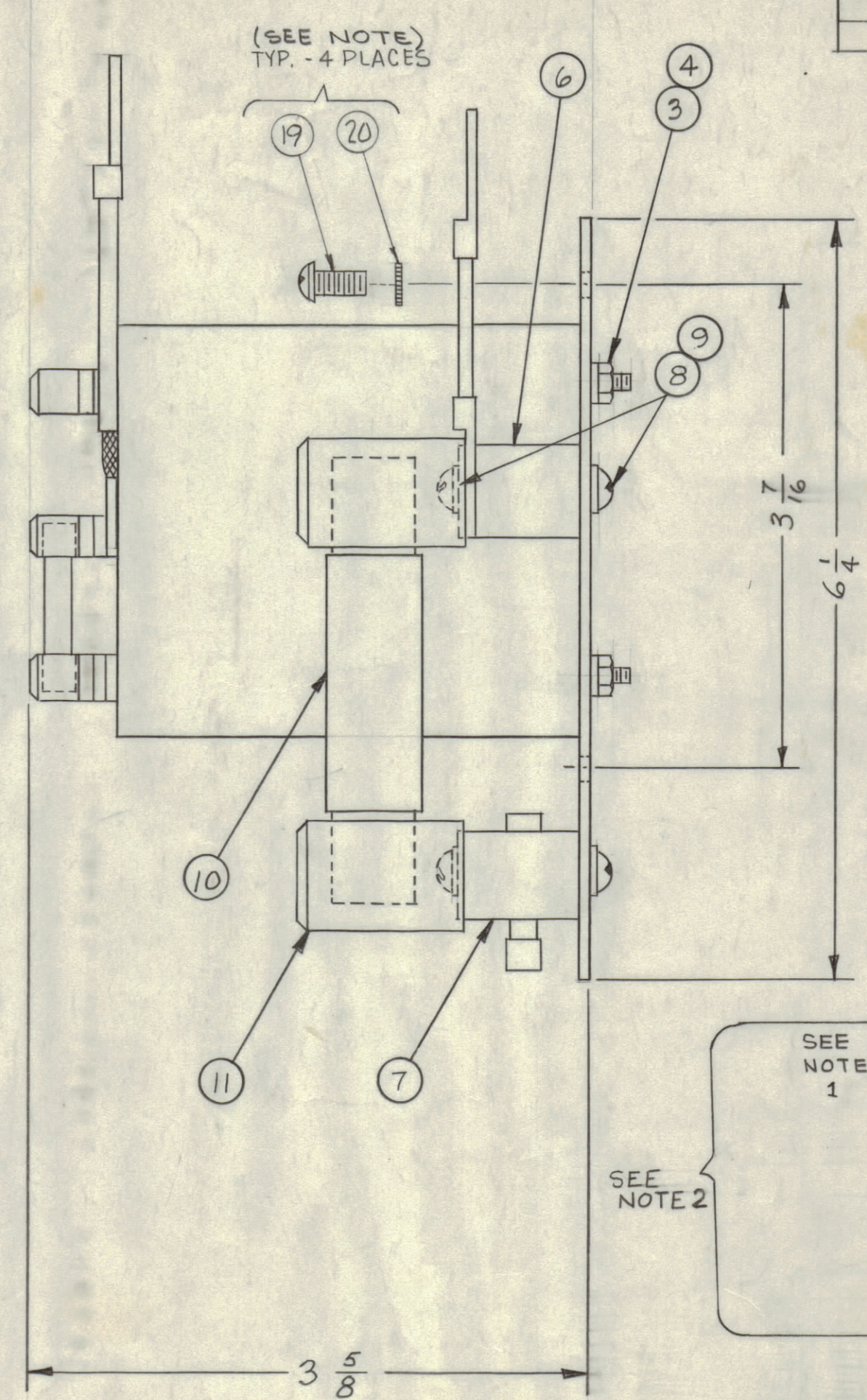
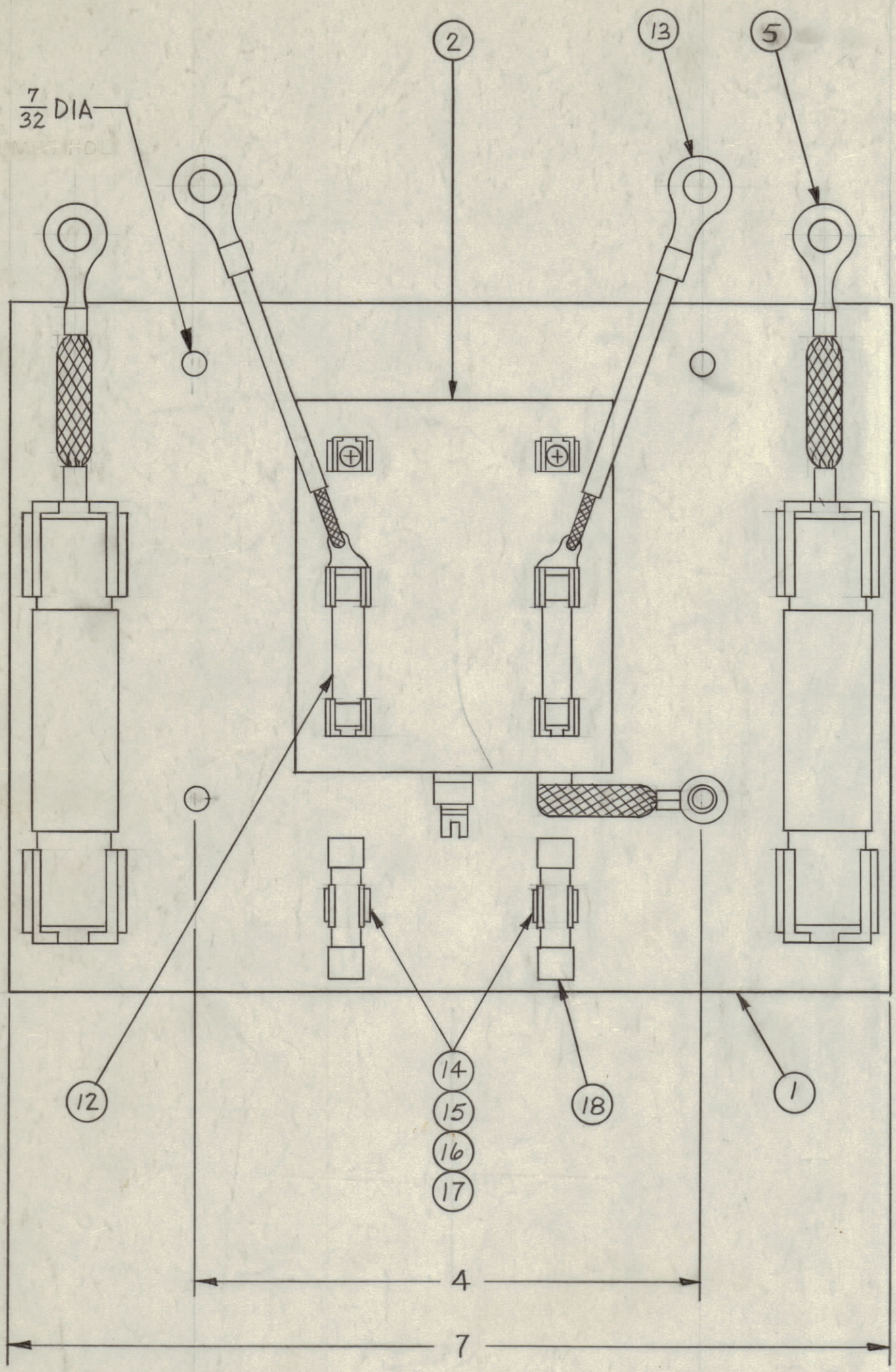


REVISIONS							
ZONE	SYM	DESCRIPTION	DATE	E.M.N. NO.	DRAFT	CHKD	APPD
C2	A	ITEM(14) WAS FC-102-1-XX-C; ITEM(7) WAS PM-376	2-2-63	8165			
B2	B	ITEM(3) WAS LWEO832MRN, AX-381-5 ADDED TO CHART	3-22-63	8613			
F2	B	AX-381-6 & 17 USED ON ADDED TO CHART	5-13-63	9023			
E2	C	AX-381-7 ADDED TO CHART	5-13-63	9023			
#	D	AX-381-7 WAS TR-147, AX-381-8 ADDED NOTE 2 & SEE NOTE 2, ADDED, ITEM 5 WAS A1149, ITEM 12 WAS A1150	6/5/64	11494	A.M.	@	MNH
	E	ITEM 5 WAS "-23"-, IT. 13 WAS "-53-"	1/24/66	15623	HLA	JCB	MNH
	F	ON CHART COLUMNS METAL CASE & FIBER CAS. ADD	8-17-64		G.D.L.		
	G	ADDED 381-9, 381-10	2/18/94				Q&B



TMC. PART NO.	ITEM #2	USED ON	METAL CASE ITEM #1	FIBER CASE ITEM #1
AX-381-1	TR-088	RAC-34	MS 742	
AX-381-2	TR-092	RAC-37		
AX-381-3	TR-130	RAC-30		MS 7213
AX-381-4	TR-132	RAC-30A-32		
AX-381-5	TR-177	RAC-41		
AX-381-6	TR-065	RAC-43		
AX-381-7	TR-174	RAC-42		
AX-381-8	NONE REQD	KIT-185	MS 742	
AX-381-9	TR 216	RAC		
AX-381-10	TR223	RAC		

REQ'D.	ITEM	PART NUMBER	DESCRIPTION	SYMBOL
4	20	LWEO8MRN	WASHER, LOCK	
4	19	SCBP0832BN6	SCREW, MACHINE	
2	18	FU-100-4	FUSE, 4A	
2	17	LWEO4MRN	WASHER, LOCK, SPLIT	
2	16	NTH0440BN6	NUT, HEX	
2	15	SCRPO440BN6	SCREW MACHINE	
2	14	FC-102-1-XX-N	FUSE CLIP	
2	13	CA412-56-3.75	LEAD, ELECTRICAL	
2	12	PM-393	BUSS ROD	
4	11	FH-102	FUSE CLIP	
2	10	SW-176	LIGHTNING ARRESTOR	
8	9	SCBPI032BN6	SCREW, MACHINE	
8	8	LWE10MRN	WASHER, LOCK, EXTERNAL	
2	7	TE-1032BN62R	SPACER, THREADED	
2	6	NS3W0306	INSULATOR, STANDOFF	
2	5	CA409-45-1.50	LEAD, ELECTRICAL	
4	4	NTH0832BN10	NUT, HEX	
4	3	LWEO8MRN	WASHER, LOCK	
1	2	SEE CHART	TRANSFORMER, RF	
1	1	SEE CHART	MOUNTING PLATE	

IRV JOHNSON LIST OF MATERIAL			
MATERIAL		THE TECHNICAL MATERIEL CORP. MAMARONECK, NEW YORK	
FINISH		TITLE TRANSFORMER & MOUNTING PLATE SUB-ASSY	
DRAWN M.J. TANTILLO	DATE 9-19-62	FINAL APPROVAL [Signature]	DATE
CHECKED [Signature]	DATE 9-20-62	AX-381	
ELECT. DES. [Signature]	DATE 9-20-62	SHEET	
MECH. DES. [Signature]	DATE	REV. LTR.	

NOTE:  
 1- ITEMS 19 & 20 SUPPLIED AS LOOSE ITEMS.  
 2- ITEMS 2, 3, 4, 12 THRU 20 OMITTED FOR AX 381-8 (KIT-185)

NOTES

QTY./UNIT	SEE CHART	MODEL USED ON	A-3082	ASS'Y. NO.
SCALE	CODE			

THE CONTENTS OF THIS DRAWING ARE THE EXCLUSIVE PROPERTY OF THE TECHNICAL MATERIEL CORP. ITS UNAUTHORIZED USE OR REPRODUCTION IN WHOLE OR IN PART IS STRICTLY FORBIDDEN.

NOTICE TO PERSONS RECEIVING THIS DRAWING  
 THE TECHNICAL MATERIEL CORPORATION claims proprietary right in the material disclosed hereon. This drawing is issued in confidence for engineering information only and may not be reproduced or used to manufacture anything shown hereon without permission from THE TECHNICAL MATERIEL CORPORATION to the user. This drawing is loaned for mutual assistance and is subject to recall at any time.

Property of:  
 THE TECHNICAL MATERIEL CORPORATION  
 MAMARONECK, NEW YORK