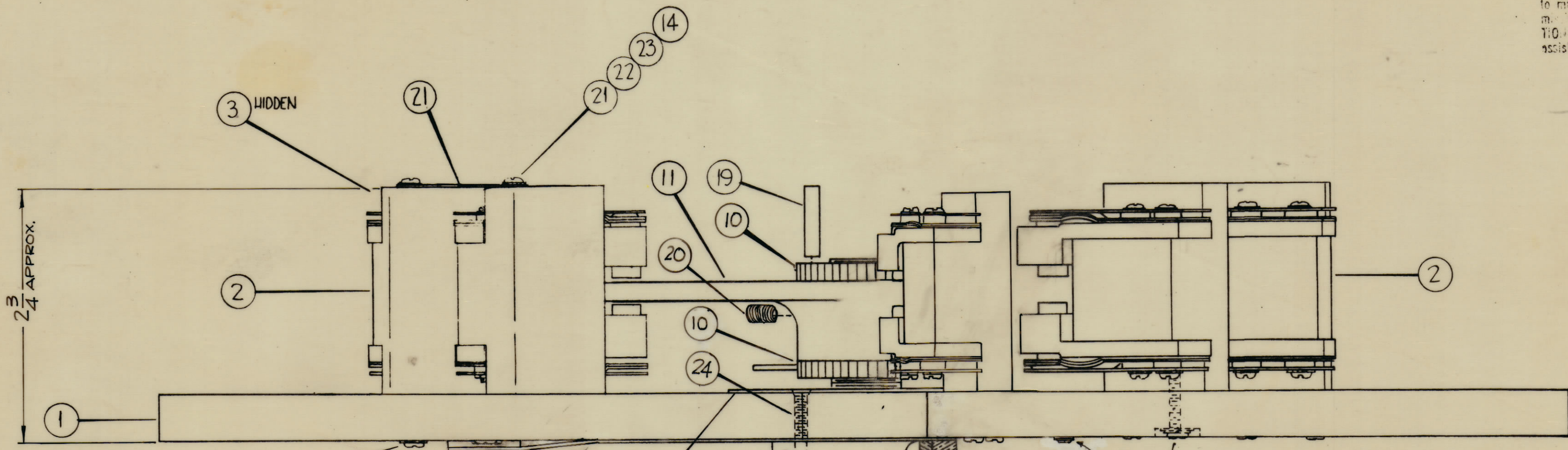


NOTICE TO PERSONS RECEIVING THIS DRAWING

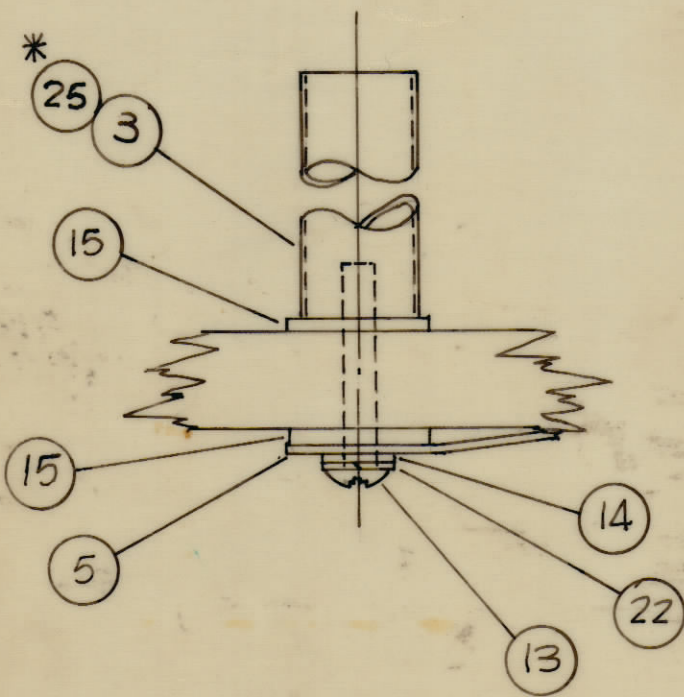
THE TECHNICAL MATERIEL CORPORATION claims proprietary right in the material declared herein. This drawing is issued in confidence for engineering information only and is not to be reproduced or used for manufacturing purposes without permission from THE TECHNICAL MATERIEL CORPORATION to the user. This drawing is loaned for mutual assistance and is subject to recall at any time.

Property of:
THE TECHNICAL MATERIEL CORPORATION
MAMARONECK, NEW YORK

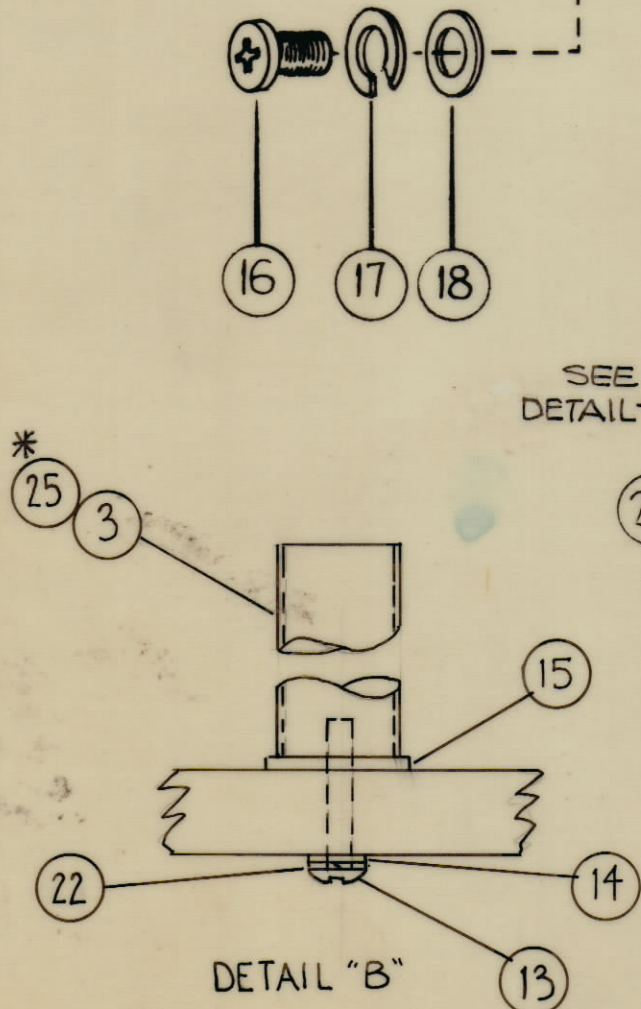


SEE DETAIL "A"

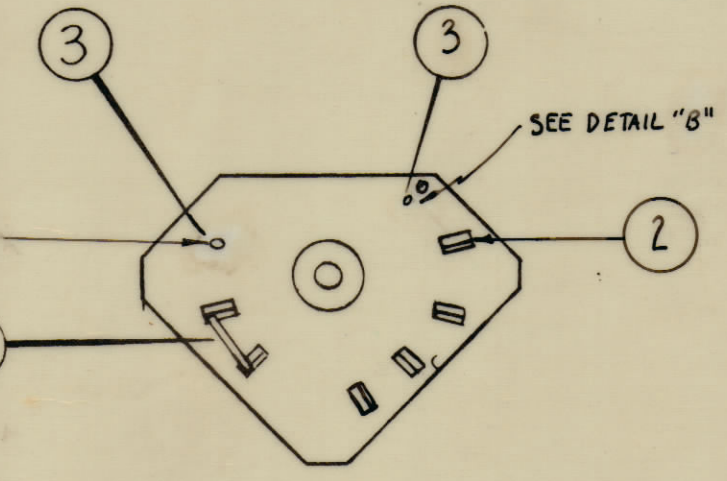
SEE DETAIL "B"



DETAIL - A



DETAIL "B"



VIEW SHOWS POSITIONING OF POSTS

NOTE:
* ITEM 25 2 1/4" LONG

REQ.	ITEM	PART NO.	DESCRIPTION	SYMBOL
1	26	WA-136-3	WASHER, SPRING TENSION	
4 1/2	25	PX-370-60-7	Sleeving, Teflon	
3	24	SCFP0832BP14	Screw, Machine, Flat Head	
2	23	SCBP1032BP6	Screw, Machine, Phillips	
16	22	LWS10MRP	Lockwasher, Split	
1	21	MS-202-22-3.250	Strap	
2	20	SLHC1032SP6	Screw, Set	
1	19	KY-103-3-0.750SS	Key, Flat, 1/8 x 3/16 x 3/4 Lg.	
1	18	FW25HBP	Washer, Flat	
1	17	LWS25MRP	Lockwasher, Split	
1	16	SCBP2520BP8	Bolt, Machine	
3	15	GA-140-3T8	Washer, NM, Teflon	
16	14	FW10HBP	Washer, Flat	
2	13	SCBP1032BP22	Screw, Machine	
12	12	SCBP1032BP16	Screw, Machine, Phillips	
1	11	RO-103	R6tor, Bandswitch	E-7327
2	10	NT-131	Nut, Rotor Adjust	
1	9	DM-640	Hub, Shaft, Top	
1	8	FD-180	Strap, Connecting, Rotor	
1	7	BB-123-1	Bearing Shaft	
1	6	PM-587	Holder, Bearing	
1	5	MS-2313	Strap, Rotor Shorting	
1	4	MS-2195	Plate, Rotor Contact	
2	3	TE1032APT4R	Spacer, Common Contact	E7334, 35
6	2	AX-339	Contact Ass'y.	
1	1	WS-132	Wafer "L" Section	E7328

E7322, E7323, E7324
E7325, E7326, E7333

SYM	ZONE	DESCRIPTION	DATE	CH. NO.	DRAFTS	CHECKER	ENG. APP.
B		IT. 25 PX-370-50-7 WAS PX 370-59-7	2-18-69	19277	GE	HO	FB
A		IT. 26 ADDED TO BM & PICTORIAL	8-27-64	12246	JTB		
O		ORIGINAL RELEASE FOR PRODUCTION	3-3-64		AM.		

UNLESS OTHERWISE SPECIFIED:
DIMENSIONS ARE IN INCHES
TOLERANCES ON
FRACTIONS ± 1/64 DECIMALS ± .005 ANGLES ± 1/2°
SCALE: **CODE A**
MAXIMUM ALLOWABLE TOLERANCES HAVE BEEN DETERMINED AND ANY DEVIATIONS WILL BE CAUSE FOR REJECTION. REMOVE ALL BURRS & SHARP EDGES

REQ. PER UNIT	MODEL	SECTION	ASS'Y. NO.	DATE
1	GPT-40K() 4	A5-125	AX-459	12-9-63

REQ.		PART NO.		BUDETTI		DESCRIPTION		SYMBOL	
STOCK SIZE									
MATERIAL									
TYPE & TEMPER									
HEAT TREAT. SPEC.									
FINISH & SPEC. NO.									
DRAWN		SRG		LWG 12-16-63		RAC		3/1/64	
CHECKED		RB							
ELEC. DES. APP.								AX-458	
MECH. DES. APP.								B	
SHEET								OF	