

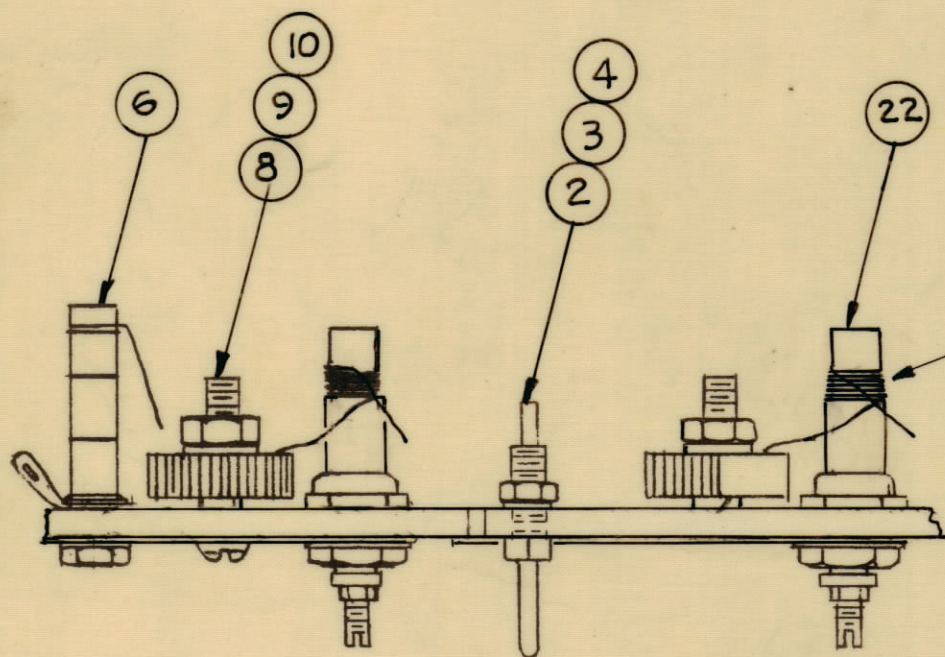
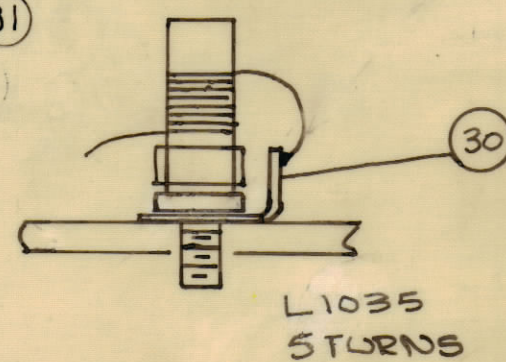
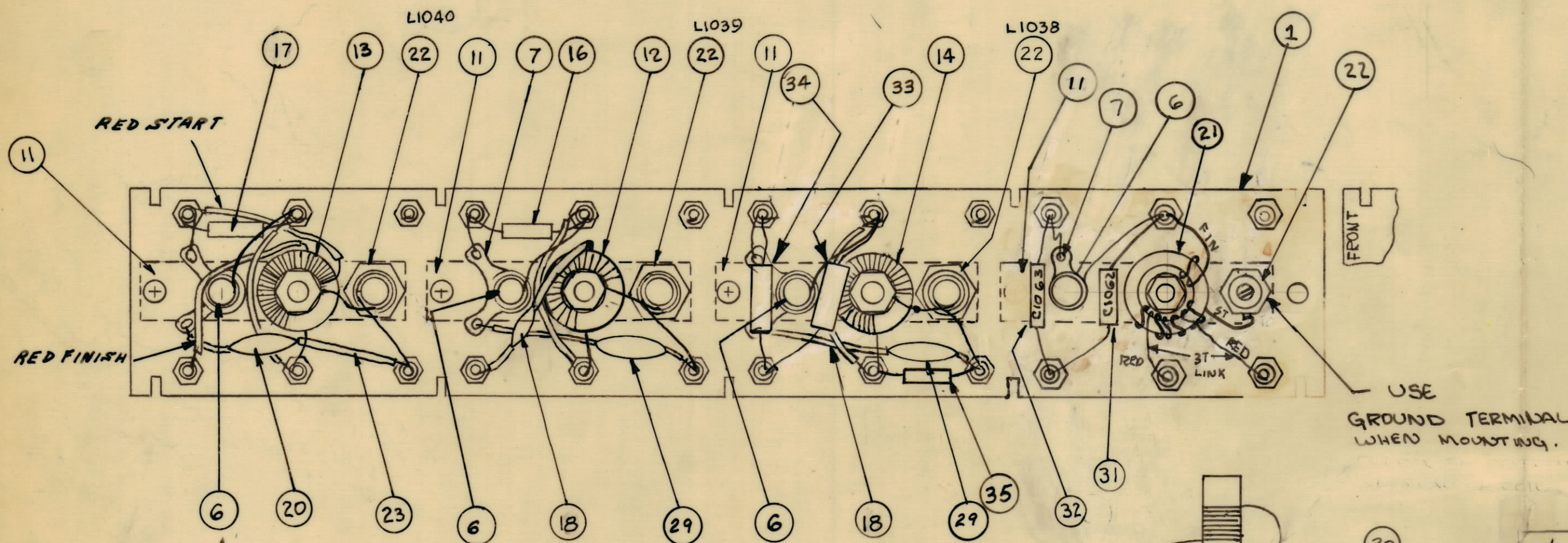
**NOTICE TO PERSONS RECEIVING THIS DRAWING**

THE TECHNICAL MATERIEL CORPORATION claims proprietary right in the material disclosed hereon. This drawing is issued in confidence for engineering information only and may not be reproduced or used to manufacture anything shown hereon without permission from THE TECHNICAL MATERIEL CORPORATION to the user. This drawing is loaned for mutual assistance and is subject to recall at any time.

Property of:

THE TECHNICAL MATERIEL CORPORATION  
MAMARONECK, NEW YORK

REVISIONS						
ZONE	SYM	DESCRIPTION	DATE	E.M.N. NO.	DRAFT	CHKD
	X	EXPER. RELEASE	2-23-65		G.D.L.	
	XI	COMPLETELY REVISED	3-17-65		G.D.L.	
	Ø	ORIGINAL RELEASE FOR PRODUCTION	3-24-65		G.D.L.	
	A	IT 14, L1038, IT 13, L1040, IT 12, L1039 CALLOUTS ADDED	4/9/65	14434	D.V.V.	
	B	FICTORIAL CLARIFIED. IT 29 ADDED	8-13-65	14554	D.V.V.	
	C	COMPLETELY REVISED	8/24/65	14712	D.V.V.	
	D	IT 33, 34, 35 ADDED. IT 17 QTY. WAS 2 C1138 DELE. IT 18 QTY. WAS 2 C1127 DELETED. IT 29 SYM LMS01011	10/14/65	14914	D.V.V.	
	E	IN REVISION BLK C1127 WAS C1136	11/2/65	15084	D.V.V.	



WIND 5 TURNS AS SHOWN TO FORM COIL. COAT COIL WITH ITEM 26 GL102. TYPICAL FOR L1038, L1039 & L1040, L1035

C1135  
C1137  
C1140  
C1144

REQ'D.	ITEM	PART NUMBER	DESCRIPTION	SYMBOL
1	35	RC20GF183J	RESISTOR	R1056
1	34	CM15F161G03	CAPACITOR	C1138
1	33	CM15C510G03	CAPACITOR	C1136
1	32	CM15F131G03	CAPACITOR	C1063
1	31	CM15C750G03	CAPACITOR	C1062
1	30	TE104-4	TERMINAL, LUG	
2	29	CC100-24	CAPACITOR, FIXED CER. .02MF	C1128C1034
2	28	DELETED		
1	27	DELETED		
X	26	GL102	Q MAX.	
X	25	BS100	SOLDER, TIN ALLOY	
X	24	WL100-6	WIRE, ELEC. BUSS	
X	23	PX104-1-.034	INSUL, SLEEVING, SZ. 20	
4	22	CF134-5E	FORM, COIL, WITH CORE	
1	21	TZ190	TRANSFORMER, INPUT	T1014
1	20	CC100-37	CAPACITOR, FIXED, CER. .1 MF	C1142
1	19	DELETED		
1	18	CC100-14	CAPACITOR, FIXED, CER. .0047µF	C1139
1	17	CM15C390J03	CAPACITOR, FIXED, MICA	C1143
1	16	CM15C270J03	CAPACITOR, FIXED, MICA	C1141
1	15	DELETED		
1	14	CL364	COIL, RF	L1036
1	13	TZ201	TRANSFORMER, RF, OUTPUT	T1016
1	12	TZ200	TRANSFORMER, RF, DRIVER	T1015
4	11	MS2897	PLATE, ELEC. GRD.	
4	10	NT137-0632	NUT, PLAIN, HEX, NYLON	
4	9	FW101-1	WASHER, NM, NYLON	
4	8	SC143-0632 B10W	SCREW, MACHINE, NYLON	
4	7	TE154-.196	TERMINAL, LUG, NO. 10	
4	6	CV108-3	CAPACITOR, VAR. GL	
5	5	DELETED		
24	4	LWS04MRN	WASHER, LOCK, SPLIT	
24	3	NTH0440BNG	NUT, PLAIN, HEX	
24	2	TE191-1	TERMINAL, STUD-PIN	
1	1	LD1732/PX 894	TERMINAL, BOARD, RF	

AX 552 E

J. ANGER LIST OF MATERIAL			
MATERIAL	THE TECHNICAL MATERIEL CORP. MAMARONECK, NEW YORK		
FINISH	TITLE: TERMINAL BOARD, RF. ASSY BAND # 5		
UNLESS OTHERWISE SPECIFIED DIMENSIONS ARE IN INCHES AND INCLUDE CHEMICALLY APPLIED OR PLATED FINISHES	DRAWN: G.D.L.	DATE: 2-23-65	FINAL APPROVAL: [Signature]
	CHECKED: [Signature]	DATE: 3/24/65	
DECIMALS: .X ± .05, .XX ± .01, .XXX ± .005	TOLERANCES	FRACTIONS: ± 1/64, ANGLES: ± 0° 30'	ELECT. DES. DATE: 3/22/65
			MECH. DES. DATE: [Blank]
			SHEET: AX552
			REV. LTR. E

CHG-3 A2946		
Q'TY./UNIT	MODEL USED ON	ASSY. NO.
SCALE: DO NOT SCALE	CODE: A	
THE CONTENTS OF THIS DRAWING ARE THE EXCLUSIVE PROPERTY OF THE TECHNICAL MATERIEL CORP. ITS UNAUTHORIZED USE OR REPRODUCTION IN WHOLE OR IN PART IS STRICTLY FORBIDDEN.		

**NOTES**