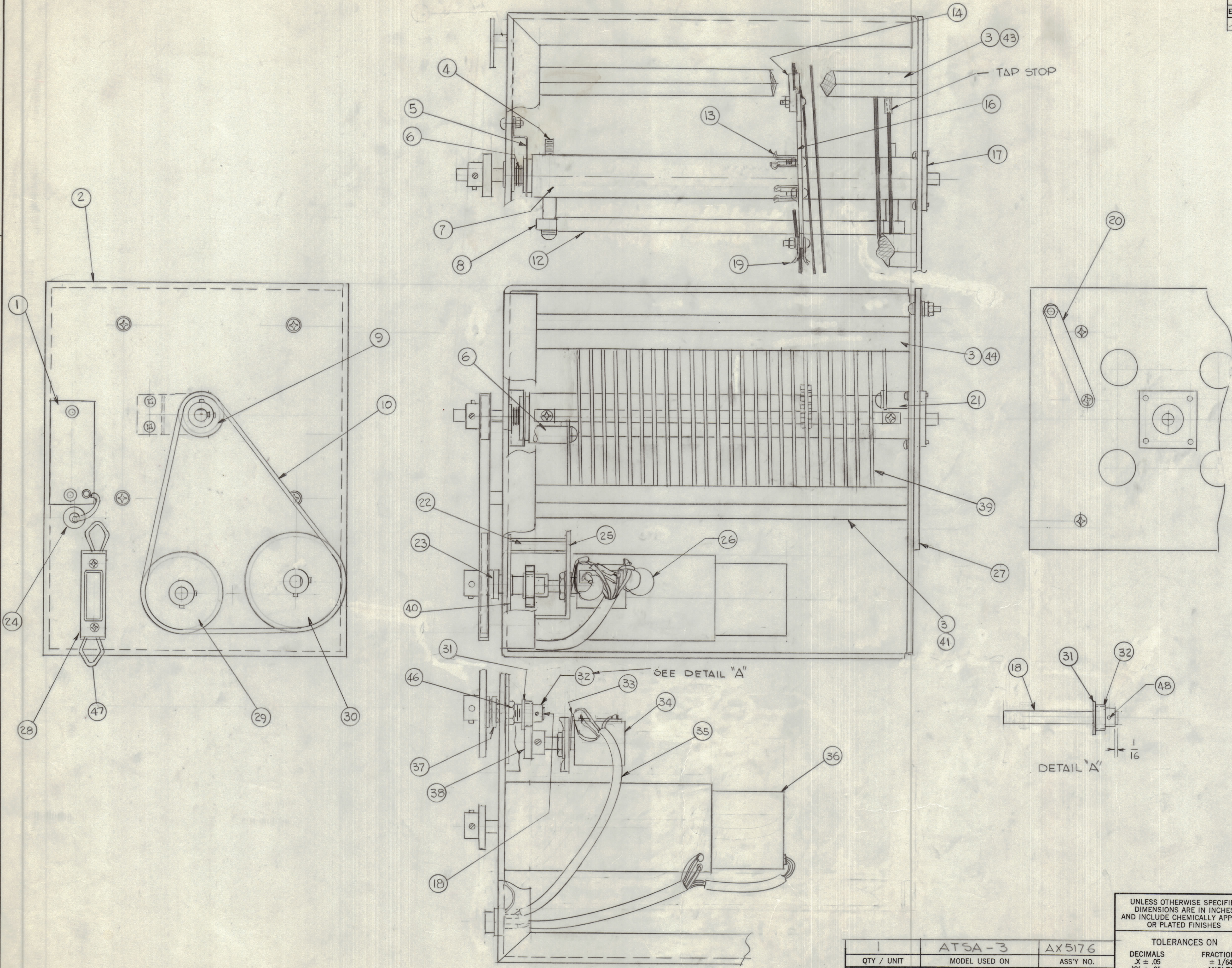


				REVISIONS			
E.M.N.O.	DRAFT	CHKD	ZONE	LTR	DESCRIPTION	DATE	APPROVED
				φ	ORIGINAL RELEASE FOR PRODUCTION	8-17-77	



QTY. REQ.	ITEM	PART NO.	DESCRIPTION	SYMBOL
1	48	PN59-062-B	PIN, SPRING	
2	47	FS 125-2	SPRING LATCH	
1	46	BB 101	BEARING, PANEL	
2	45	BB 126-5	BEARING, RACE	
1	44	PX 1233-4	SPACER, COIL	
1	43	PX 1233-3	SPACER, COIL	
1	42	PX 1233-2	SPACER, COIL	
1	41	PX 1233-1	SPACER, COIL	
1	40	MS 6584	MTG. PLATE MOTOR	
1	39	CL133-6R25CW	COIL, RF	
1	38	GR 205-1B	GEAR	
1	37	P/O CB 147	BEARING, WASHER	
1	36	MO 126	MOTOR, SERVO	
1	35	CA 1743	CABLE, RES	
1	34	RV 117-2-102	RES VAR.	
1	33	TE 111-2	TERMINAL, GND	
1	32	GR 109-2	GEAR, PINION	
1	31	FW 25 MRN	FLAT, WASHER	
1	30	GR 243-4	GEAR, 3MP 265-40	
1	29	GR 243-3	GEAR, 3MP 265-32	
1	28	JJ 313-1	CONNECTOR, RECP, ML 15/C	
1	27	PX 1234	BD COIL MTG.	
2	26	CC 100-44	CAP. FXD. CERAMIC	
1	25	MS 6585	BRACKET, RES. MTG	
1	24	EY 102-27	GROM. RUB	
1	23	FW	FLAT, WASHER	
1	22	TE 0632AE 48H	SPACER, THD	
1	21	TE 0632AE 0437RG	SPACER, THD	
1	20	MS 202-1-2-500	STRAP, CONN	
2	19	PM 1562	CONTACT 1	
1	18	PM 691RF 2.005S	SHAFT, GEAR	
1	17	PM 1557	PLATE, BEARING	
1	16	MS 6469	ROTOR, COIL, ASSY	
2	15	BB 106-1	BEARING, THRUST	
1	14	PX 1235	GUIDE ROTOR	
1	13	PM 1563	CONTACT, ELECT	
1	12	PX 370	INSULATION SLEEVING	
1	11	TE 0632AE 1125R	SPACER, THD	
1	10	CJ 105-2	CHAIN, 3CCF-90-E	
1	9	GR 243-1	GEAR, 3MP 265-32	
1	8	PM 1560	GUIDE BAR, ROTOR	
1	7	PM 1558	SHAFT, MAIN	
1	6	SP 154-4		
1	5	PM 1561	CONTACT, SPRING	
2	4	PM 1559	SUPPORT, GUIDE	
4	3	PX 906-4		
1	2	MS 6468	CHASSIS, COIL ASSY	
1	1	PC 675	PRINTED CIRCUIT BD	

1	ATSA-3	AX5176
QTY / UNIT	MODEL USED ON	ASS'Y NO.
	APPLICATION	
	CODE	

NOTICE TO PERSONS RECEIVING THIS DRAWING
 THE TECHNICAL MATERIEL CORPORATION claims proprietary right in the material disclosed hereon. This drawing is issued in confidence for engineering information only and may not be reproduced or used to manufacture anything shown hereon without permission from THE TECHNICAL MATERIEL CORPORATION to the user. This drawing is loaned for mutual assistance and is subject to recall at any time.

UNLESS OTHERWISE SPECIFIED DIMENSIONS ARE IN INCHES AND INCLUDE CHEMICALLY APPLIED OR PLATED FINISHES	
TOLERANCES ON	
DECIMALS	FRACTIONS
.X ± .05	± 1/64
.XX ± .01	ANGLES
.XXX ± .005	± 0° -30'

MATERIAL	
FINISH	

FINAL APPROVAL	DATE	THE TECHNICAL MATERIEL CORP. MAMARONECK, NEW YORK COIL, ASS'Y	SIZE CODE IDENT NO. DWG NO. D 82679 AX 5178	ISSUE φ
MECH. DES.	DATE			
ELECT. DES.	DATE			
CHECKED	DATE			
DRAWN	DATE	SCALE 1:1		SHEET OF