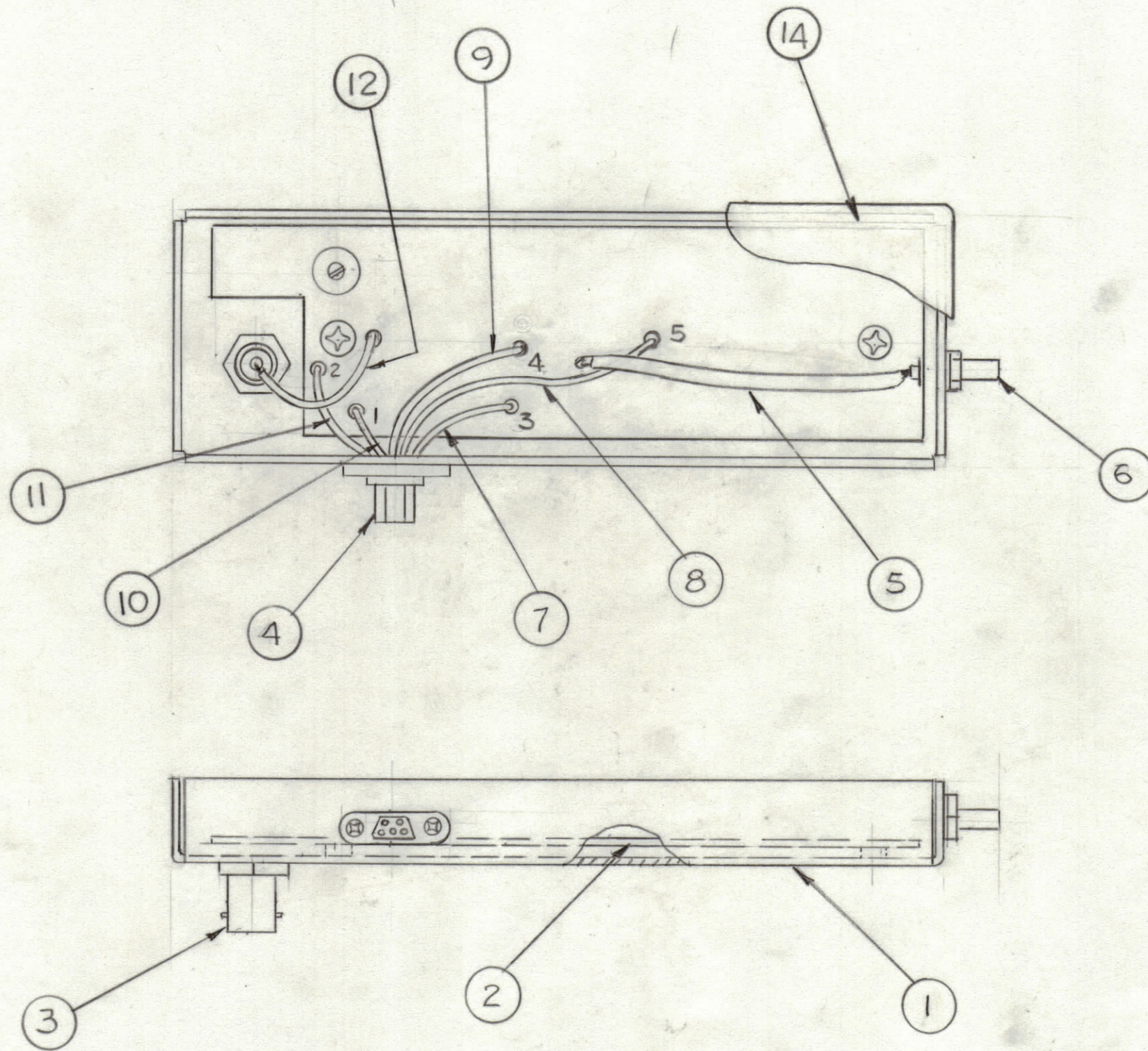


ENGINEERING SKETCH

NOT FOR PRODUCTION

REVISIONS						
ZONE	LTR	DESCRIPTION	DATE	E.M.N.NO	DRAFT	CHKD
	Ø	ORIGINAL RELEASE FOR PRODUCTION			G.D.L.	*



No Change  
Revised

QTY. REQ.	ITEM	PART NO.	DESCRIPTION	SYMBOL
X	1	BS100	SOLDER, TIN ALLOY	
1	14	MS6614	COVER, SHIELD	
AR	13	PX100	INSULATION, SLEEVING	
AR	12	WI100-1	WIRE, BUSS	
AR	11	LWC26(7)U2	WIRE, ELECTRICAL	
AR	10	LWC26(7)U1	WIRE, ELECTRICAL	
AR	9	LWC26(7)U4	WIRE, ELECTRICAL	
AR	8	LWC26(7)U5	WIRE, ELECTRICAL	
AR	7	LWC26(7)U3	WIRE, ELECTRICAL	
1	6	JJ154	CONN, COAX MINIATURE	
AR	5	RG188/U	CABLE, COAX	
1	4	PL241-1	CONN, 5 PIN	
1	3	UG625/U	CONN, COAX	
1	2	A5628	ASSY, PC BOARD	
1	1	MS6613/LD3033	SHIELD, ANTENNA PRESELECTOR	

LIST OF MATERIAL

1	GPR-110	
QTY / UNIT	MODEL USED ON	ASS'Y NO.
APPLICATION		
	CODE	
<p>NOTICE TO PERSONS RECEIVING THIS DRAWING</p> <p>THE TECHNICAL MATERIEL CORPORATION claims proprietary right in the material disclosed hereon. This drawing is issued in confidence for engineering information only and may not be reproduced or used to manufacture anything shown hereon without permission from THE TECHNICAL MATERIEL CORPORATION to the user. This drawing is loaned for mutual assistance and is subject to recall at any time.</p>		

UNLESS OTHERWISE SPECIFIED DIMENSIONS ARE IN INCHES AND INCLUDE CHEMICALLY APPLIED OR PLATED FINISHES

TOLERANCES ON

DECIMALS	FRACTIONS
.X ± .05	± 1/64
.XX ± .01	ANGLES
.XXX ± .005	± 0° -30'

FINAL APPROVAL	DATE
<i>G.D.L.</i>	11/10/77
MECH. DES.	DATE
ELECT. DES.	DATE
CHECKED	DATE
DRAWN	DATE
G.D.L.	6-30-75

THE TECHNICAL MATERIEL CORP. MAMARONECK, NEW YORK			
ASSY, SHIELDED PRESELECTOR, FIL			
SIZE	CODE IDENT.NO.	DWG NO.	ISSUE
C	82679	AX5197	Ø
SCALE 1:1	SHEET		OF

AX5179