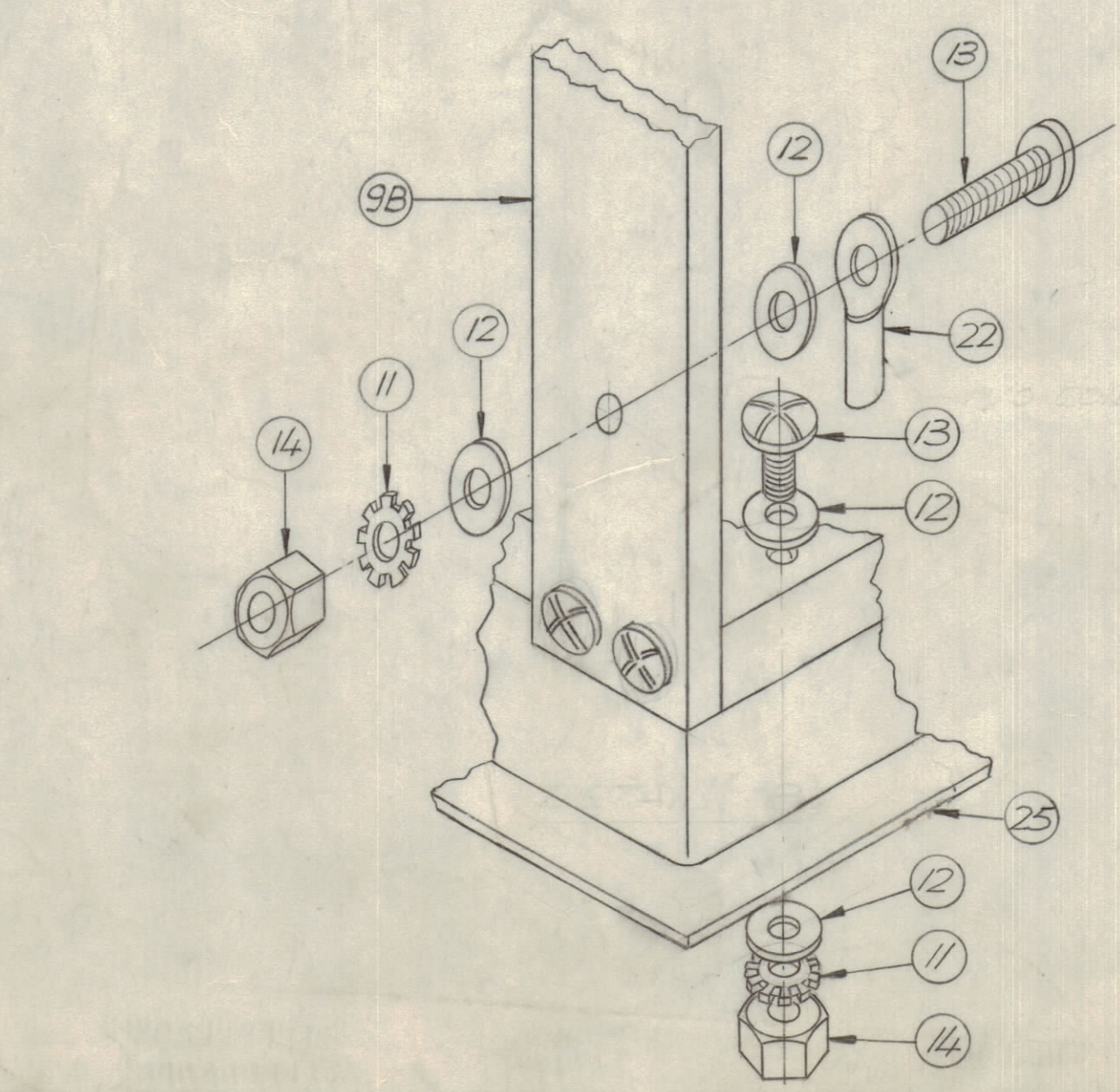
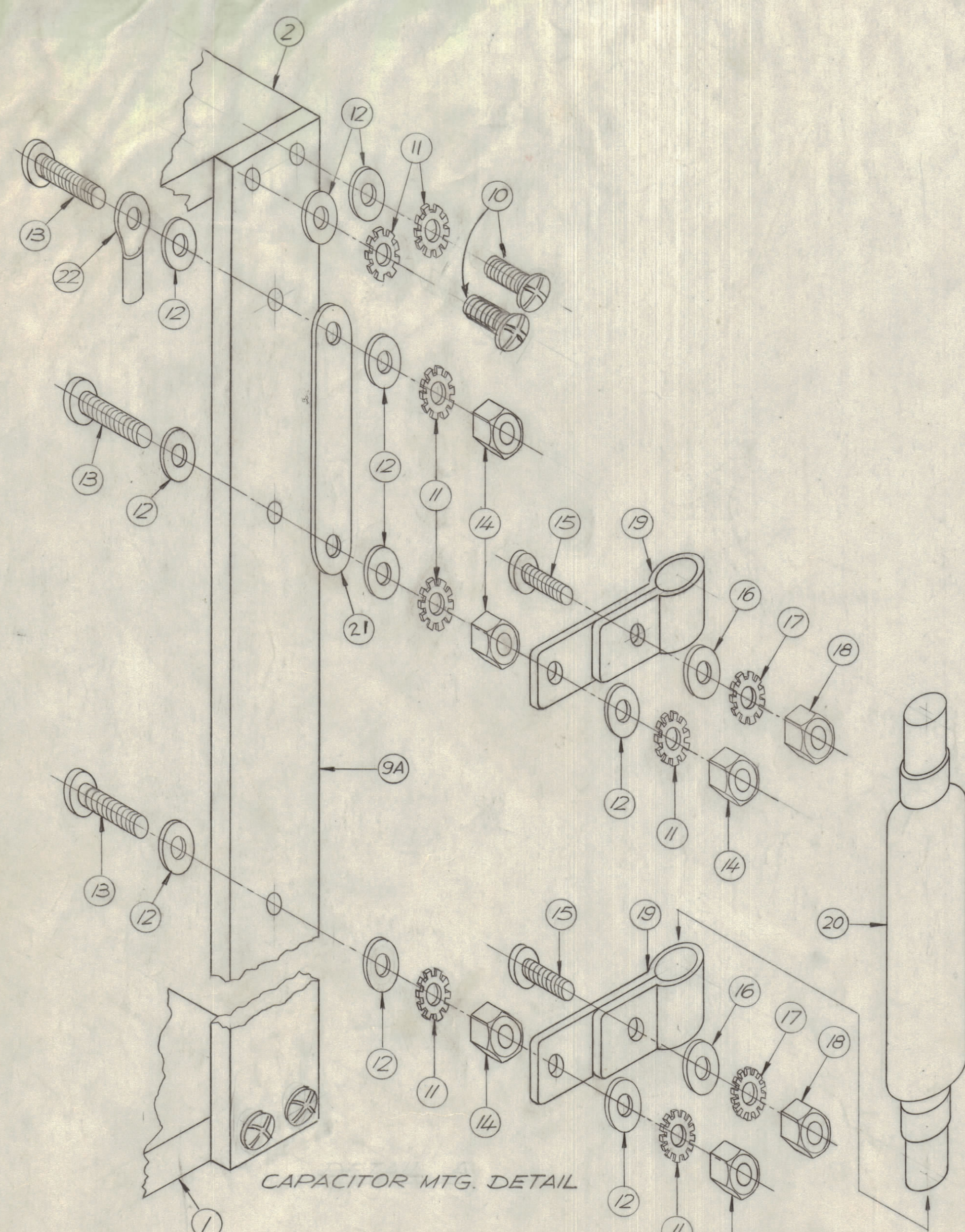
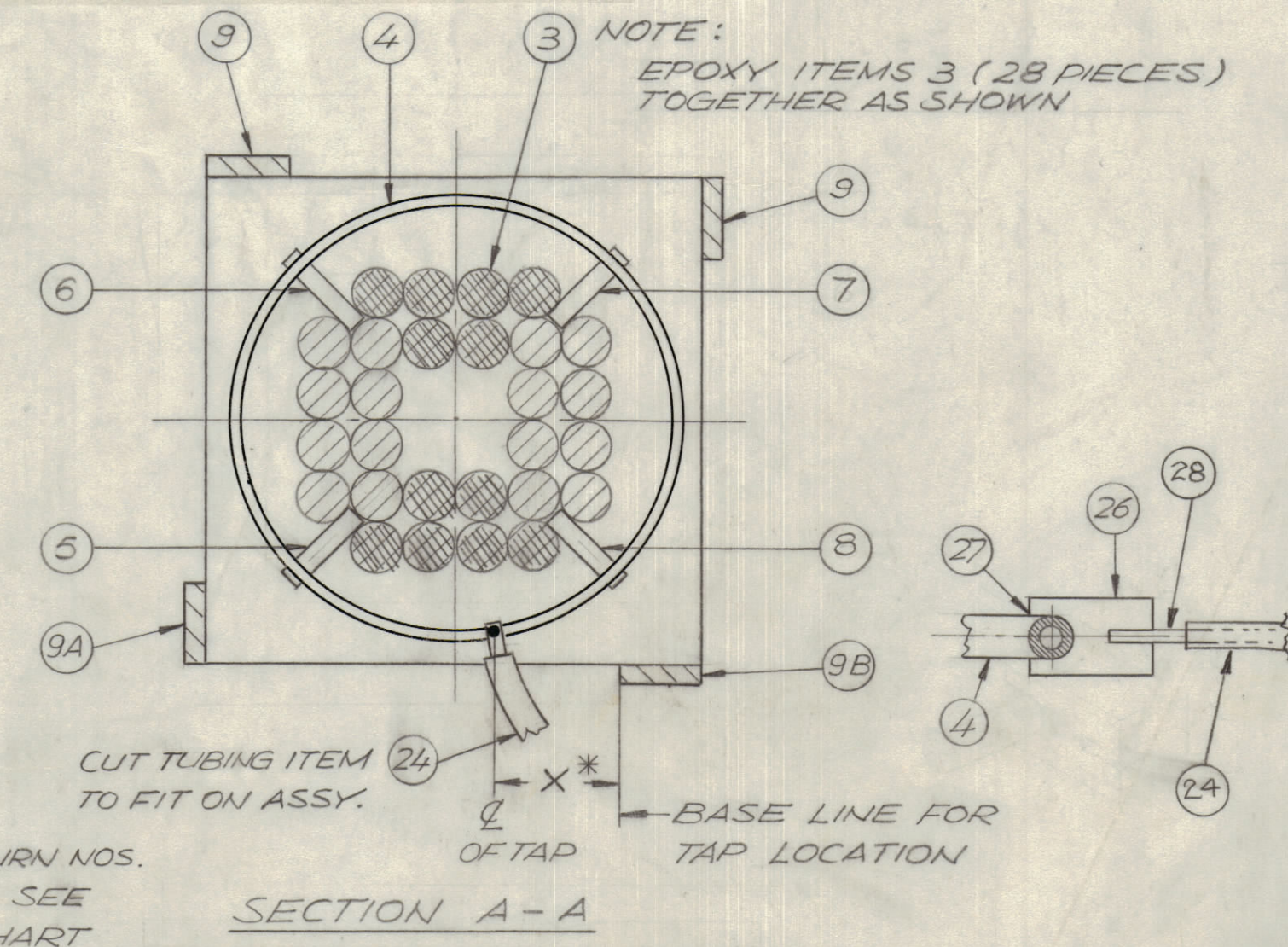
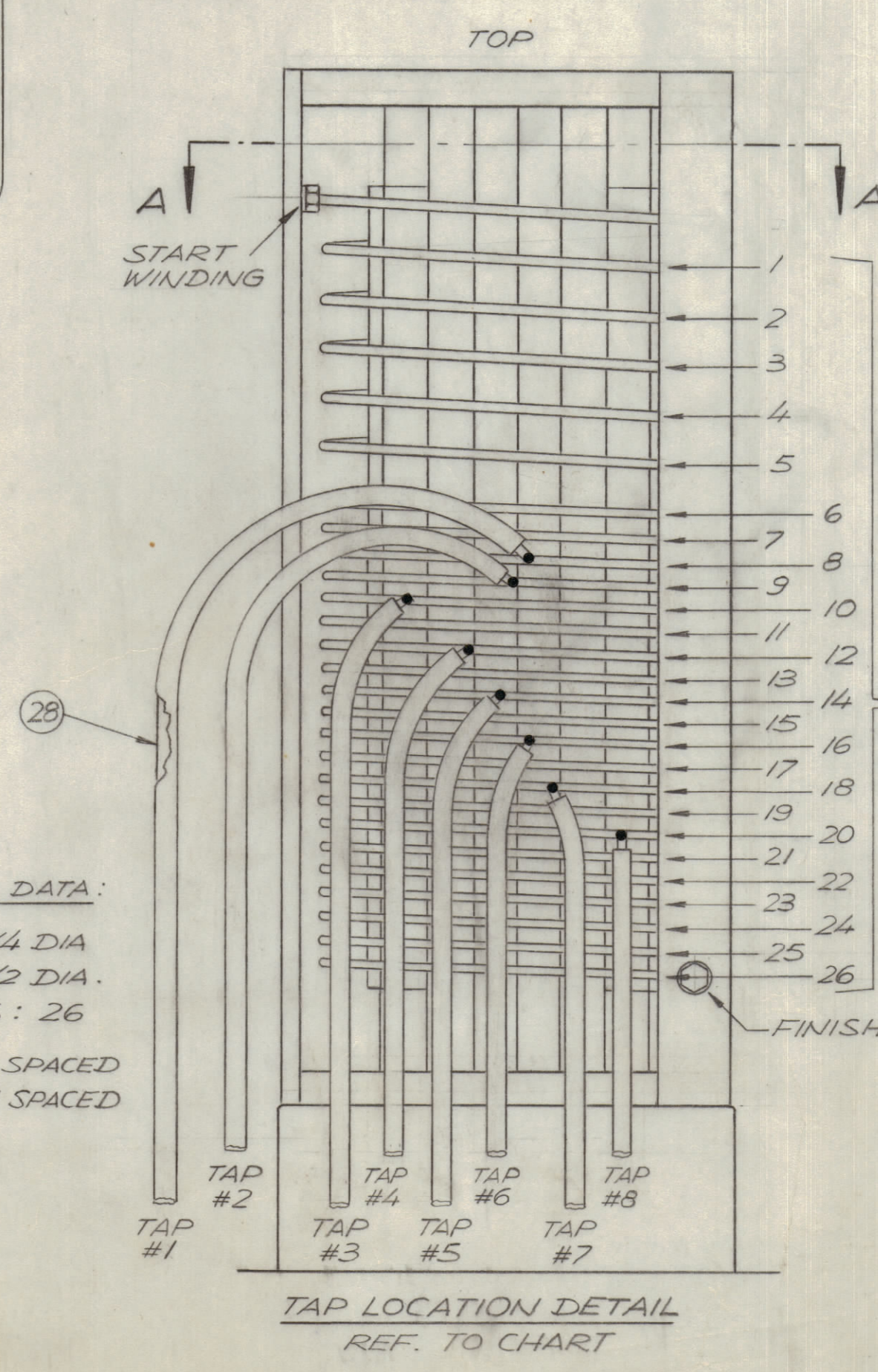
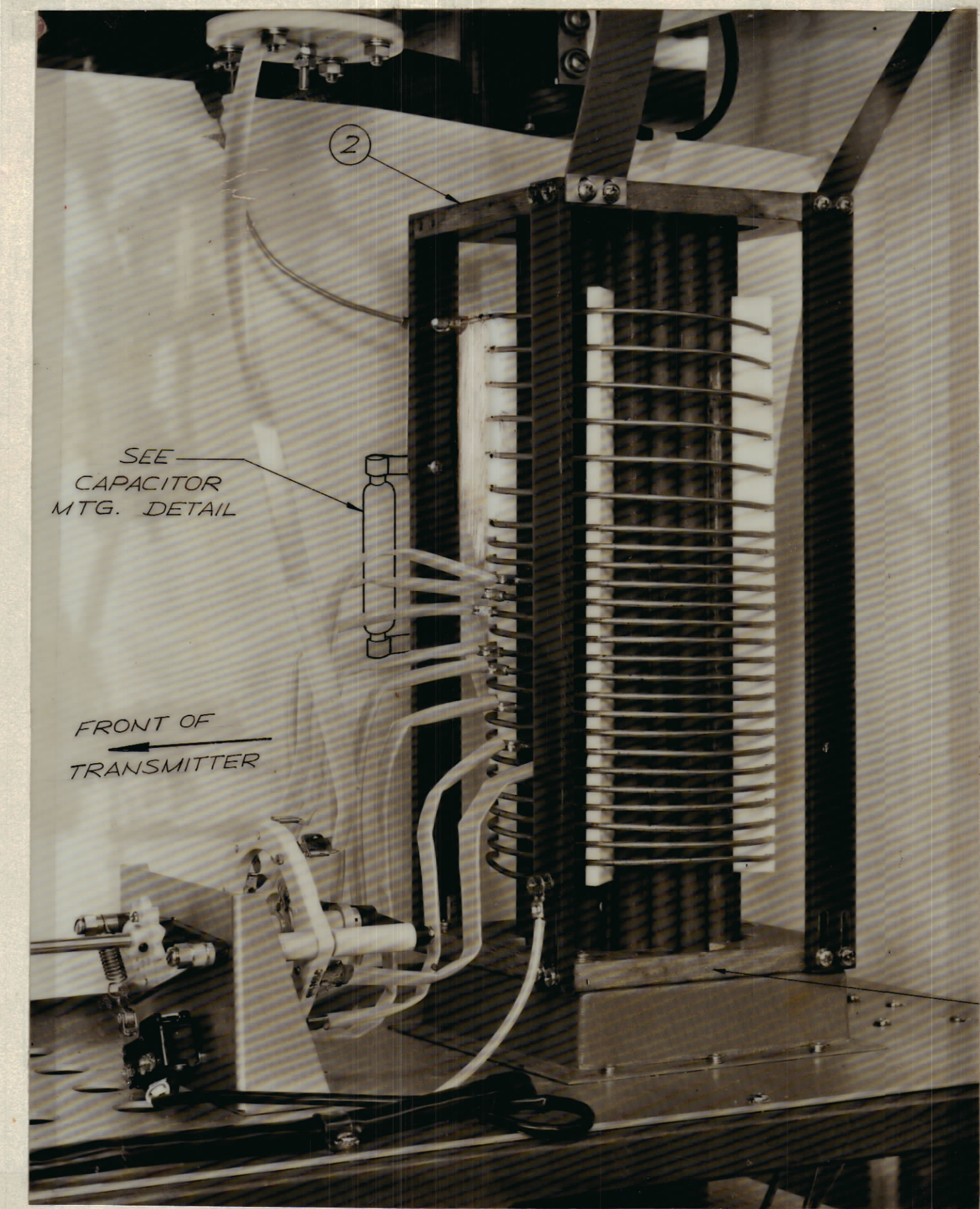


		REVISIONS					
ZONE	LTR	DESCRIPTION	DATE	E.M.N.NO	DRAFT	CHKD	APPD
X		EXP. RELEASE	11/1/68				
X		PICTORIAL CLARIFIED - BUILD UP UPDATED	11/21/68	X1			
Ø		ORIGINAL RELEASE FOR PROD	11/21/68	Ø			
A		ITEMS 5,6,7,8 RELOCATED	5/21/68	19439	GE		



COIL WINDING DATA:
 COIL ID = 5/4 DIA.
 COIL OD = 5/2 DIA.
 TOTAL TURNS: 26

TURNS: 1 THRU 6: DOUBLE SPACED
 TURNS: 6 THRU 26: SINGLE SPACED
 NOTE: COIL WINDING IS C.C.W. VIEWED FROM TOP



TAP No.	TURN No.	DIM. X*	LENGTH (STEEL 24)
1	8	17/8	15"
2	9	2	15"
3	10	3 1/2	15"
4	12	2 5/8	15"
5	14	2 3/16	15"
6	16	1 3/4	15"
7	18	1 1/2	15"
8	20	1/2	15"

QTY / UNIT	MODEL USED ON	ASS'Y NO.
1	BCT 10 KA	

APPLICATION

CODE

NOTICE TO PERSONS RECEIVING THIS DRAWING
 THE TECHNICAL MATERIEL CORPORATION claims proprietary right in the material disclosed herein. This drawing is issued in confidence for engineering information only and may not be reproduced or used to manufacture anything shown hereon without permission from THE TECHNICAL MATERIEL CORPORATION to the user. This drawing is loaned for mutual assistance and is subject to recall at any time.

QTY. REQ.	ITEM	PART NO.	DESCRIPTION	SYMBOL
Ø	28	MS 202-1-16.000	LEAD, CONNECTING (7/16 WIDE)	
X	27	BS 101-1	BRAZING ALLOY, SILVER	
Ø	26	PM 1381	COIL LUG	
1	25	PX 1053	DUCT, MTG, OUTPUT COIL	
X	24	PX370-37-7	TEFLON TUBING (.375 DIA, SEE CHART)	
X	23	GL-132	ADHESIVE, EPOXY	
2	22	TE-141-3	LUG TERMINAL	
1	21	MS 202-22-4.562	LEAD, CONNECTING (7/16 WIDE)	
1	20	CO 102-3	CAPACITOR, FIXED, VAC	
2	19	MS 23 42	STRAP, CONNECTING, 3 MMF METERING CAP.	
2	18	NTH0632 BN8	NUT, HEXAGONAL	
2	17	LWE06 MRN	WASHER, LOCK EXT	
2	16	FW06 MRN	WASHER, FLAT	
2	15	SCBP 0632 BN5	SCREW, MACHINE	
14	14	NTH0832 BN10	NUT, HEXAGONAL	
12	13	SCBP0832 BN13	SCREW, MACHINE	
42	12	FW08 HBN	WASHER, FLAT	
30	11	LWE08 MRN	WASHER, LOCK EXT.	
16	10	SCBP0832 BN10	SCREW, MACHINE	
1	9B	PX 1030-3	BRACKET XFMR TIE DOWN	
1	9A	PX 1030-2	BRACKET XFMR TIE DOWN	
2	9	PX 1030	BRACKET XFMR TIE DOWN	
1	8	PX 1033-4	SPACER, COIL	
1	7	PX 1033-3		
1	6	PX 1033-2		
1	5	PX 1033-1	SPACER, COIL	
X	4	TU 100-2N	TUBE, COPPER SOFT	
28	3	CI 112-Q2-14L	CORE, ROD	
1	2	PX 1036	PLATE, HOLDER, TOP	
1	1	PX 1025	PLATE, HOLDER, BOTTOM	

FINAL APPROVAL		DATE	LIST OF MATERIAL	
E. BUDETTI		11/21/68	THE TECHNICAL MATERIEL CORP.	
MECH. DES. A.P.		11/21/68	MAMARONECK, NEW YORK	
ELECT. DES. T.T.		11/21/68	OUTPUT COIL ASSY	
CHECKED H.S.		11/5/68		
DRAWN K. Hines		11/1/68		
SIZE	CODE IDENT. NO.	DWG NO.	ISSUE	
D	82679	AX 700-	A	
SCALE		SHEET		OF
		1		OF