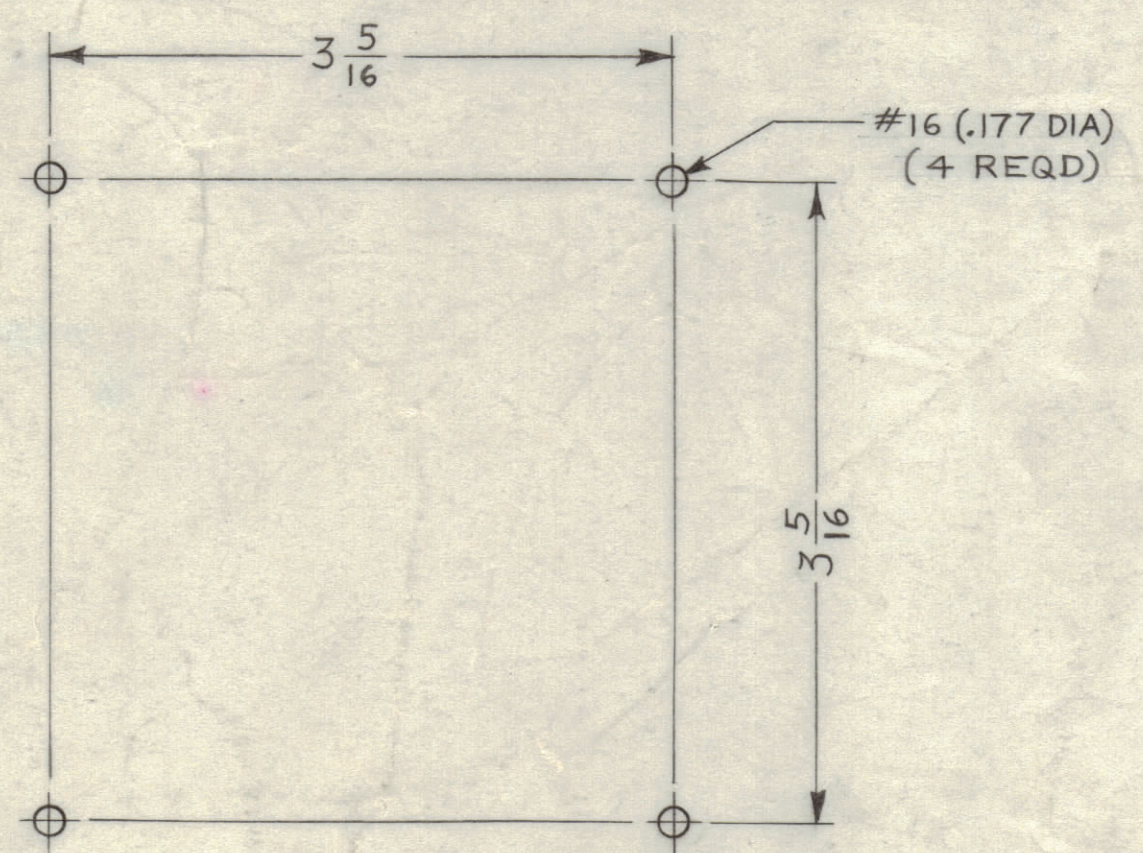
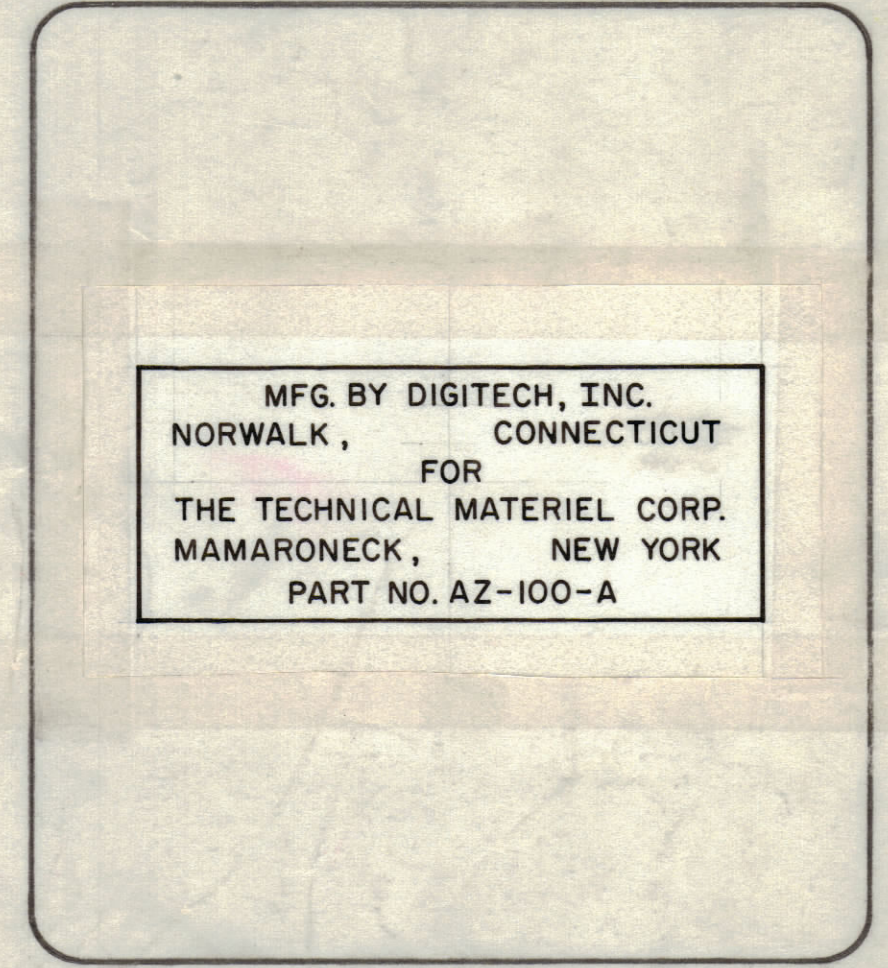
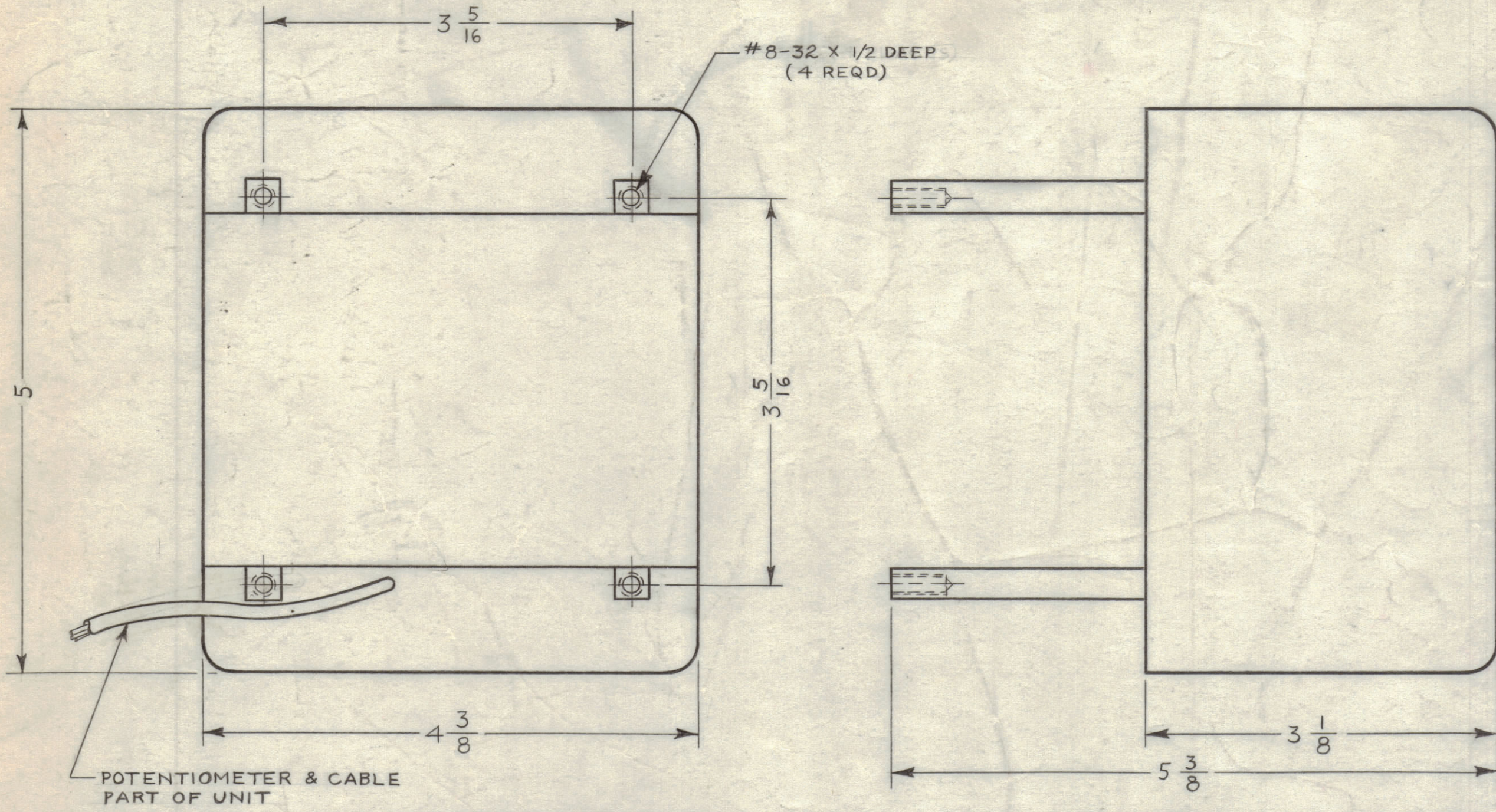


REVISIONS							
ZONE	SYM	DESCRIPTION	DATE	E.M.N. NO.	DRAFT	CHKD	APPD
F2	A	MFG ADDED TO NAMEPLATE	11-27-63	10468	<i>Ref</i>	<i>Att</i>	<i>WJ</i>



MOUNTING DETAIL

ELECTRICAL SPECIFICATIONS

115 VAC - 60 CPS

MECHANICAL SPECIFICATIONS

FINISH- S115 SMOOTH GREY ENAMEL
 LETTERING- 1/8 HIGH BLACK GOTHIC, LETTERING, AS SHOWN.

NOTICE TO PERSONS RECEIVING THIS DRAWING
 THE TECHNICAL MATERIEL CORPORATION claims
 proprietary right in the material discussed herein.
 This drawing is issued in confidence for engineering
 information only and may not be reproduced or used
 to manufacture anything shown herein without per-
 mission from THE TECHNICAL MATERIEL CORPORA-
 TION to the user. This drawing is loaned for mutual
 assistance and is subject to recall at any time.
 Property of:
 THE TECHNICAL MATERIEL CORPORATION
 MAMARONECK, NEW YORK

REQ'D.	ITEM	PART NUMBER	DESCRIPTION	SYMBOL
STRUMER LIST OF MATERIAL				
3	BSP-3			
2	BSP-2			
1	BSP-1			
Q'TY./UNIT		MODEL USED ON	ASS'Y. NO.	
SCALE		CODE		
DO NOT SCALE		C	S401-198 (DT-350)	

MATERIAL		THE TECHNICAL MATERIEL CORP. MAMARONECK, NEW YORK	
FINISH		TITLE	
SEE MECH. SPEC.		AMPLIFIER, BRIDGING	
DRAWN	DATE	FINAL APPROVAL	DATE
<i>WJ</i>	1/8/63	<i>BSP</i>	
CHECKED	DATE		
<i>JD</i>	8/3/63		
ELECT. DES.	DATE		
MECH. DES.	DATE		

THE CONTENTS OF THIS DRAWING ARE THE EXCLUSIVE PROPERTY
 OF THE TECHNICAL MATERIEL CORP. ITS UNAUTHORIZED USE OR
 REPRODUCTION IN WHOLE OR IN PART IS STRICTLY FORBIDDEN.

DECIMALS	FRACTIONS	TOLERANCES	ANGLES
.X ± .05	± 1/64		
.XX ± .01			
.XXX ± .005	± 0° 30'		

NOTES

AZ-100 A