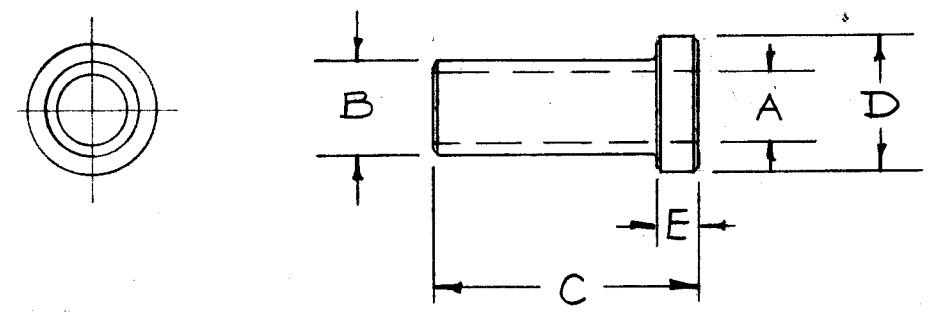


BB-118

STANDARD DRAWING

TMC NO.	Mfg. NO.	DIMENSIONS				
		A (I.D.)	B (O.D.)	C	D	E
BB-118-1	FB-35-1	.189	.3145	1/8	.375	3/64
2	FB-35-3	.189	.3145	3/8	.375	"
3	FB-46-2	.252	.377	1/4	.481	"
4	FB-46-3	.252	.377	3/8	.481	"
5	FB-46-5	.252	.377	5/8	.481	"
6	FB-58-3	.314	.502	3/8	.6875	3/32
7	FB-58-5	.314	.502	5/8	.6875	"
8	FB-68-3	.377	.502	3/8	.6875	"
9	FB-68-5	.377	.502	5/8	.6875	"
10	FB-610-4	.377	.627	1/2	.875	1/8
11	FB-610-6	.377	.627	3/4	.875	"
12	FB-610-10	.377	.627	1 1/4	.875	"
13	FB-710-5	.439	.628	5/8	.875	"
14	FB-710-10	.439	.628	1 1/4	.875	"
15	FB-810-8	.502	.628	1	.875	"
16	FB-810-14	.502	.628	1 3/4	.875	"
17	FB-811-6	.502	.690	3/4	.938	"
18	FB-812-6	.502	.753	3/4	1	"
19	FB-812-8	.502	.753	1	1	"
20	FB-1012-8	.626	.753	1	1	"
21	FB-1013-6	.627	.815	3/4	1.063	5/32
22	FB-1013-10	.627	.815	1 1/4	1.063	"
23	FB-1013-12	.627	.815	1 1/2	1.063	5/32
24	FB-1215-8	.752	.940	1	1.188	"
25	FB-1215-12	.752	.940	1 1/2	1.188	"
26	FB-1216-6	.752	1.003	3/4	1.250	"
27	FB-1216-8	.752	1.003	1	1.250	"
28	FB-1416-6	.877	1.003	3/4	1.250	"
BB-118-29	FB-1416-10	.877	1.003	1 1/4	1.250	"
BB-118-30	FB-810-5	.502	.628	5/8	.875	1/8
-31	FB-68-8	.377	.502	1	.6875	3/32
-32	FB-58-5	.314	.502	5/8	.6875	3/32
-33	FB-68-6	.377	.502	3/4	.6875	3/32
-34	FB-68-4	.377	.502	1/2	.6875	3/32
-35	FB-35-2	.189	.3145	1/4	.375	3/64
-36	SPECIAL	.252	.377	1/64	.481	3/64
-37	SPECIAL	.377	.502	1/4	.6875	3/32
-38	SPECIAL	.377	.502	19/64	.6875	.062 ^{±.000} -.005
-39	SPECIAL	.377	.502	5/16	.6875	3/32

SUPERSEDED BY BB-118-32



NOTICE TO PERSONS RECEIVING THIS DRAWING

THE TECHNICAL MATERIEL CORPORATION claims proprietary right in the material disclosed herein. This drawing is issued in confidence for engineering information only and may not be reproduced or used to manufacture anything shown hereon without permission from THE TECHNICAL MATERIEL CORPORATION to the user. This drawing is loaned for mutual assistance and is subject to recall at any time.

Property of:
THE TECHNICAL MATERIEL CORPORATION
MAMARONECK, NEW YORK

Ref. Boston Gear Works (TYPE FB)

ISSUE							* TOLERANCES				REQ. ITEM		PART NO.		DESCRIPTION		SYMBOL						
ISSUE	ITEM	CHANGED FROM	DATE	CH. NO.	DRAFTS	CHECKER	ENG. APP.	I.D. ≠ O.D.	TOLERANCES	LENGTH	TOL.	AS PER CHART	THE TECHNICAL MATERIEL CORP. MAMARONECK, NEW YORK										
I		ADDED -39	4/27/72	20658	GE	8	8	UP TO 1"	+ .000 - .001	UP TO 1 1/2"	± .005	STOCK SIZE	BEARING - FLANGE TYPE										
H	1	IT. -38 ADDED	1/5/66	1544	F.V.	9	9	1" TO 2"	+ .000 - .002	1 1/2" TO 3"	± .008	BRONZE											
G	1	BB118-37 DIM. 'C' WAS 9/32	4-23-64	11271	A.M.	10	10	2" TO 2 1/2"	+ .000 - .003	OVER 3"	± .010	MATERIAL											
TOLERANCES							SCALE:							6/27/58		JAW		AJT					
DEC. DIM. ±							MAXIMUM ALLOWABLE TOLERANCES HAVE BEEN DETERMINED AND ANY DEVIATIONS WILL BE CAUSE FOR REJECTION. REMOVE ALL BURRS AND SHARP EDGES.							TYPE & TEMPER		HEAT TREAT. SPEC.		DRAWN		CHECKED		FINAL APPROVAL	
FRAC. DIM. ±							SEE CHART							FINISH & SPEC. NO.		REC. DES. APP.		MECH. DES. APP.		BB-118			
ANGULAR DIM. ±							*							USED ON									