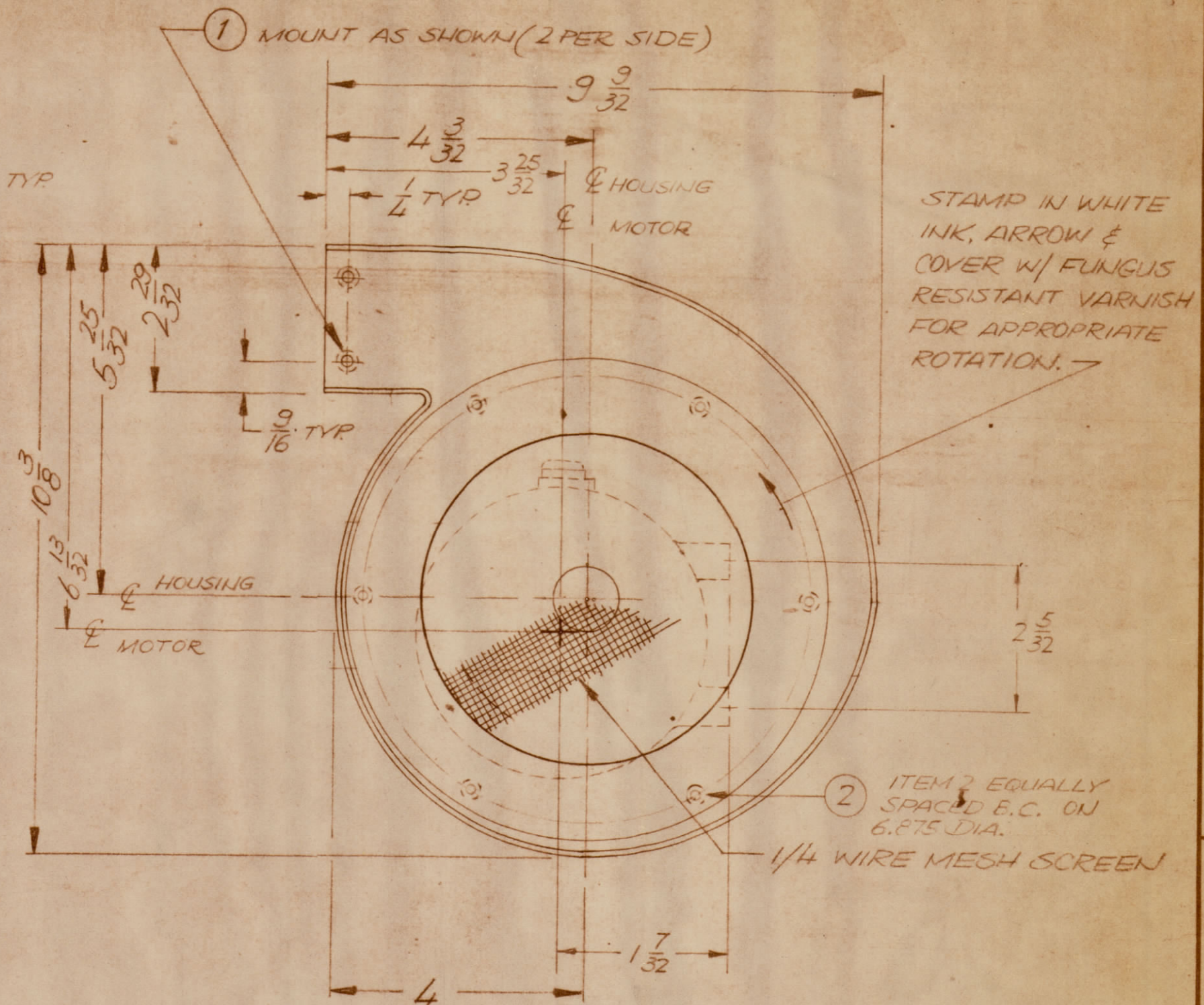
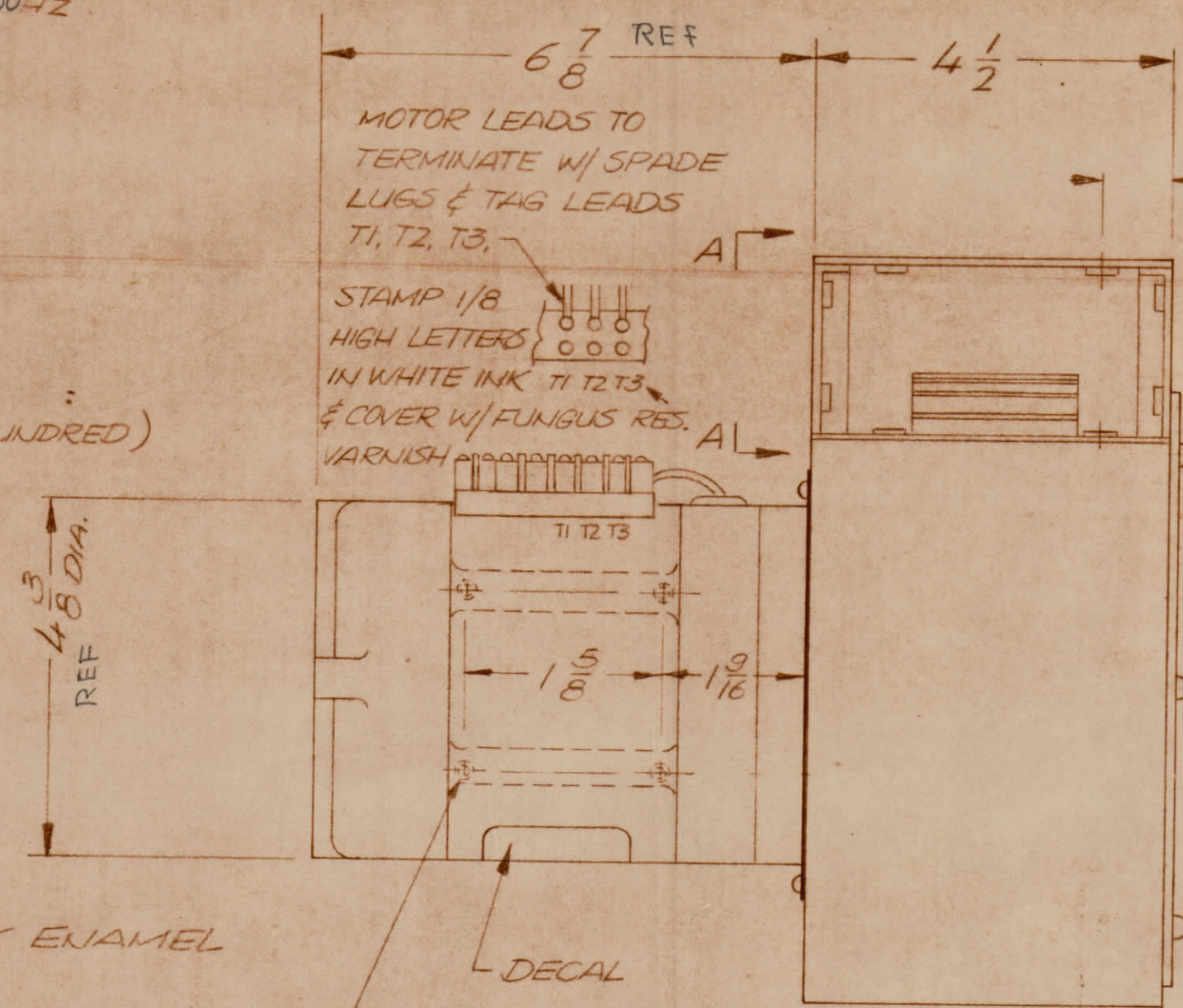
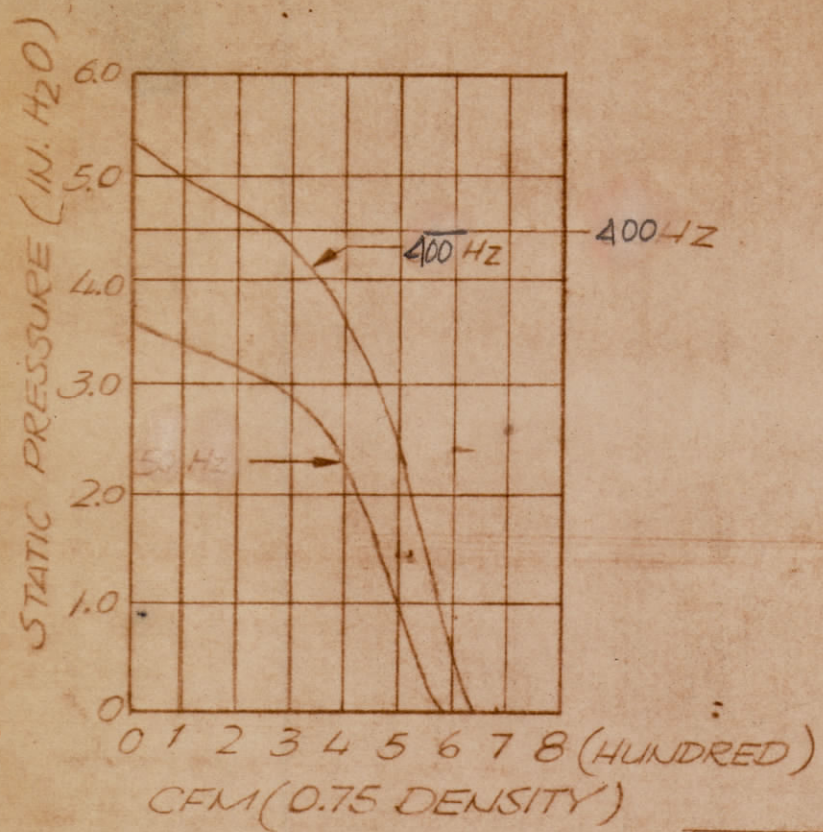
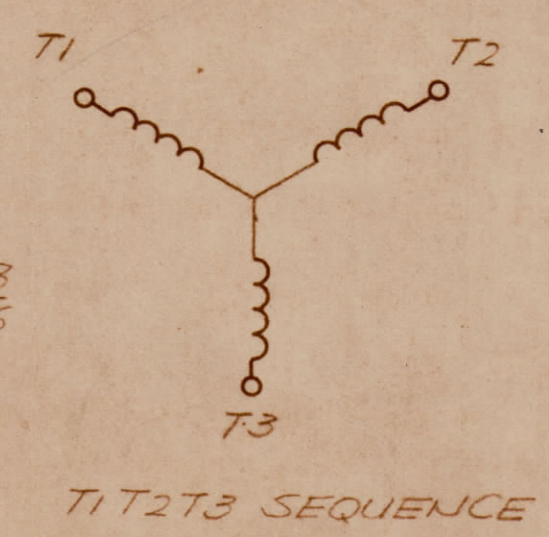
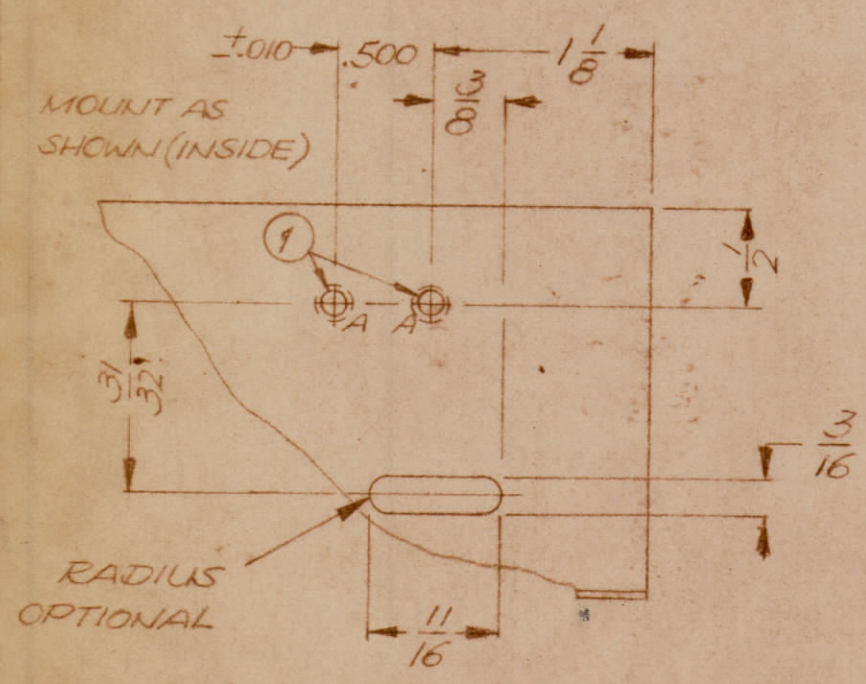


REVISIONS						
ZONE	LTR	DESCRIPTION	DATE	E.M.N.NO	DRAFT	CHKD APPD
	X1	RELEASED TO CUSTOMER				
	X2	ADD MOTOR MOUNT, REVISED	3-29-72			
		CFM CHT. ADD. 50 OR 60 CYCLE DESIG.				
	0	ORIGINAL RELEASE FOR PRODUCTION	4-3-72		GE	A.P. F.B.
	A	CHG. SPECS. TERM STRIP	6/20/72	20749	GE	EQ EQ



FINISH  
 BLOWER HOUSING - BLACK ENAMEL  
 MOTOR - BLACK ANODIZE

4 HOLES #1032  
 NF THD. 5/16 DEEP  
 NAMEPLATE  
 NOTE: STAMP 50 OR 60  
 PER REQUIREMENT ON DECAL



BL148-400  
 BASIC TMC P/N HZ

ALL SCROLL DIMENSIONS ± 1/16

A' HOLE .191-.194 DIA. 2 REQ.

VIEW A-A

POWER - 180 WATTS  
 CURRENT - 2.5 AMPS  
 SPEED - 3000 RPM  
 POWER - 100 WATTS  
 CURRENT - 1 AMPS  
 RATING - 208V 400 HZ 3PH. SEE NOTE

1	HFL ( ) 10K	AP148
QTY / UNIT	MODEL USED ON	ASS'Y NO.
APPLICATION		
CODE		

NOTICE TO PERSONS RECEIVING THIS DRAWING  
 THE TECHNICAL MATERIEL CORPORATION claims proprietary right in the material disclosed hereon. This drawing is issued in confidence for engineering information only and may not be reproduced or used to manufacture anything shown hereon without permission from THE TECHNICAL MATERIEL CORPORATION to the user. This drawing is loaned for mutual assistance and is subject to recall at any time.

UNLESS OTHERWISE SPECIFIED DIMENSIONS ARE IN INCHES AND INCLUDE CHEMICALLY APPLIED OR PLATED FINISHES

TOLERANCES ON  
 DECIMALS: .X ± .05, .XX ± .01, .XXX ± .005  
 FRACTIONS: ± 1/64, ANGLES ± 0' - 30'

MATERIAL  
 FINISH: AS NOTED

QTY. REQ.	ITEM	PART NO.	DESCRIPTION	SYMBOL
6	2	NT129-1032-4	NUT, ROUND	
10	1	NT129-0632-4	NUT, ROUND	

LIST OF MATERIAL			
FINAL APPROVAL		DATE	
MECH. DES.		DATE	
ELECT. DES.		DATE	
CHECKED		DATE	
DRAWN		DATE	
THE TECHNICAL MATERIEL CORP. MAMARONECK, NEW YORK			
CENTRIFUGAL BLOWER			
SIZE	CODE	IDENT. NO.	DWG. NO.
C	82679	BL148	
SCALE NTS			ISSUE
			A
SHEET 1 OF 1			