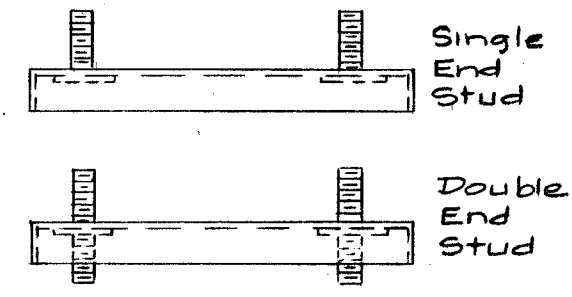
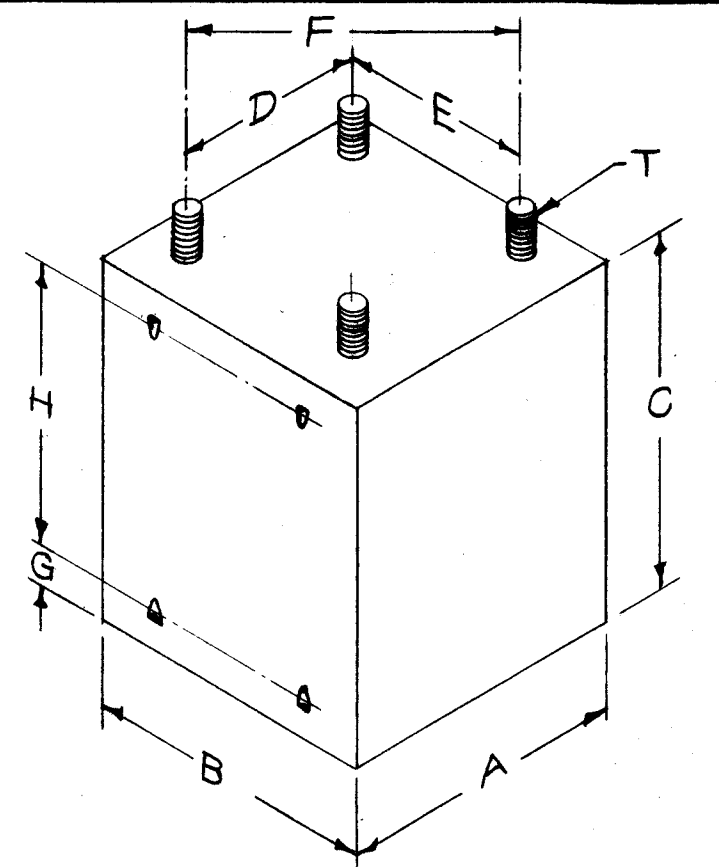


E	TMC PART NO.	HELDOR PART NO.	CASE DIMENSIONS			MOUNTING DIMENSIONS			COVER STOP DIMENSIONS		STUDS	GAUGE
			A	B	C	D	E	F	G	H		
BX-100-1	105-AF		3/4	3/4	1-1/8			9/16	15/64	21/32	4-40 x 3/8	.019-.025
BX-100-2	106-AG		1	1	1-3/8			3/4	15/64	29/32	4-40 x 3/8	.019-.025
BX-100-3	102-AH		1-5/16	1-5/16	1-3/4			1-1/4	15/64	1-9/32	6-32 x 3/8	.019-.025
BX-100-4	100-AJ		1-5/8	1-5/8	2-3/8	1-3/16	1-3/16		15/64	1-29/32	6-32 x 3/8	.019-.025
BX-100-5	103-EA		1-15/16	1-13/16	2-3/4	1-3/8	1-1/4		1/4	2-1/4	6-32 x 3/8	.019-.025
BX-100-6	103-EB		1-15/16	1-13/16	2-7/16	1-3/8	1-1/4		1/4	1-15/16	6-32 x 3/8	.019-.025
BX-100-7	108-FA		2-5/16	2-1/16	3-1/8	1-11/16	1-7/16		1/4	2-5/8	6-32 x 3/8	.019-.025
BX-100-8	108-FB		2-5/16	2-1/16	2-1/2	1-11/16	1-7/16		1/4	2	6-32 x 3/8	.019-.025
BX-100-9	104-GA		2-3/4	2-3/8	3-13/16	2-1/8	1-3/4		15/64	3-11/32	6-32 x 3/8	.019-.025
BX-100-10	104-GB		2-3/4	2-3/8	2-13/16	2-1/8	1-3/4		15/64	2-11/32	6-32 x 3/8	.019-.025
BX-100-11	107-HA		3-1/16	2-5/8	4-1/4	2-19/64	1-55/64		23/64	3-17/32	8-32 x 3/8	.032-.037
BX-100-12	107-HB		3-1/16	2-5/8	3-3/16	2-19/64	1-55/64		23/64	2-15/32	8-32 x 3/8	.032-.037
BX-100-13	109-JA		3-9/16	3-1/16	4-7/8	2-5/8	2-1/8		23/64	4-5/32	8-32 x 3/8	.032-.037
BX-100-14	109-JB		3-9/16	3-1/16	3-7/8	2-5/8	2-1/8		23/64	3-5/32	8-32 x 3/8	.032-.037
BX-100-15	110-KA		3-15/16	3-3/8	5-1/4	3	2-7/16		23/64	4-17/32	10-32 x 1/2	.032-.037
BX-100-16	110-KB		3-15/16	3-3/8	4-5/16	3	2-7/16		23/64	3-19/32	10-32 x 1/2	.032-.037
BX-100-17	111-LA		4-5/16	3-11/16	5-9/16	3-5/16	2-11/16		3/8	4-13/16	10-32 x 1/2	.032-.037
BX-100-18	111-LB		4-5/16	3-11/16	4-1/2	3-5/16	2-11/16		3/8	3-3/8	10-32 x 1/2	.032-.037
BX-100-19	112-MA		4-11/16	4	6	3-11/16	3		3/8	5-1/4	1/4-20 x 5/8	.032-.037
BX-100-20	112-MB		4-11/16	4	4-15/16	3-11/16	3		3/8	4-3/16	1/4-20 x 5/8	.032-.037
BX-100-21	113-NA		5-1/16	4-5/16	6-13/16	4-1/16	3-5/16		25/64	6-1/64	1/4-20 x 5/8	.032-.037
BX-100-22	113-NB		5-1/16	4-5/16	5-1/2	4-1/16	3-5/16		25/64	4-45/64	1/4-20 x 5/8	.032-.037
BX-100-23	OA		5-1/2	4-1/2	6-3/4	3-3/4	3		25/64	5-1/32	1/4-20 x 5/8	.032-.037



* Covers for BX-100-17 thru 23 are .048 Gauge.

Dimension for Two Stud Mtg.

NOTE- Cases & Covers shall be Hot-Tinned. Studs shall be Single or Double Ended. Add Letter S for Single End or D for Double End. EXAMPLE - BX-100-6S

Unit shall be in accordance with MIL-T-27A & Amend.

TOLERANCES		
ON DIM.	FOR	TOL.
A & B	BX-100-1, 2, 3, 4	+0 - 1/16
A & B	BX-100-5 to BX-100-23	+0 - 1/8
C	BX-100-1, 2, 3, 4	+0 - 1/8
C	BX-100-5 to BX-100-23	+0 - 3/16
D & E	BX-100-4 to BX-100-14	+1/64 - 1/64
D & E	BX-100-15 to BX-100-18	+1/32 - 1/32
D & E	BX-100-19 to BX-100-23	+3/64 - 3/64
T (Length)	1/2 Long or Less	+1/16 - 1/16
T (Length)	MORE THAN 1/2 LONG	+1/8 - 1/8

ISSUE	ITEM	CHANGED FROM	DATE	CH. NO.	DRAFTS	CHECKER	ENG. APP.
E	1	TOLERANCES ADDED (PER SPEC)	4/3/58	5	16	JAS	AME
D	1	REDWN-HOLE PATT'N. DELE, DIM'S. CHG'D, BX-100-3 WAS TYPE AK, BX-100-23 ADDED. ALL CHG'S. MADE TO CONFORM TO NEW MIL-T-27	1/3/58	4	16	JAS	AME

REQ. ITEM		PART NO.	DESCRIPTION	SYMBOL
#		#	THE TECHNICAL MATERIEL CORP. MAMARONECK. NEW YORK	
#		#	CASE & COVERS	
#		#	STEEL	
#		#	MATERIAL	
#		#	16 1/3/58	JAS AME
#		#	HOT TINNED	
#		#	FINISH & SPE. NO.	
#		#	ELEC. DES. APP.	
#		#	MECH. DES. APP.	
#		#	BX-100	E