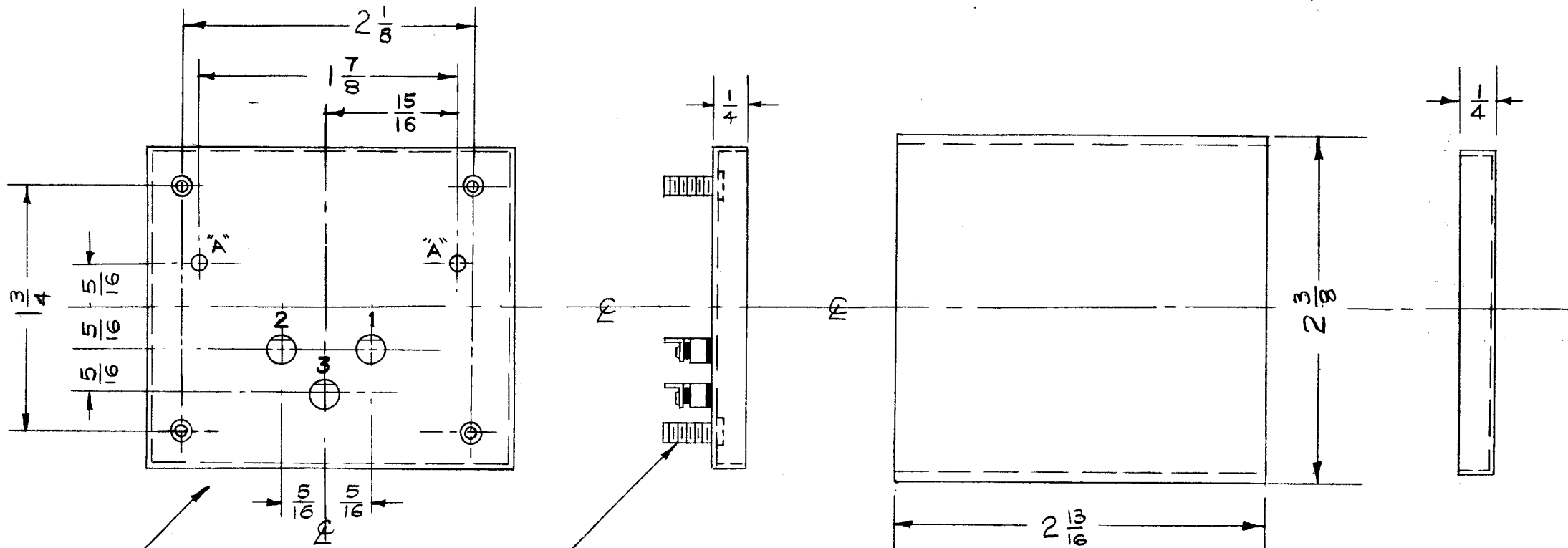


"A" HOLE $\frac{1}{8}$ (.125) 2 REQ.



METAL STAMP AS SHOWN-
1, 2, & 3

6 - 32 X 3/8 STUDS
SINGLE END STUDS.

NOTICE TO PERSONS RECEIVING THIS DRAWING

THE TECHNICAL MATERIEL CORPORATION claims proprietary right in the material disclosed hereon. This drawing is issued in confidence for engineering information only and may not be reproduced or used to manufacture anything shown hereon without permission from THE TECHNICAL MATERIEL CORPORATION to the user. This drawing is loaned for mutual assistance and is subject to recall at any time.

Property of:

THE TECHNICAL MATERIEL CORPORATION
MAMARONECK, NEW YORK

HELDOR CAN NO. 104GB (TMC NO. BX-100-105)
HELDOR TERMINAL NO. 250E (TMC NO. TE-134)

REF. HELDOR MFG. CO.

ISSUE	ITEM	CHANGED FROM	DATE	CH. NO.	DRAFTS	CHECKER	ENG. APP.
A	1	O/A DIM. CHGD FROM 2-19/64 x 2-43/64 TO 2-3/8 x 2-3/4 ACC. TO MIL-T-27A	1/4/58	1	16	J.M.C.	[Signature]
TOLERANCES		SCALE:					
DEC. DIM. \pm		MAXIMUM ALLOWABLE TOLERANCES HAVE BEEN DETERMINED AND ANY DEVIATIONS WILL BE CAUSE FOR REJECTION.					
FRAC. DIM. \pm		REMOVE ALL BURRS AND SHARP EDGES					
ANGULAR DIM. \pm							

REQ. PER UNIT	FX-153	PROJECT NO.	A-140B	DATE	3-29-57
	MODEL		ASS'Y. NO.		
USED ON					

REQ. ITEM	PART NO.	DESCRIPTION	SYMBOL
.019 - .025		THE TECHNICAL MATERIEL CORP.	
	STOCK SIZE	MAMARONECK, NEW YORK	
	STEEL	CASE & COVERS	
	MATERIAL		
		SC. 3-29-57 164-4-57	A. J. J.
		DRAWN	CHECKED
		FINAL APPROVAL	
		BX-152 A	
		ELEC. DES. APP.	MECH. DES. APP.