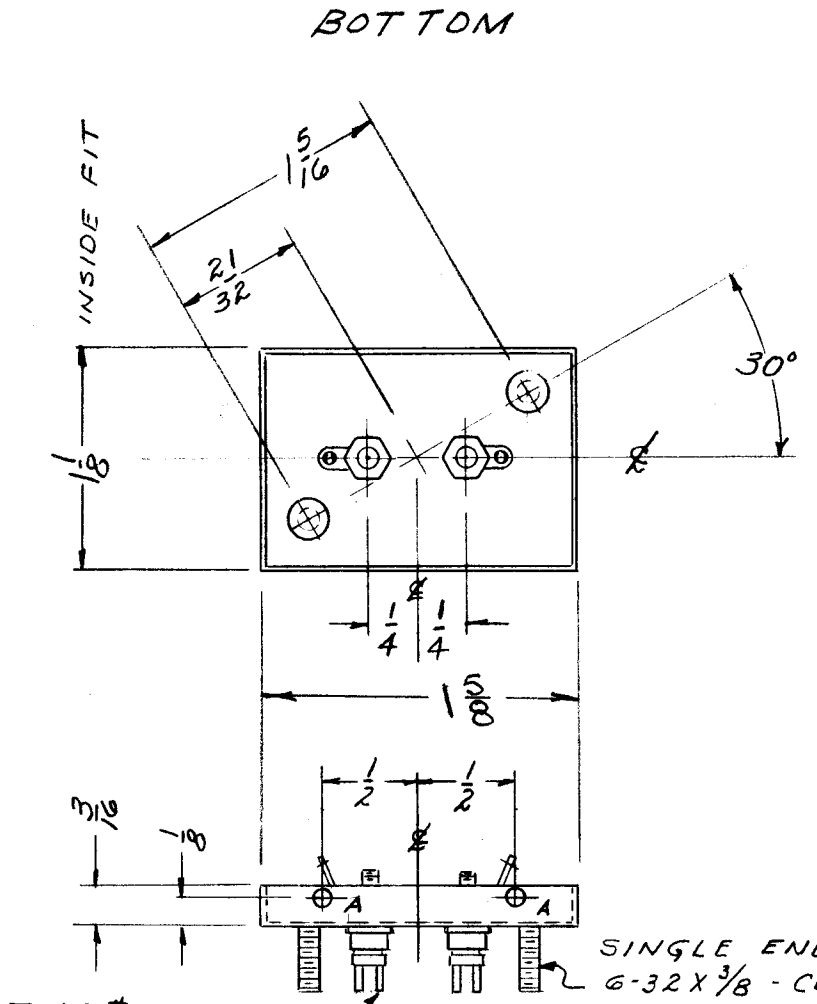
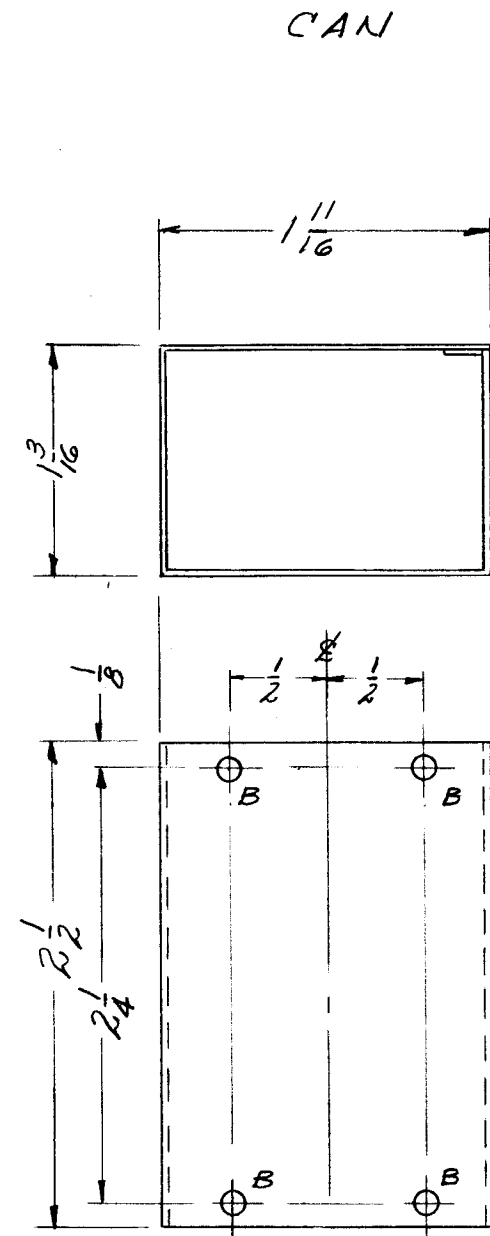
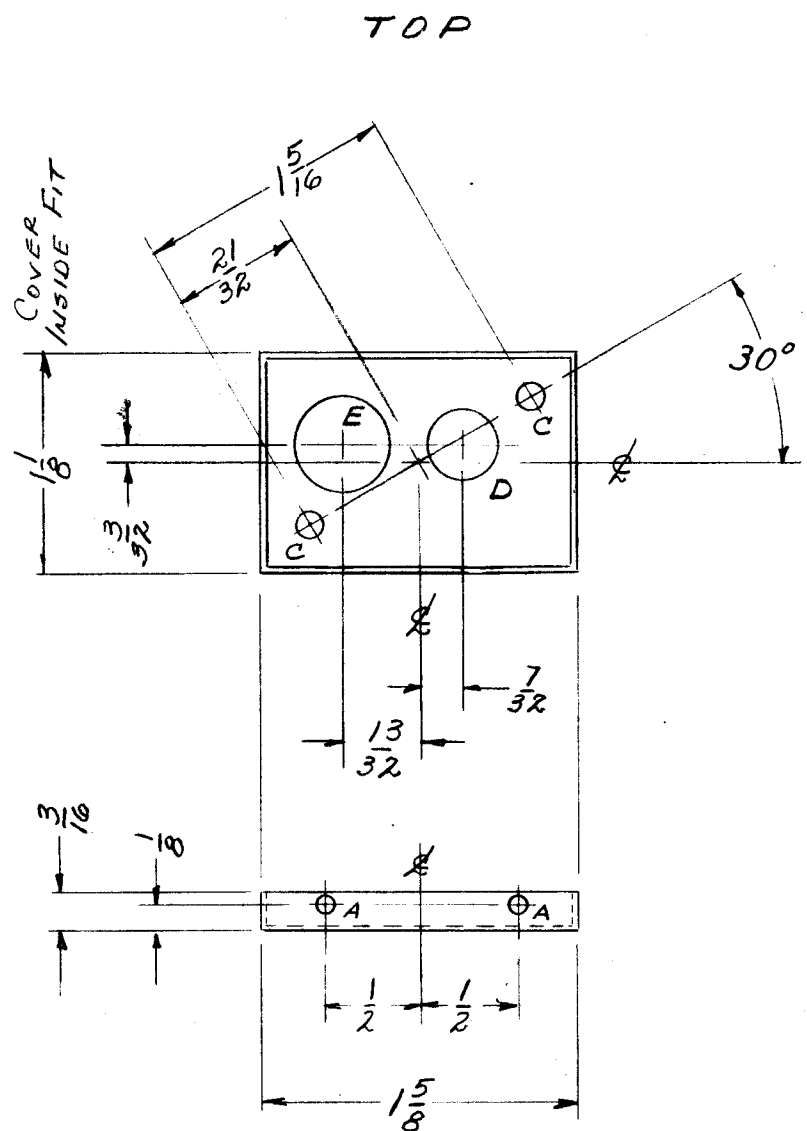
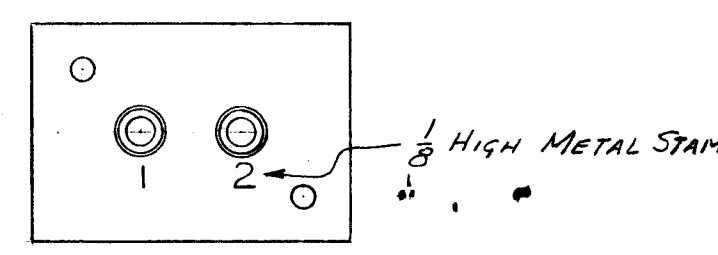


BX-170



TERMINAL-TMC # TE-101-1 HELDOR-250-D-2 REQ
 SINGLE END STUD; 6-32 X 3/8 - CLASS 2 - 2 REQ.



NOTICE TO PERSONS RECEIVING THIS DRAWING
 THE TECHNICAL MATERIEL CORPORATION claims proprietary right in the material disclosed hereon. This drawing is issued in confidence for engineering information only and may not be reproduced or used to manufacture anything shown hereon without permission from THE TECHNICAL MATERIEL CORPORATION to the user. This drawing is loaned for mutual assistance and is subject to recall at any time.

Property of:
 THE TECHNICAL MATERIEL CORPORATION
 MAMARONECK, NEW YORK

HOLE LEGEND

- A- # 49 DR. (.073) DIA. 8- REQ.
- B- 3/32 (.093) DIA - 8- REQ.
- C- # 32 DR. (.116) DIA - 2- REQ.
- D- 3/8 (.375) DIA - 1- REQ.
- E- 1/2 (.500) DIA - 1- REQ.

NOTE: HELDOR FINISH - HOT TINNED DIP.
 UNIT WILL BE FINISHED BY TMC AS FOLLOWS:
 S114 - ZINC CHROMATE PRIMER } OUTSIDE SURFACES EXCEPT
 S115 - TMC SMOOTH GRAY ENAMEL } SIDES OF TOP & BOTTOM
 PCS.
 REF: HELDOR

ISSUE	ITEM	CHANGED FROM	DATE	CH. NO.	DRAFTS	CHECKER	ENG. APP.
TOLERANCES							
DEC. DIM. ± .010			SCALE: FULL SIZE				
FRAC. DIM. ± 1/64			MAXIMUM ALLOWABLE TOLERANCES HAVE BEEN DETERMINED AND ANY DEVIATIONS WILL BE CAUSE FOR REJECTION.				
ANGULAR DIM. ±			REMOVE ALL BURRS AND SHARP EDGES				

1	A-1591			11-4-58
REQ. PER UNIT	MODEL	PROJECT NO.	ASS'Y. NO.	DATE
USED ON				

REQ. ITEM	PART NO.	DESCRIPTION	SYMBOL
.025 THICK		THE TECHNICAL MATERIEL CORP.	
STOCK SIZE		MAMARONECK, NEW YORK	
STEEL		CASE & COVER	
MATERIAL		11-4-58	
TYPE & TEMPER		16	
HEAT TREAT. SPEC.			
FINISH & SPEC. NO.			
SEE NOTE			
ELEC. DES. APP.			
MECH. DES. APP.			
			BX-170