

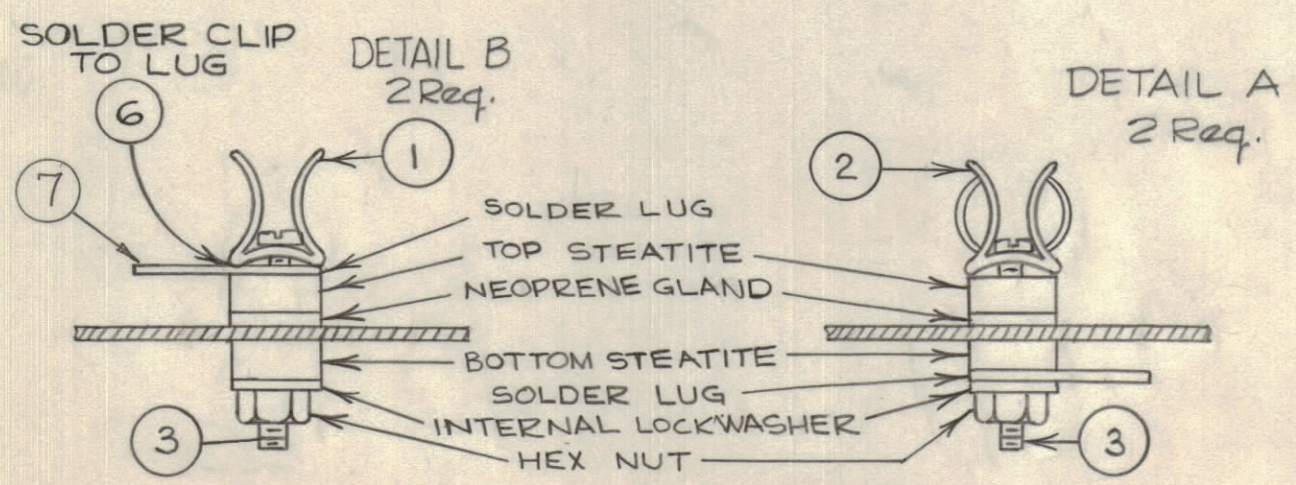
IF IT IS FOUND DESIRABLE TO CHANGE ANY TOLERANCE OR OTHER DETAIL SPECIFIED ON THIS DRAWING NOTIFY THE PURCHASER PROMPTLY.		DIMENSIONS IN INCHES UNLESS OTHERWISE SPECIFIED					
MAXIMUM ALLOWABLE TOLERANCES HAVE BEEN DETERMINED AND DEVIATIONS WILL BE CAUSE FOR REJECTION. REMOVE ALL BURRS AND SHARP EDGES.							
ISSUE	ITEM	CHANGED FROM	DATE	CN. NO.	DRAFTS	CHECKER	ENG. APP.
A	1	Side Terminal Deleted	7/7/61	5206	M.F.F.	J.C.P.	M.K.S.
	2	BX 148 Ref Deleted					
	3	Ref. Note For BX-100-12 Added					
B	1	ITEM 7 ADDED	7/27/61	5335	D.R.	J.C.P.	S.M.
	2	PICTORIAL CLARIFIED					

NOTICE TO PERSONS RECEIVING THIS DRAWING

THE TECHNICAL MATERIEL CORPORATION claims proprietary right in the material disclosed hereon. This drawing is issued in confidence for engineering information only and may not be reproduced or used to manufacture anything shown hereon without permission from THE TECHNICAL MATERIEL CORPORATION to the user. This drawing is loaned for mutual assistance and is subject to recall at any time.

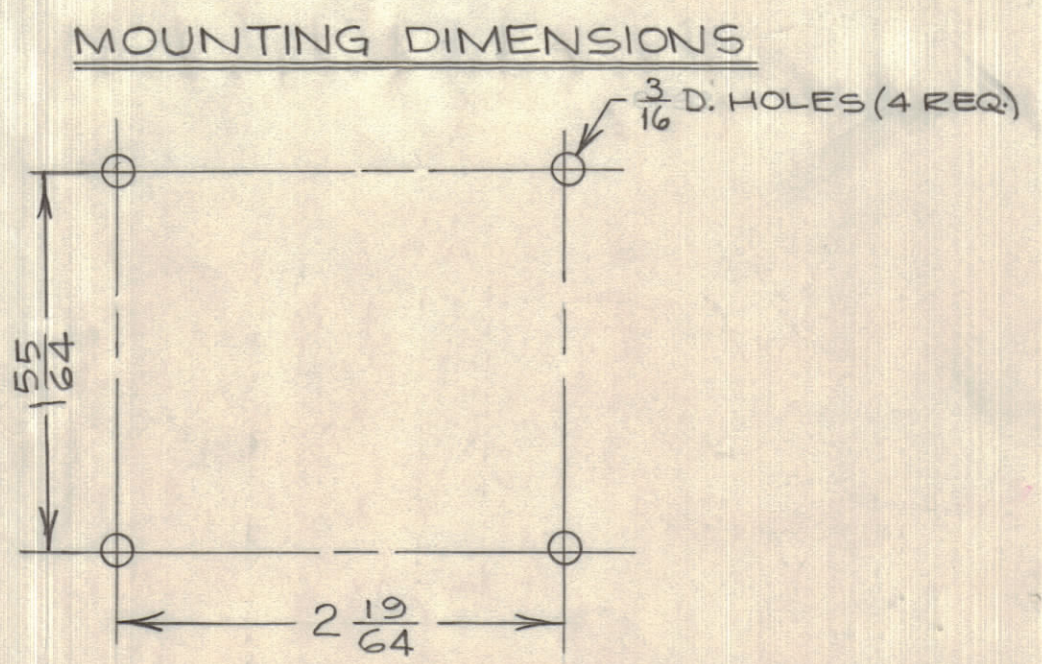
Property of:
THE TECHNICAL MATERIEL CORPORATION
MAMARONECK, NEW YORK

REQ.	ITEM	PART NO.	DESCRIPTION	SYMBOL
2	1	FC-102-1-XX-C	Fuse clip: earless	
2	2	FC-102-1-X-C	Fuse clip: ears	
4	3	SCBS0440BN16	Screw: machine	
4	4	DELETED	Bushing: slotted	
6	5	TE-101-2	Bushing: slotted	
A/R	6	BS-100	Solder: soft	
2	7	TE-128-1	TERMINAL LOCKING, DUAL TERMINAL	
1	8	SCBS0632BN4	Screw	
1	9	NTH0632BN4	Nut	
1	10	TE-104-2	Solder Lug	

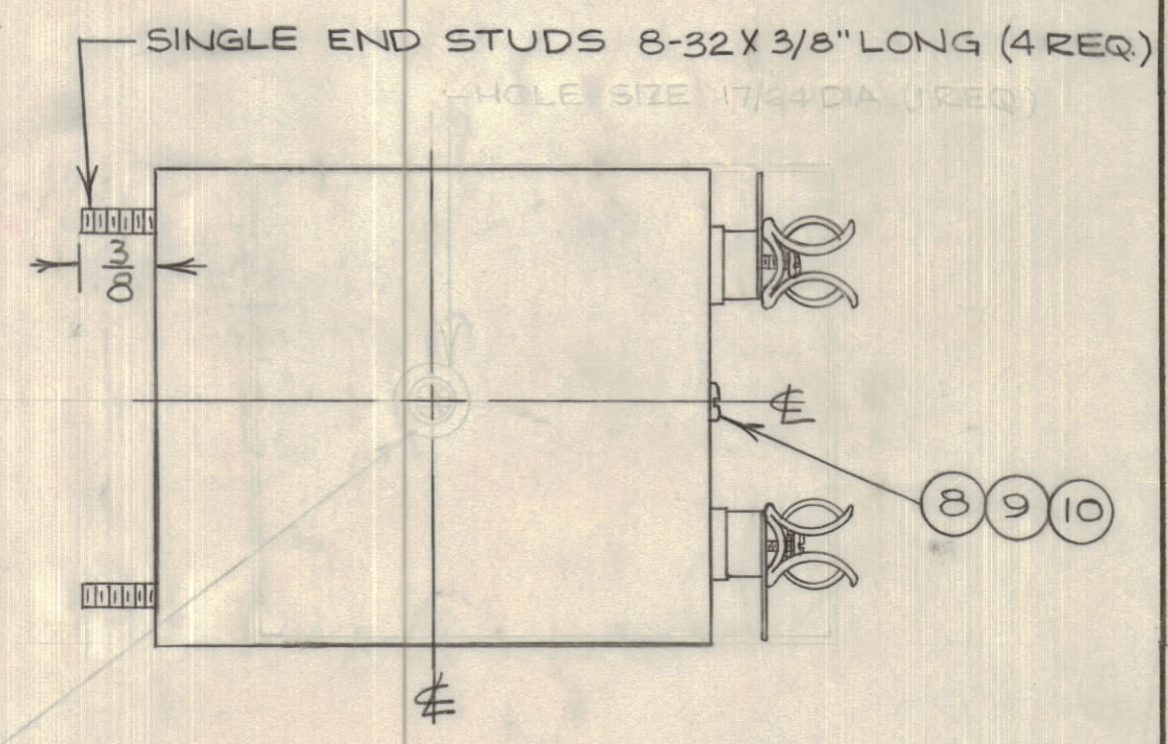
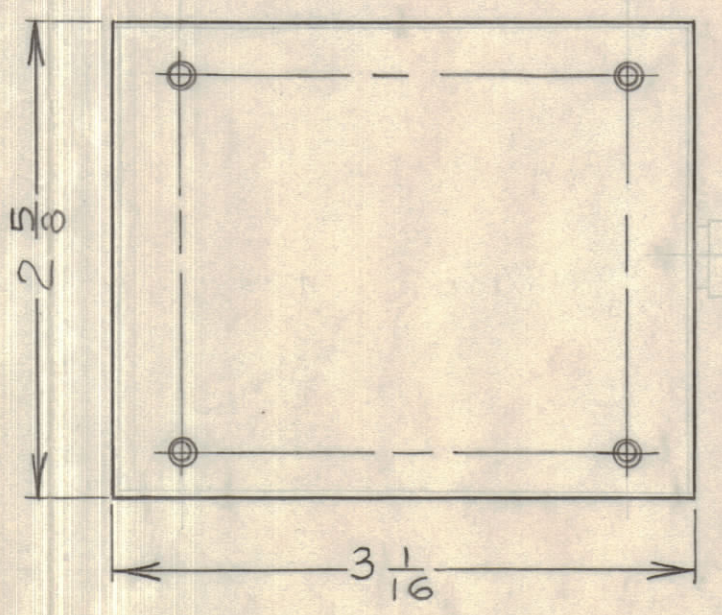
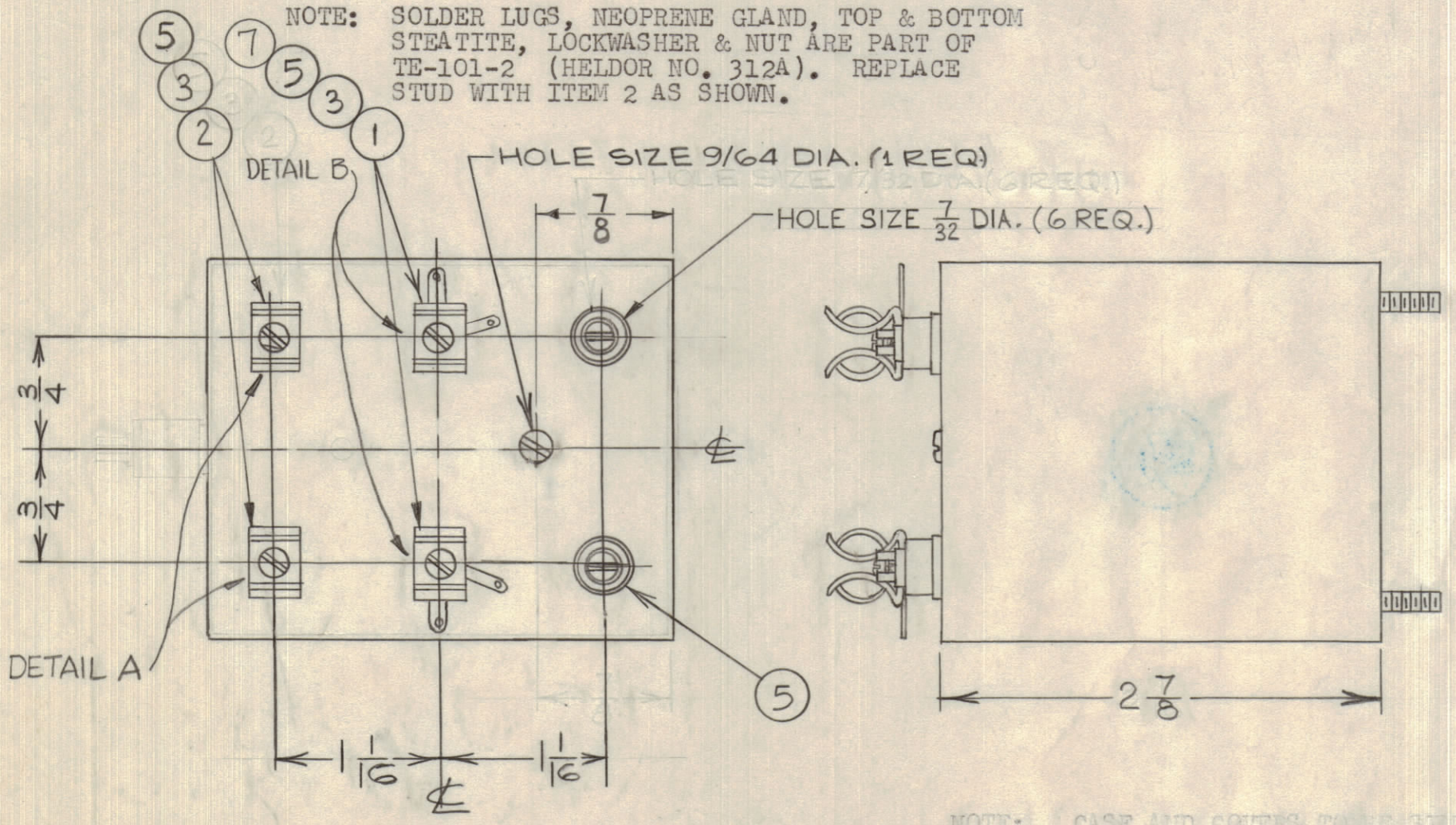


DETAIL - CLIP MOUNTING

NOTE: SOLDER LUGS, NEOPRENE GLAND, TOP & BOTTOM STEATITE, LOCKWASHER & NUT ARE PART OF TE-101-2 (HELDOR NO. 312A). REPLACE STUD WITH ITEM 2 AS SHOWN.



BX10010 B



NOTE: CASE AND COVERS TO BE SIMILAR TO BX-148.

NOTE: CASE & COVERS TO BE SIMILAR IN MATERIAL & CONSTRUCTION TO BX-100-12 (HELDOR NO. 107-HB).

REF: BX148 (MIL-T-27A)

TOLERANCES		SCALE: NTS
ALL OTHERS	DEC. DIM. ± FRAC. DIM. ± ANGULAR DIM. ±	DRILL, PUNCH, COMMERCIAL STOCK SIZES AND MANUFACTURERS TOLERANCES ARE NOT INCLUDED.

TRO89	E2570-2	June 29/61
MODEL	PROJECT NO.	DATE

.032/.037	TMC (Canada) LIMITED	
STOCK SIZE	OTTAWA	ONTARIO
STEEL	CASE AND COVER	
MATERIAL	ASSEMBLY	
HOT TIN DIPPED	J.P.C.	P.W.Y.
TYPE & TEMPER	DRWN	ELEC. DES. APP.
	CHECKED	MECH. DES. APP.
HEAT TREAT. SPEC.	FINAL APPROVAL	
NONE	BX10010 B	
FINISH & SPEC. NO.		