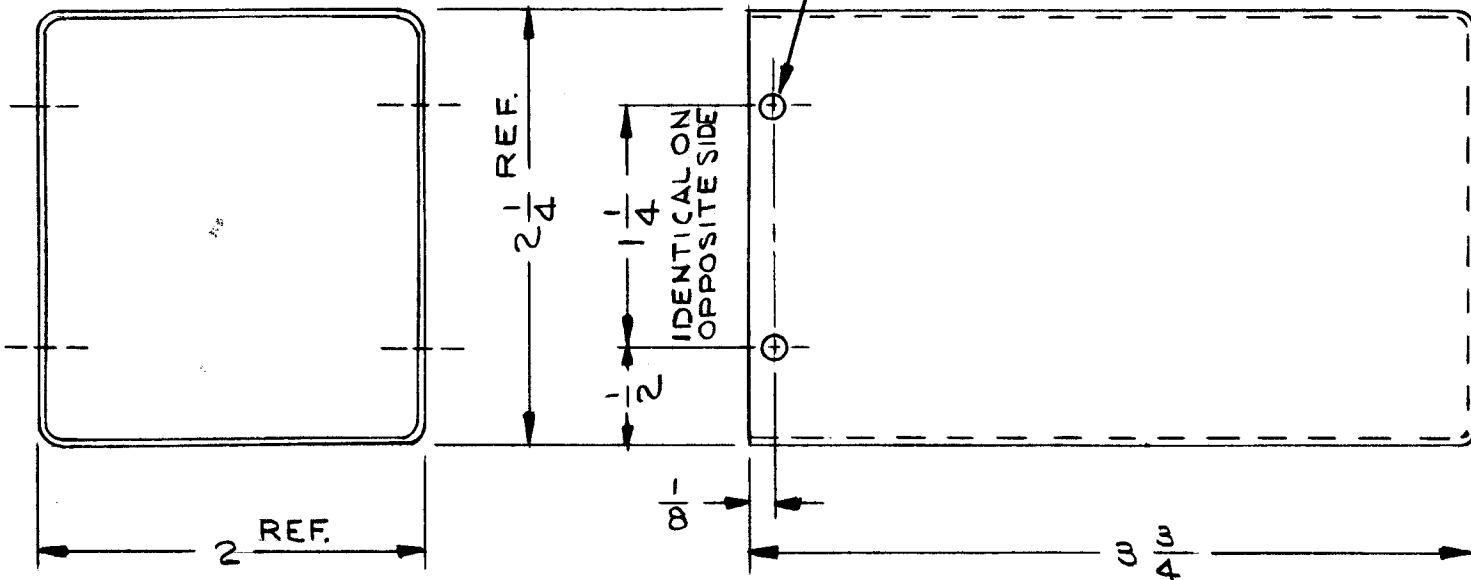


CASE (HU-6925-AL)

1/8 DIA HOLES
4-PLACES



BX 213 C

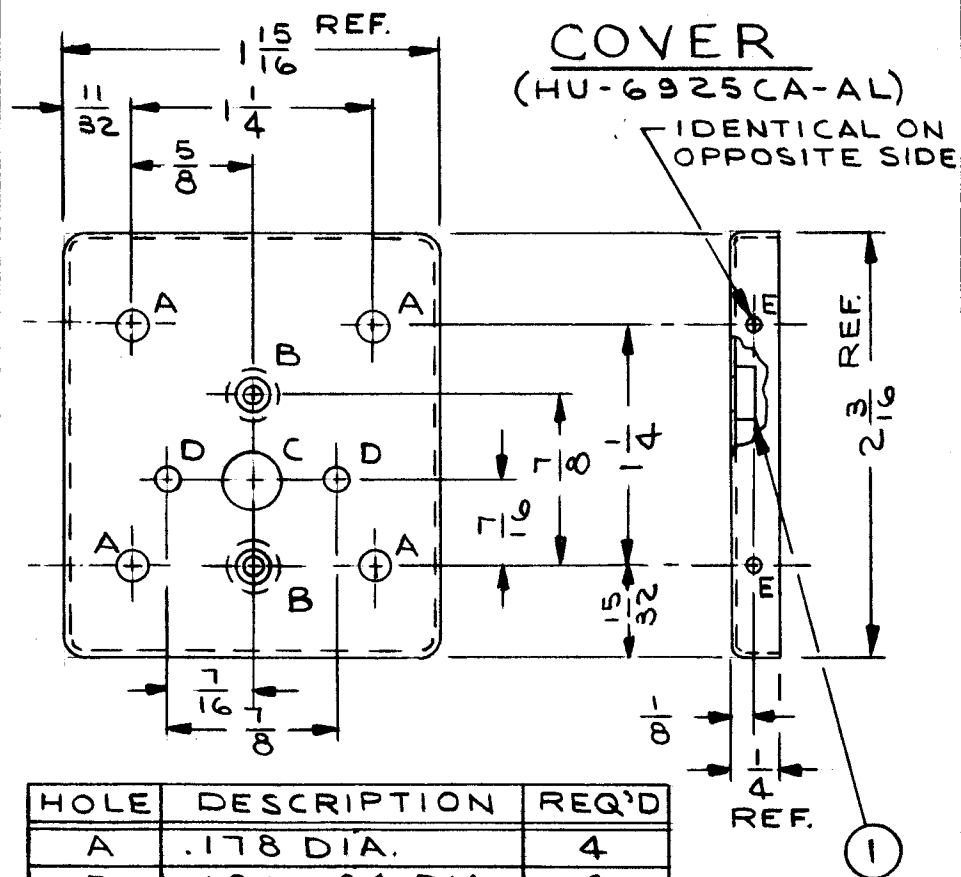
REVISIONS

SYM	DESCRIPTION	DATE	E.M.N. NO.	DRAFT	CHKD	APPD
O	ORIGINAL RELEASE	5/12/64	#	J.L.	@	
A	IT.1 WAS NT129-632-1	6.8.64	11511	ASB	@	
B	MAT'L & FINISH NOTES ADDED "THIS SURFACE UNPAINTED" NOTE ADDED	8.8.64	12018	ASB	MP	
C	IT.1 WAS 1 REQ. SYM 'B' ADDED, 'B'-HOLES WAS 1 REQ. 'B'-HOLE ADD. TO COVER & COVER SUB-ASSY	11.5.64	12870	ASB	@	MMH

FINISH NOTE:

- S404 ALL OUTSIDE SURFACES
- S114 & S115 CASE ONLY.

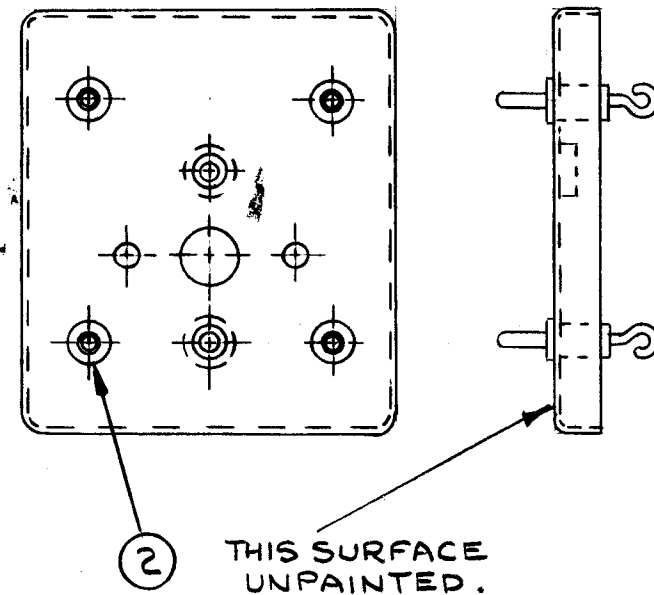
COVER (HU-6925CA-AL)



HOLE	DESCRIPTION	REQ'D
A	.178 DIA.	4
B	.191-194 DIA	2
C	5/16 DIA	1
D	9/64 DIA	2
E	N#50 (.070) DR.	4

NOTES

COVER SUB-ASSY



1	GPR-92	
Q'TY./UNIT	MODEL USED ON	ASS'Y. NO.
SCALE 1:1	CODE A	S401-28

THE CONTENTS OF THIS DRAWING ARE THE EXCLUSIVE PROPERTY OF THE TECHNICAL MATERIEL CORP. ITS UNAUTHORIZED USE OR REPRODUCTION IN WHOLE OR IN PART IS STRICTLY FORBIDDEN.

REQ'D.	ITEM	PART NUMBER	DESCRIPTION	SYMBOL
4	2	PL 217-1	PLUG, TIP, SUB-MINATURE	
2	1	NT 129-632-2	NUT, ROUND, SWAGE TYPE	B

LIST OF MATERIAL

MATERIAL ALUMINUM	THE TECHNICAL MATERIEL CORP. MAMARONECK, NEW YORK		
FINISH SEE NOTE	TITLE CASE & COVER		
UNLESS OTHERWISE SPECIFIED DIMENSIONS ARE IN INCHES AND INCLUDE CHEMICALLY APPLIED OR PLATED FINISHES	DRAWN J. LESHINSKI	DATE 5/12/64	FINAL APPROVAL DATE 5/13/64
DECIMALS .X ± .05 .XX ± .01 .XXX ± .005	TOLERANCES	FRACTIONS ± 1/64 ANGLES ± 0° 30'	DATE 5/12/64
ELECT. DES. MECH. DES.		DATE	DATE
SHEET		REV. LTR.	

BX 213 C