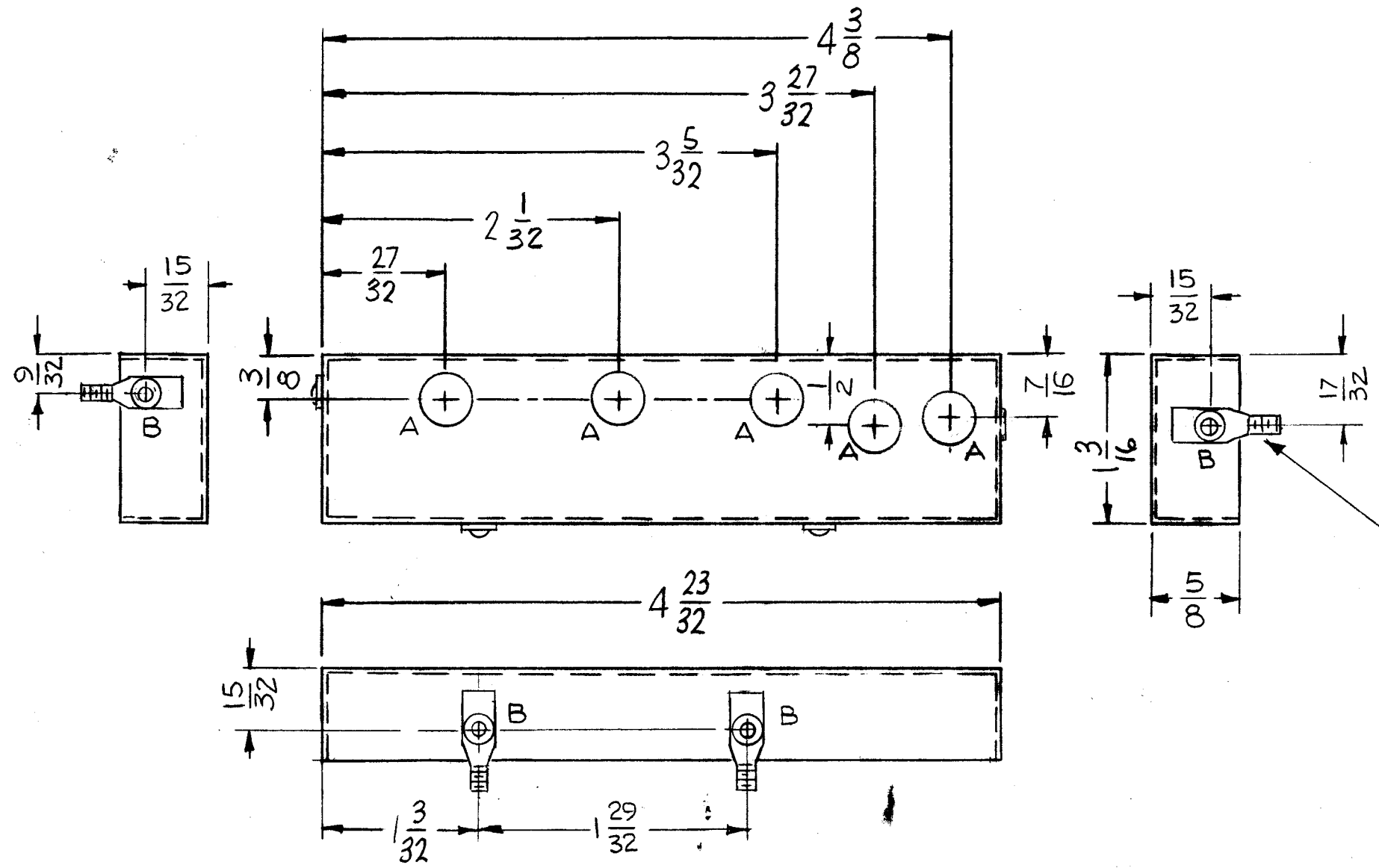


REVISIONS						
ZONE	LTR	DESCRIPTION	DATE	E.M.N.NO	DRAFT	CHKD APPD
X		EXP. RELEASE	6-7-67		LWT	
X1		REVISED & UPDATED	8-21-67		G.D.L.	
X2		DIM. 13/32 WAS 7/16 - DIM 3/8 WAS 7/16 DIM 7/16 WAS 1/2 - DIA "A" HOLE WAS 1/4	10-24-67		G.D.L.	
X3		REVISED & UPDATED	12-19-67		G.D.L.	
Ø		ORIG. RELEASE FOR PROD.	1-2-68		R.G.	



~ HOLE ~
 A - 3/8 DIA (5 REQ)
 B - .067 DIA (4 REQ.)

1 2 MOUNT IN ALL "B" HOLES

- UNLESS OTHERWISE SPECIFIED:
1. USE MATERIAL THICKNESS FOR MAXIMUM RADIUS ON ALL BENDS
 2. ALL ANGULAR BENDS 90 DEGREES
 3. REMOVE ALL BURRS AND SHARP EDGES
 4. MOUNT INSERTS AFTER FINISHING

1	CHG-() 4	A4505
1	MMX-()	A4505
QTY / UNIT	MODEL USED ON	ASS'Y NO.
APPLICATION		
	CODE	S401-451
	A	
NOTICE TO PERSONS RECEIVING THIS DRAWING THE TECHNICAL MATERIEL CORPORATION claims proprietary right in the material disclosed hereon. This drawing is issued in confidence for engineering information only and may not be reproduced or used to manufacture anything shown hereon without permission from THE TECHNICAL MATERIEL CORPORATION to the user. This drawing is loaned for mutual assistance and is subject to recall at any time.		
MATERIAL		
Ø22 C.R. COPPER		
FINISH		
TIN PLATE		

UNLESS OTHERWISE SPECIFIED DIMENSIONS ARE IN INCHES AND INCLUDE CHEMICALLY APPLIED OR PLATED FINISHES		FINAL APPROVAL	DATE
DECIMALS	FRACTIONS	<i>[Signature]</i>	1-3-68
.X ± .05	1/64	MECH. DES.	DATE
.XX ± .01	TOLS. ANGLES	ELECT. DES.	DATE
.XXX ± .005	0° .30'	<i>[Signature]</i>	12-29-67
MATERIAL		CHECKED	DATE
Ø22 C.R. COPPER		<i>[Signature]</i>	1-7-68
FINISH		DRAWN	DATE
TIN PLATE		LWT	6-7-67
		M/L	DATE

4	2	EY 101-5	EYELET, MTL.	B
4	1	SC106-3	BOLT, EYE-SPADE	B
REQ'D	ITEM	PART NUMBER	DESCRIPTION	SYM.
O.POSE LIST OF MATERIAL SK 3246 MS1				
THE TECHNICAL MATERIEL CORP. MAMARONECK, NEW YORK				
SHIELD, GENERATOR, RF				
SIZE	CODE IDENT. NO.	DWG NO.	ISSUE	
B	82679	BX222	Ø	
SCALE 1:1		SHEET OF		