

5

4

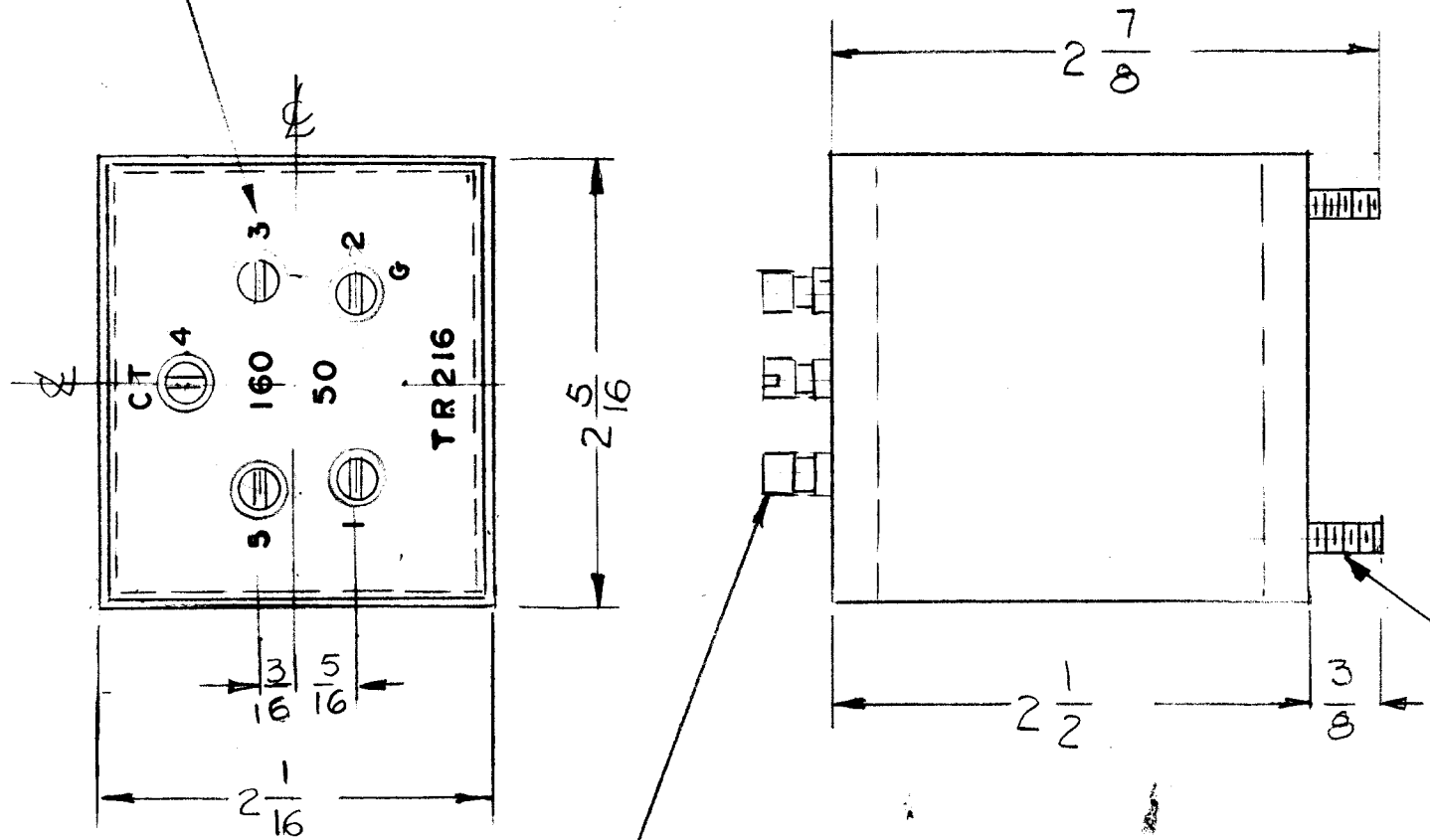
3

2

1

REVISIONS							
E.M.N. NO.	DRAFT	CHKD	ZONE	LTR	DESCRIPTION	DATE	APPROVED
					ORIGINAL RELEASE	12-4-91	<i>[Signature]</i>

MARK TMC 1/8 HIGH GOTHIC AS SHOWN



TE 101-2 5 REQ'D
(HELDOR NO. 312A)
MTG. HOLES 7/32 DIA

6-32 THD STUDS
4 REQ'D

DIMENSIONS FOR REF. ONLY

TMC-BX100-8

REF: HELDOR MFG. CO CAT. NO. 108 MODIFIED

REQ'D	ITEM	PART NUMBER	DESCRIPTION	SYM.
-------	------	-------------	-------------	------

LIST OF MATERIAL

QTY / UNIT	MODEL USED ON	ASS'Y NO.
APPLICATION		
	CODE	2A 5879

NOTICE TO PERSONS RECEIVING THIS DRAWING
THE TECHNICAL MATERIEL CORPORATION claims proprietary right in the material disclosed hereon. This drawing is issued in confidence for engineering information only and may not be reproduced or used to manufacture anything shown hereon without permission from THE TECHNICAL MATERIEL CORPORATION to the user. This drawing is loaned for mutual assistance and is subject to recall at any time.

UNLESS OTHERWISE SPECIFIED DIMENSIONS ARE IN INCHES AND INCLUDE CHEMICALLY APPLIED OR PLATED FINISHES	
DECIMALS .X ± .05 .XX ± .01 .XXX ± .005	FRACTIONS 1/64 ANGLES 0°-30'
MATERIAL .019-.025 STEEL HOT-TINNED FINISH -	

FINAL APPROVAL <i>[Signature]</i>	DATE 7/1/92
MECH. DES.	DATE
ELECT. DES.	DATE
CHECKED	DATE
DRAWN G.D.L.	DATE 12-4-91

THE TECHNICAL MATERIEL CORP. MAMARONECK, NEW YORK			
CASE & COVERS TRANSFORMER TR 216			
SIZE B	CODE IDENT. NO. 82679	DWG NO. BX 239	ISSUE Ø
SCALE 1:1		SHEET OF	

D

C

B

A

D

C

B

A