

IF IT IS FOUND DESIRABLE TO CHANGE ANY TOLERANCE OR OTHER DETAIL SPECIFIED ON THIS DRAWING NOTIFY THE PURCHASER PROMPTLY.

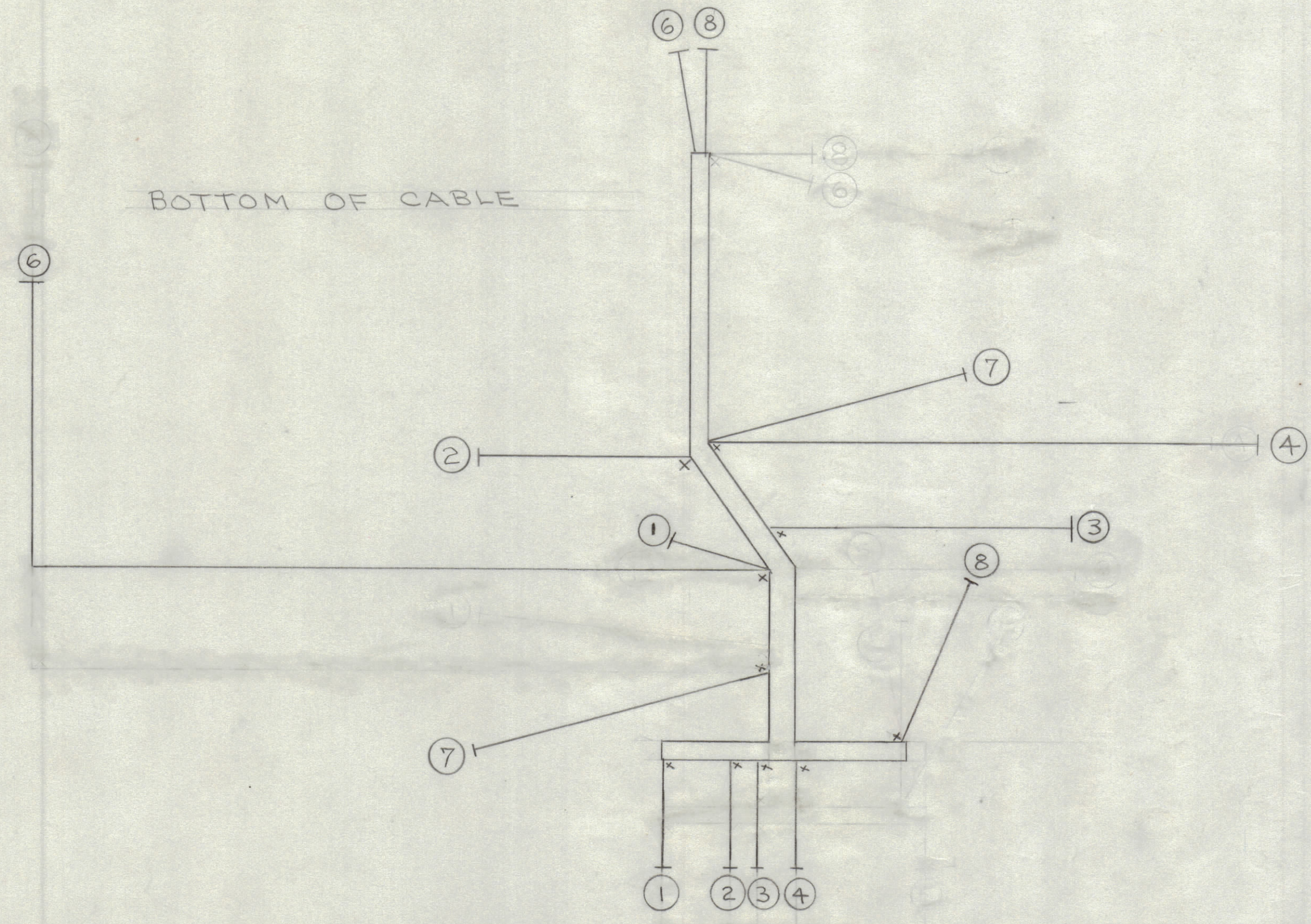
MAXIMUM ALLOWABLE TOLERANCES HAVE BEEN DETERMINED AND DEVIATIONS WILL BE CAUSE FOR REJECTION. REMOVE ALL BURRS AND SHARP EDGES

NOTICE TO PERSONS RECEIVING THIS DRAWING

THE TECHNICAL MATERIEL CORPORATION claims proprietary right in the material disclosed hereon. This drawing is issued in confidence for engineering information only and may not be reproduced or used to manufacture anything shown hereon without permission from THE TECHNICAL MATERIEL CORPORATION to the user. This drawing is loaned for mutual assistance and is subject to recall at any time.

Property of:
THE TECHNICAL MATERIEL CORPORATION
 MAMARONECK, NEW YORK

| INDICATES NAIL AT END OF WIRE.
 X INDICATES NAIL AT BREAKOUT OR BEND.
 ALL WIRE LENGTHS ALLOW 1/2" EACH END FOR STRIPPING



CA-187 C

C	1	WIRES 6 & 8 RELOCATED	8/10/53	3	A.B.	GED	11/2
B	2	#5 DELETED	8/10/53	2	C.D.D.	JAS	11/2
A	1	REDRAWN LGTHS. CHGD.	8/10/53	1	C.D.D.	JAS	G.T.O
ISSUE	ITEM	CHANGED FROM	DATE	CN. NO.	DRAFTS	CHECKER	ENG. APP.

TOLERANCES: DRILL, PUNCH, COMMERCIAL STOCK SIZES AND MANUFACTURERS TOLERANCES ARE NOT INCLUDED.

ALL OTHERS: DEC. DIM. ±, FRAC. DIM. ±, ANGULAR DIM. ±

X	9	CD-100-1	CORD LACING, NYLON
11	8	SR1R 3/5(1) 22U 55	CABLE, INSULATED (GRN.)
9 1/4	7	SR1R 3/5(1) 22U 99	" " (WH.)
16 1/4	6	SR1R 3/5(1) 22U 94	" " (WH/YEL)
	5		DELETED
10 3/4	4	SR1R 3/5(1) 22U 11	CABLE, INSULATED (BRN.)
7 1/4	3	SR1R 3/5(1) 22U 95	" " (WH/GRN.)
7 1/2	2	SR1R 3/5(1) 22U 55	" " (GRN.)
6	1	SR1R 3/5(1) 22U 60	" " (BLUE)
REQ. ITEM	PART NO.	DESCRIPTION	SYMBOL
THE TECHNICAL MATERIEL CORP. MAMARONECK, NEW YORK			
STOCK SIZE			
CABLE ASSEMBLY			
MATERIAL WEIGHT PER PC.			
R. F.			
TYPE & TEMPER			
C.D.D. 7-10-53		G.T.O	
DRAWN		ELEC. DES. APP.	MECH. DES. APP.
M.A.P.		G.T.O	
CHECKED		FINAL APPROVAL	
		CA-187 C	
FINISH & SPEC. NO.			

DVM	199		7-10-53
MODEL	PROJECT NO.	ASSY. NO.	DATE
USED ON			