

IF IT IS FOUND DESIRABLE TO CHANGE ANY TOLERANCE OR OTHER DETAIL SPECIFIED ON THIS DRAWING NOTIFY THE PURCHASER PROMPTLY.

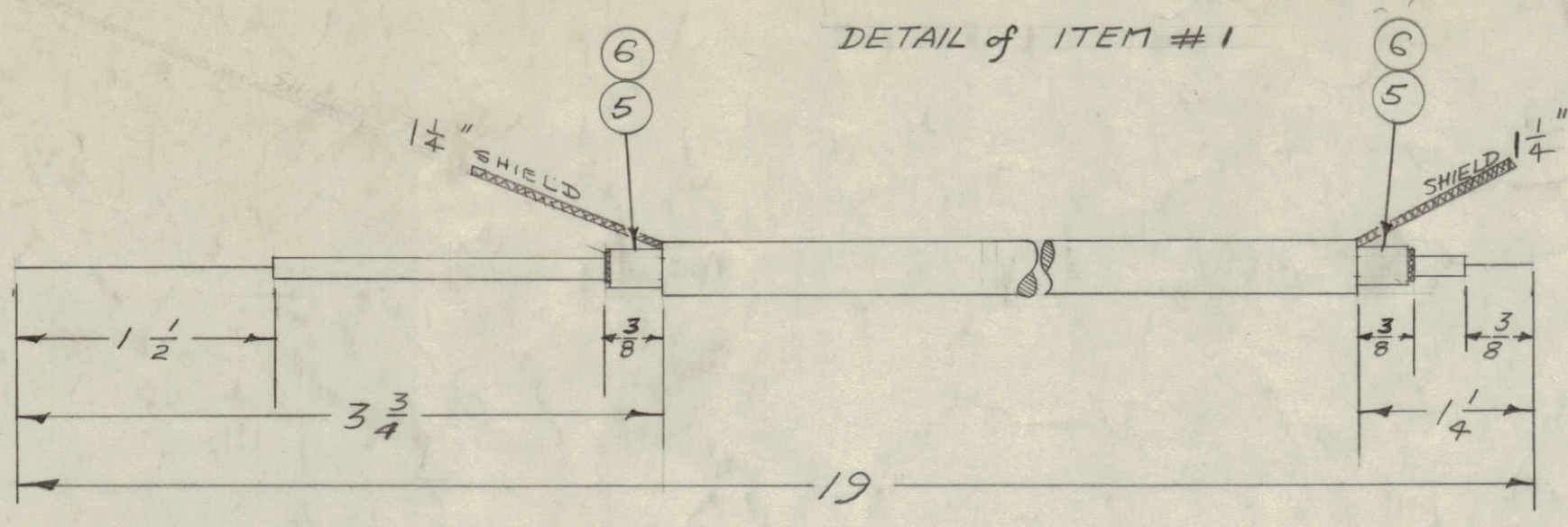
MAXIMUM ALLOWABLE TOLERANCES HAVE BEEN DETERMINED AND DEVIATIONS WILL BE CAUSE FOR REJECTION. REMOVE ALL BURRS AND SHARP EDGES

NOTICE TO PERSONS RECEIVING THIS DRAWING

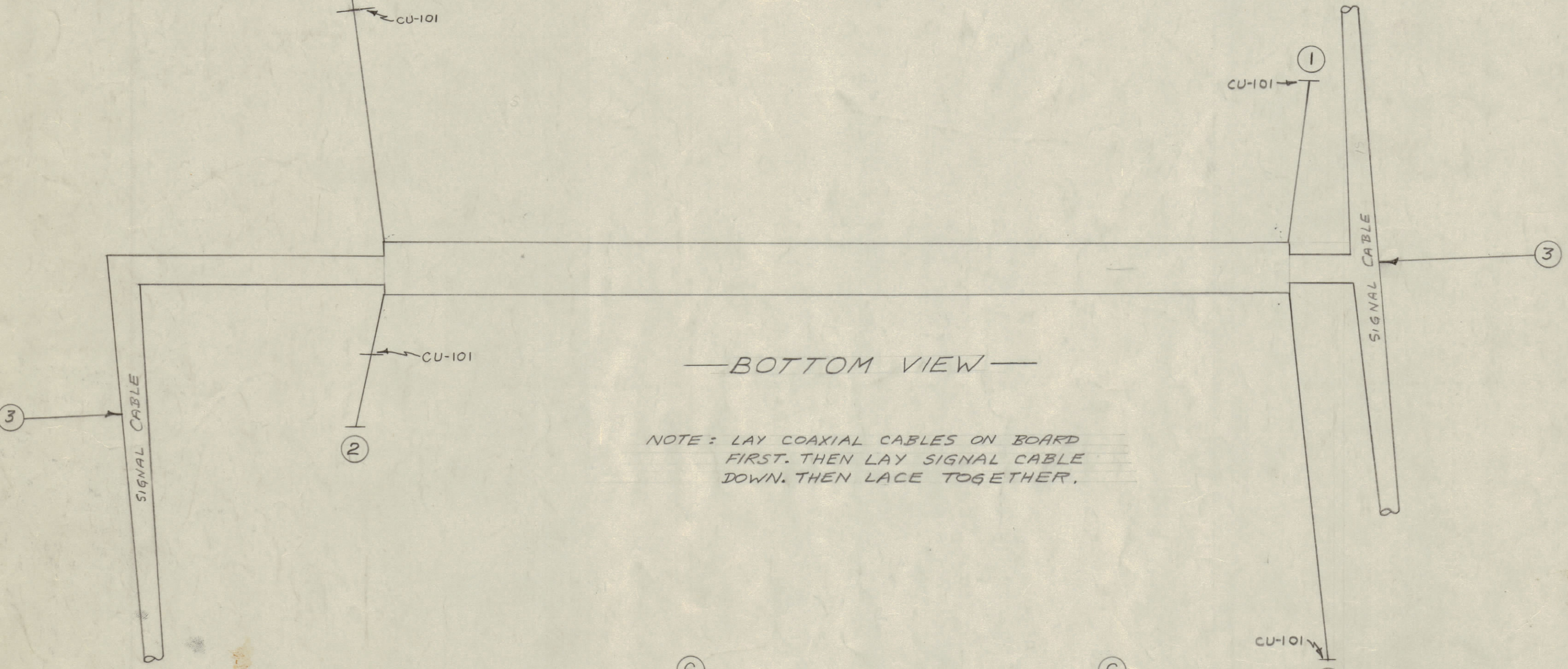
THE TECHNICAL MATERIEL CORPORATION claims proprietary right in the material disclosed hereon. This drawing is issued in confidence for engineering information only and may not be reproduced or used to manufacture anything shown hereon without permission from THE TECHNICAL MATERIEL CORPORATION to the user. This drawing is loaned for mutual assistance and is subject to recall at any time.

Property of:
THE TECHNICAL MATERIEL CORPORATION
MAMARONECK, NEW YORK

DETAIL of ITEM # 1

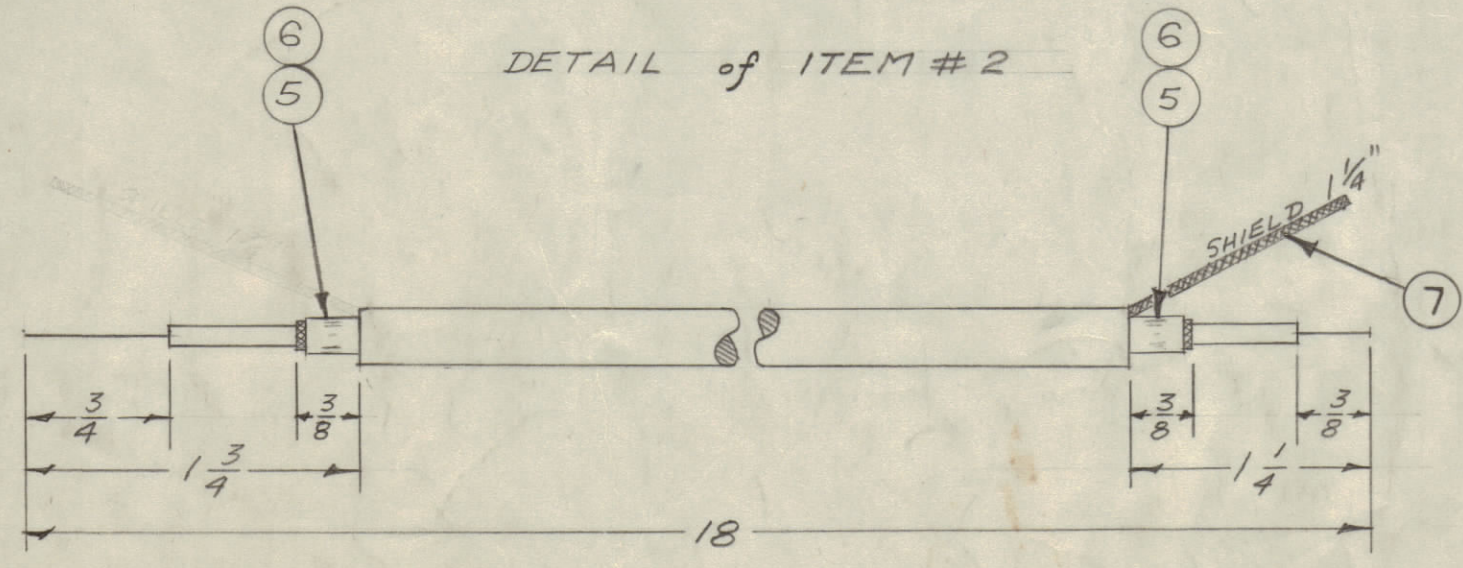


— BOTTOM VIEW —



NOTE: LAY COAXIAL CABLES ON BOARD FIRST. THEN LAY SIGNAL CABLE DOWN. THEN LACE TOGETHER.

DETAIL of ITEM # 2



CA-194 D

D		ADD ITB. IT7 REQ WAS X. IT 4 WAS CD100-2	11-26-56	17193	RME	WPA	WOB
C	1	ITEM 7 WAS 10" LONG. 3/8 DIM. ADDED TO DETAILS	12/3/56	A6	VG	WPA	WOB
B	3	1/4 WAS 1"	8/12/54	45	WPA	WOB	WOB
A	2	1/4 WAS 3/4					
A	1	ITEM 7 ADDED	2/24/54	44	VG	WPA	WOB

ISSUE	ITEM	CHANGED FROM	DATE	CN. NO.	DRAFTS	CHECKER	ENG. APP.
TOLERANCES		SCALE: FULL					
ALL OTHERS	DEC. DIM. ±	DRILL, PUNCH, COMMERCIAL STOCK SIZES AND MANUFACTURERS TOLERANCES ARE NOT INCLUDED.					
	FRAC. DIM. ±						
	ANGULAR DIM. ±						

X	8	BS100	SOLDER, TIN ALLOY
4"	7	WL-103-1	SHIELD, FLEX.
4	6	CU-101-2	FERRULE, OUTER
4	5	CU-101-1	FERRULE, INNER
X	4	CD101-1MW	LACING CORD
1	3	CA-151	SIGNAL CABLE
18"	2	RG-58/U	COAXIAL CABLE
19"	1	RG-58/U	COAXIAL CABLE

REQ.	ITEM	PART NO.	DESCRIPTION	SYMBOL
THE TECHNICAL MATERIEL CORP. MAMARONECK, NEW YORK				
STOCK SIZE				
MATERIAL WEIGHT PER PC.				
TYPE & TEMPER				
HEAT TREAT. SPEC.				
FINISH & SPEC. NO.				

1	XFK	A-690	10-28-53
QTY. PER UNIT	MODEL	PROJECT NO.	ASS'Y. NO.
USED ON			