

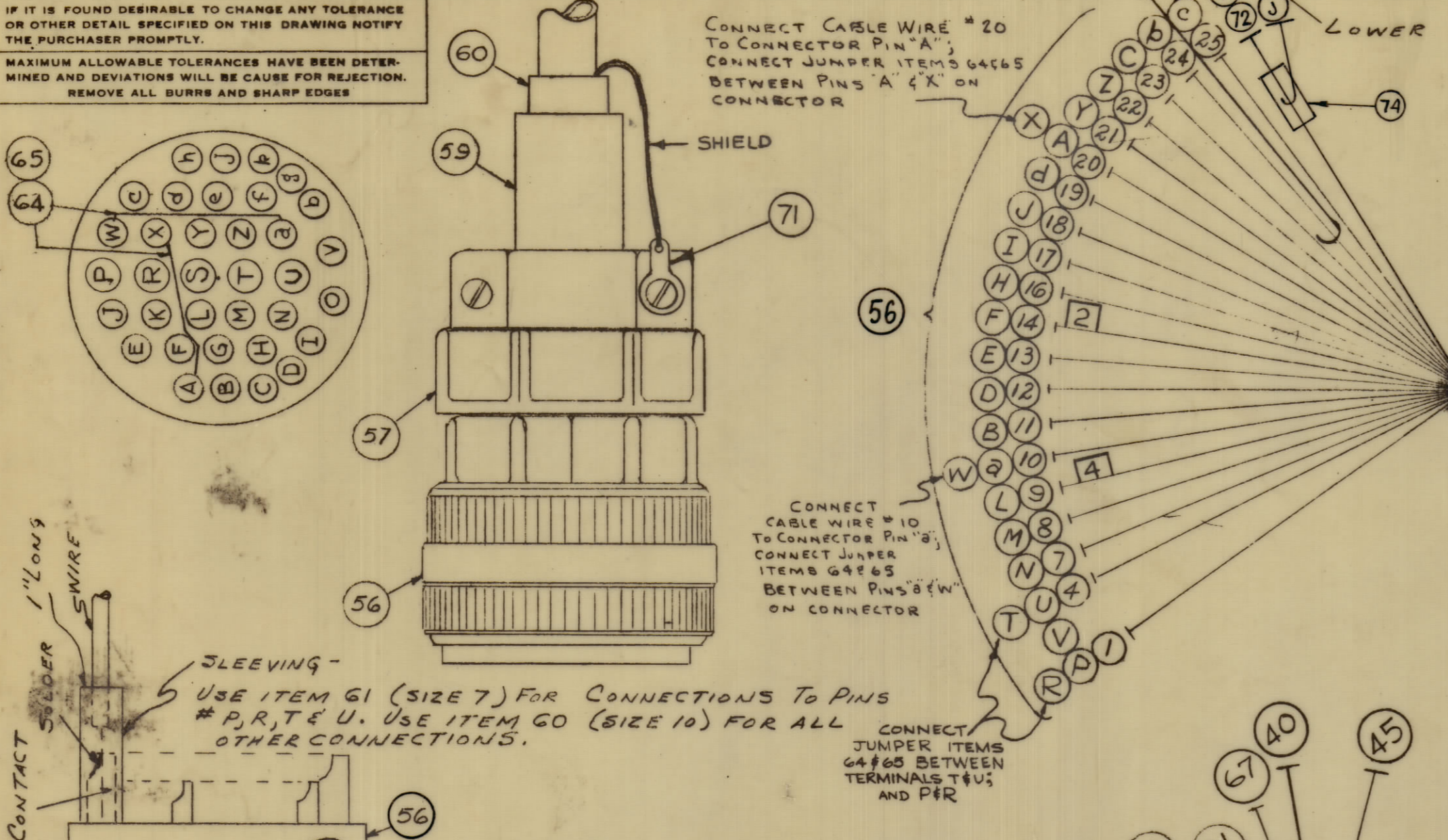
IF IT IS FOUND DESIRABLE TO CHANGE ANY TOLERANCE OR OTHER DETAIL SPECIFIED ON THIS DRAWING NOTIFY THE PURCHASER PROMPTLY.
 MAXIMUM ALLOWABLE TOLERANCES HAVE BEEN DETERMINED AND DEVIATIONS WILL BE CAUSE FOR REJECTION. REMOVE ALL BURRS AND SHARP EDGES.

CONNECT CABLE WIRE #20 TO CONNECTOR PIN "A"; CONNECT JUMPER ITEMS 64&65 BETWEEN PINS "A" & "X" ON CONNECTOR

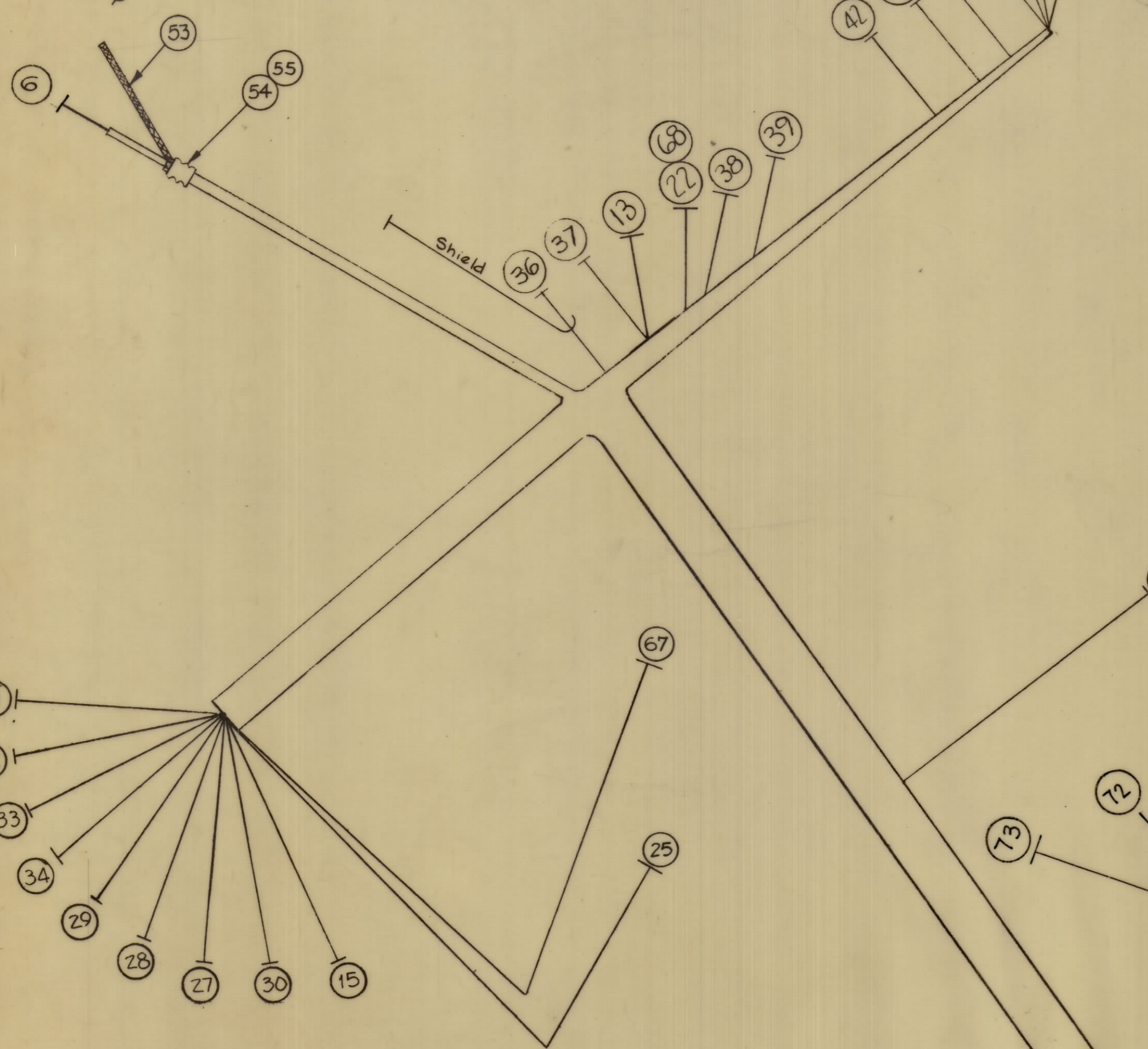
CONNECT CABLE WIRE #10 TO CONNECTOR PIN "B"; CONNECT JUMPER ITEMS 64&65 BETWEEN PINS "B" & "W" ON CONNECTOR

SLEEVING - USE ITEM 61 (SIZE 7) FOR CONNECTIONS TO PINS #P, R, T & U. USE ITEM 60 (SIZE 10) FOR ALL OTHER CONNECTIONS.

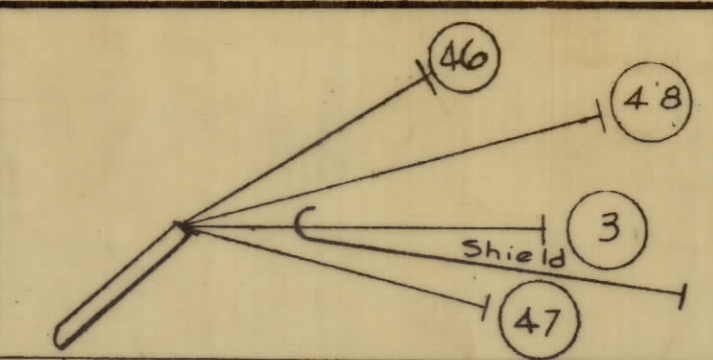
ITEM 56 WIRING DETAIL (NOT TO SCALE)



MS3106B32-7P



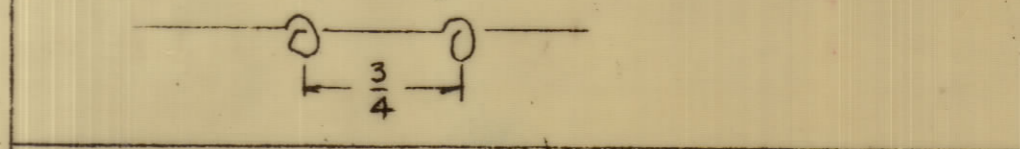
REQ. ITEM	PART No.	DESCRIPTION	SYMBOL
2	75	LA101-4	BAND MARKER, CABLE No.4
1/2"	74	PXB30-12-1	INSULATION, SLVG., SHRINK
2 1/2"	73	MWC20(7)U0	CABLE, INSULATED
3 3/4"	72	RG188/U	CABLE, RF. COAXIAL



REQ. ITEM	PART No.	DESCRIPTION	SYMBOL
1	71	TE-104-5	LUG SOLDER
2	70	LA-101-2	BAND MARKER, CABLE No.2
X	69	CD-101-1-MW	CORD, LACING
5 3/4"	68	MWC20(7)U9	CABLE, INSULATED
22"	67	MWC20(7)U2	Cable, Insulated
X	66	B5-100	SOLDER, SOFT
25"	65	WL-100-7	WIRE, BUSS BAR, TINNED
5"	64	PX-100-1-022	INSULATION, SLEEVING
3 1/2"	63	PX-100-1-263	INSULATION, SLEEVING
1"	62	EY-102-8	GROMMET
10"	61	PX-100-1-148	INSULATION, SLEEVING, SIZE #7
19"	60	PX-100-1-106	INSULATION, SLEEVING SIZE #10
1	59	MS3420-16A	BUSHING, CABLE
1	58	MS3420-12A	BUSHING, CABLE
1	57	MS3057-20	CLAMP, CABLE
1	56	MS3106B32-7P	CONNECTOR, PLUG, MALE
3	55	CU-101-10	FERRULE, CABLE, OUTER
3	54	CU-101-9	FERRULE, CABLE, INNER
3	53	WL-103-1	SHIELD, FLEXIBLE
4	52	DELETED	
21"	51	PX-100-1-625	INSULATION, SLEEVING
26"	50	MWC22(7)U8	CABLE, INSULATED
25 1/2"	49	7	
28 1/2"	48	94	
18 3/4"	47	1	
31 1/2"	46	2	
28 3/4"	45	4	
27 1/4"	44	2	
23 1/4"	43	3	
25 1/2"	42	98	
29"	41	1	
27 3/4"	40	7	
21 1/4"	39	5	
24 1/2"	38	2	
23"	37	MWC22(7)U92	
20 1/2"	36	MWC22(7)SJ3	
21"	35	MWC22(7)SJ92	
29 3/4"	34	MWC22(7)U92	
28 1/2"	33	91	
28"	32	9	
28 1/2"	31	6	
32"	30	4	
29"	29	93	
28"	28	1	
25 3/4"	27	95	
26"	26	96	
59"	25	MWC22(7)U90	
27 1/4"	24	MWC22(7)S15	
21"	23	MWC22(7)U5	
53"	22	MWC20(7)U9	
56"	21	MWC20(7)U0	
32"	20	MWC22(7)U98	
26"	19	97	
37"	18	94	
32"	17	3	
34 1/2"	16	2	
14 1/2"	15	96	
37"	14	91	
48 1/2"	13	92	
35 1/4"	12	4	
20 3/4"	11	7	
21"	10	1	
37 1/2"	9	91	
37 3/4"	8	6	
37 1/2"	7	MWC22(7)U95	
39 1/2"	6	RG-188/U	
26"	5	MWC22(7)U7	
32 1/4"	4	MWC12(19)U0	
23"	3	MWC22(7)SJ4	
X	2	DELETED	
32"	1	MWC12(19)U9	

This Symbol Denotes End of Insulation & Nail Driving Point. Wire must be Stripped 1/2" Beyond This Point & Tinned 3/8" Unless Otherwise Noted.

Wires Should Be Placed In Cable In Numerical Sequence As They Appear In The Item Column. Space Lacing Approx. 1/4" Apart.



END OF SHIELD
 ABOVE SYMBOL DENOTES PIGTAILED SHIELD

NOTICE TO PERSONS RECEIVING THIS DRAWING
 THE TECHNICAL MATERIEL CORPORATION claims proprietary right in the material disclosed herein. This drawing is issued in confidence and no part of the information contained herein is to be disclosed or used to manufacture any item without the express written permission from THE TECHNICAL MATERIEL CORPORATION to the user. The drawing is loaned for mutual assistance and is subject to recall at any time.

Property of:
 THE TECHNICAL MATERIEL CORPORATION
 MANHATTAN, NEW YORK

ISSUE	ITEM	CHANGED FROM	DATE	CH. NO.	DRAFTS	CHECKER	ENG. APP.
B		BUILD-UP REVISED QTY ITEM 70 WAS 4 ITEM 75 ADDED	9-27-66		18900	BDL	
A		IT 67 WAS MWC20(7)U92 IT 25 WAS MWC22(7)U90 IT 26 WAS MWC22(7)U95 IT 23 WAS MWC22(7)U92	8-29-65		14882		
X		ORIGINAL RELEASE FOR PRODUCTION	3-10-65				
X		EXPERIMENTAL RELEASE	2-16-65				

REQ. UNIT	MODEL	PROJECT NO.	ASSY. NO.	DATE
1	RFC-1A			2-16-65

STOCK SIZE	WEIGHT PER PC.	TYPE & TEMPER.	HEAT TREAT SPEC.	FINISH & SPEC. NO.

THE TECHNICAL MATERIEL CORP.
 MANHATTAN, NEW YORK
 CABLE, MAIN, IPA

FINAL APPROVAL
 CA1025 B